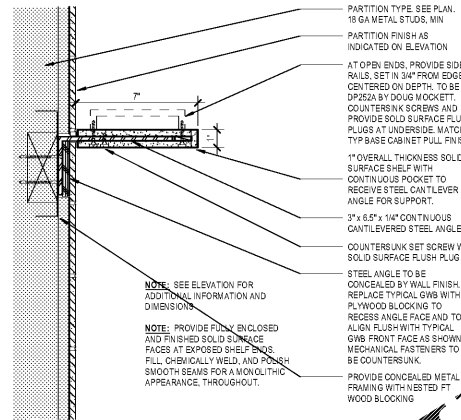
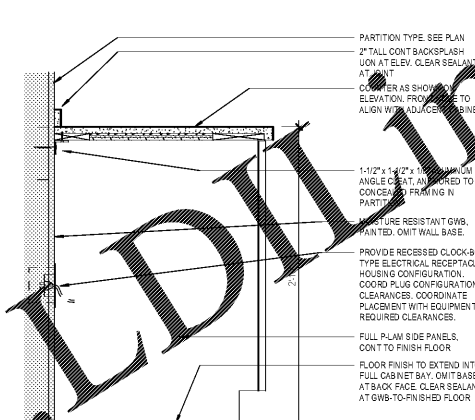


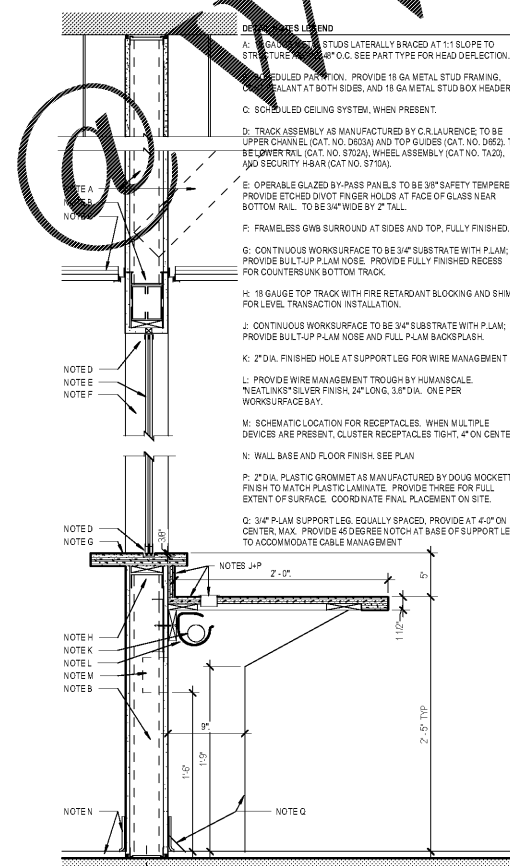
6 TYP COUNTERTOP EDGE DETAIL, C
6" = 1'-0"



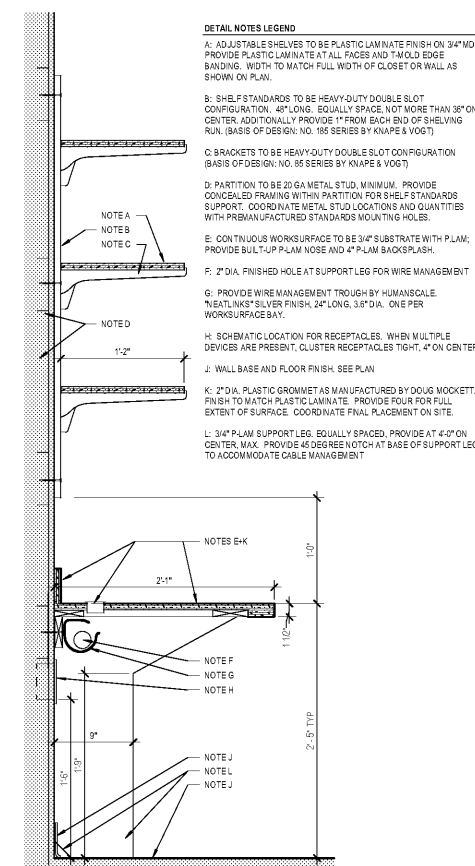
5 FIXED FLOATING SHELF
3" = 1'-0"



2 COUNTER AT UNDERCABINET EQUIPMENT
1 1/2" = 1'-0"



4 SERVICE COUNTER WITH WINDOW - C, BR
1 1/2" = 1'-0"



1 WORK COUNTER WITH SHELVES - SH21, BR, C
1 1/2" = 1'-0"

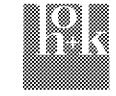
GENERAL CASEWORK NOTES

- A. GENERAL NOTES:**
- UNLESS OTHERWISE NOTED, ALL CASEWORK SHALL BE FINISHED WITH PLASTIC LAMINATE.
 - UNLESS OTHERWISE NOTED, ALL CASEWORK SHALL BE CONSTRUCTED TO AWI PREMIUM CABINET SPECIFICATIONS.
 - ALL CASEWORK SHALL HAVE FILLERS SCRIBED TO THE ADJACENT WALLS AND TO THE INSIDE CORNERS UNLESS OTHERWISE NOTED.
 - UNLESS OTHERWISE NOTED, ALL COUNTERTOPS, BACKSPLASHES, SHELVES, DRAWERS, UNDER COUNTER PLAM BRACKETS AND DOORS SHALL HAVE PVC EDGING.
 - ALL COUNTERTOPS THAT DO NOT HAVE A BACKSPLASH SHALL BE SCRIBED TO THE ADJACENT WALL.
 - ALL SHELVES WITHIN WALL AND BASE CABINETS ARE TO BE ADJUSTABLE WITH PVC EDGING FRONT AND BACK.
 - REFER TO FINISH SCHEDULE AND INTERIOR ELEVATIONS FOR PLASTIC LAMINATE AND OTHER MATERIAL FINISH SELECTIONS.
 - WHERE UNDERCABINET LIGHTS ARE INDICATED, PROVIDE CABINETS WITH A VALANCE. DO NOT INCREASE CABINET HEIGHT WHERE FINISHES ARE REQUIRED. CABINET HEIGHT WITH VALANCE SHALL BE AS SHOWN ON THE DRAWINGS.
 - ALL MILLWORK EDGES TO BE BASHED.
 - OUTSIDE CORNERS OF COUNTERTOPS SHALL BE ROUNDED WITH A 1" RADIUS.
 - ALL SOLID SURFACE AND STYRENE COUNTERTOPS SHALL HAVE EDGES CHAMFERED 1/8".
 - SURFACE ALL OPEN COUNTERTOPS WITH METAL BRACKETS UNLESS NOTED OTHERWISE. MAXIMUM UNSUPPORTED DISTANCE FOR 3/4" SUBSTRATE IS 4'-0" OR 1" SUBSTRATE IS 4'-0".
 - COORDINATE AND VERIFY ALL GRONMET LOCATIONS WITH OWNER.
 - CONTRACTOR TO PROVIDE SEALANT BETWEEN 90-D SURFACE COUNTER AND BACKSPLASH, TYP.
 - ALL MILLWORK TO BE LOCKABLE.
 - UNLESS OTHERWISE NOTED, ALL UPPER AND LOWER MILLWORK TO TOTAL WIDTH TO ALIGN.
 - SEAMS TO BE MINIMIZED; WHERE NECESSARY, SEAMS ARE TO BE CLEAN, INCONSPICUOUS AND ALIGNED WITH NEARBY EDGES OR REVEALS.
 - END SPACER PANS IN UPPER AND LOWER MILLWORK TO BE EQUAL ON BOTH ENDS AND RECEIVE A FASCIA PANEL.
 - RUN WOOD GRAIN IN VERTICAL DIRECTION FOR ALL PLAM UNLESS OTHERWISE NOTED.
 - ALL COUNTERTOPS WITH SINKS AND TRANSACTION TOPS SHALL BE SOLID SURFACE. ALL OTHER COUNTER TOPS SHALL BE PLAM. REFER TO FINISH SCHEDULE AND SPECIFICATIONS.
 - REFER TO AWD SERIES FOR TYPICAL MOUNTING HEIGHTS AND CONVENTION.
 - REFER TO ENLARGED PLANS AND ELEVATIONS FOR MOUNTING AND CASEWORK LOCATIONS.



Project
**THE CENTER FOR
ADVANCED SURGICAL
SERVICES (CASS)**
80 GILMER STREET SE
ATLANTA, GA 30303

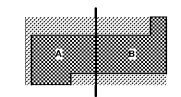
Prepared For
GRADY HEALTH SYSTEM
80 JESSE HILL DR. SE
ATLANTA, GA 30303



Helmut Obata & Kastbaum, Inc.
133 Peachtree Street, NE, Suite 4800
Atlanta, GA 30303 USA
+1 404 439 9000 +1 404 439 9001

All reproduction & intellectual property rights reserved © 2019
In Association with

Key Plan



Professional Seal

**NOT FOR
CONSTRUCTION**

No.	Description	Date
1	ED - GMP	2019-07-03

Project No: 18.16013.00
Sheet Title
CASEWORK - TYPICAL

Original is 20 x 43. Do not scale contents of this drawing
Sheet Number

A943

Order Plans

WWW.LDLINE.COM