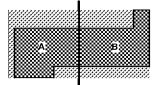




Helmut Obata & Kasstbaum, Inc.  
 133 Peachtree Street, NE, Suite 4800  
 Atlanta, GA 30303 USA  
 1+1 404 439 9000 1+1 404 439 9001

All reproduction & intellectual property rights reserved ©  
 2019  
 An Association with

Key Plan



Professional Seals

**NOT FOR  
 CONSTRUCTION**

No.	Description	Date
1	ED: GMP	2019-07-03

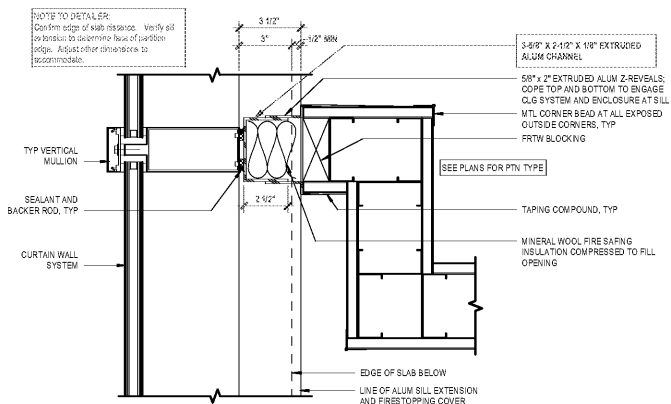
Project No: 18-16013.00  
 Sheet Title

**INTERIOR PARTITIONS  
 - DETAILS**

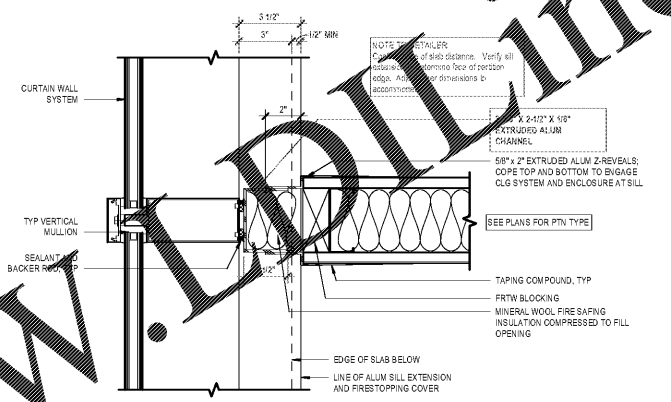
Original is 20 x 43. Do not scale contents of this drawing  
 Sheet Number

**GENERAL NOTES FOR INTERIOR PARTITIONS**

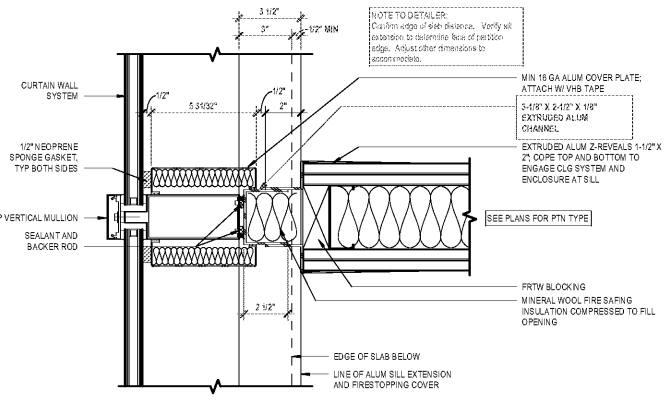
1. REFER TO INDICATED DRAWINGS FOR HEAD DETAILS. HEAD CONDITION AS APPLICABLE TO SUPPORT CONDITION.
2. PROVIDE TYPE 'X' GWS AT ALL SMOKE PARTITIONS.
3. SMOKE BARRIERS SHALL RESIST THE PASSAGE OF AIR AT THE RATE OF NOT MORE THAN 5.0 CFM/FT<sup>2</sup> AT BOTH AMBIENT TEMPERATURES & 400 DEG F AT A PRESSURE DIFFERENTIAL OF 0.30" WATER COLUMN.
4. MOISTURE RESISTANT, PAPERLESS, COATED FIBERGLASS MAT WATER RESISTANT GYPSUM WALL BOARD TO BE UTILIZED ON THE OUTER LAYER OF ALL PARTITIONS THAT ARE SCHEDULED TO RECEIVE CERAMIC TILE, PORCELAIN TILE, STONE TILE OR ANY MATERIAL THAT IS SECURE WITH ADHESIVES OR THIN SET MORTARS.
5. PROVIDE 1/2" CEMENT BOARD AT ALL SHOWER AND TUB LOCATIONS. EXTEND A MINIMUM OF 12" INCHES BEYOND WET AREA AS DEFINED BY SHOWER GLASS, CURTAIN, OR TUB EDGE.
6. AT LARGE FORMAT TILE WITH ANY EDGE GREATER THAN 18", PROVIDE 1/2" CEMENT BACKER BOARD WITH METAL STUDS 33 IN. TO 60 IN. STUDS MAX. MIN. BRACED AT 45° OR VERTICAL. MAX DEFLECTION OF 1/320 OR 1/16" IN. WHEREVER IS LESS.
7. MOISTURE RESISTANT GWS TO BE USED AT STAR SHAFTS AND/OR SHOWER WAC SHALL PLUMBING, MECHANICAL, JANITOR CLOSET, MECHANICAL OR WALL MOUNTING BULKHEADS, AND OTHER CASES WHERE MOISTURE WOULD OCCUR AND AS SCHEDULED OR NOTED OTHERWISE.
8. THE TOP AND BOTTOM HEAD DETAILS ARE BASED ON UL TESTS FOR TYPICAL CONDITIONS FOR FIRE-RESISTIVE JOINT SYSTEMS. THEY DO NOT DEPICT CONDITIONS OR SYSTEMS THAT MAY OCCUR ON THE PROJECT. PROVIDE EQUIVALENT SYSTEMS OR AN ENGINEERING JUDGEMENT FOR UNUSUAL CONDITIONS AND CONDITIONS NOT DEPICTED IN DETAILS.
9. ALL BRACING AND UNBRACED LENGTHS TO BE DESIGNED AND BASED ON SSM (STEEL STUD MANUFACTURERS ASSOCIATION) PRODUCT TECHNICAL GUIDE (www.ssm.com).
10. PROVIDE THE APPROPRIATE HEAD CONNECTION DETAIL BASED ON FIRE RATING AND ON CONNECTION CONDITION AT DECK OR BBM.



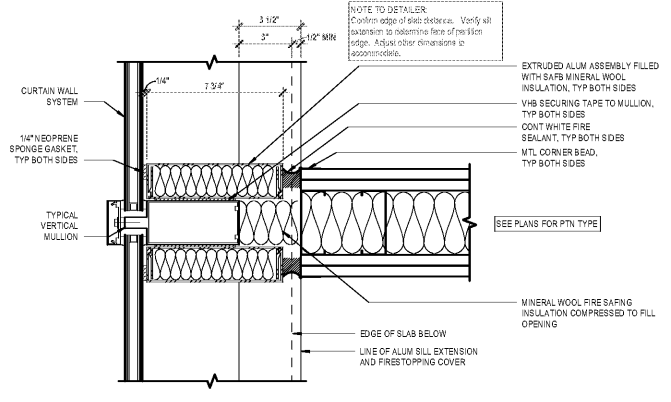
**9 OFFSET PTN TERMINATION AT MULLION**  
 3" = 1'-0"



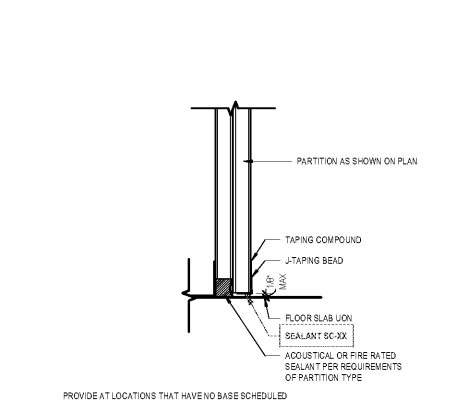
**8 PTN TERMINATION AT MULLION**  
 3" = 1'-0"



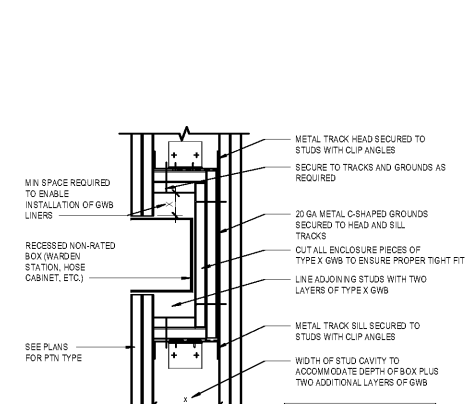
**7 ACOUSTIC PTN TERMINATION AT MULLION**  
 3" = 1'-0"



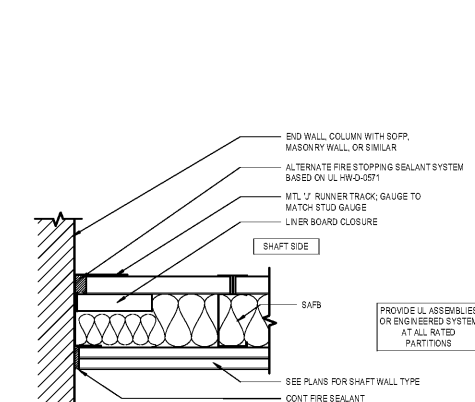
**6 TERMINATION AT MULLION FOR FIRE-RATED PARTITION**  
 3" = 1'-0"



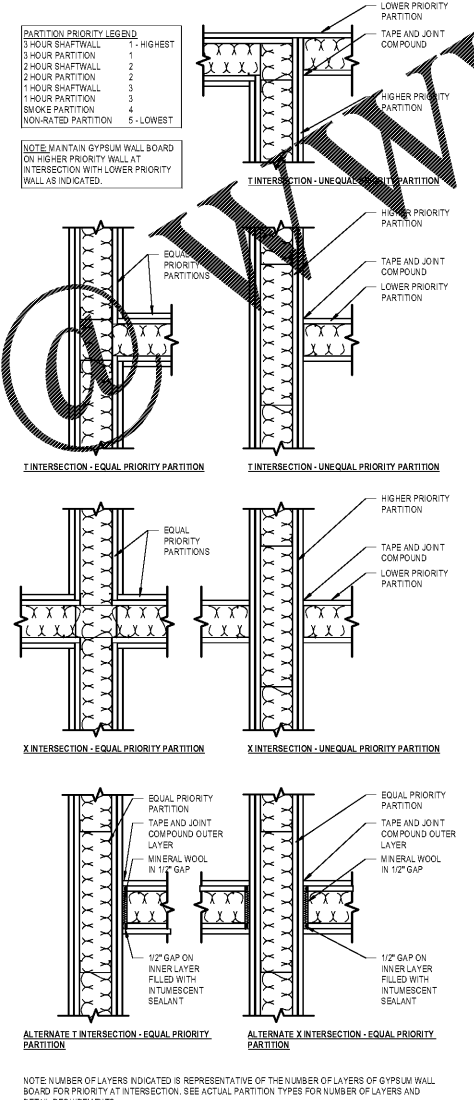
**12 GWS WALL BASE CONDITION WITH NO BASE SCHEDULED**  
 6" = 1'-0"



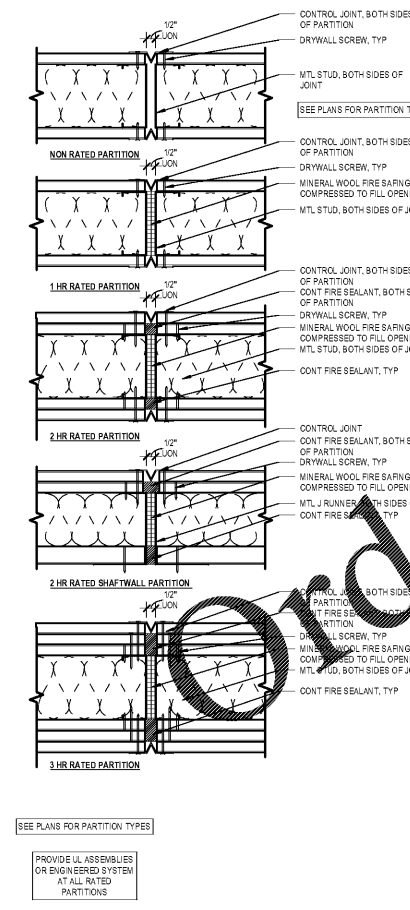
**13 FIVE-SIDED BOX ENCLOSURE**  
 3" = 1'-0"



**11 EDGE OF SHAFT WALL PLAN DETAIL**  
 3" = 1'-0"



**5 TYPICAL PTN INTERSECTIONS**  
 1 1/2" = 1'-0"



**10 TYPICAL PTN CONTROL JOINTS DET**  
 3" = 1'-0"

2019-07-03 4:56:06 PM