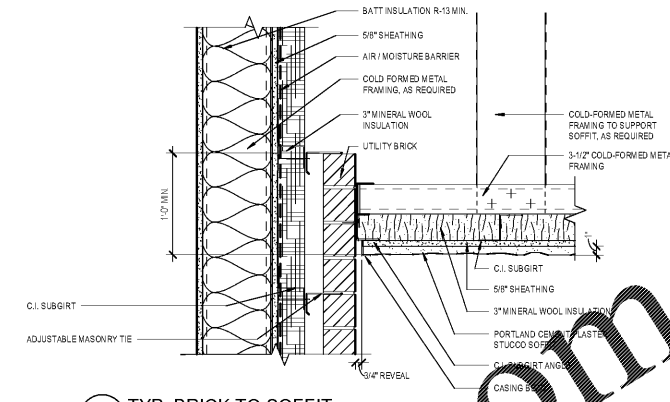
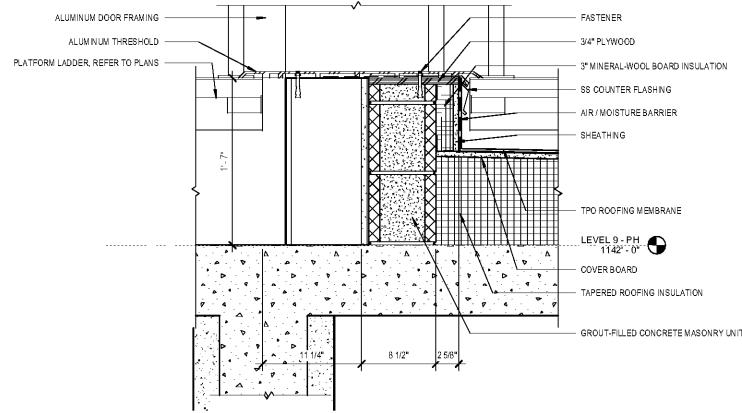


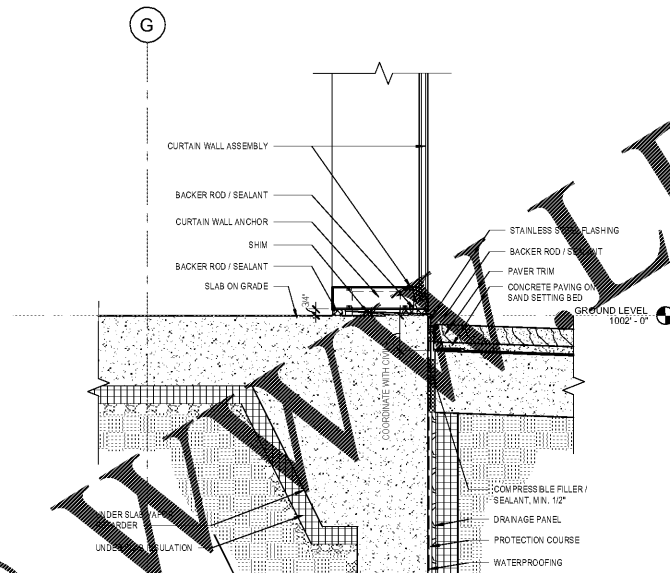
8 TYP. METAL PANEL DOOR HEAD
1 1/2" = 1'-0"



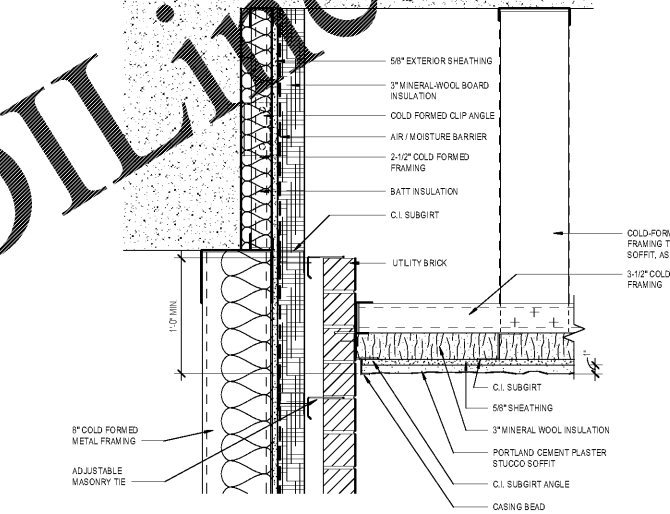
3 TYP. BRICK TO SOFFIT
1 1/2" = 1'-0"



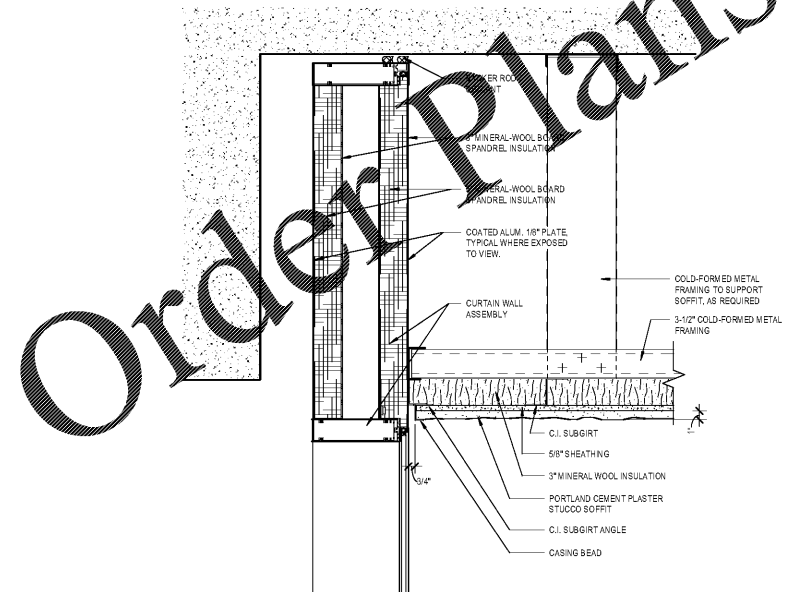
7 TYP. ROOFING AT DOOR SILL
1 1/2" = 1'-0"



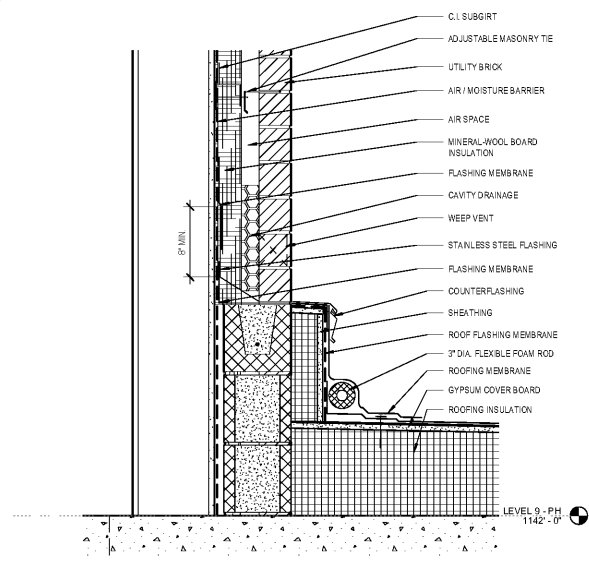
5 TYP. LOBBY CURTAINWALL SILL
1 1/2" = 1'-0"



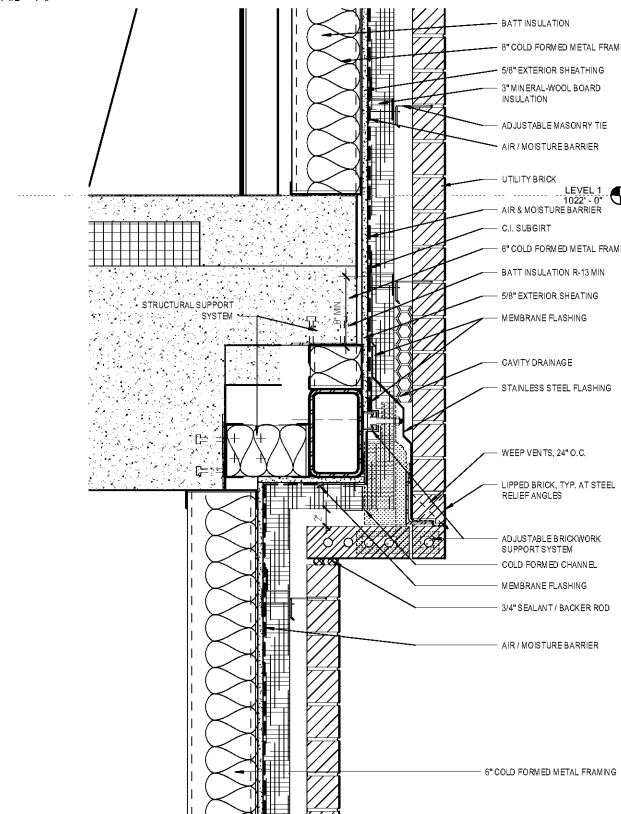
2 TYP. BRICK TO STUCCO SOFFIT AT PARKING SPLIT SLAB
1 1/2" = 1'-0"



6 TYP. LOBBY CURTAINWALL HEAD AT STUCCO SOFFIT PARKING SPLIT SLAB
1 1/2" = 1'-0"



4 TYP. BRICK AT MAIN ROOF
1 1/2" = 1'-0"



1 S. 13.5 - Dependent 1 - Callout 1
1 1/2" = 1'-0"



Project
**THE CENTER FOR
ADVANCED SURGICAL
SERVICES (CASS)**
80 GILMER STREET SE
ATLANTA, GA 30303

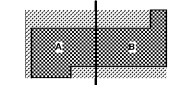
Prepared For
GRADY HEALTH SYSTEM
80 JESSE HILL DR. SE
ATLANTA, GA 30303



Helmuth, Obata & Kassabaum, Inc.
133 Peachtree Street, NE, Suite 4800
Atlanta, GA 30303 USA
T+1 404 439 9000 F+1 404 439 9001

All reproduction & intellectual property rights reserved © 2019
In Association with

Key Plan



Professional Seal

**NOT FOR
CONSTRUCTION**

No. Description Date

1. EDC: GMP 2019.07.03

Project No: 18.16013.00
Sheet Title

**EXTERIOR DETAILS -
SECTION**

Original is 20 x 43. Do not scale contents of this drawing
Sheet Number

A853

Order Plans @

WWW.LDILINE.COM