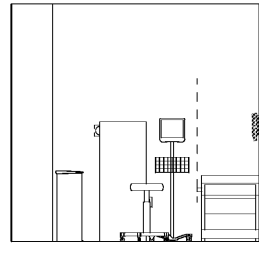
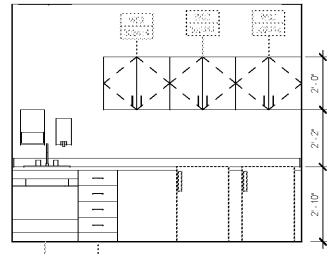


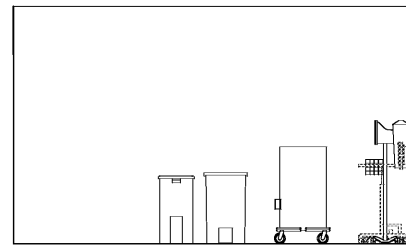
15 CANCER PROCEDURE - W
3/8" = 1'-0"



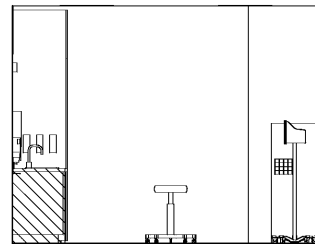
11 CANCER EXAM - W
3/8" = 1'-0"



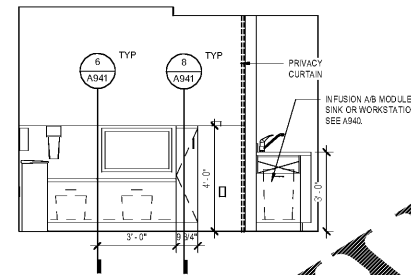
7 ORTHO - BACK HALL WORKSTN TYP.
3/8" = 1'-0"



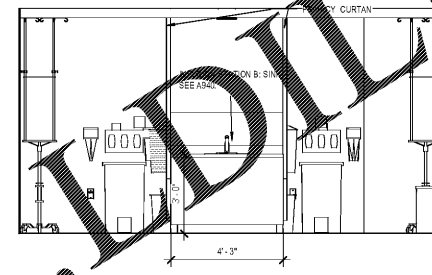
14 CANCER PROCEDURE - S
3/8" = 1'-0"



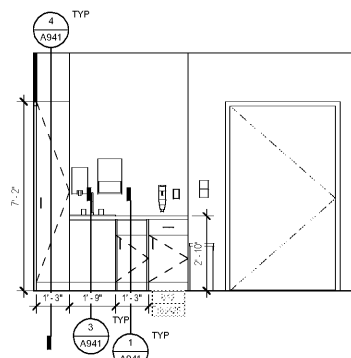
10 CANCER EXAM - S
3/8" = 1'-0"



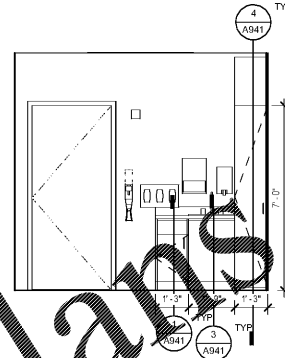
6 INFUSION FAST TRACK - S
3/8" = 1'-0"



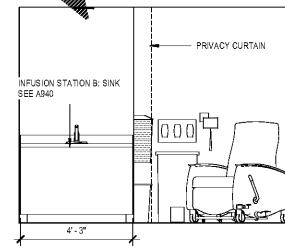
3 TYP INFUSION BAY SINK - S
3/8" = 1'-0"



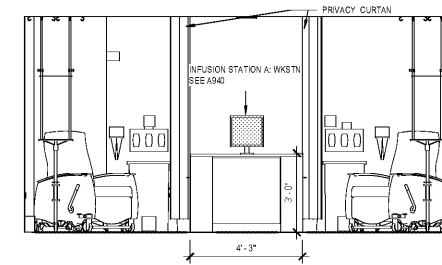
13 CANCER PROCEDURE - E
3/8" = 1'-0"



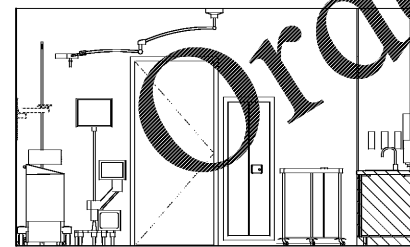
9 CANCER EXAM - E
3/8" = 1'-0"



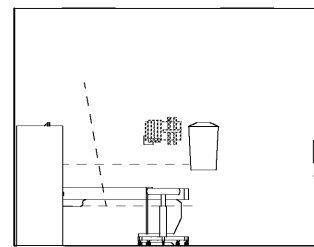
5 INFUSION FAST TRACK - E
3/8" = 1'-0"



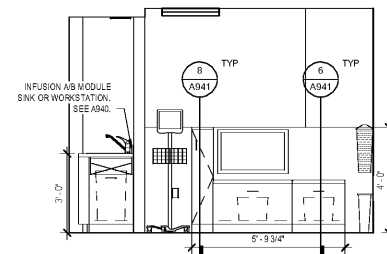
2 TYP INFUSION BAY WORKSTATION - N
3/8" = 1'-0"



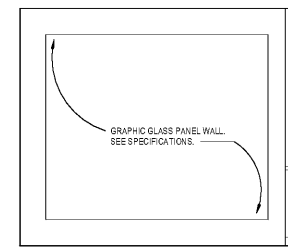
12 CANCER PROCEDURE - N
3/8" = 1'-0"



8 CANCER EXAM - N
3/8" = 1'-0"



4 INFUSION FAST TRACK - N
3/8" = 1'-0"



1 TYP INFUSION ROOM GLASS PARTITION
3/8" = 1'-0"

SHEET SPECIFIC NOTES

- A. GENERAL NOTES:
1. TRUE NORTH USED FOR NORTH, EAST, SOUTH, AND WEST DESIGNATIONS. REFER TO NORTH ARROW ON FLOOR PLANS.
 2. EQUIPMENT IS SHOWN FOR SPACE PLANNING AND MOUNTING-HEIGHT PURPOSES ONLY. REFER TO MEDICAL EQUIPMENT DRAWINGS FOR QUANTITIES, DIMENSIONS, POWER REQUIREMENTS AND ADDITIONAL INFORMATION.
 3. ALL CASEWORK TO BE LOCKABLE, U.N.O.
 4. REFER TO ENLARGED PLANS, ELEVATIONS AND DETAILS FOR CLARIFICATION OF EXTENT OF FINISH MATERIALS AND ADDITIONAL INFORMATION.
 5. REFER TO A941 SERIES SHEETS FOR TYPICAL CASEWORK SECTIONS AND GENERAL NOTES.
 6. REFER TO A221 SERIES FINISH PLANS FOR FINISH & WALL PROTECTION SYSTEM EXTENTS AND INFORMATION.
 7. REFER TO A221.1, A221.2 FOR WALL PROTECTION SYSTEM LEGEND AND FINISH SCHEDULE.
 8. WHERE TRANSITIONS OF WALL PROTECTION OCCUR USE FRY REGLET TRANSITION PIECES AS FOLLOWS:
 - A. AT CORNER TRANSITIONS USE REGLET #125-211 ANODIZED.
 - B. AT TRANSITION FROM WALL PROTECTION TO GLASS USE FRY REGLET W/CS-100 BEARING RAILS ANODIZED.
 - C. AT TRANSITION FROM WALL PROTECTION TO WALL PROTECTION USE WCT-125-211 CLEAR ANODIZED.
 9. DEFINITIONS:
 1. GWS - GYPSUM WALL BOARD
 2. WWP - WALL PROTECTION SYSTEM.



Project
THE CENTER FOR
ADVANCED SURGICAL
SERVICES (CASS)

80 GILMER STREET SE
ATLANTA, GA 30303

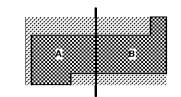
Prepared For
GRADY HEALTH SYSTEM
80 JESSE HILL DR. SE
ATLANTA, GA 30303



Helmuth, Obata & Kassabaum, Inc.
133 Peachtree Street, NE, Suite 4800
Atlanta, GA 30303 USA
+1 404 439 9000 F+1 404 439 9001

All reproduction & intellectual property rights reserved © 2019
in Association with

Key Plan



Professional Seal

NOT FOR
CONSTRUCTION

No.	Description	Date
1	ED - GMP	2019.07.03

Project No: 18.16013.00
Sheet Title
CLINICAL ELEVATIONS
- LEVEL 08

Original is 20 x 42. Do not scale contents of this drawing
Sheet Number

A648.1

Order Plans @ WWW.WDOnline.com