

SHEET SPECIFIC NOTES

- A. GENERAL NOTES:**
1. TRUE NORTH USED FOR NORTH, EAST, SOUTH, AND WEST DESIGNATIONS. REFER TO NORTH ARROW ON FLOOR PLANS.
  2. EQUIPMENT IS SHOWN FOR SPACE PLANNING AND MOUNTING-HEIGHT PURPOSES ONLY. REFER TO MEDICAL EQUIPMENT DRAWINGS FOR QUANTITIES, DIMENSIONS, POWER REQUIREMENTS AND ADDITIONAL INFORMATION.
  3. ALL CASWORK TO BE LOOKABE, U.N.O.
  4. REFER TO ENLARGED PLANS, ELEVATIONS AND DETAILS FOR CLARIFICATION OF EXTENT OF FINISH MATERIALS AND ADDITIONAL INFORMATION.
  5. REFER TO A400 SERIES SHEETS FOR TYPICAL CASWORK SECTIONS AND GENERAL NOTES.
  6. REFER TO A220 SERIES FINISH PLANS FOR FINISH & WALL PROTECTION SYSTEM EXTENTS AND INFORMATION.
  7. REFER TO A220.1, A220.2 FOR WALL PROTECTION SYSTEM LEGEND AND FINISH SCHEDULE.
  8. WHERE TRANSITIONS OF WALL PROTECTION OCCUR USE FRY REGLET TRANSITIONS PIECES AS FOLLOWS:
    - A. AT CORNER TRANSITIONS USE REGLET FT-125-217 CLEAR ANODIZED.
    - B. AT TRANSITION FROM WALL PROTECTION TO CASING USE FRY REGLET WCT3 3/8" CLEAR ANODIZED.
    - C. AT TRANSITION FROM WALL PROTECTION TO WALL PROTECTION USE WCT3 3/8" CLEAR ANODIZED.
  9. DEFINITIONS:
    1. GWS - GYPSUM WALL BOARD
    2. WPS - WALL PROTECTION SYSTEM.



Project  
**THE CENTER FOR  
 ADVANCED SURGICAL  
 SERVICES (CASS)**  
 80 GILMER STREET SE  
 ATLANTA, GA 30303

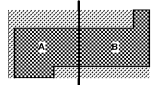
Prepared For  
**GRADY HEALTH SYSTEM**  
 80 JESSE HILL DR. SE  
 ATLANTA, GA 30303



Hok  
 Helmut, Obata & Kassabaum, Inc.  
 133 Peachtree Street, NE, Suite 4800  
 Atlanta, GA 30303 USA  
 1+1 404 439 9000 1+1 404 439 9001

All reproduction & intellectual property rights reserved ©  
 2019  
 In Association with

Key Plan



Professional Seal

**NOT FOR  
 CONSTRUCTION**

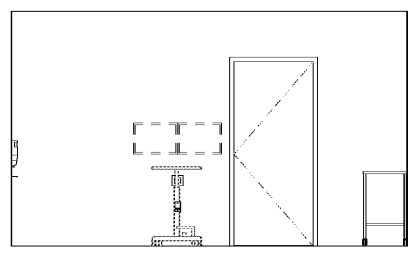
No.	Description	Date
1	ED - GWP	2019-07-03

Project No: 18.16013.00  
 Sheet Title

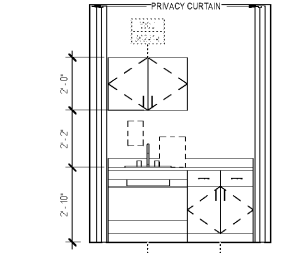
**CLINICAL ELEVATIONS  
 - LEVEL 07**

Original is 20 x 43. Do not scale contents of this drawing  
 Sheet Number

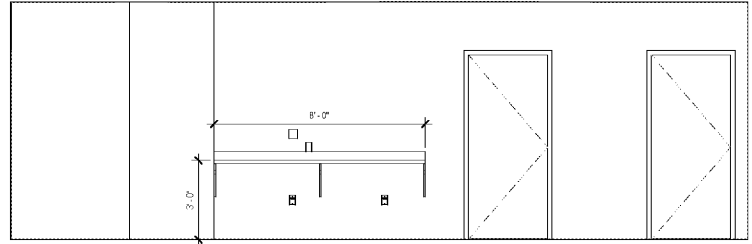
**A647.3**



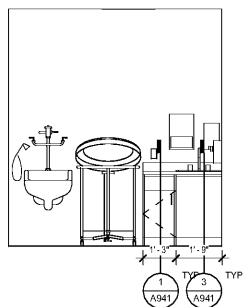
12 IMAGING ULTRASOUND - W  
 3/8" = 1'-0"



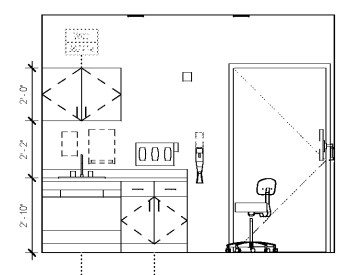
8 IMAGING IV PREP - W  
 3/8" = 1'-0"



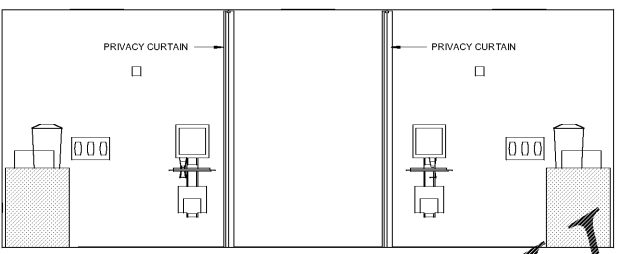
4 PET CT - N  
 3/8" = 1'-0"



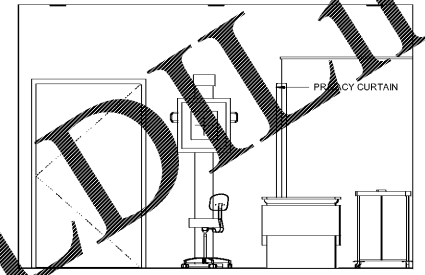
15 IMAGING SOILED ROOM - E  
 3/8" = 1'-0"



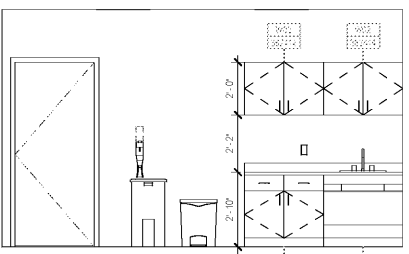
11 IMAGING ULTRASOUND - S  
 3/8" = 1'-0"



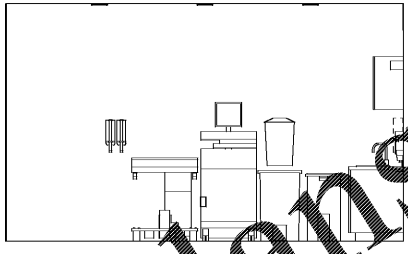
7 IMAGING IV PREP - E  
 3/8" = 1'-0"



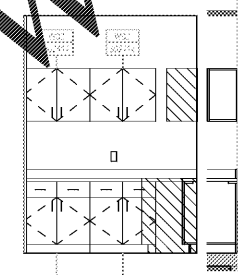
3 IMAGING RAD ROOM - W  
 3/8" = 1'-0"



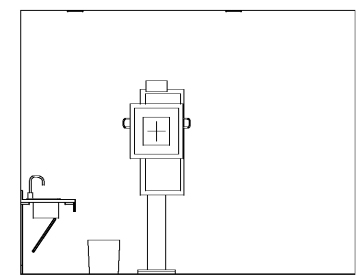
14 ULTRASOUND CLEAN - W  
 3/8" = 1'-0"



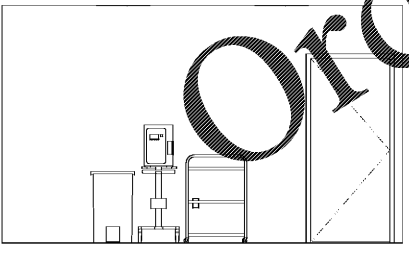
10 IMAGING ULTRASOUND - E  
 3/8" = 1'-0"



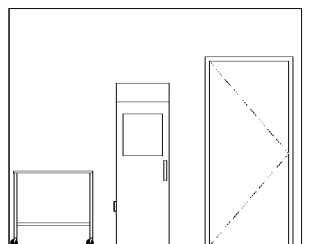
6 IMAGING HOT LAB - W  
 3/8" = 1'-0"



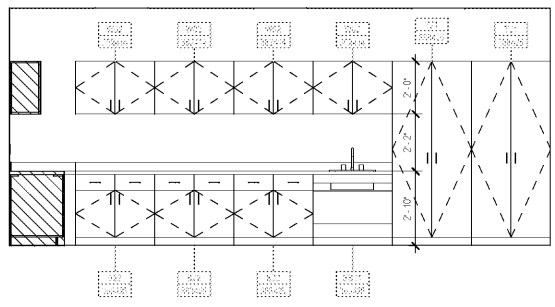
2 IMAGING RAD ROOM - S  
 3/8" = 1'-0"



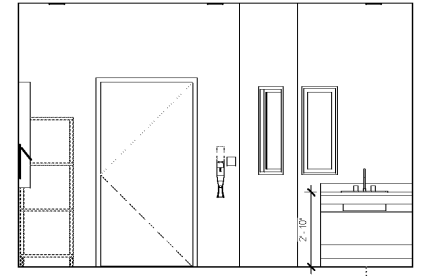
13 ULTRASOUND CLEAN - E  
 3/8" = 1'-0"



9 IMAGING ULTRASOUND - N  
 3/8" = 1'-0"



5 IMAGING HOT LAB - N  
 3/8" = 1'-0"



1 IMAGING RAD ROOM - E  
 3/8" = 1'-0"