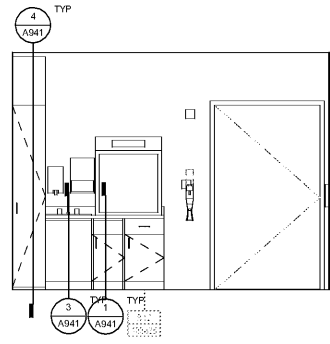
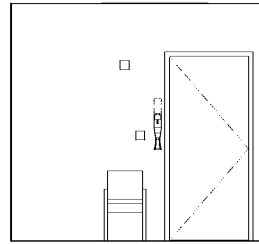


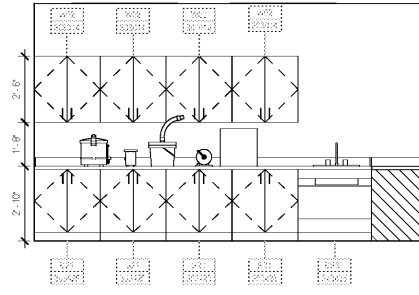
17 OMFS EXAM - W
3/8" = 1'-0"



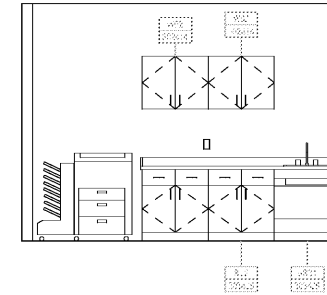
13 OMFS PROCEDURE - W
3/8" = 1'-0"



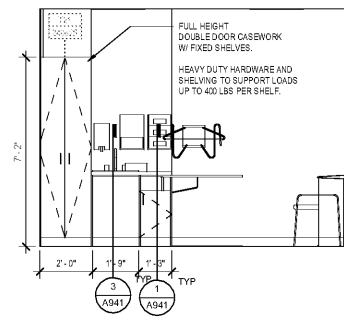
9 ENT EXAM - W
3/8" = 1'-0"



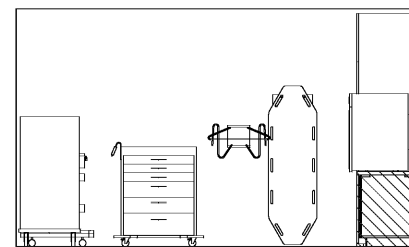
5 DENTAL LAB - W
3/8" = 1'-0"



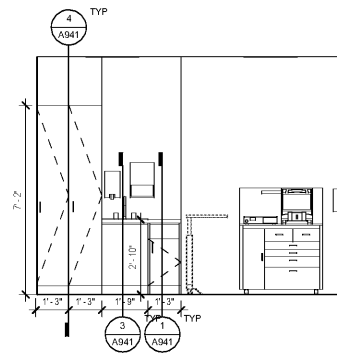
4 OPPTH RESIDENT HUDDLE - N
3/8" = 1'-0"



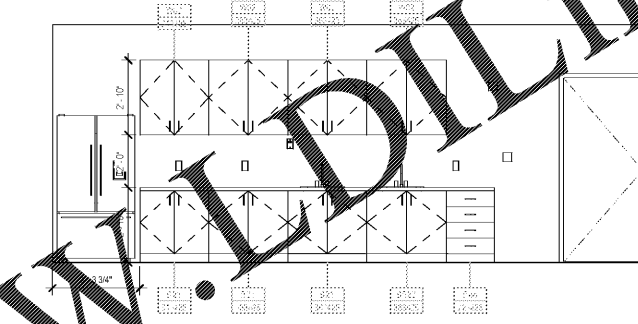
16 OMFS EXAM - S
3/8" = 1'-0"



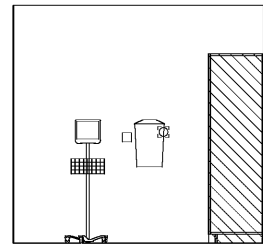
12 OMFS PROCEDURE - S
3/8" = 1'-0"



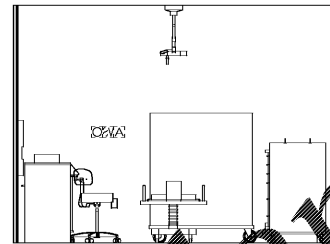
8 ENT EXAM - S
3/8" = 1'-0"



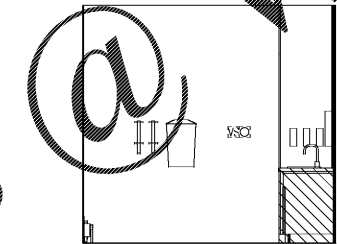
3 OPPTH STAFF LOUNGE - S
3/8" = 1'-0"



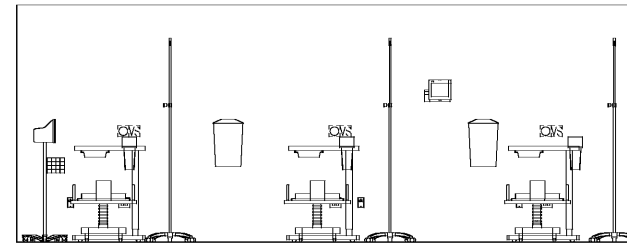
15 OMFS EXAM - E
3/8" = 1'-0"



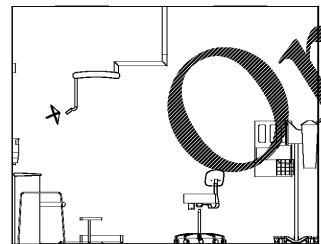
11 OMFS PROCEDURE - E
3/8" = 1'-0"



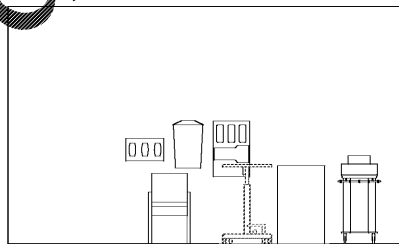
7 ENT EXAM - E
3/8" = 1'-0"



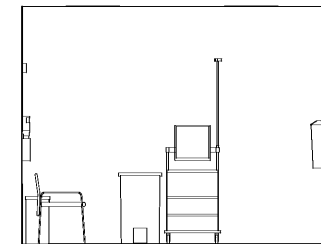
2 OMFS PREP/RECOVER - S
3/8" = 1'-0"



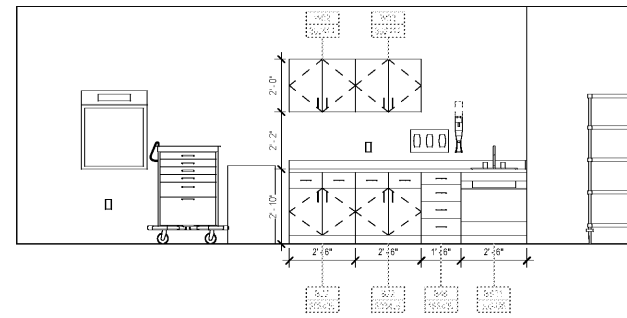
14 OMFS EXAM - N
3/8" = 1'-0"



10 OMFS PROCEDURE - N
3/8" = 1'-0"



6 ENT EXAM - N
3/8" = 1'-0"



1 OMFS PREP/RECOVER - N
3/8" = 1'-0"

SHEET SPECIFIC NOTES

- A. GENERAL NOTES:**
1. TRUE NORTH USED FOR NORTH, EAST, SOUTH, AND WEST DESIGNATIONS. REFER TO NORTH ARROW ON FLOOR PLANS.
 2. EQUIPMENT IS SHOWN FOR SPACE PLANNING AND MOUNTING-HEIGHT PURPOSES ONLY. REFER TO MEDICAL EQUIPMENT DRAWINGS FOR QUANTITIES, DIMENSIONS, POWER REQUIREMENTS AND ADDITIONAL INFORMATION.
 3. ALL CASEWORK TO BE LOCKABLE, U.A.O.
 4. REFER TO ENLARGED PLANS, ELEVATIONS AND DETAILS FOR CLARIFICATION OF EXTENT OF FINISH MATERIALS AND ADDITIONAL INFORMATION.
 5. REFER TO ADO SERIES SHEETS FOR TYPICAL CASEWORK SECTIONS AND GENERAL NOTES.
 6. REFER TO A220 SERIES FINISH PLANS FOR FINISH & WALL PROTECTION SYSTEM EXTENTS AND INFORMATION.
 7. REFER TO A220.1, A220.2 FOR WALL PROTECTION SYSTEM'S LEGEND AND FINISH SCHEDULE.
 8. WHERE TRANSITIONS OF WALL PROTECTION OCCUR USE FRY REGLET TRANSITIONS PIECES AS FOLLOWS:
 - A. AT CORNER TRANSITION USE REGLET 125-211 CORNER AND VOIDED.
 - B. AT TRANSITION FROM WALL PROTECTION TO GYP. USE FRY REGLET W/211 CORNER AND VOIDED.
 - C. TRANSITION FROM WALL PROTECTION TO WALL PROTECTION USE W/211 211 CLEAR AND VOIDED.
 9. REFER TO ADO SERIES SHEETS FOR TYPICAL CASEWORK SECTIONS AND GENERAL NOTES.
 10. REFER TO A220 SERIES FINISH PLANS FOR FINISH & WALL PROTECTION SYSTEM EXTENTS AND INFORMATION.
 11. REFER TO A220.1, A220.2 FOR WALL PROTECTION SYSTEM'S LEGEND AND FINISH SCHEDULE.
 12. WHERE TRANSITIONS OF WALL PROTECTION OCCUR USE FRY REGLET TRANSITIONS PIECES AS FOLLOWS:
 - A. AT CORNER TRANSITION USE REGLET 125-211 CORNER AND VOIDED.
 - B. AT TRANSITION FROM WALL PROTECTION TO GYP. USE FRY REGLET W/211 CORNER AND VOIDED.
 - C. TRANSITION FROM WALL PROTECTION TO WALL PROTECTION USE W/211 211 CLEAR AND VOIDED.
 13. REFER TO ADO SERIES SHEETS FOR TYPICAL CASEWORK SECTIONS AND GENERAL NOTES.
 14. REFER TO A220 SERIES FINISH PLANS FOR FINISH & WALL PROTECTION SYSTEM EXTENTS AND INFORMATION.
 15. REFER TO A220.1, A220.2 FOR WALL PROTECTION SYSTEM'S LEGEND AND FINISH SCHEDULE.
 16. WHERE TRANSITIONS OF WALL PROTECTION OCCUR USE FRY REGLET TRANSITIONS PIECES AS FOLLOWS:
 - A. AT CORNER TRANSITION USE REGLET 125-211 CORNER AND VOIDED.
 - B. AT TRANSITION FROM WALL PROTECTION TO GYP. USE FRY REGLET W/211 CORNER AND VOIDED.
 - C. TRANSITION FROM WALL PROTECTION TO WALL PROTECTION USE W/211 211 CLEAR AND VOIDED.
 17. REFER TO ADO SERIES SHEETS FOR TYPICAL CASEWORK SECTIONS AND GENERAL NOTES.
 18. REFER TO A220 SERIES FINISH PLANS FOR FINISH & WALL PROTECTION SYSTEM EXTENTS AND INFORMATION.
 19. REFER TO A220.1, A220.2 FOR WALL PROTECTION SYSTEM'S LEGEND AND FINISH SCHEDULE.
 20. WHERE TRANSITIONS OF WALL PROTECTION OCCUR USE FRY REGLET TRANSITIONS PIECES AS FOLLOWS:
 - A. AT CORNER TRANSITION USE REGLET 125-211 CORNER AND VOIDED.
 - B. AT TRANSITION FROM WALL PROTECTION TO GYP. USE FRY REGLET W/211 CORNER AND VOIDED.
 - C. TRANSITION FROM WALL PROTECTION TO WALL PROTECTION USE W/211 211 CLEAR AND VOIDED.



Project
THE CENTER FOR
ADVANCED SURGICAL
SERVICES (CASS)
80 GILMER STREET SE
ATLANTA, GA 30303

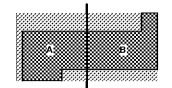
Prepared For
GRADY HEALTH SYSTEM
80 JESSE HILL DR. SE
ATLANTA, GA 30303



Helmuth Obata & Kassabaum, Inc.
133 Peachtree Street, NE, Suite 4800
Atlanta, GA 30303 USA
1+1 404 439 9000 1+1 404 439 9001

All reproduction & intellectual property rights reserved © 2019
An Association with

Key Plan



Professional Seal

NOT FOR
CONSTRUCTION

No.	Description	Date
1	ED - GMP	2019-07-03

Project No: 18.16013.00
Sheet Title
CLINICAL ELEVATIONS
- LEVEL 06

Original is 20 x 43. Do not scale contents of this drawing
Sheet Number

A646.2