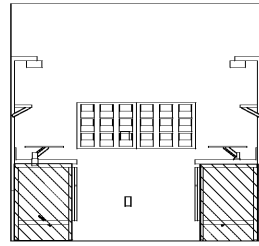
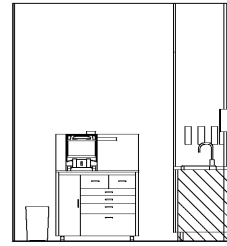


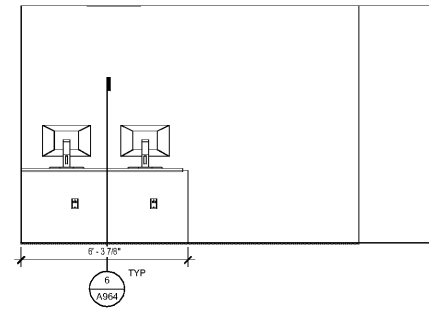
16 ENT PROCEDURE ROOM - W
3/8" = 1'-0"



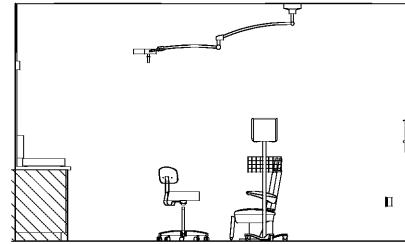
12 TYP AUDIO WKRM - W
3/8" = 1'-0"



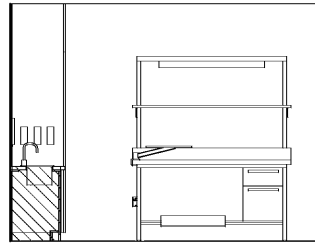
8 HEARING AID TEST - W
3/8" = 1'-0"



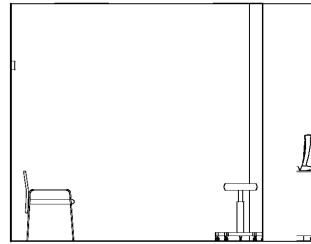
4 OPHTH TEAM WORK STATION - W
3/8" = 1'-0"



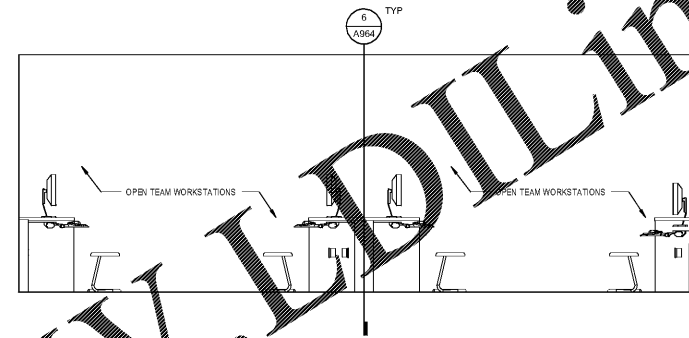
15 ENT PROCEDURE ROOM - S
3/8" = 1'-0"



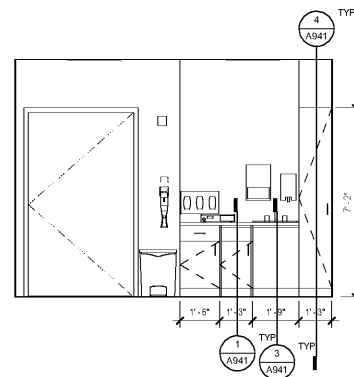
11 TYP AUDIO WKRM - S
3/8" = 1'-0"



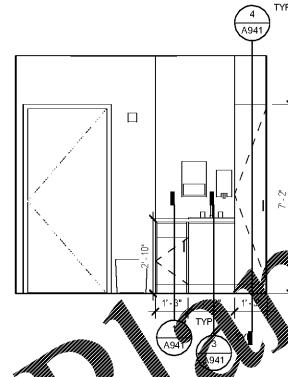
7 HEARING AID TEST - S
3/8" = 1'-0"



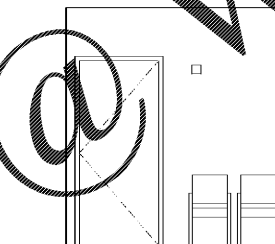
3 OPHTH TEAM WORK STATION - S
3/8" = 1'-0"



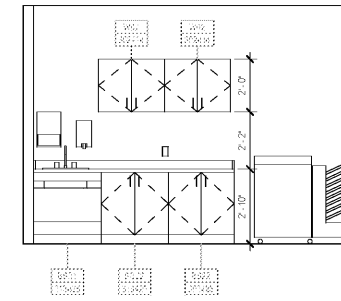
14 ENT PROCEDURE ROOM - E
3/8" = 1'-0"



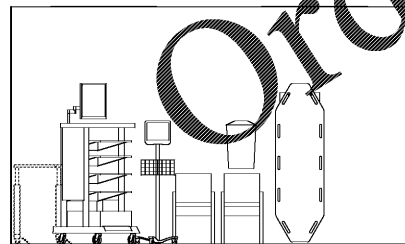
10 TYP AUDIO WKRM - E
3/8" = 1'-0"



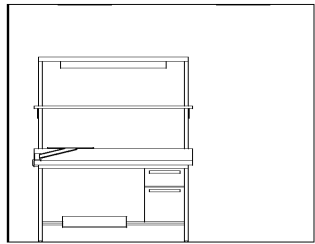
6 HEARING AID TEST - E
3/8" = 1'-0"



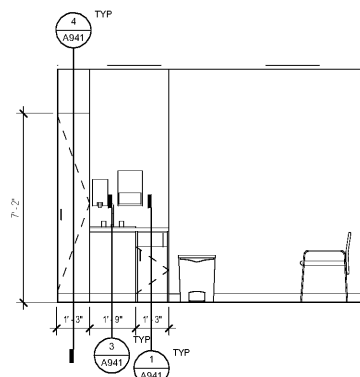
2 OPHTH TEAM WORK STATION - N
3/8" = 1'-0"



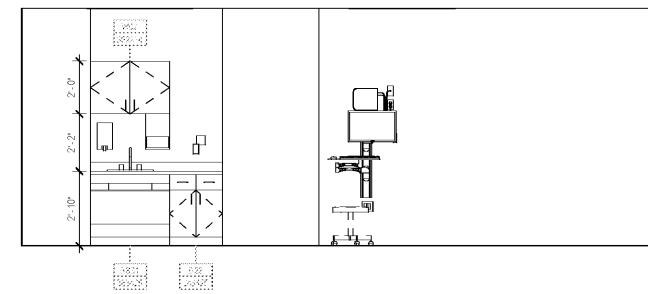
13 ENT PROCEDURE ROOM - N
3/8" = 1'-0"



9 TYP AUDIO WKRM - N
3/8" = 1'-0"



5 HEARING AID TEST - N
3/8" = 1'-0"



1 OPHTHALMOLOGY LONG LANE - E
3/8" = 1'-0"

SHEET SPECIFIC NOTES

- A. GENERAL NOTES:**
1. TRUE NORTH USED FOR NORTH, EAST, SOUTH, AND WEST DESIGNATIONS. REFER TO NORTH ARROW ON FLOOR PLANS.
 2. EQUIPMENT IS SHOWN FOR SPACE PLANNING AND MOUNTING-HEIGHT PURPOSES ONLY. REFER TO MEDICAL EQUIPMENT DRAWINGS FOR QUANTITIES, DIMENSIONS, POWER REQUIREMENTS AND ADDITIONAL INFORMATION.
 3. ALL CASEWORK TO BE LOCKABLE, U.N.O.
 4. REFER TO ENLARGED PLANS, ELEVATIONS AND DETAILS FOR CLARIFICATION OF EXTENT OF FINISH MATERIALS AND ADDITIONAL INFORMATION.
 5. REFER TO A340 SERIES SHEETS FOR TYPICAL CASEWORK SECTIONS AND GENERAL NOTES.
 6. REFER TO A220 SERIES FINISH PLANS FOR FINISH & WALL PROTECTION SYSTEM EXTENT AND INFORMATION.
 7. REFER TO A220.1, A220.2 FOR WALL PROTECTION SYSTEMS, EGBUR, FINISH SCHEDULE.
 8. WHERE TRANSITIONS OF WALL PROTECTION USE, USE SCHEDULE TRANSITION PIECES AS FOLLOWS:
 - A. AT CORNER TRANSITION USE SCHEDULE TRANSITION PIECE ANOZIZED
 - B. AT TRANSITION FROM WALL PROTECTION TO GYPSUM REGLET USE WCTBT ANOZIZED
 - C. AT TRANSITION FROM WALL PROTECTION TO WALL PROTECTION USE WCTBT ANOZIZED
- B. DEFINITION:**
1. GWS - GYPSUM WALL BOARD
 2. WPS - WALL PROTECTION SYSTEM



Project
**THE CENTER FOR
ADVANCED SURGICAL
SERVICES (CASS)**
80 GILMER STREET SE
ATLANTA, GA 30303

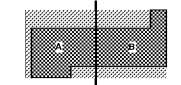
Prepared For
GRADY HEALTH SYSTEM
80 JESSE HILL DR. SE
ATLANTA, GA 30303



Hok
Hok, Inc. - Hobas & Kastbaum, Inc.
133 Peachtree Street, NE, Suite 4800
Atlanta, GA 30303 USA
+1 404 439 9000 +1 404 439 9001

All reproduction & intellectual property rights reserved ©
2019
In Association with

Key Plan



Professional Seal

**NOT FOR
CONSTRUCTION**

No. Description Date

1. EC - GMP 2019.07.03

Project No: 18.16013.00

Sheet Title

**CLINICAL ELEVATIONS
- LEVEL 06**

Original is 20 x 42. Do not scale contents of this drawing
Sheet Number

A646.1

Order plans @ www.IDIline.com