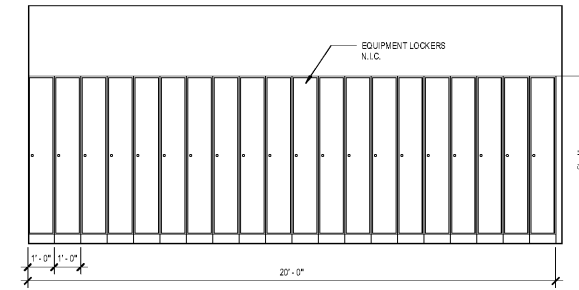
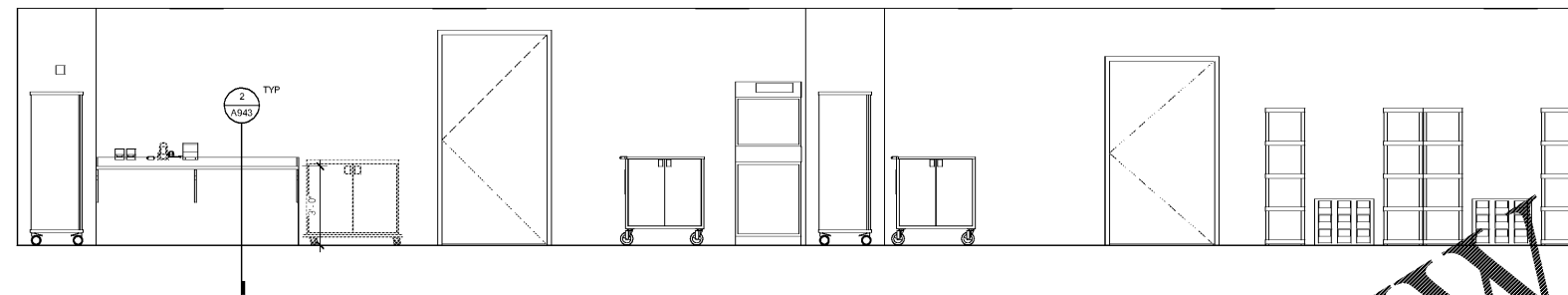


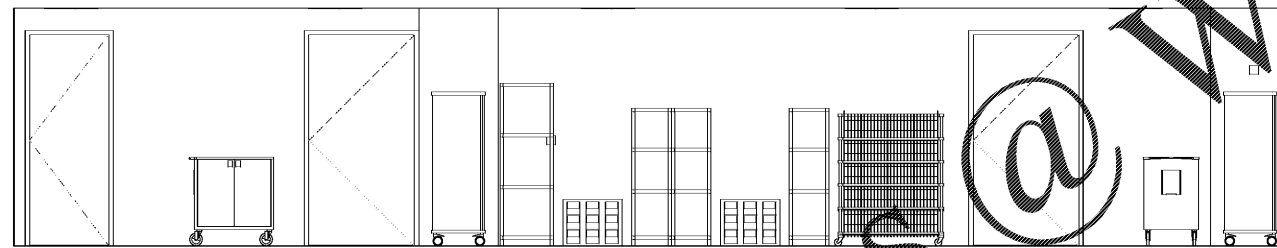
7 OR - STERILE CORE - S A  
3/8" = 1'-0"



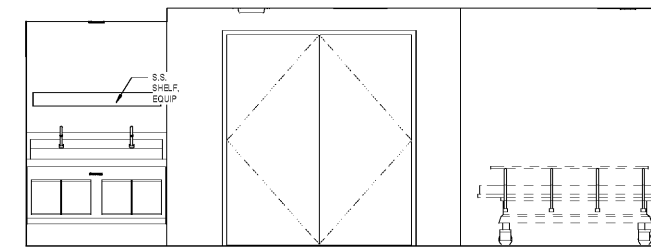
3 ENDO - LOCKERS - W  
3/8" = 1'-0"



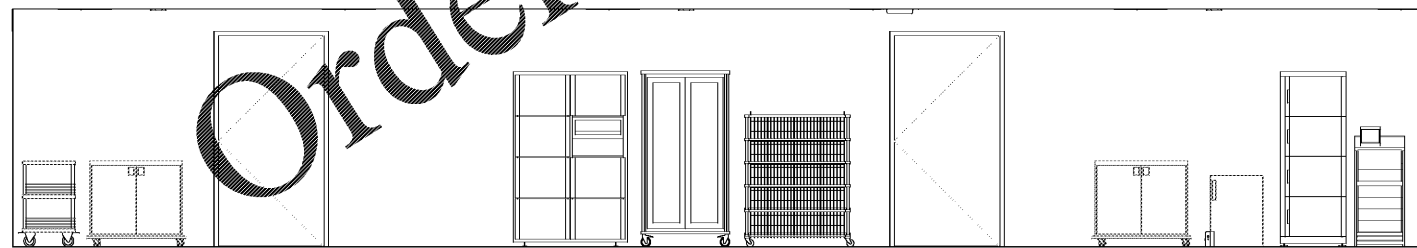
6 OR - STERILE CORE - N B  
3/8" = 1'-0"



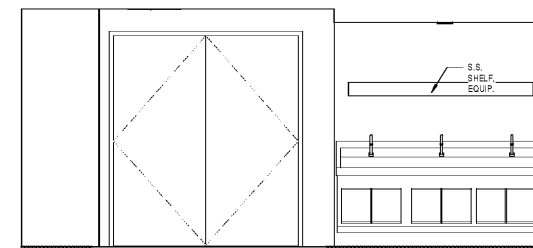
5 OR - STERILE CORE - N  
3/8" = 1'-0"



2 OR TYPICAL SCRUB CORRIDOR - N  
3/8" = 1'-0"



4 OR STERILE CORE - S B  
3/8" = 1'-0"



1 OR TYPICAL SCRUB CORRIDOR - S  
3/8" = 1'-0"

SHEET SPECIFIC NOTES

- A. GENERAL NOTES:**
1. TRUE NORTH USED FOR NORTH, EAST, SOUTH, AND WEST DESIGNATIONS. REFER TO NORTH ARROW ON FLOOR PLANS.
  2. EQUIPMENT IS SHOWN FOR SPACE PLANNING AND MOUNTING-HEIGHT PURPOSES ONLY. REFER TO MEDICAL EQUIPMENT DRAWINGS FOR QUANTITIES, DIMENSIONS, POWER REQUIREMENTS AND ADDITIONAL INFORMATION.
  3. ALL CASEWORK TO BE LOCKABLE, U.N.O.
  4. REFER TO ENLARGED PLANS, ELEVATIONS AND DETAILS FOR CLARIFICATION OF EXTENT OF FINISH MATERIALS AND ADDITIONAL INFORMATION.
  5. REFER TO A640 SERIES SHEETS FOR TYPICAL CASEWORK SECTIONS AND GENERAL NOTES.
  6. REFER TO A220 SERIES FINISH PLANS FOR FINISH & WALL PROTECTION SYSTEM EXTENTS AND INFORMATION.
  7. REFER TO A220.1, A220.2 FOR WALL PROTECTION SYSTEM LEGEND FINISH SCHEDULE.
  8. WHERE TRANSITIONS OF WALL PROTECTION OCCUR USE PROPLET TRANSITION PIECES AS FOLLOWS:
    - A. AT CORNER TRANSITIONS USE PROPLET W/ 125-217 CLEAR ANODIZED
    - B. AT TRANSITION FROM WALL PROTECTION TO GYP. USE FRY REGLET W/ 125-217 CLEAR ANODIZED
    - C. AT TRANSITION FROM WALL PROTECTION TO WALL PROTECTION USE W/ 125-217 CLEAR ANODIZED
- B. DEFINITIONS:**
1. GYP - GYPSUM WALL BOARD
  2. WPS - WALL PROTECTION SYSTEM.



Project  
**THE CENTER FOR  
 ADVANCED SURGICAL  
 SERVICES (CASS)**  
 80 GILMER STREET SE  
 ATLANTA, GA 30303

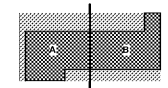
Prepared For  
**GRADY HEALTH SYSTEM**  
 80 JESSE HILL DR. SE  
 ATLANTA, GA 30303



Hok, Inc. - Davis & Kastbaum, Inc.  
 133 Peachtree Street, NE, Suite 4800  
 Atlanta, GA 30303 USA  
 T+1 404 439 9000 F+1 404 439 9001

All reproduction & intellectual property rights reserved ©  
 2019  
 An Association with

Key Plan



Professional Seal

**NOT FOR  
 CONSTRUCTION**

| No. | Description | Date       |
|-----|-------------|------------|
| 1   | ED - GMP    | 2019-07-03 |

Project No: 18.16013.00  
 Sheet Title

**CLINICAL ELEVATIONS  
 - LEVEL 05**

Original is 20 x 42. Do not scale contents of this drawing.  
 Sheet Number

**A645.4**