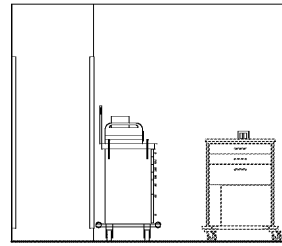
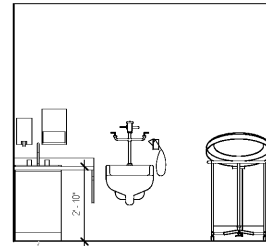


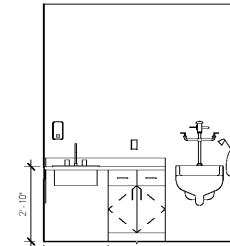
16 PRE POST PACU CLEAN
3/8" = 1'-0"



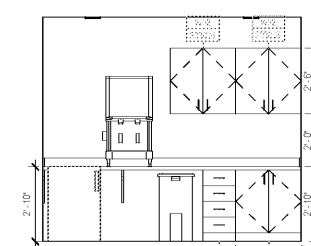
12 PRE POST CRASH CART ALCOVE
3/8" = 1'-0"



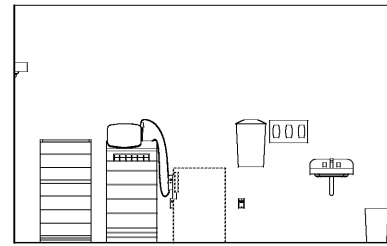
8 PRE POST SOILED
3/8" = 1'-0"



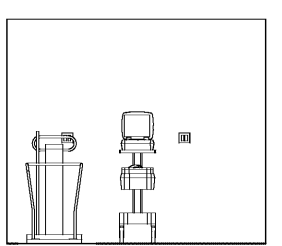
7 PRE POST PACU SOILED
3/8" = 1'-0"



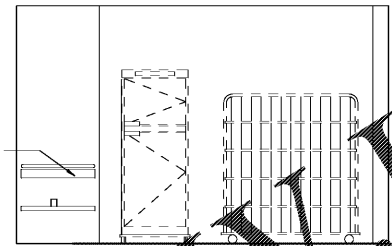
4 PRE POST NOURISH ALCOVE
3/8" = 1'-0"



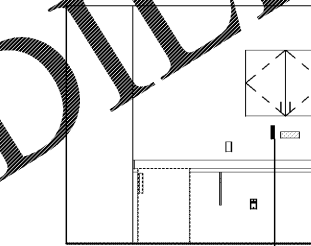
15 MEDS
3/8" = 1'-0"



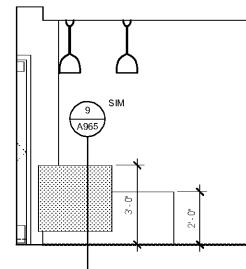
11 PRE POST EQUIPMENT ALCOVE
3/8" = 1'-0"



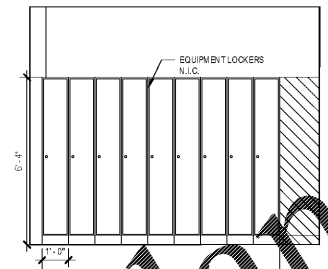
6 PRE POST LINEN
3/8" = 1'-0"



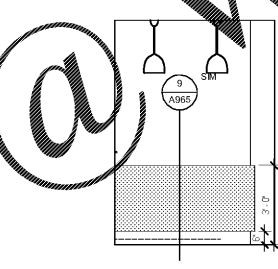
3 PRE POST POC ALCOVE
3/8" = 1'-0"



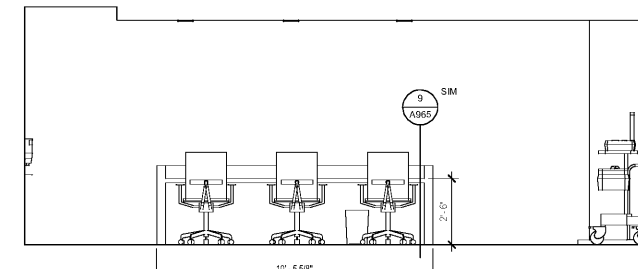
14 SURGERY PP
3/8" = 1'-0"



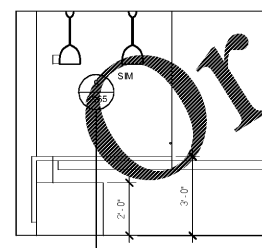
10 PRE POST LOCKER
3/8" = 1'-0"



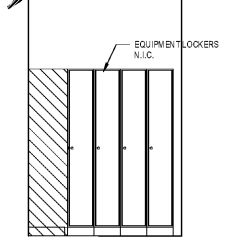
5 CLERK STATION
3/8" = 1'-0"



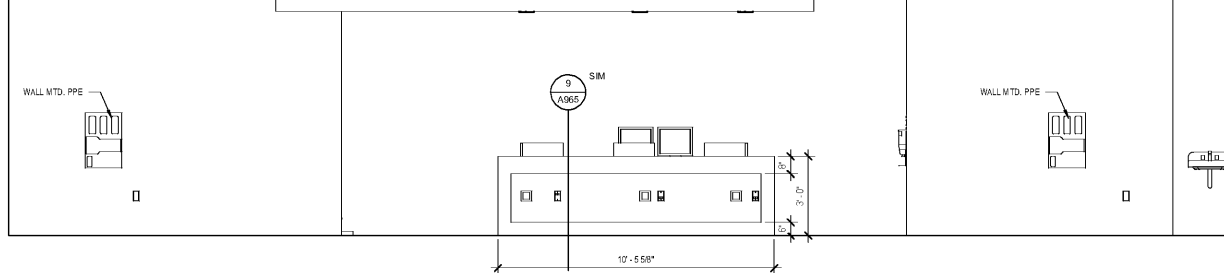
2 PRE POST NURSE STATION
3/8" = 1'-0"



13 PRE POST CLERK STATION
3/8" = 1'-0"



9 PRE POST LOCKER
3/8" = 1'-0"



1 PRE POST NURSE STATION
3/8" = 1'-0"

SHEET SPECIFIC NOTES

- A. GENERAL NOTES:**
1. TRUE NORTH USED FOR NORTH, EAST, SOUTH, AND WEST DESIGNATIONS. REFER TO NORTH ARROW ON FLOOR PLANS.
 2. EQUIPMENT IS SHOWN FOR SPACE PLANNING AND MOUNTING-HEIGHT PURPOSES ONLY. REFER TO MEDICAL EQUIPMENT DRAWINGS FOR QUANTITIES, DIMENSIONS, POWER REQUIREMENTS AND ADDITIONAL INFORMATION.
 3. ALL CASWORK TO BE LOCKABLE, U.N.O.
 4. REFER TO ENLARGED PLANS, ELEVATIONS AND DETAILS FOR CLARIFICATION OF EXTENT OF FINISH MATERIALS AND ADDITIONAL INFORMATION.
 5. REFER TO A840 SERIES SHEETS FOR TYPICAL CASWORK SECTIONS AND GENERAL NOTES.
 6. REFER TO A220 SERIES FINISH PLANS FOR FINISH & WALL PROTECTION SYSTEM EXTENTS AND INFORMATION.
 7. REFER TO A220.1, A220.2 FOR WALL PROTECTION SYSTEMS LEGEND AND FINISH SCHEDULE.
 8. WHERE TRANSITIONS OF WALL PROTECTION OCCUR, REFER TO TRANSITIONS PIECES AS FOLLOWS:
 - A. AT CORNER TRANSITIONS, REFER TO WCTF-120. CLEAR ANODIZED.
 - B. AT TRANSITION WITH WALL PROTECTION TO GYP, USE FRY REGLET WALL PROTECTION SYSTEM. CLEAR ANODIZED.
 - C. AT TRANSITION FROM WALL PROTECTION TO WALL PROTECTION USE WCTF-125-217 CLEAR ANODIZED.
 9. D.
 - 1. GWS - GYPSUM WALL BOARD
 - 2. WPS - WALL PROTECTION SYSTEM.



Project
**THE CENTER FOR
ADVANCED SURGICAL
SERVICES (CASS)**
80 GILMER STREET SE
ATLANTA, GA 30303

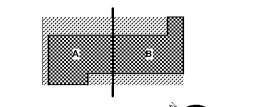
Prepared For
GRADY HEALTH SYSTEM
80 JESSE HILL DR. SE
ATLANTA, GA 30303



Hok, Inc. - Davis & Kastbaum, Inc.
133 Peachtree Street, NE, Suite 4800
Atlanta, GA 30303 USA
1+1 404 439 9000 1+1 404 439 9001

All reproduction & intellectual property rights reserved © 2019
In Association with

Key Plan



Professional Seal

**NOT FOR
CONSTRUCTION**

No.	Description	Date
1	DD - GMP	2019.07.03

Project No: 18.16013.00
Sheet Title
**CLINICAL ELEVATIONS
- LEVEL 05**

Original is 20 x 42. Do not scale contents of this drawing
Sheet Number

A645

Order Plans @ WWW.LDILine.com