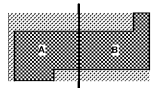




Key Plan



Professional Seal

**NOT FOR  
 CONSTRUCTION**

No.	Description	Date
1	ED - GMP	2019-07-03

Project No: 18.16013.00  
 Sheet Title

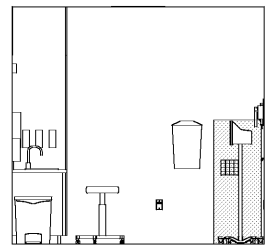
**CLINICAL ELEVATIONS  
 - GROUND**

Original is 20 x 42. Do not scale contents of this drawing  
 Sheet Number

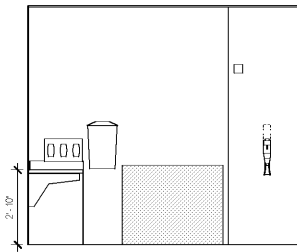
**A641.0**

**SHEET SPECIFIC NOTES**

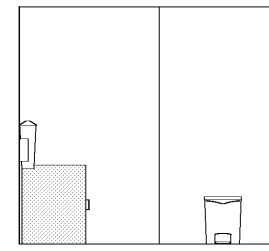
- A. GENERAL NOTES:**
1. TRUE NORTH USED FOR NORTH, EAST, SOUTH, AND WEST DESIGNATIONS. REFER TO NORTH ARROW ON FLOOR PLANS.
  2. EQUIPMENT IS SHOWN FOR SPACE PLANNING AND MOUNTING-HEIGHT PURPOSES ONLY. REFER TO MEDICAL EQUIPMENT DRAWINGS FOR QUANTITIES, DIMENSIONS, POWER REQUIREMENTS AND ADDITIONAL INFORMATION.
  3. ALL CASEWORK TO BE LOCKABLE, U.N.O.
  4. REFER TO ENLARGED PLANS, ELEVATIONS AND DETAILS FOR CLARIFICATION OF EXTENT OF FINISH MATERIALS AND ADDITIONAL INFORMATION.
  5. REFER TO A640 SERIES SHEETS FOR TYPICAL CASEWORK SECTIONS AND GENERAL NOTES.
  6. REFER TO A220 SERIES FINISH PLANS FOR FINISH & WALL PROTECTION SYSTEM EXTENTS AND INFORMATION.
  7. REFER TO A221.1, A221.2 FOR WALL PROTECTION SYSTEMS LEGEND FINISH SCHEDULE.
  8. WHERE TRANSITIONS OF WALL PROTECTION SYSTEMS ARE REQUIRED, TRANSITION PIECES AS FOLLOWS:
    - A. AT CORNER TRANSITION USE WCTB 125-217 CLEAR ANODIZED
    - B. AT TRANSITION FROM WALL PROTECTION TO GYP USE FRY REGLET WCTB 125-217 CLEAR ANODIZED
    - C. AT TRANSITION FROM WALL PROTECTION TO WALL PROTECTION USE WCTB 125-217 CLEAR ANODIZED
- B. DEFINITIONS:**
1. GWS - GYPSUM WALL BOARD
  2. WPS - WALL PROTECTION SYSTEM



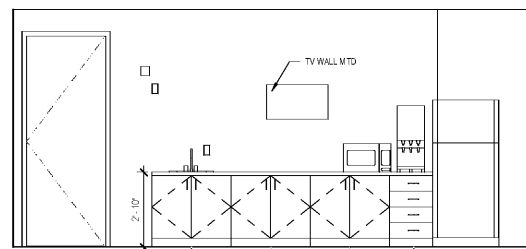
12 PAT EXAM - W  
 3/8" = 1'-0"



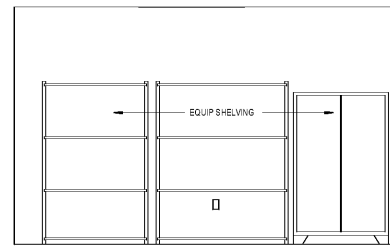
8 BD STN - W  
 3/8" = 1'-0"



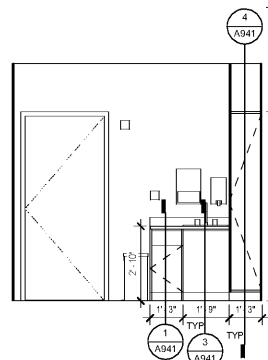
4 BD STATION - W  
 3/8" = 1'-0"



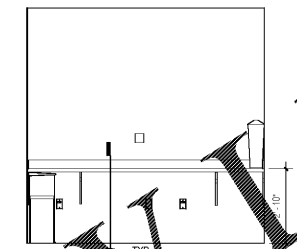
18 GROUND STAFF LOUNGE - W  
 3/8" = 1'-0"



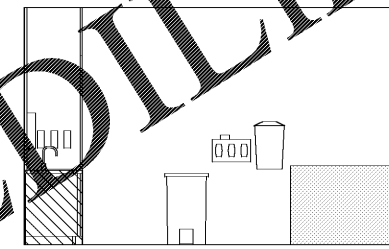
15 EVS HSKP - E  
 3/8" = 1'-0"



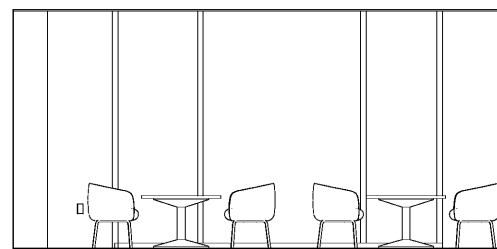
11 PAT EXAM - S  
 3/8" = 1'-0"



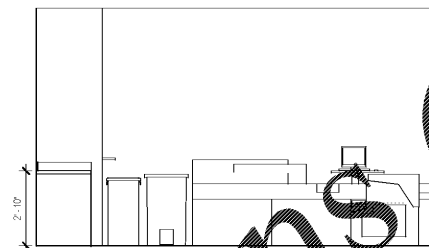
7 BD STN - S  
 3/8" = 1'-0"



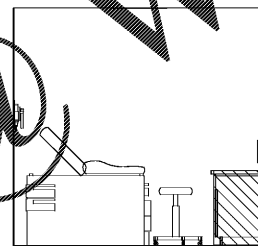
3 BD STATION - S  
 3/8" = 1'-0"



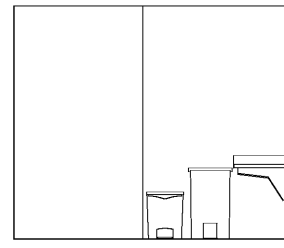
17 GROUND STAFF LOUNGE - E  
 3/8" = 1'-0"



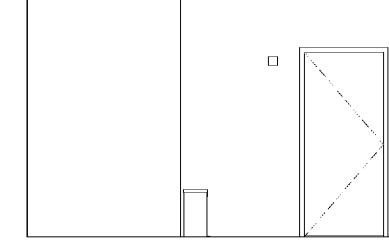
14 TYP BD LAB - W  
 3/8" = 1'-0"



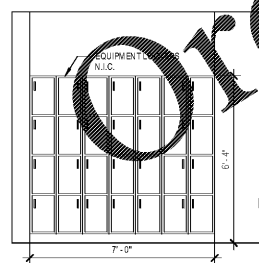
10 PAT EXAM - E  
 3/8" = 1'-0"



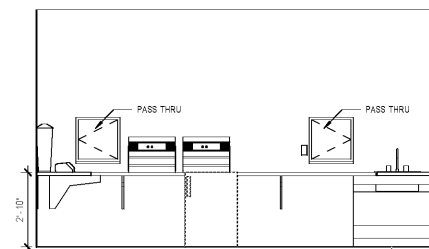
6 BD STN - E  
 3/8" = 1'-0"



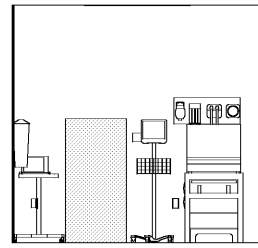
2 BD STATION - E  
 3/8" = 1'-0"



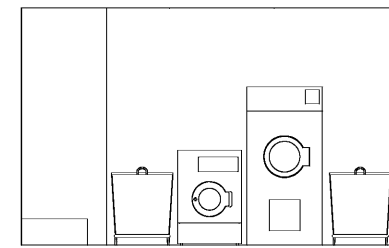
16 GROUND STAFF LOUNGE - N  
 3/8" = 1'-0"



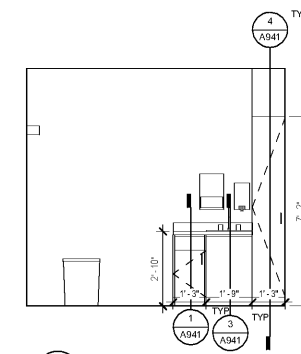
13 TYP BD LAB - E  
 3/8" = 1'-0"



9 PAT EXAM - N  
 3/8" = 1'-0"



5 EVS FLOOR CARE  
 3/8" = 1'-0"



1 BD STATION - N  
 3/8" = 1'-0"