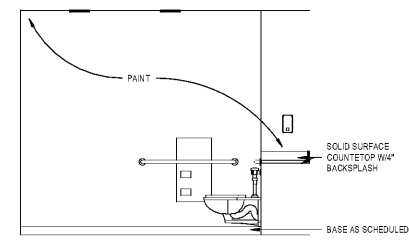
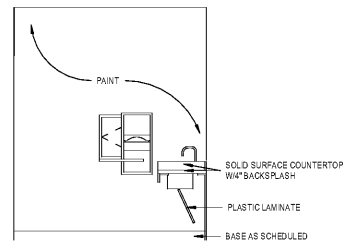


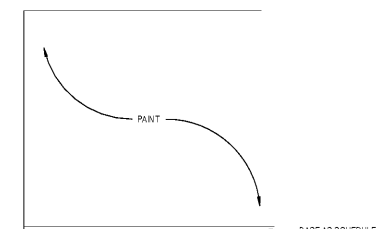
16 LEVEL 6 - TYP. PATIENT RESTROOM WEST
3/8" = 1'-0"



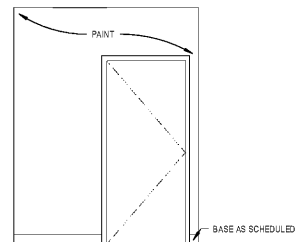
11 LVL 6-8 - TYP. PUBLIC RESTROOM EAST
3/8" = 1'-0"



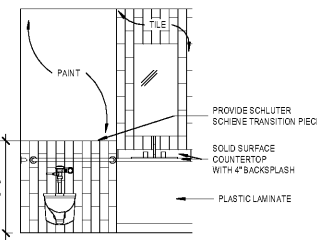
15 LEVEL 6 - TYP. PATIENT RESTROOM SOUTH
3/8" = 1'-0"



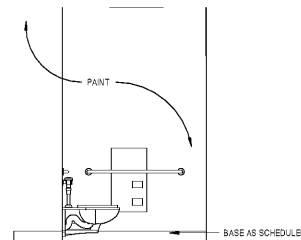
10 LVL 6-8 - TYP. PUBLIC RESTROOM NW
3/8" = 1'-0"



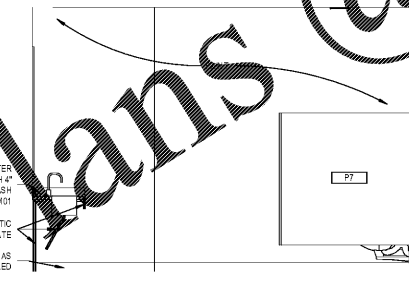
14 LEVEL 6 - TYP. PATIENT RESTROOM EAST
3/8" = 1'-0"



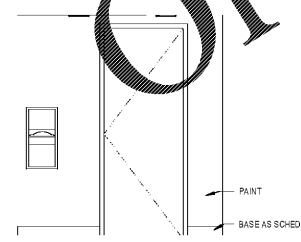
9 LVL 6-8 - TYP. PUBLIC RESTROOM SOUTH
3/8" = 1'-0"



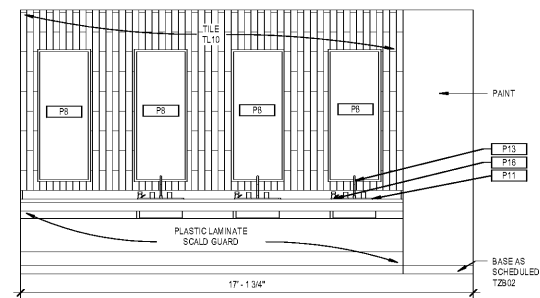
13 LEVEL 6 - TYP. PATIENT RESTROOM NORTH
3/8" = 1'-0"



8 GROUND - MEN'S RESTROOM WEST
3/8" = 1'-0"



12 LEVEL 6 - TYP. PUBLIC RESTROOM WEST
3/8" = 1'-0"



7 GROUND - MEN'S RESTROOM SOUTH
3/8" = 1'-0"

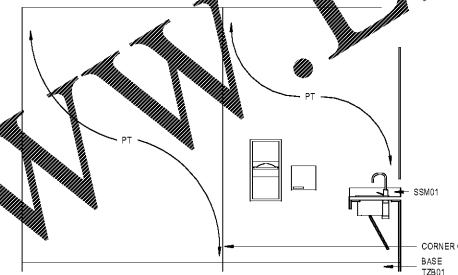
TOILET ACCESSORIES				
TAG	DESCRIPTION	MANUFACTURER	MODEL	COMMENTS
P1	HORIZONTAL GRAB BAR 36"	BOBRICK	B-8808 X 36	
P2	HORIZONTAL GRAB BAR 42"	BOBRICK	B-8808 X 42	
P3	VERTICAL GRAB BAR 18"	BOBRICK	B-8808 X 18	
P4	TOILET PAPER DISPENSER	BOBRICK	B-201	
P5	DISP. TISSUE SEATCOVER	BOBRICK	B-221	
P6	BI-MOTION RECESSED AUTOMATED TOUCHLESS TOWEL DISPENSER	GEORGIA PACIFIC	5948A	
P7	TOILET PARTITION	AMERICAN SPECIALTY, INC.		
P8	FRAMELESS TEMPERED GLASS MIRROR	LUMI DESIGN/CLARA		
P9	URNAL SCREEN	AMERICAN SPECIALTY, INC.		
P11	UNDERMOUNT SINK	KOHLER	KATHRYN-K2330	WHITE FINISH; GROUND FLOOR
P12	COAT HOOK	HAFFELBERG/ROBROE HOOK		SATIN STAINLESS STEEL FINISH
P14	TOILET SEAT	ZURN	ZS99598-EL	
P15	TRASH RECEPTACLE FOR BI-MOTION	GEORGIA PACIFIC	5947	
P16	AUTOMATED TOUCHLESS COUNTER MOUNT SOAP DISPENSER	BOBRICK	B-824	
P17	TOILET PAPER AND SANITARY MARKIN DISPOSAL	BOBRICK	B-304	
P18	HAND DRYER	TO TO	-DR111 KSS	
P19	DRINKING FOUNTAIN			
P21	URNAL			
P22	GEN 2 AUTOMATED TOUCHLESS SOAP DISPENSER	BOBRICK	B-2012	
P23	GP PRO ENMOTION GEN2 AUTOMATED TOUCHLESS SANITIZER DISPENSER	BOBRICK	B-2012	
P23	ELECTRIC FAUCET	SLOAN	338219	
P24	GOOSENECK FAUCET	SLOAN	0816409	
P25	SENBO FAUCET	SLOAN	8AF-900-P	
P26	UNDERMOUNT SINK - WALL	KOHLER	K-3622	STAINLESS STEEL; STAFF LOUNGE
P27	INTEGRATED CORIAN SINK	QORIAN	NEST 905	MATCH CORIAN COUNTER AS SCHEDULED
P28	RECESSED PASS THRU SPECIMEN CABINET	BOBRICK	B-505	SATIN STAINLESS STEEL FINISH

SHEET SPECIFIC NOTES

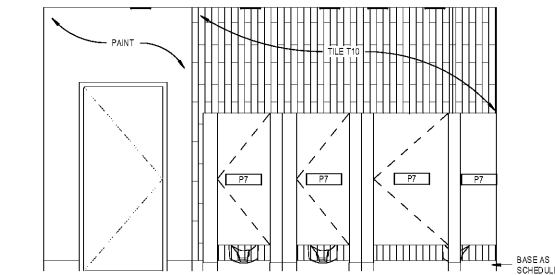
- A. GENERAL NOTES:**
1. TRUE NORTH USED FOR NORTH, EAST, SOUTH, AND WEST DESIGNATIONS. REFER TO NORTH ARROW ON FLOOR PLANS.
 2. EQUIPMENT IS SHOWN FOR SPACE PLANNING AND MOUNTING-HEIGHT PURPOSES ONLY. REFER TO MEDIAL EQUIPMENT DRAWINGS FOR QUANTITIES, DIMENSIONS, POWER REQUIREMENTS AND ADDITIONAL INFORMATION.
 3. ALL CASEWORK TO BE LOCKABLE, U.N.G.
 4. REFER TO ENLARGED PLANS, ELEVATIONS AND DETAILS FOR CLARIFICATION OF EXTENT OF FINISH MATERIALS AND ADDITIONAL INFORMATION.
 5. REFER TO A840 SERIES SHEETS FOR TYPICAL CASEWORK SCHEDULES AND GENERAL NOTES.
 6. REFER TO A220 SERIES FINISH PLANS FOR FINISH & PROTECTION SYSTEM EXTENTS AND INFORMATION.
 7. REFER TO A220.1.AZ20.1 PROTECTION SYSTEM SCHEDULES AND FINISH SCHEDULE.
 8. WHERE TRANSITION FROM WALL PROTECTION TO GYP. USE FRY REGLET TRANSITION PIECES ALLOWED.
 9. AT CORNER TRANSITION FROM WALL PROTECTION TO GYP. USE FRY REGLET W/CF 125-217 CLEAR ANODIZED.
 10. AT TRANSITION FROM WALL PROTECTION TO GYP. USE FRY REGLET W/CF 125-217 CLEAR ANODIZED.

- B. DEFINITIONS:**
1. GWS - GYPSUM WALL BOARD
 2. WPS - WALL PROTECTION SYSTEM

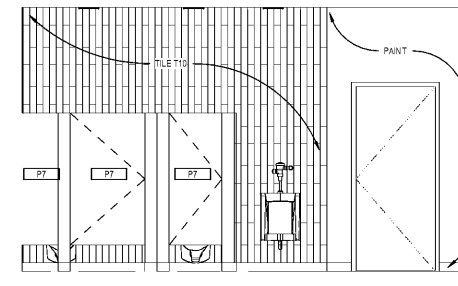
WWW.LDILine.com



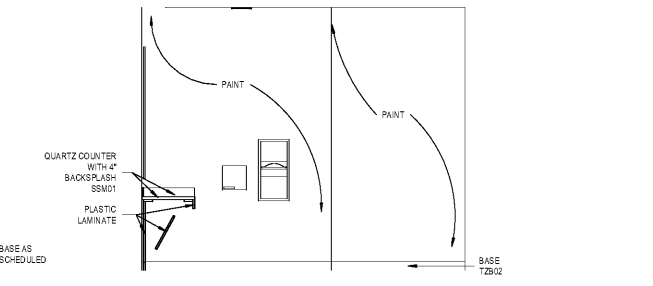
6 GROUND - MEN'S RESTROOM EAST
3/8" = 1'-0"



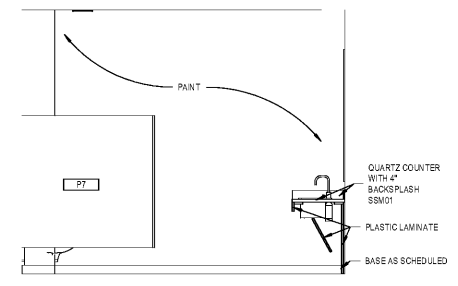
3 GROUND - WOMEN'S RESTROOM SOUTH
3/8" = 1'-0"



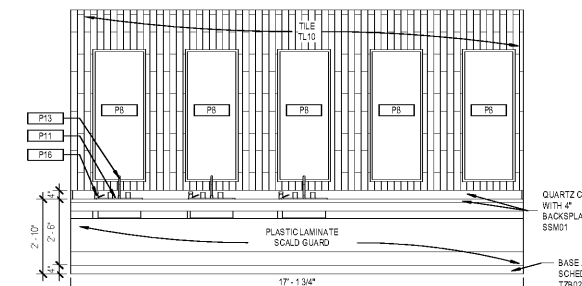
5 GROUND - MEN'S RESTROOM NORTH
3/8" = 1'-0"



2 GROUND - WOMEN'S RESTROOM EAST
3/8" = 1'-0"



4 GROUND - WOMEN'S RESTROOM WEST
3/8" = 1'-0"



1 GROUND - WOMEN'S RESTROOM NORTH
3/8" = 1'-0"



Project
**THE CENTER FOR
ADVANCED SURGICAL
SERVICES (CASS)**
80 GILMER STREET SE
ATLANTA, GA 30303

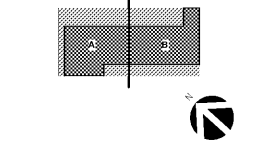
Prepared For
GRADY HEALTH SYSTEM
80 JESSE HILL DR. SE
ATLANTA, GA 30303



Helmut Obata & Kastbaum, Inc.
133 Peachtree Street, NE, Suite 4800
Atlanta, GA 30303 USA
1+1 404 439 9000 1+1 404 439 9001

All reproduction & intellectual property rights reserved © 2019
in Association with

Key Plan



Professional Seal

**NOT FOR
CONSTRUCTION**

No.	Description	Date
1	ED - GMP	2019.07.03

Project No: 18.16013.00
Sheet Title
INTERIOR ELEVATIONS

Original is 20 x 43. Do not scale contents of this drawing
Sheet Number

A605