

SHEET SPECIFIC NOTES

- A. GENERAL NOTES:
  1. TRUE NORTH USED FOR NORTH, EAST, SOUTH, AND WEST DESIGNATIONS. REFER TO NORTH ARROW ON FLOOR PLANS.
  2. EQUIPMENT IS SHOWN FOR SPACE PLANNING AND MOUNTING HEIGHT PURPOSES ONLY. REFER TO MECHANICAL EQUIPMENT DRAWINGS FOR QUANTITIES, DIMENSIONS, POWER REQUIREMENTS AND ADDITIONAL INFORMATION.
  3. ALL CASEWORK TO BE LOCKABLE, UN.C.
  4. REFER TO ENLARGED PLANS, ELEVATIONS AND DETAILS FOR CLARIFICATION OF EXTENT OF FINISH MATERIALS AND ADDITIONAL INFORMATION.
  5. REFER TO A400 SERIES SHEETS FOR TYPICAL CASEWORK SECTIONS AND GENERAL NOTES.
  6. REFER TO A220 SERIES FINISH PLANS FOR FINISH & WALL PROTECTION SYSTEM EXTENTS AND INFORMATION.
  7. REFER TO A220.1, A220.2 FOR WALL PROTECTION SYSTEMS LEVELS AND FINISH SCHEDULE.
  8. WHERE TRANSITIONS OF WALL PROTECTION OCCUR, FRY REGLET TRANSITIONS PIECES AS FOLLOWS:
    - A. AT CORNER TRANSITIONS, USE REGLET 125-217 CLEAR ANODIZED.
    - B. AT TRANSITION FROM WALL PROTECTION TO GYP, USE FRY REGLET 125-217 CLEAR ANODIZED.
    - C. AT TRANSITION FROM WALL PROTECTION TO WALL PROTECTION USE REGLET 125-217 CLEAR ANODIZED.
  9. DETAILS:
    1. G199 - G111538 WALL BOARD
    2. - WALL PROTECTION SYSTEM.



Project  
**THE CENTER FOR  
ADVANCED SURGICAL  
SERVICES (CASS)**  
80 GILMER STREET SE  
ATLANTA, GA 30303

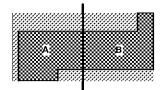
Prepared For  
**GRADY HEALTH SYSTEM**  
80 JESSE HILL DR. SE  
ATLANTA, GA 30303



Helmuth, Obata & Kassabaum, Inc.  
133 Peachtree Street, NE, Suite 4800  
Atlanta, GA 30303 USA  
+1 404 439 9000 F+1 404 439 9001

All reproduction & intellectual property rights reserved ©  
2019.  
In Association with

Key Plan



Professional Seal

**NOT FOR  
CONSTRUCTION**

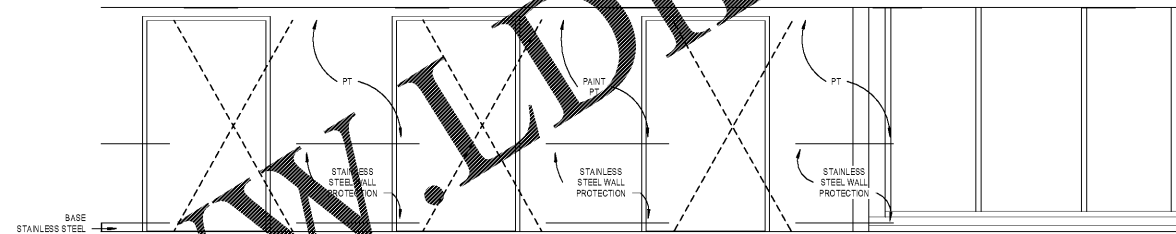
No.	Description	Date
1	ED - GMP	2019-07-03

Project No: 18.16013.00  
Sheet Title

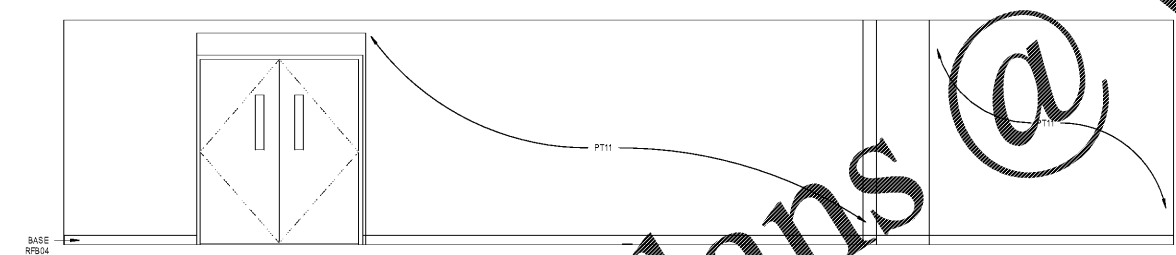
**INTERIOR ELEVATIONS**

Original is 20 x 43. Do not scale contents of this drawing.  
Sheet Number

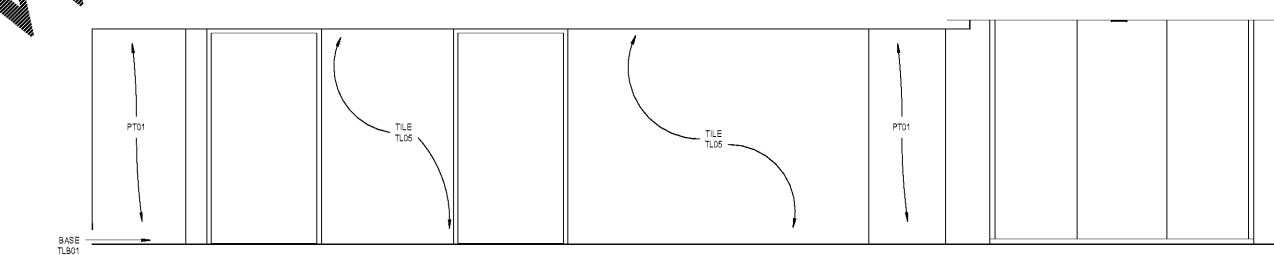
**A604**



13 LVL 1-8 STAFF ELEVATOR LOBBY EAST  
3/8" = 1'-0"



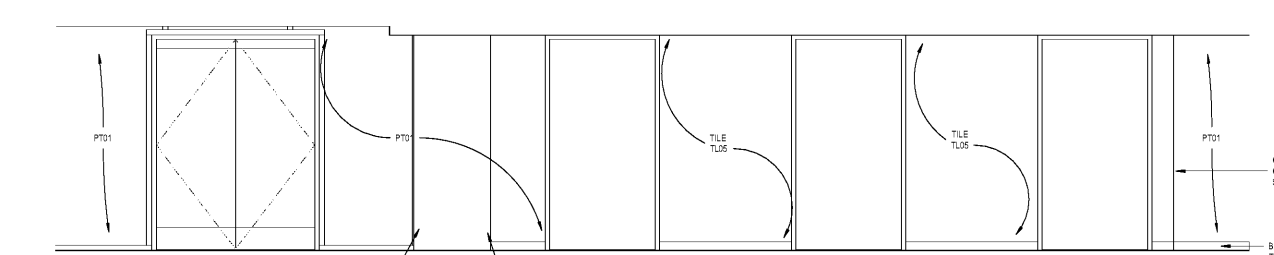
5 LVL 1-8 STAFF ELEVATOR LOBBY WEST  
3/8" = 1'-0"



2 LVL 1-4 PUBLIC PARKING ELEVATOR LOBBY SOUTH  
3/8" = 1'-0"



4 LVL 1-8 STAFF ELEVATOR LOBBY SOUTH  
3/8" = 1'-0"



1 LVL 1-4 PUBLIC PARKING ELEVATOR LOBBY NORTH  
3/8" = 1'-0"

Order Plans @

WWW.JDIDLine.com