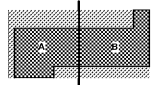




Key Plan



Professional Seal

**NOT FOR
 CONSTRUCTION**

No.	Description	Date
1	DC - GMP	2019.07.03

Project No: 18.16013.00
 Sheet Title

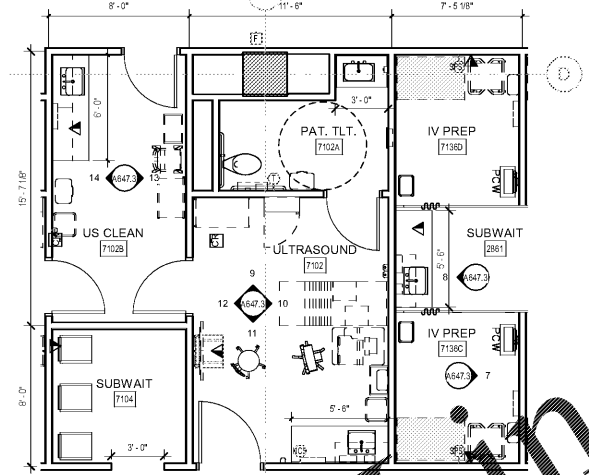
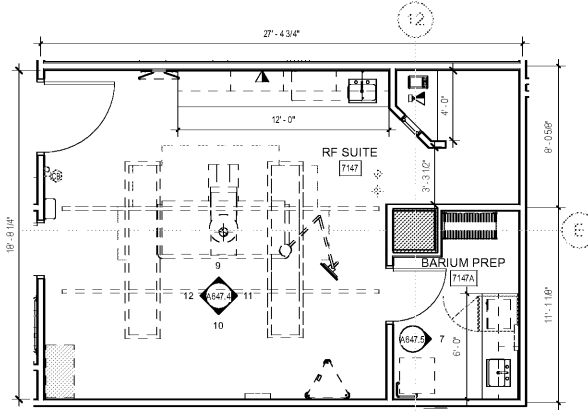
**ENLARGED PLANS -
 CLINICAL ROOMS**

Original is 20" x 42". Do not scale contents of this drawing.
 Sheet Number

A547.1

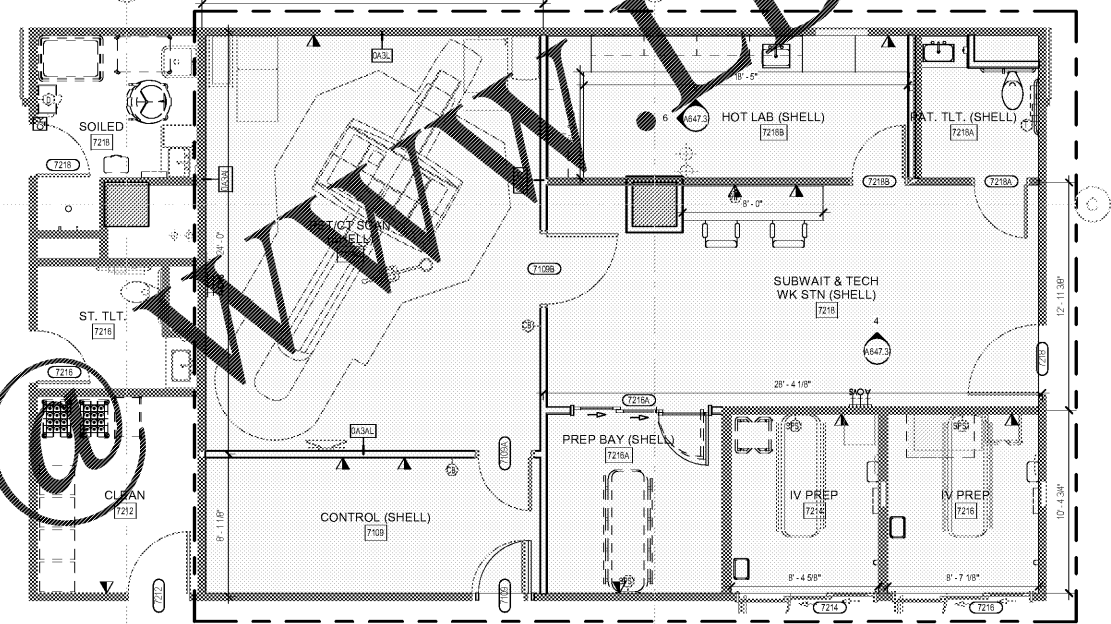
SHEET SPECIFIC NOTES

- A. GENERAL NOTES:**
- TRUE NORTH USED FOR NORTH, EAST, SOUTH, AND WEST DESIGNATIONS. REFER TO NORTH ARROW ON FLOOR PLANS.
 - EQUIPMENT IS SHOWN FOR SPACE PLANNING AND MOUNTING-HEIGHT PURPOSES ONLY. REFER TO MEDICAL EQUIPMENT DRAWINGS FOR QUANTITIES, DIMENSIONS, POWER REQUIREMENTS AND ADDITIONAL INFORMATION.
 - ALL CASWORK TO BE LOCKABLE, U.N.O.
 - REFER TO ENLARGED PLANS, ELEVATIONS AND DETAILS FOR CLARIFICATION OF EXTENT OF FINISH MATERIALS AND ADDITIONAL INFORMATION.
 - REFER TO A400 SERIES SHEETS FOR TYPICAL CASWORK SECTIONS AND GENERAL NOTES.
 - REFER TO A200 SERIES FINISH PLANS FOR FINISH & WALL PROTECTION SYSTEM EXTENTS AND INFORMATION.
 - REFER TO A220.1, A220.2 FOR WALL PROTECTION SYSTEM LEGEND AND FINISH SCHEDULE.
 - WHERE TRANSITIONS OF WALL PROTECTION OCCUR USE REGLET TRANSITIONS PIECES AS FOLLOWS:
 - AT CORNER TRANSITIONS REGLET OF 125-211 CLEAR ANODIZED
 - AT TRANSITION FROM WALL PROTECTION TO GLASS USE FRY REGLET WC15-217 CLEAR ANODIZED
 - AT TRANSITION FROM INFORMATION TO WALL PROTECTION USE WC15-217 CLEAR ANODIZED
 - DEFINITIONS:
 - GW6 - GYP/DUM WALL BOARD
 - WPS - WALL PROTECTION SYSTEM.

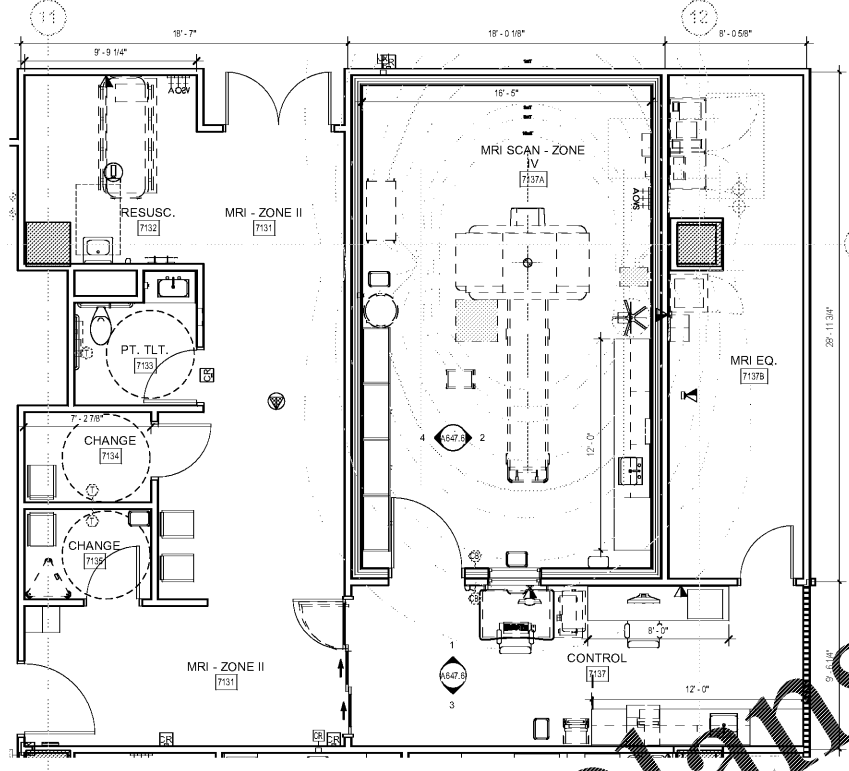


5 RF SUITE
 1/4" = 1'-0"

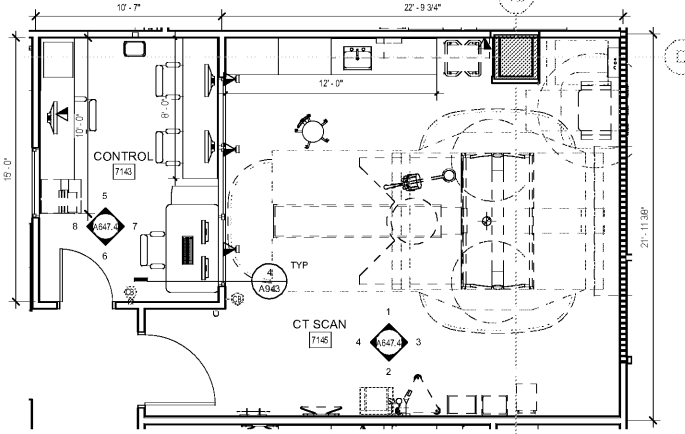
3 ULTRASOUND
 1/4" = 1'-0"



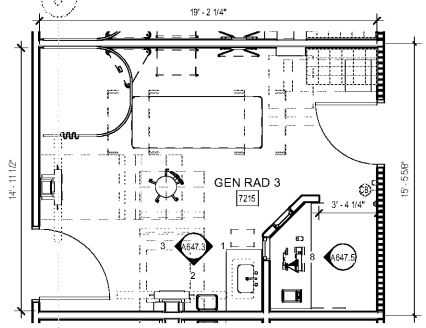
2 PET/CT SCAN
 1/4" = 1'-0"



6 MRI
 1/4" = 1'-0"



4 CT SCAN
 1/4" = 1'-0"



1 GEN RADIOLOGY
 1/4" = 1'-0"

Order Plans