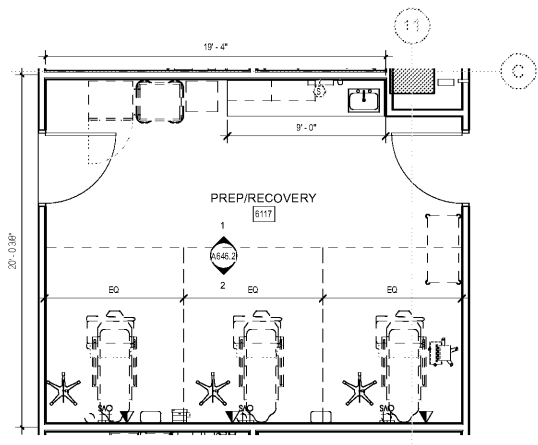
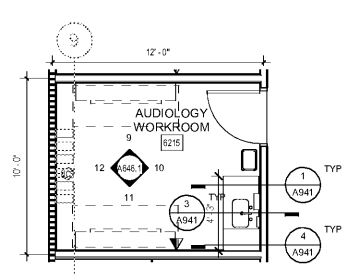


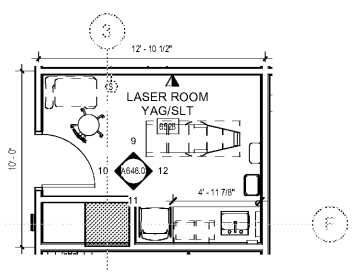
16 OMFS EXAM ROOM
1/4" = 1'-0"



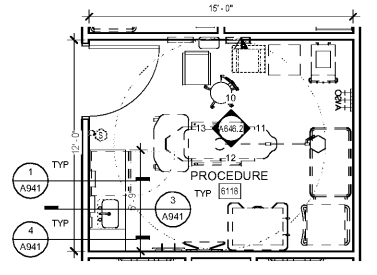
12 OMFS PREP/RECOVER
1/4" = 1'-0"



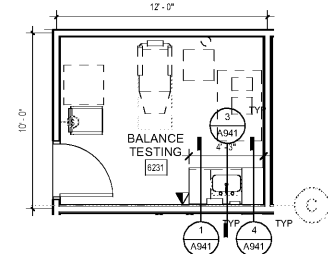
8 AUDIO WORKROOM
1/4" = 1'-0"



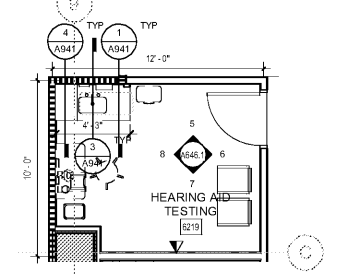
4 LASER ROOM
1/4" = 1'-0"



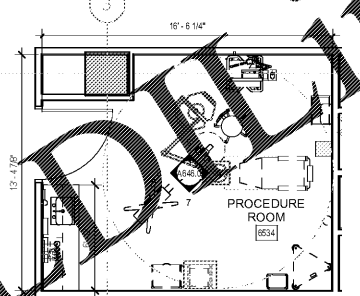
15 OMFS PROCEDURE ROOM
1/4" = 1'-0"



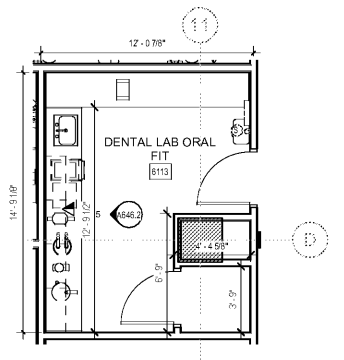
11 ENT BALANCE TESTING
1/4" = 1'-0"



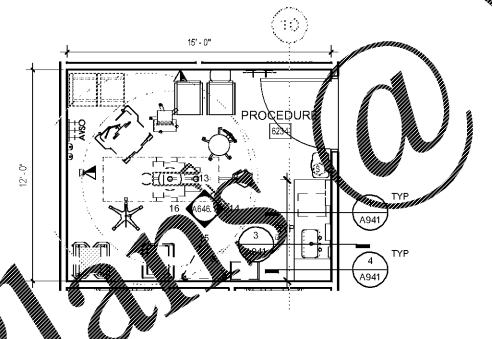
7 HEARING AID TEST
1/4" = 1'-0"



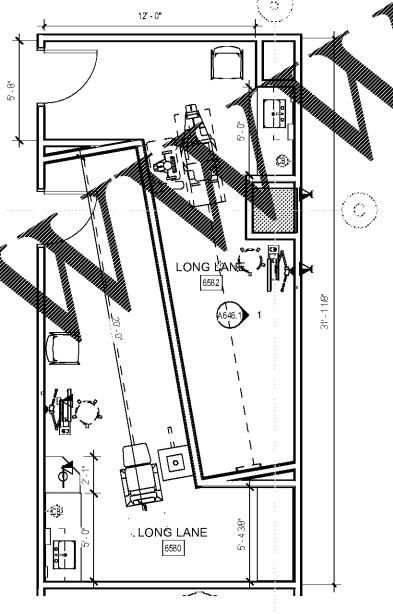
3 OPHTHALMOLOGY PROCEDURE ROOM
1/4" = 1'-0"



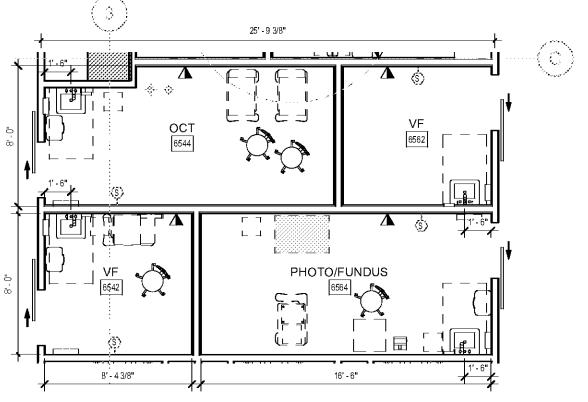
14 DENTAL LAB
1/4" = 1'-0"



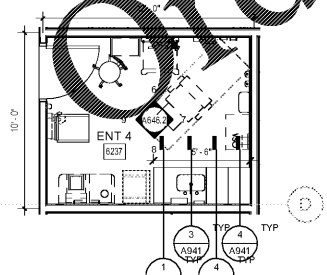
10 ENT PROCEDURE ROOM
1/4" = 1'-0"



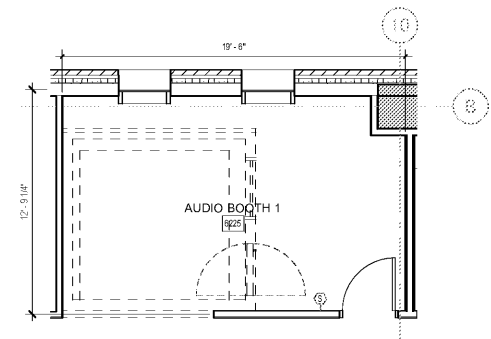
6 LONG LANE
1/4" = 1'-0"



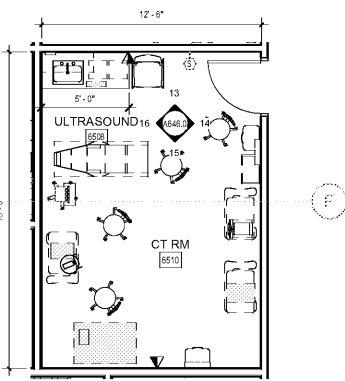
2 OCT/ VF/ PHOTO/ FUNDUS
1/4" = 1'-0"



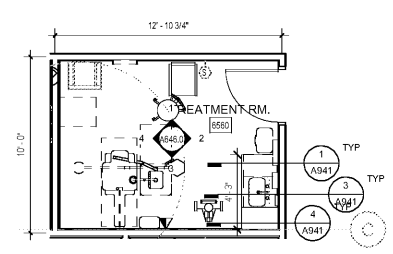
13 ENT EXAM ROOM
1/4" = 1'-0"



9 AUDIO BOOTH
1/4" = 1'-0"



5 ULTRASOUND / CT
1/4" = 1'-0"



1 OPHT TREATMENT
1/4" = 1'-0"

SHEET SPECIFIC NOTES

- A. GENERAL NOTES:**
1. TRUE NORTH USED FOR NORTH, EAST, SOUTH, AND WEST DESIGNATIONS. REFER TO NORTH ARROW ON FLOOR PLANS.
 2. EQUIPMENT IS SHOWN FOR SPACE PLANNING AND MOUNTING-HEIGHT PURPOSES ONLY. REFER TO MEDICAL EQUIPMENT DRIVES FOR QUANTITIES, DIMENSIONS, POWER REQUIREMENTS AND ADDITIONAL INFORMATION.
 3. ALL CASEWORK TO BE LOCKABLE, U.N.O.
 4. REFER TO ENLARGED PLANS, ELEVATIONS AND DETAILS FOR CLARIFICATION OF EXTENT OF FINISH MATERIALS AND ADDITIONAL INFORMATION.
 5. REFER TO A300 SERIES SHEETS FOR TYPICAL CASEWORK SECTIONS AND GENERAL NOTES.
 6. REFER TO A220 SERIES FINISH PLANS FOR FINISH & WALL PROTECTION SYSTEM EXTENTS AND INFORMATION.
 7. REFER TO A220.1, A220.2 FOR WALL PROTECTION SYSTEMS LEGEND AND FINISH SCHEDULE.
 8. WHERE TRANSITIONS OF WALL PROTECTION OCCUR, USE THE FOLLOWING TRANSITIONS PIECES AS FOLLOWS:
 - A. AT CORNER TRANSITIONS USE REGLET (TYP 125-0) CLEAR ANODIZED
 - B. AT TRANSITION FROM WALL PROTECTION TO GYP. USE FRY REGLET (TYP 125-0) CLEAR ANODIZED
 - C. AT TRANSITION FROM WALL PROTECTION TO WALL PROTECTION USE REGLET (TYP 125-0) CLEAR ANODIZED
- B. DEFINITIONS:**
1. GWB - GYPSUM WALL BOARD
 2. WPS - WALL PROTECTION SYSTEM



Project
**THE CENTER FOR
ADVANCED SURGICAL
SERVICES (CASS)**
80 GILMER STREET SE
ATLANTA, GA 30303

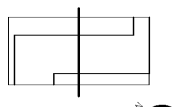
Prepared For
GRADY HEALTH SYSTEM
80 JESSE HILL DR. SE
ATLANTA, GA 30303



Helmuth, Obata & Kassabaum, Inc.
133 Peachtree Street, NE, Suite 4800
Atlanta, GA 30303 USA
T+1 404 439 9000 F+1 404 439 9001

All reproduction & intellectual property rights reserved © 2019
In Association with

Key Plan



Professional Seal

**NOT FOR
CONSTRUCTION**

No.	Description	Date
1	DC - GMP	2019.07.03

Project No: 18.16013.00
Sheet Title

**ENLARGED PLANS -
CLINICAL ROOMS**

Original is 20 x 43. Do not scale contents of this drawing
Sheet Number

A546