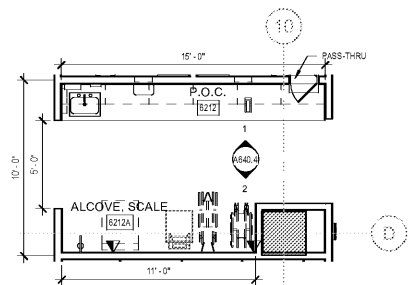
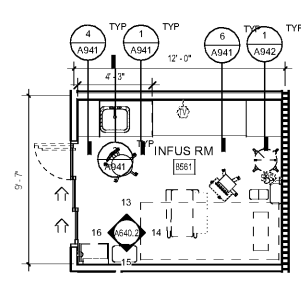


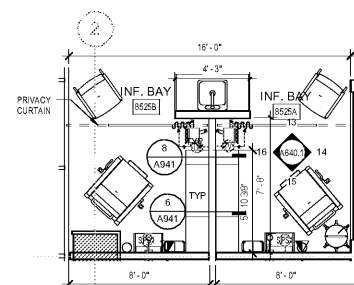
15 TYPICAL POC STATION - SMALL
1/4" = 1'-0"



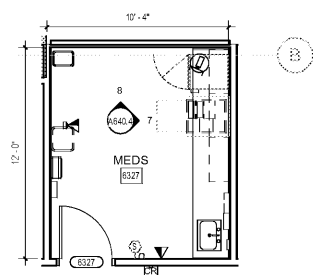
11 TYPICAL POC STATION - LARGE
1/4" = 1'-0"



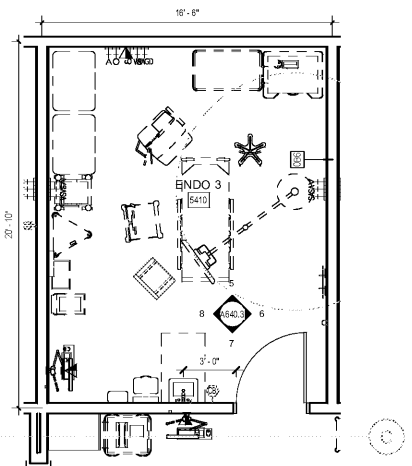
8 TYPICAL INFUSION ROOM
1/4" = 1'-0"



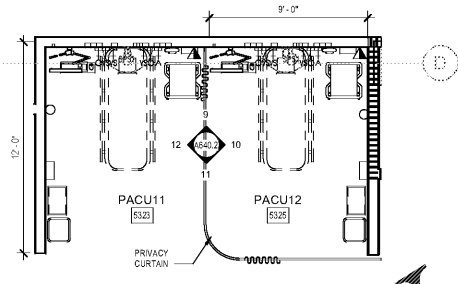
4 TYPICAL INFUSION BAYS
1/4" = 1'-0"



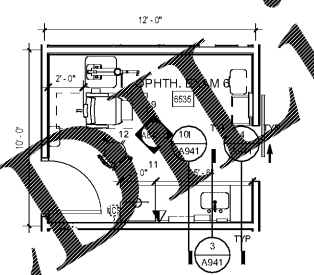
14 TYPICAL MEDS ROOM
1/4" = 1'-0"



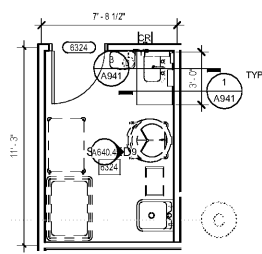
10 TYPICAL ENDO PROCEDURE ROOM
1/4" = 1'-0"



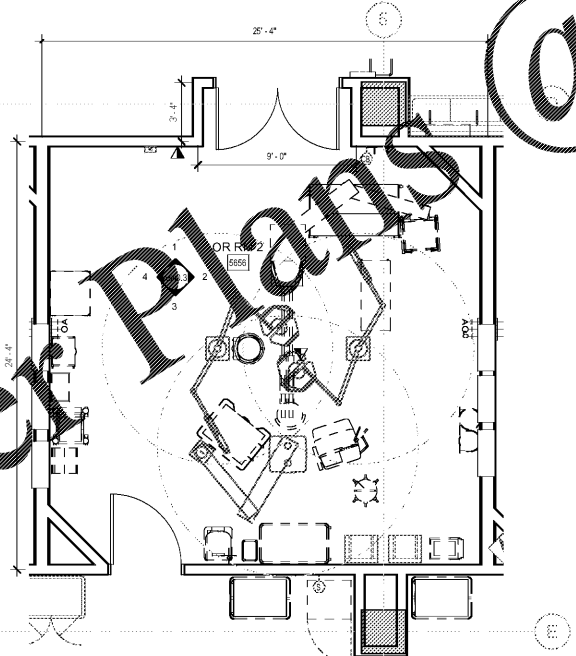
7 TYPICAL PACU BAYS
1/4" = 1'-0"



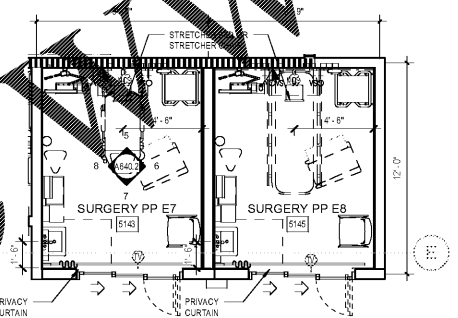
3 TYPICAL OPHTHALMOLOGY EXAM ROOM
1/4" = 1'-0"



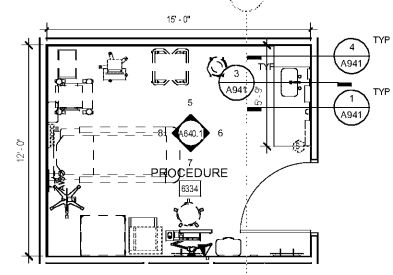
13 TYPICAL SOILED UTILITY ROOM
1/4" = 1'-0"



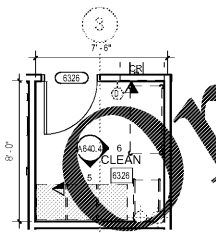
9 TYPICAL OPERATION ROOM
1/4" = 1'-0"



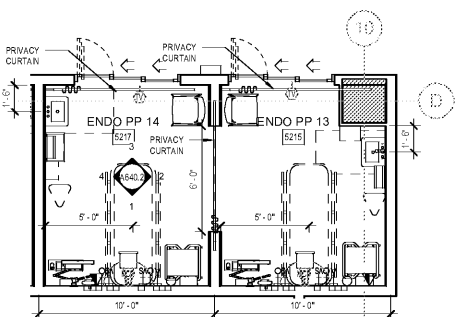
6 TYPICAL SURGERY PRE-POST OP
1/4" = 1'-0"



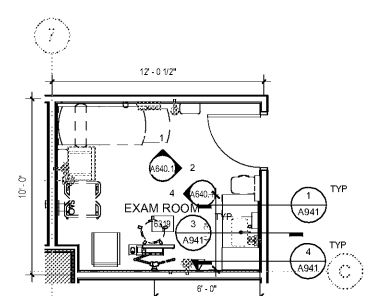
2 TYPICAL PROCEDURE ROOM
1/4" = 1'-0"



12 TYPICAL CLEAN ROOM
1/4" = 1'-0"



5 TYPICAL ENDO PRE-POST OP
1/4" = 1'-0"



1 TYPICAL EXAM ROOM
1/4" = 1'-0"

SHEET SPECIFIC NOTES

- A. GENERAL NOTES:
1. TRUE NORTH USED FOR NORTH, EAST, SOUTH, AND WEST DESIGNATIONS. REFER TO NORTH ARROW ON FLOOR PLANS.
 2. EQUIPMENT IS SHOWN FOR SPACE PLANNING AND MOUNTING HEIGHT PURPOSES ONLY. REFER TO MEDICAL EQUIPMENT DRAWINGS FOR QUANTITIES, DIMENSIONS, POWER REQUIREMENTS AND ADDITIONAL INFORMATION.
 3. ALL CASEWORK TO BE LOCKABLE, U.N.O.
 4. REFER TO ENLARGED PLANS, ELEVATIONS AND DETAILS FOR CLARIFICATION OF EXTENT OF FINISH MATERIALS AND ADDITIONAL INFORMATION.
 5. REFER TO A340 SERIES SHEETS FOR TYPICAL CASEWORK SECTIONS AND GENERAL NOTES.
 6. REFER TO A220 SERIES FINISH PLANS FOR FINISH & WALL PROTECTION SYSTEM EXTENTS AND INFORMATION.
 7. REFER TO A220.1, A220.2 FOR WALL PROTECTION SYSTEM LEGENDS & FINISH SCHEDULE.
 8. WHERE TRANSITIONS OF WALL PROTECTION OCCUR USE THE REGLET TRANSITION PIECES AS FOLLOWS:
 - A. AT CORNER TRANSITIONS USE REGLET #15-217 CLEAR ANODIZED.
 - B. AT TRANSITION FROM WALL PROTECTION TO C.P.P. USE PRY REGLET WITH #15-217 CLEAR ANODIZED.
 - C. AT TRANSITION FROM WALL PROTECTION TO WALL PROTECTION USE WALL #15-217 CLEAR ANODIZED.
 9. DEFINITIONS:
 1. GWS - GYPSUM WALL BOARD
 2. W.P.S. - WALL PROTECTION SYSTEM.



Project
THE CENTER FOR
ADVANCED SURGICAL
SERVICES (CASS)
80 GILMER STREET SE
ATLANTA, GA 30303

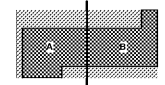
Prepared For
GRADY HEALTH SYSTEM
80 JESSE HILL DR. SE
ATLANTA, GA 30303



Hok, Inc. - Davis & Kastbaum, Inc.
133 Peachtree Street, NE, Suite 4800
Atlanta, GA 30303 USA
+1 404 439 9000 F+1 404 439 9001

All reproduction & intellectual property rights reserved © 2019
in Association with

Key Plan



Professional Seal

NOT FOR
CONSTRUCTION

No.	Description	Date
1	DD - GMP	2019.07.03

Project No: 18.16013.00
Sheet Title
TYPICAL CLINICAL
PLANS

Original is 20 x 30. Do not scale contents of this drawing
Sheet Number

A540