

Project  
**THE CENTER FOR  
 ADVANCED SURGICAL  
 SERVICES (CASS)**  
 80 GILMER STREET SE  
 ATLANTA, GA 30303

Prepared For  
**GRADY HEALTH SYSTEM**  
 80 JESSE HILL DR. SE  
 ATLANTA, GA 30303

LEVEL 9 - PH  
 1142'-0"



LEVEL 8  
 1127'-0"

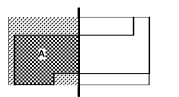
Helmut Obata & Kastbaum, Inc.  
 133 Peachtree Street, NE, Suite 4800  
 Atlanta, GA 30303 USA  
 T+1 404 439 9000 F+1 404 439 9001

All reproduction & intellectual property rights reserved ©  
 2019  
 In Association with

LEVEL 7  
 1112'-0"

Key Plan

LEVEL 6  
 1097'-0"



Professional Seal

**NOT FOR  
 CONSTRUCTION**

No.	Description	Date
1	ED - GMP	2019-07-03

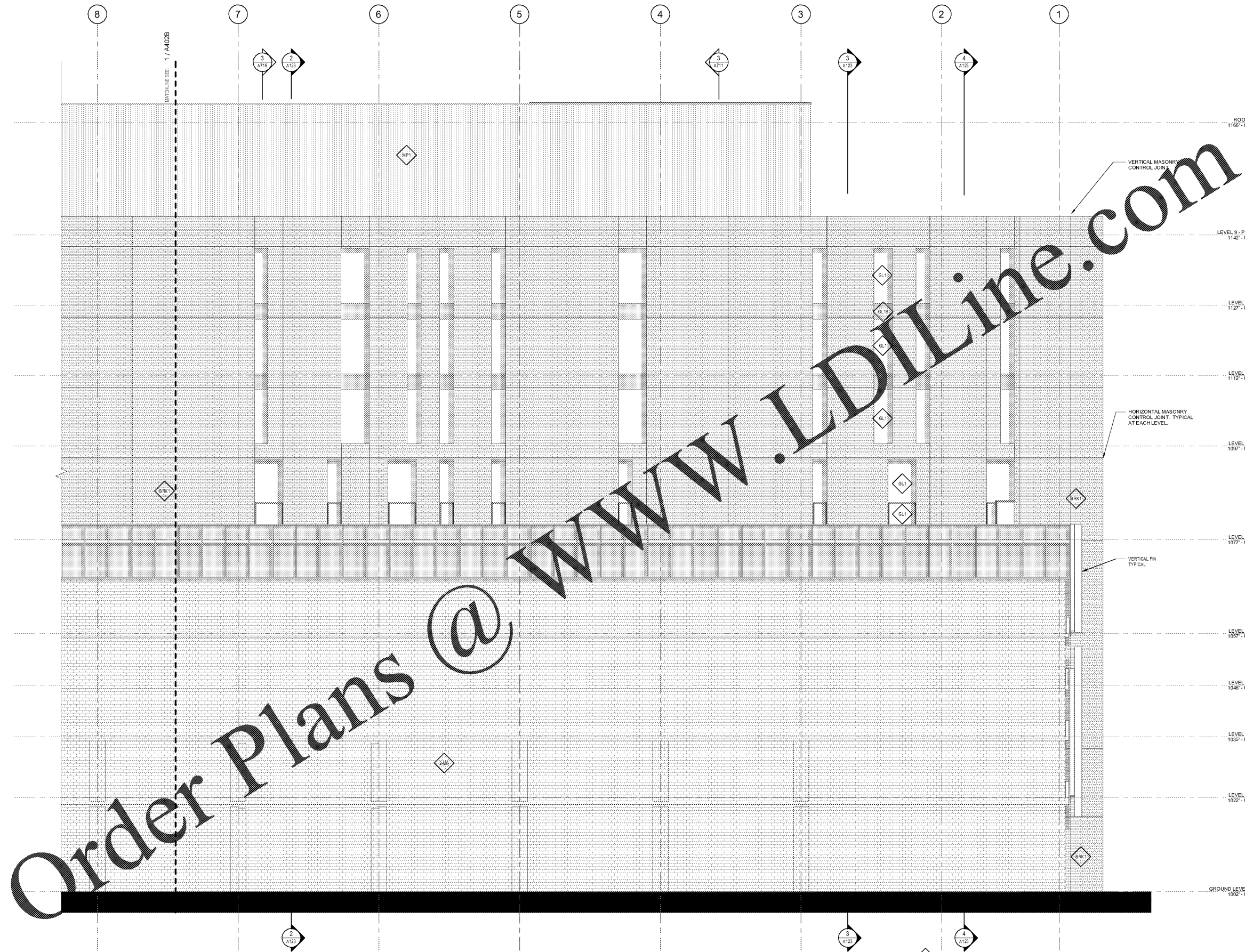
LEVEL 4  
 1057'-0"

LEVEL 3  
 1046'-0"

LEVEL 2  
 1035'-0"

LEVEL 1  
 1022'-0"

GROUND LEVEL  
 1002'-0"



Order Plans @

**1** ELEVATION - NORTH - WEST  
 1/8" = 1'-0"

**MATERIAL TAG**

BRK1 - UTILITY BRICK #1 - LIGHT	OW1 - CURTAIN WALL #1 (2-SIDE SSG) WITH EXTENDED HORIZONTAL
BRK2 - UTILITY BRICK #2 - DARK	OW2 - CURTAIN WALL #2 (2-SIDE SSG) WITH EXTENDED VERTICAL
MP1 - VERTICAL RB. CORRUGATED METAL WALL PANEL	OW3 - CURTAIN WALL #3 (4-SIDE SSG)
MP2 - VERTICAL RB. CORRUGATED METAL WALL PANEL, PERFORATED	GL1 - 1" INSULATED GLASS UNIT
MP3 - METAL PLATE PANEL	GL2 - 1" INSULATED GLASS UNIT (SPANDREL, SHADOW BOX)
	PT1 - EXTERIOR PAINT (EXTERIOR METALS) - MICA
	XPT-2 - EXTERIOR ALUMINUM LOUVER

Project No: 18.16013.00

Sheet Title

**NORTH ELEVATION -  
 WEST**

Original is 30 x 42. Do not scale contents of this drawing.  
 Sheet Number

**A402A**