

Project
**THE CENTER FOR
 ADVANCED SURGICAL
 SERVICES (CASS)**
 80 GILMER STREET SE
 ATLANTA, GA 30303

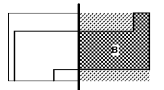
Prepared For
GRADY HEALTH SYSTEM
 80 JESSE HILL DR. SE
 ATLANTA, GA 30303



Helmut, Obata & Kassabaum, Inc.
 133 Peachtree Street, NE, Suite 4800
 Atlanta, GA 30303 USA
 T+1 404 439 9000 F+1 404 439 9001

All reproduction & intellectual property rights reserved ©
 2019
 In Association with

Key Plan



Professional Seal

**NOT FOR
 CONSTRUCTION**

| No. | Description | Date |
|-----|-------------|------------|
| 1 | ED - GMP | 2019.07.03 |

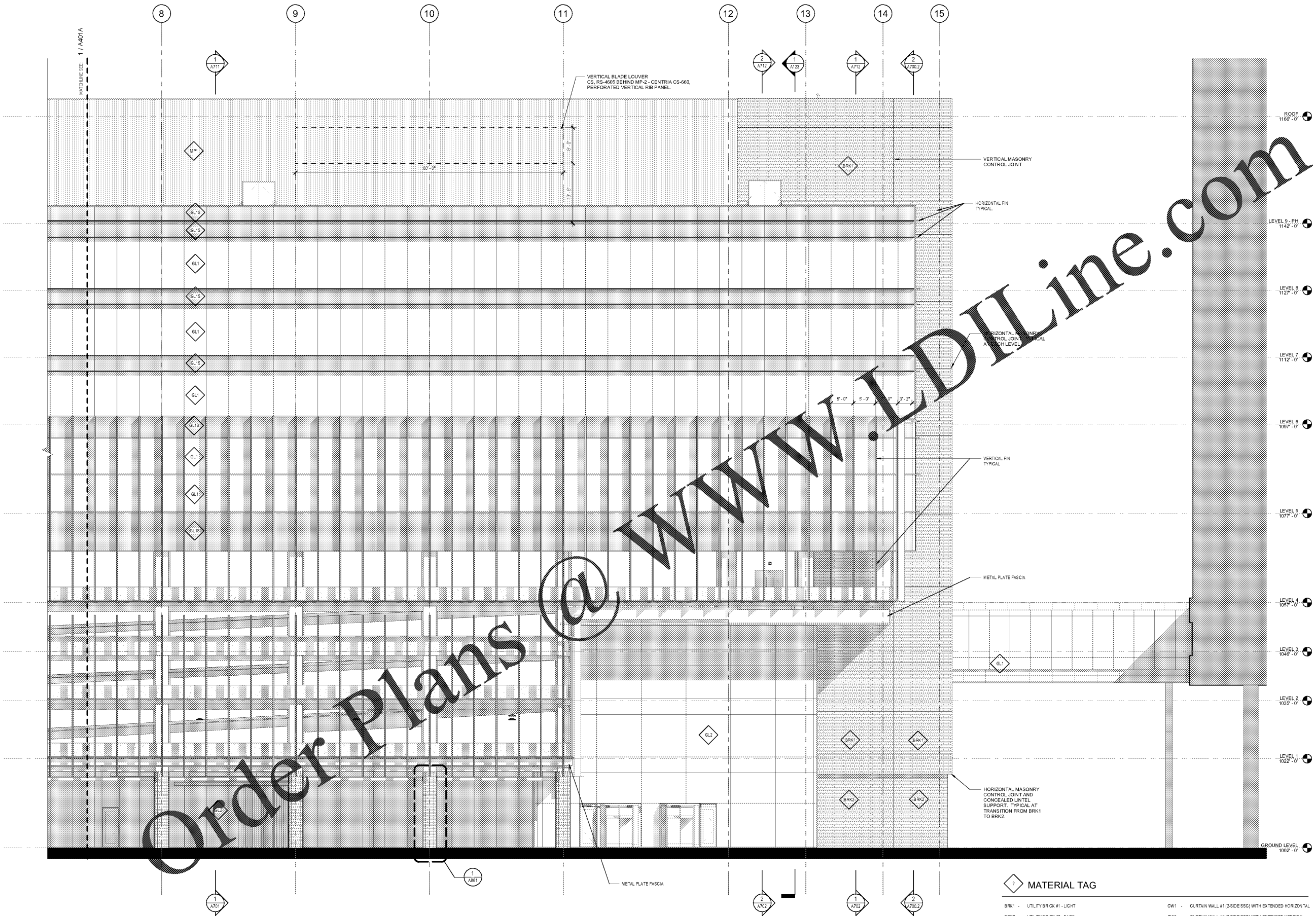
Project No: 18.16013.00

Sheet Title

**SOUTH ELEVATION -
 EAST**

Original is 30 x 42. Do not scale contents of this drawing
 Sheet Number

A401B



1 ELEVATION - SOUTH - EAST
 1/8" = 1'-0"

MATERIAL TAG

| | |
|---|---|
| BRK1 - UTILITY BRICK #1 - LIGHT | CW1 - CURTAIN WALL #1 (2-SIDE SSG) WITH EXTENDED HORIZONTAL |
| BRK2 - UTILITY BRICK #2 - DARK | CW2 - CURTAIN WALL #2 (2-SIDE SSG) WITH EXTENDED VERTICAL |
| MP1 - VERTICAL RIB, CORRUGATED METAL WALL PANEL | CW3 - CURTAIN WALL #3 (4-SIDE SSG) |
| MP2 - VERTICAL RIB, CORRUGATED METAL WALL PANEL, PERFORATED | GL1 - 1" INSULATED GLASS UNIT |
| MP3 - METAL PLATE PANEL | GL1S - 1" INSULATED GLASS UNIT (SPANDREL, SHADOW BOX) |
| | PT1 - EXTERIOR PAINT (EXTERIOR METALS) - MICA |
| | XPT-2 - EXTERIOR ALUMINUM LOUVER |