



Project  
**THE CENTER FOR  
 ADVANCED SURGICAL  
 SERVICES (CASS)**  
 80 GILMER STREET SE  
 ATLANTA, GA 30303

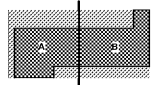
Prepared For  
**GRADY HEALTH SYSTEM**  
 80 JESSE HILL DR. SE  
 ATLANTA, GA 30303



Helmut Obata & Kestbaum, Inc.  
 133 Peachtree Street, NE, Suite 4800  
 Atlanta, GA 30303 USA  
 T+1 404 439 9000 F+1 404 439 9001

All reproduction & intellectual property rights reserved © 2019  
 in Association with

Key Plan



Professional Seal

**NOT FOR  
 CONSTRUCTION**

No.	Description	Date
1	ED - GMP	2019.07.03

Project No: 18.16013.00  
 Sheet Title

**LEVEL 4 REFLECTED  
 CEILING PLAN - EAST**

Original is 30 x 42. Do not scale contents of this drawing  
 Sheet Number

**A304B**

**RCP LEGEND**

**MATERIALS**

- 2' x 2' GRID AND TILE SYSTEM - SEE SPECIFICATIONS
- 2' x 4' GRID AND ACOUSTICAL TILE SYSTEM - SEE SPECIFICATIONS
- GYPSUM BOARD CEILING AS INDICATED ON PLAN. SEE FINISH PLAN FOR PAINT SPECIFICATIONS
- WOOD SLAT SUSPENDED CEILING SYSTEM
- UNDERSIDE OF WOOD VENEER PORTAL
- GSI: INSULATED GYPSUM SOFFIT
- ACOUSTIC TILE

**ANNOTATIONS**

- CEILING HEIGHT AS INDICATED ON PLAN UNL.

**LIGHT FIXTURES**

- 2' x 2' RECESSED SEMI-INDIRECT LUMINAIRE
  - 2' x 4' RECESSED SEMI-INDIRECT LUMINAIRE
  - RECESSED LINEAR LUMINAIRE - REFER TO ELEC DRAWINGS FOR LENGTH AND MOUNTING HEIGHT
  - LINEAR LED STRIP LIGHT
  - RECESSED DOWNLIGHT - ROUND
  - RECESSED DOWNLIGHT - SQUARE
  - COVE LIGHT
  - CEILING SURFACE MOUNTED STRIP LIGHT
  - PENDANT
  - PENDANT WITH DIRECT / INDIRECT LED
  - UNDER CABINET
  - UPLIGHT STRIP
- SHADES**
- WINDOW SHADES - MOTORIZED
  - WINDOW SHADES - MANUAL

**POWER & TELEDATA**

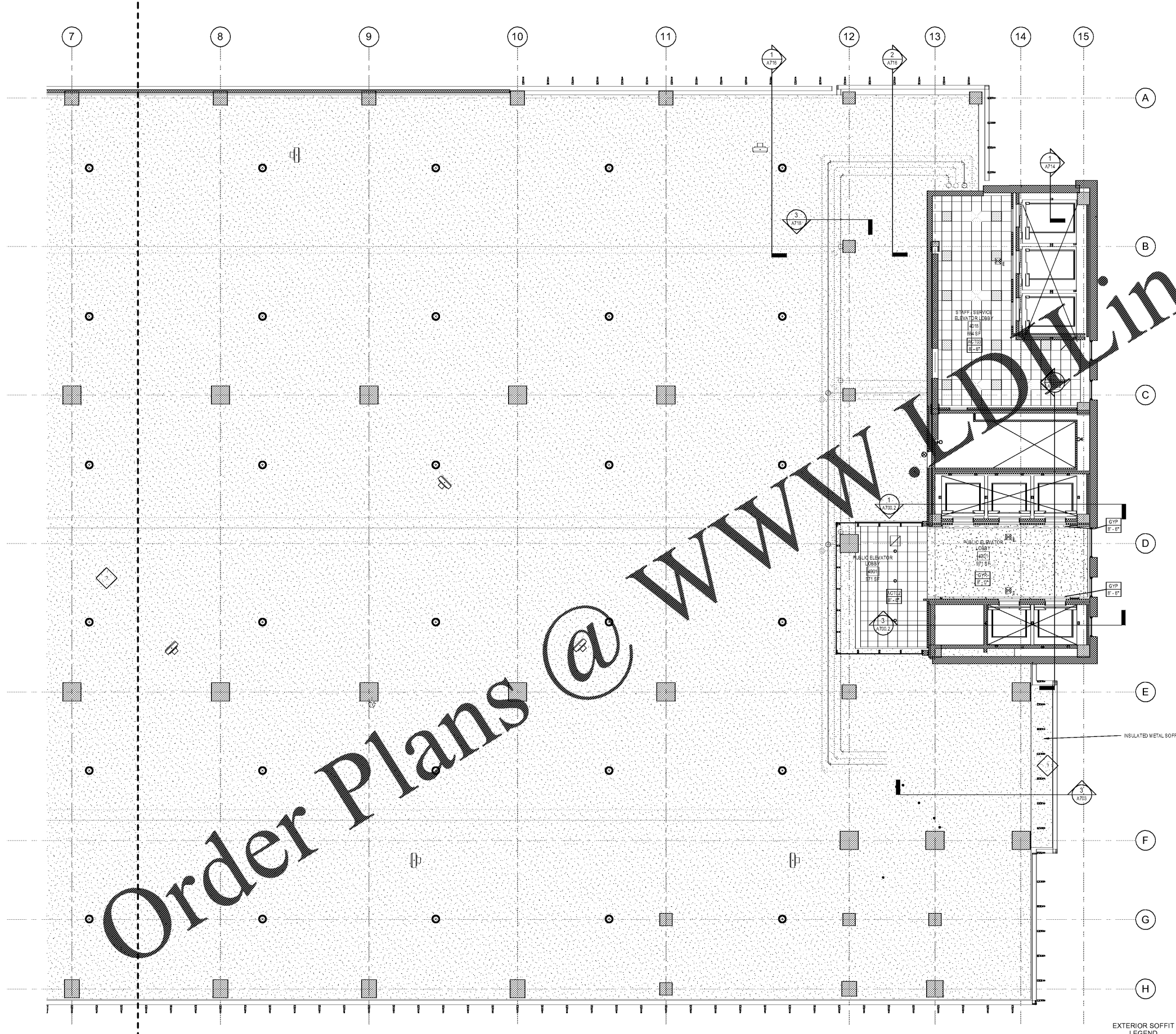
- FF FURNITURE FEED, POWER POLE AS INDICATED
- OS OCCUPANCY SENSOR
- AS AUDIO SPEAKER
- P PROJECTOR
- EPS PROJECTION SCREEN - ELECTRONIC
- MPS PROJECTION SCREEN - MANUAL

**LIFE SAFETY**

- ES EXIT SIGN, ARROW INDICATES PATH OF TRAVEL
- SD SMOKE DETECTOR
- LSS LIFE SAFETY SPEAKER STROBE
- LSP LIFE SAFETY SPEAKER
- LST LIFE SAFETY STROBE
- S SPRINKLER

**KEY NOTES**

- THESE NOTES ARE FOR THE PURPOSE OF DD COORDINATION ONLY
1. KEY ROOMS TO HAVE 2' X 2' ACOUSTICAL CEILING TILE, TWO 2' X 4' RECESSED LUMINAIRE UNL.
  2. COORDINATE LIGHTING FOR ALL SPECIALTY KEY ROOMS  
 \* LIGHT FIXTURES IN IMAGING AND EYE CLINICS TO HAVE DIMMABLE CAPABILITIES
  3. COORDINATE ANY SPECIFIC EQUIPMENT WITH LIGHTING IMPLICATIONS (I.E. MEDICAL INTENSIVE ROOMS) WITH APPROPRIATE CONSULTANTS
  4. PERIMETER LIGHTING AT CORRIDORS TO ILLUMINATE THE PATIENT SIDE AS A WAY FINDING METHOD
  5. COORDINATE SPOT LED FIXTURES AT NURSE STATIONS AND IMPORTANT LANDMARKS
  6. PARKING LEVEL FIXTURES ARE SHOWN FOR LOCATION ONLY. REFER TO ELECTRICAL LIGHTING PLANS FOR QUANTITIES AND SPECIFICATIONS.



EXTERIOR SOFFIT  
 LEGEND

**1 REFLECTED CEILING PLAN - LEVEL 4 - EAST**  
 1/8" = 1'-0"