



Project
**THE CENTER FOR
 ADVANCED SURGICAL
 SERVICES (CASS)**
 80 GILMER STREET SE
 ATLANTA, GA 30303

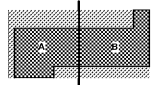
Prepared For
GRADY HEALTH SYSTEM
 80 JESSE HILL DR. SE
 ATLANTA, GA 30303



Helmut Obata & Kastbaum, Inc.
 133 Peachtree Street, NE, Suite 4800
 Atlanta, GA 30303 USA
 T+1 404 439 9000 F+1 404 439 9001

All reproduction & intellectual property rights reserved ©
 2019. In Association with

Key Plan



Professional Seal



**NOT FOR
 CONSTRUCTION**

No.	Description	Date
1	ED - GMP	2019-07-03

RCP LEGEND

MATERIALS

- 2' x 2' GRID AND TILE SYSTEM - SEE SPECIFICATIONS
- 2' x 4' GRID AND ACOUSTICAL TILE SYSTEM - SEE SPECIFICATIONS
- GYPSUM BOARD CEILING AS INDICATED ON PLAN. SEE FINISH PLAN FOR PAINT SPECIFICATIONS
- WOOD SLAT SUSPENDED CEILING SYSTEM
- UNDERSIDE OF WOOD VENEER PORTAL
- GSI: INSULATED GYPSUM BOARD - 5/8" SOFT
- EXTERIOR STUCCO

ANNOTATIONS

- CEILING HEIGHT AS INDICATED ON PLAN UNL.

LIGHT FIXTURES

- 2' x 2' RECESSED SEMI-INDIRECT LUMINAIRE
- 2' x 4' RECESSED SEMI-INDIRECT LUMINAIRE
- RECESSED LINEAR LUMINAIRE - REFER TO ELEC DRAWINGS FOR LENGTH AND MOUNTING HEIGHT
- LINEAR LED STRIP LIGHT
- RECESSED DOWNLIGHT - ROUND
- RECESSED DOWNLIGHT - SQUARE
- COVE LIGHT
- CEILING SURFACE MOUNTED STRIP LIGHT
- PENDANT
- PENDANT MTD DIRECT / INDIRECT LED
- UNDER CABINET
- UPLIGHT STRIP

SHADES

- WINDOW SHADES - MOTORIZED
- WINDOW SHADES - MANUAL

POWER & TELEDATA

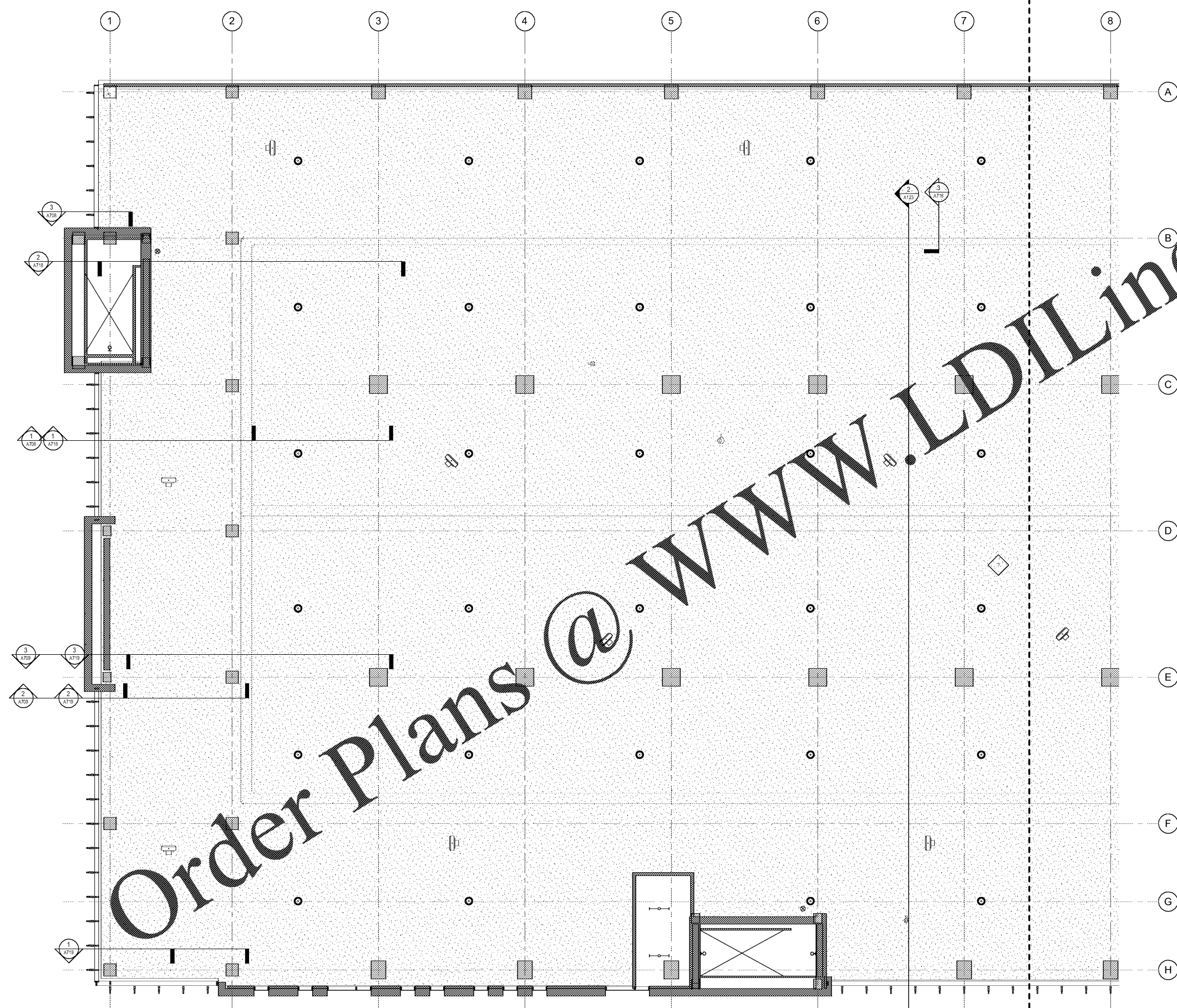
- FURNITURE FEED, POWER POLE AS INDICATED
- OCCUPANCY SENSOR
- AUDIO SPEAKER
- PROJECTOR
- PROJECTION SCREEN - ELECTRONIC
- PROJECTION SCREEN - MANUAL

LIFE SAFETY

- EXIT SIGN, ARROW INDICATES PATH OF TRAVEL
- SMOKE DETECTOR
- LIFE SAFETY SPEAKER
- STROBE
- LIFE SAFETY STROBE
- SPRINKLER

KEY NOTES

- THESE NOTES ARE FOR THE PURPOSE OF DD COORDINATION ONLY
1. KEY ROOMS TO HAVE 2' x 2' ACOUSTICAL CEILING TILE, TWO 2' x 4' RECESSED LUMINAIRE, UNL.
 2. COORDINATE LIGHTING FOR ALL SPECIALTY KEY ROOMS
 - LIGHT FIXTURES IN IMAGING AND EYE CLINICS TO HAVE DIMMABLE CAPABILITIES
 3. COORDINATE ANY SPECIFIC EQUIPMENT WITH LIGHTING IMPLICATIONS (I.E. MEDICAL INTENSIVE ROOMS) WITH APPROPRIATE CONSULTANTS
 4. PERIMETER LIGHTING AT CORRIDORS TO ILLUMINATE THE PATIENT SIDE AS A WAY FINDING METHOD
 5. COORDINATE SPOT LED FIXTURES AT NURSE STATIONS AND IMPORTANT LANDMARKS
 6. PARKING LEVEL FIXTURES ARE SHOWN FOR LOCATION ONLY. REFER TO ELECTRICAL LIGHTING PLANS FOR QUANTITIES AND SPECIFICATIONS.



1 REFLECTED CEILING PLAN - LEVEL 4 - WEST
 1/8" = 1'-0"