

RCP LEGEND

- MATERIALS**
- 2' x 2' GRID AND TILE SYSTEM - SEE SPECIFICATIONS
 - 2' x 4' GRID AND ACOUSTICAL TILE SYSTEM - SEE SPECIFICATIONS
 - GYPSUM BOARD CEILING AS INDICATED ON PLAN. SEE FINISH PLAN FOR PAINT SPECIFICATIONS
 - WOOD SLAT SUSPENDED CEILING SYSTEM
 - UNDERSIDE OF WOOD VENEER PORTAL
 - G81 INSULATED GYPSUM BOARD JOIST
 - EXTERIOR
- ANNOTATION**
- FINISHED CEILING HEIGHT AS INDICATED ON PLAN UON.
- LIGHT FIXTURES**
- 2' x 2' RECESSED SEMI-DIRECT LUMINAIRE
 - 2' x 4' RECESSED SEMI-DIRECT LUMINAIRE
 - RECESSED LINEAR LUMINAIRE - REFER TO ELEC DRAWINGS FOR LENGTH AND MOUNTING HEIGHT
 - LINEAR LED STRIP LIGHT
 - RECESSED DOWNLIGHT - ROUND
 - RECESSED DOWNLIGHT - SQUARE
 - COVE LIGHT
 - CEILING SURFACE MOUNTED STRIP LIGHT
 - PENDANT
 - PENDANT MTD DIRECT / NDIRECT LED
 - UNDER CABINET
 - UPLIGHT STRIP

- SHADES**
- WINDOW SHADES - MOTORIZED
 - WINDOW SHADES - MANUAL
- POWER & TELEDATA**
- FURNITURE FEED, POWER POLE AS INDICATED
 - OCCUPANCY SENSOR
 - AUDIO SPEAKER
 - PROJECTOR
 - PROJECTION SCREEN - ELECTRONIC
 - PROJECTION SCREEN - MANUAL

- LIFE SAFETY**
- EXIT SIGN, ARROW INDICATES PATH OF TRAVEL
 - SMOKE DETECTOR
 - LIFE SAFETY SPEAKER
 - STROBE
 - LIFE SAFETY SPEAKER
 - LIFE SAFETY STROBE
 - SPRINKLER

- KEY NOTES**
- THESE NOTES ARE FOR THE PURPOSE OF DD COORDINATION ONLY
1. KEY ROOMS TO HAVE 2' X 2' ACOUSTICAL CEILING TILE, TWO 2' X 4' RECESSED LUMINAIRE, UON.
 2. COORDINATE LIGHTING FOR ALL SPECIALTY KEY ROOMS
 - LIGHT FIXTURES IN IMAGING AND EYE CLINICS TO HAVE DIMMABLE CAPABILITIES
 3. COORDINATE ANY SPECIFIC EQUIPMENT WITH LIGHTING IMPLICATIONS (I.E. MEDICAL INTENSIVE ROOMS) WITH APPROPRIATE CONSULTANTS
 4. PERIMETER LIGHTING AT CORRIDORS TO ILLUMINATE THE PATIENT SIDE AS A WAY FINDING METHOD
 5. COORDINATE SPOT LED FIXTURES AT NURSE STATIONS AND IMPORTANT LANDMARKS
 6. PARKING LEVEL FIXTURES ARE SHOWN FOR LOCATION ONLY. REFER TO ELECTRICAL LIGHTING PLANS FOR QUANTITIES AND SPECIFICATIONS.



Project
**THE CENTER FOR
 ADVANCED SURGICAL
 SERVICES (CASS)**
 80 GILMER STREET SE
 ATLANTA, GA 30303

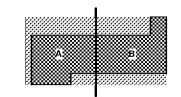
Prepared For
GRADY HEALTH SYSTEM
 80 JESSE HILL DR. SE
 ATLANTA, GA 30303



Hok, Inc. - Davis & Kistebaum, Inc.
 133 Peachtree Street, NE, Suite 4800
 Atlanta, GA 30303 USA
 +1 404 439 9000 +1 404 439 9001

All reproduction & intellectual property rights reserved © 2019
 An Association with

Key Plan



Professional Seal

**NOT FOR
 CONSTRUCTION**

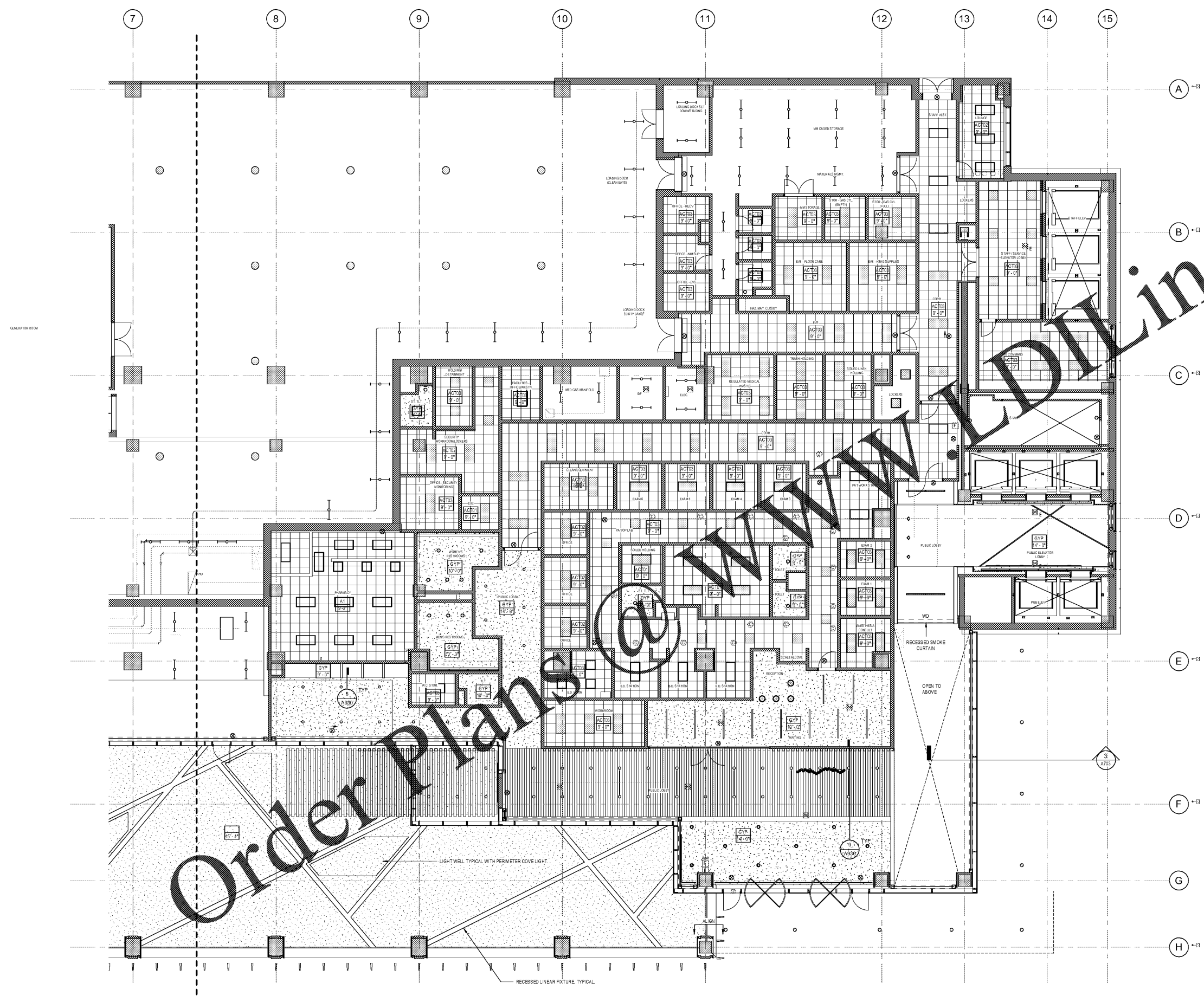
No.	Description	Date
1	ED - GMP	2019.07.03

Project No: 18.16013.00
 Sheet Title

**GROUND REFLECTED
 CEILING PLAN - EAST**

Original is 30 x 42. Do not scale contents of this drawing
 Sheet Number

A300B



REFLECTED CEILING PLAN - GROUND LEVEL - EAST
1
 1/8" = 1'-0"