

GENERAL PLAN NOTES

- 1. REVIEW LIFE SAFETY SHEETS FOR FIRE AND SMOKE BARRIER WALL DESIGNATIONS.
- 2. SMOKE COMPARTMENT WALLS TO BE MAINTAINED. PHASE ADJACENT FURRING WALLS TO MAINTAIN ADEQUATE SEPARATION REQUIREMENTS. SEE LIFE SAFETY.
- 3. WALLS AT LEVELS 0, 4, 5, & 9 TO BE TYPE A0, UNLESS NOTED OTHERWISE. FURRING WALLS AT LEVELS 4, 5, & 9 TO BE TYPE F0, UNLESS NOTED OTHERWISE.
- 4. WALLS AT LEVELS 1, 2, 3, 6, 7, 8 TO BE TYPE A3, UNLESS NOTED OTHERWISE.
- 5. WALL PRIORITY DIAGRAM LOCATED ON INTERIOR PARTITIONS SHEETS. FIRE, SMOKE, AND ACOUSTICAL RATED WALLS TAKE PRECEDENT OVER NON-RATED WALLS. MAINTAIN INTEGRITY OF RATINGS.
- 6. WALLS CARRYING STC RATINGS TO BE MAINTAINED ENTIRE LENGTH OF WALL. SEE PARTITION SCHEDULE FOR MINIMUM STC RATINGS. ASSIGNED VALUES INDICATED ON A100 SERIES DIAGRAMS.
- 7. FACETED WALLS AT PUBLIC WAITING AREAS TO RECEIVE 5 WALL.
- 8. MAINTAIN LEAD LINING PARTITION AROUND THE PERIMETER OF ROOM, DOORS, & WINDOWS.
- 9. PTS - PNEUMATIC TUBE SYSTEM NOTES. SEE PLANS. PTS - PNEUMATIC TUBE STATION - CALLED OUT. PTSF - PNEUMATIC TUBE STATION WITH OVERHEAD CONNECTIONS ESTABLISHED.



Project
**THE CENTER FOR
 ADVANCED SURGICAL
 SERVICES (CASS)**
 80 GILMER STREET SE
 ATLANTA, GA 30303

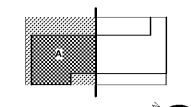
Prepared For
GRADY HEALTH SYSTEM
 80 JESSE HILL DR. SE
 ATLANTA, GA 30303



Hok, Inc. & K&S, Inc.
 133 Peachtree Street, NE, Suite 4800
 Atlanta, GA 30303 USA
 T+1 404 439 9000 F+1 404 439 9001

All reproduction & intellectual property rights reserved ©
 2019
 in Association with

Key Plan



Professional Seal

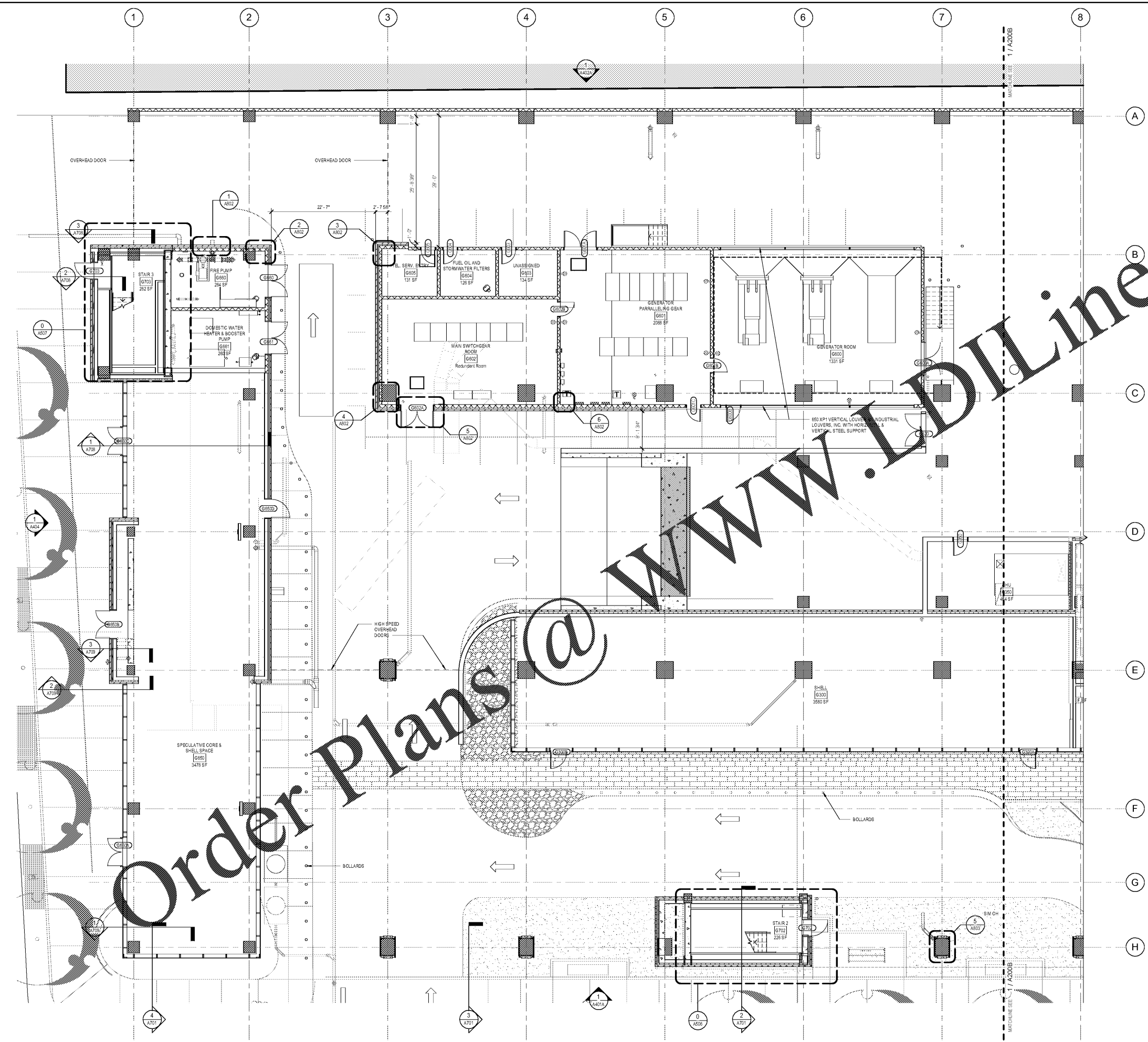
**NOT FOR
 CONSTRUCTION**

No.	Description	Date
1	ED - GMP	2019.07.03

Project No: 18.16013.00
 Sheet Title
**GROUND FLOOR PLAN
 - WEST**

Original is 20 x 42. Do not scale contents of this drawing.
 Sheet Number

A200A



1 FLOOR PLAN - GROUND LEVEL - WEST
 1/8" = 1'-0"

2019-07-03 4:36:30 PM

Order Plans @ www.IDIline.com