

GENERAL NOTES

1. ALL SPACES TO RECEIVE PRECAST CONCRETE WHEELS STOPS.
2. STRUCTURAL SLAB SLOPES TO DRAIN.
3. MAXIMUM 2% SLOPE ALLOWABLE TO MAINTAIN ACCESSIBILITY.
4. PROVIDE ALL TYPICAL FINISH MARKINGS, INCLUDING HATCHED AREAS INDICATING ACCESSIBLE ROUTE FROM ADA SPACES TO ENTRANCE LOBBY.
5. PROVIDE BOLLARDS AS REQUIRED TO PROTECT GLAZING, ACCESSIBLE ROUTE AND STAIRS.
6. VEHICULAR BARRIERS ARE REQUIRED AT BUILDING PERIMETER AND STOREFRONT ENTRANCE LOBBIES.



Project
**THE CENTER FOR
 ADVANCED SURGICAL
 SERVICES (CASS)**
 80 GILMER STREET SE
 ATLANTA, GA 30303

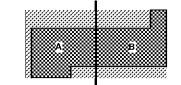
Prepared For
GRADY HEALTH SYSTEM
 80 JESSE HILL DR. SE
 ATLANTA, GA 30303



Helmut Obata & Kastbaum, Inc.
 133 Peachtree Street, NE, Suite 4800
 Atlanta, GA 30303 USA
 T+1 404 439 9000 F+1 404 439 9001

All reproduction & intellectual property rights reserved © 2019
 in Association with

Key Plan



Professional Seal



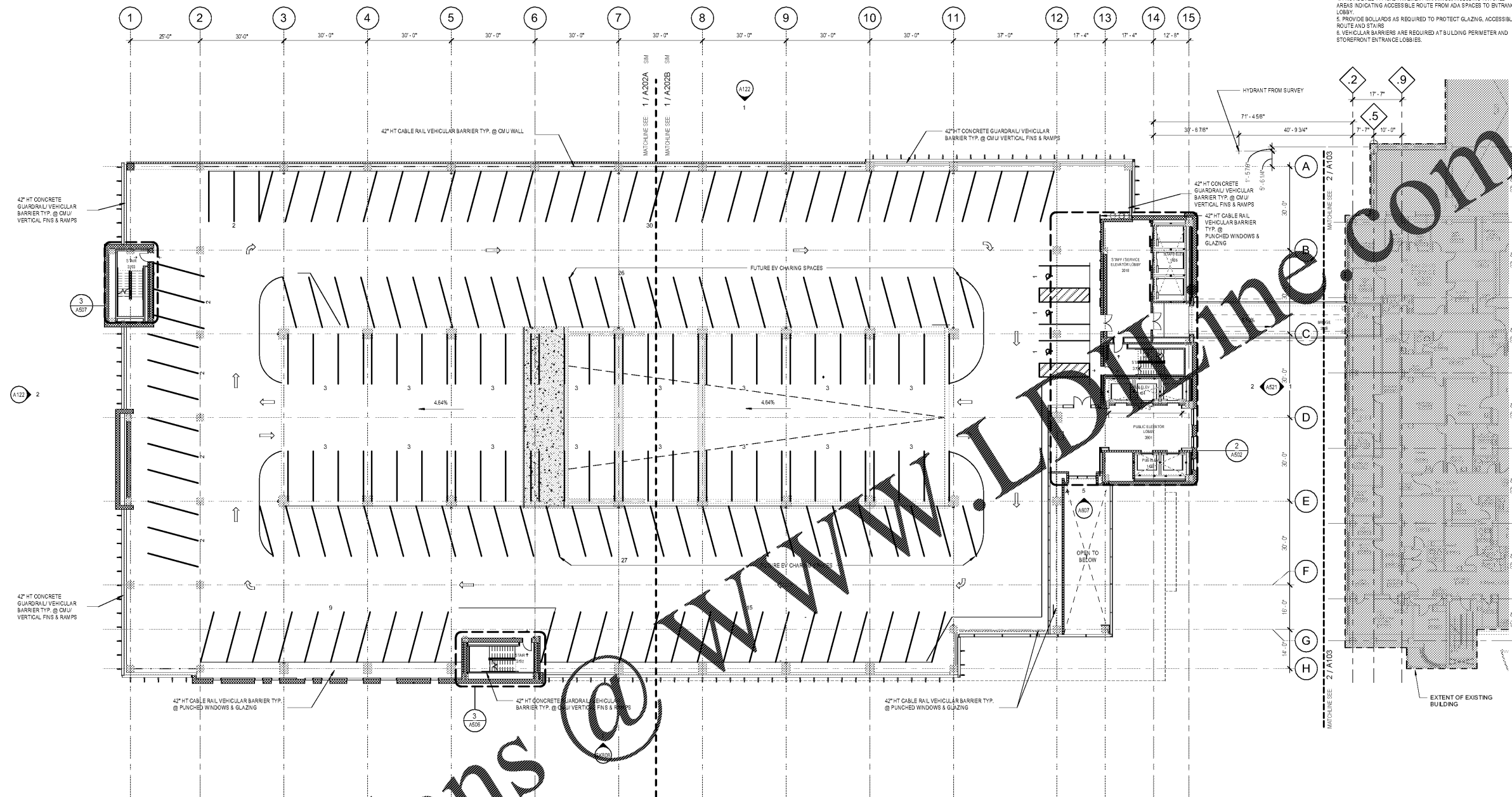
ISSUED FOR CONSTRUCTION

No.	Description	Date
1	ED - GMP	2019-07-03

Project No: 18.16013.00
 Sheet Title

**COMPOSITE PLAN -
 LEVEL 3**

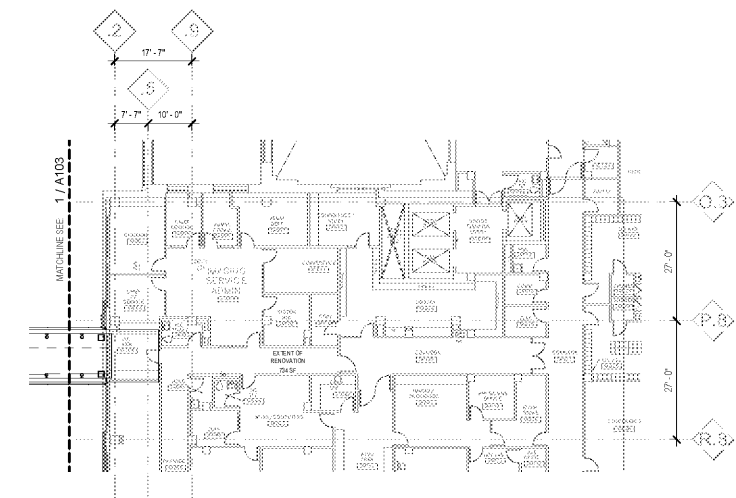
Original is 30 x 42. Do not scale contents of this drawing.
 Sheet Number



1 COMPOSITE FLOOR PLAN - LEVEL 3
 1/16" = 1'-0"

MARKING SCHEDULE

LEVELS	9'-0"x18'-0" & 75° STANDARD SP		TOTAL
	STANDARD	CAR ACCESSIBLE	
LEVEL 1	109	3	113
LEVEL 2	162	0	162
LEVEL 3	157	0	157
LEVEL 4	0	3	3
		10	598



2 COMPOSITE FLOOR PLAN - LEVEL 3 - EXISTING
 1/16" = 1'-0"

Order Plans @

WWW.LDLINE.COM