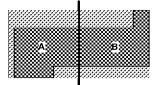




Key Plan



Professional Seal

**NOT FOR
CONSTRUCTION**

No.	Description	Date
1	ED - GMP	2019-07-03

Project No: 18.16013.00

Sheet Title

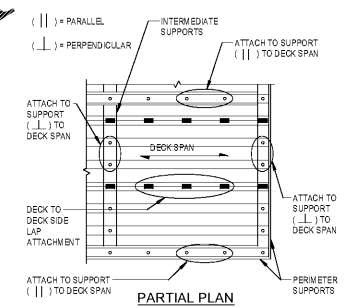
**TYPICAL STEEL DECK
DETAILS**

Original is 30 x 43. Do not scale contents of this drawing.
Sheet Number

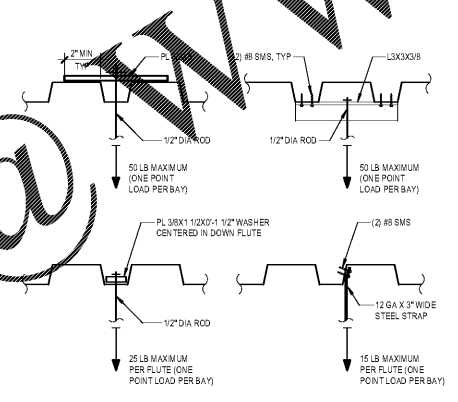
S611

STEEL DECK ATTACHMENT SCHEDULE				
ATTACHMENT PATTERN TYPE	DECK ATTACHMENT TO SUPPORT MEMBERS	DECK ATTACHMENT TO PARALLEL MEMBERS	SPACING OF SIDE LAPS	ALTERNATE MECHANICAL ATTACHMENT TO SUPPORT MEMBERS
FD1				
RD1				
RD2				
RD3				
RD4				
RD5				

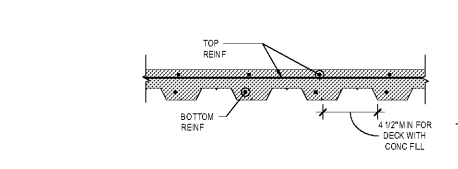
- NOTES:**
1. PW = POWER WELD, 1/2" DIAMETER OR 3/8" MINIMUM EFFECTIVE FUSION AREA.
 2. HEADED STUDS WELDED THROUGH DECK WITH PERMANENT COVER FROM EDGE OF THE DECK TO DECK CENTER LINE MAY BE SUBSTITUTED OR EXCLUDED FOR PULL-THROUGH MECHANICAL ATTACHMENT. ALIGN AND SECURE DECK IN POSITION AS REQUIRED BEFORE INSTALLING STUDS.
 3. SIDE LAP CONNECTIONS SHALL BE MANUFACTURER'S SPECIALTY LAP CONNECTION (VEROD SIDE LAP 2 CONNECTION FOR VEROD DECK, ASC DELTA GAP FOR VEROD DECKS) OR TOP BEAM WELDS, AT SPACING NOTED. BUTTON PUNCH IS NOT PERMITTED.
 4. WHERE ALTERNATE MECHANICAL ATTACHMENT IS GIVEN, MECHANICAL FASTENERS MAY BE USED AT MEMBERS WITH FLANGES OF COMPATIBLE THICKNESS, IN LIEU OF WELDS. PAF = POWER ACTUATED FASTENER. USE HILTI X-EN-PIN AT WIDE FLANGES AND SIMILAR SHAPES WITH FLANGE THICKNESS $\geq 1/4"$. USE HILTI X-HEN-24 PINS AT OPEN WEB JOIST, $1/8" \leq$ FLANGE THICKNESS $\leq 3/8"$.
 5. OMIT ATTACHMENTS WHERE DEVOTED AS PROTECTED ZONES.
 6. SEE PLANS FOR ADDITIONAL FASTENERS REQUIRED AT MEMBERS DEVOTED AS SFRES.



5 SUSPENDED LOADS FROM DECK WITH FILL
NTS



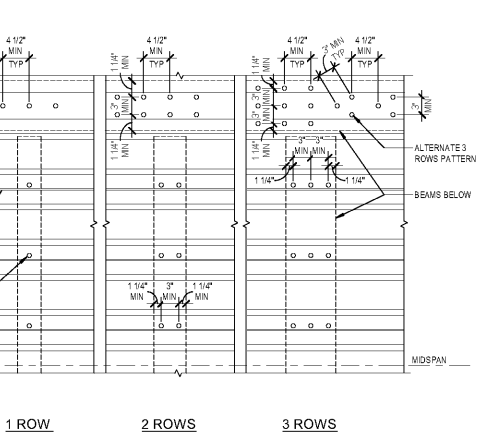
2 STEEL DECK ATTACHMENT SCHEDULE
NTS



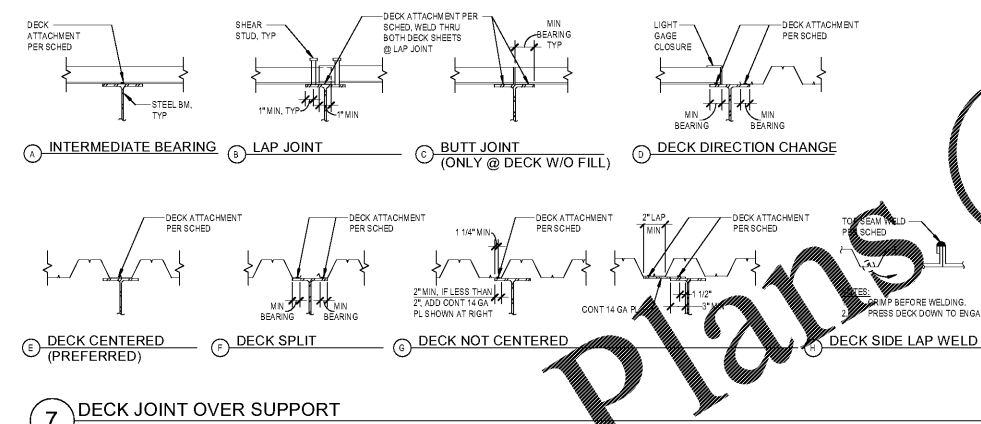
DECK TYPE	STEEL DECK ONLY		CONCRETE FILL		ATTACHMENT PATTERN (SEE NOTE 4)	REMARKS
	DECK SECTION AND GAGE	GROSS I (# FT)	CONC. AND TYPE	REINFORCEMENT (SEE NOTE 3)		
D1						
D2						
D6						
D7						

- STEEL DECK NOTES:**
1. SEE SPECIFICATIONS AND GENERAL NOTES ON SHEET S-013 FOR MATERIAL SPECIFICATIONS.
 2. SEE FRAMING PLANS FOR EXTENT OF DECK TYPES AND SPAN DIRECTION. DECK SECTIONS CORRESPOND TO VEROD MANUFACTURING CO (ICC REPORT ESR-1735 P AND APMO REPORT 2217) OR ASC STEEL DECK (APMO REPORT BS-0151 FOR NON-COMPOSITE STEEL DECK AND ICC REPORT ESR-349 FOR COMPOSITE DECK WITH CONCRETE FILL AND APMO REPORT 0326).
 3. SEE FRAMING PLANS FOR ADDITIONAL REINFORCEMENT.
 4. SEE STEEL DECK ATTACHMENT SCHEDULE FOR THE REQUIREMENTS OF EACH TYPE AND PATTERN NOTED IN DETAIL S6-421.
 5. ENDS SHALL TERMINATE OVER SUPPORTS PERPENDICULAR TO DECK SPAN EXCEPT AT OPENING AND BUILDING EDGES WHERE DECK MAY BE CANTILEVERED.
 6. WHERE POSSIBLE, PROVIDE SHEETS OF SUFFICIENT LENGTH TO CONTINUOUSLY SPAN AT LEAST THREE SPANS.
 7. WHERE DECK WITH FILL CONTINUOUSLY SPANS AT LEAST THREE SPANS, SHORING IS NOT REQUIRED DURING CONCRETE PLACEMENT. FOR OTHER CONFIGURATIONS AND CANTILEVERED EDGES, SHORE PER DECK MANUFACTURER'S RECOMMENDATIONS.
 8. DECK SHALL HAVE 2" MINIMUM BEARING ON ALL SUPPORTING MEMBERS (MEMBERS PERPENDICULAR TO DECK) UNLESS A LARGER REQUIRED BEARING IS OTHERWISE NOTED. DECKS SHALL HAVE 1 1/2" MINIMUM BEARING AT PARALLEL MEMBERS. SEE DETAILS ON SHEET S-422 FOR ADDITIONAL BEARING SUPPORT AT COLUMNS.
 9. PROVIDE BENT PLATE OR POUR STOP AT ALL INTERIOR AND EXTERIOR EDGES PER DETAILS ON SHEET S-422 UNLESS OTHERWISE NOTED. PROVIDE RIGHT GAGE CLOSURE AND JOINT COLUMNS AND VERTICAL DISCONTINUITIES AS REQUIRED FOR CONCRETE FILL INSTALLATION.
 10. CONSTRUCTION JOINTS IN CONCRETE FILL SHALL BE KEVED PER DETAIL 48-421.
 11. THE FIRST SHEET OF STEEL DECKING ADJACENT AND PARALLEL TO PERMETER BEAMS AND SFRES BEAMS SHALL BE FULL WIDTH SHEETS.
 12. TYPICAL WELDED HEADED STUD QUANTITY IS SHOWN ON FRAMING PLANS. SEE DETAIL 18 ON THIS SHEET FOR SPACING REQUIREMENTS. FOR ALL BEAMS W/12X19 AND LARGER SUPPORTING DECK AND FILL, WHERE STUD QUANTITY IS NOT SHOWN ON PLANS, PROVIDE WELDED HEADED STUDS SPACED AT 2'-0" MAXIMUM.
 13. ALL WELDED HEADED STUDS SHALL BE 3/4" DIAMETER. STUDS SHALL EXTEND A MINIMUM OF 1 1/2" ABOVE THE TOP OF THE DECK AND HAVE A MINIMUM CLEAR COVER OF 1/2" FROM TOP OF CONCRETE. SEE DETAIL 216-421.
 14. SEE ARCHITECTURAL AND MEP DRAWINGS FOR DETAILS OF SUSPENDED CEILING, SOFFITS AND UTILITIES. FOR DECK WITH CONCRETE FILL, POINT LOADS SHALL NOT EXCEED LOADS SHOWN ON DETAIL 136-421 AND LOADS SHALL BE SPACED SUCH THAT THE LOAD PER TRIBUTARY AREA DOES NOT EXCEED ALLOWANCES SHOWN ON LOADING PLANS. FOR BARE DECK, POINT LOADS SHALL NOT EXCEED 50 LB PER HANGER PER DETAIL 126-421 AND LOADS SHALL BE SPACED SUCH THAT THE LOAD PER TRIBUTARY AREA DOES NOT EXCEED ALLOWANCES SHOWN ON LOADING PLANS. FOR LARGER POINT LOADS, PROVIDE ADDITIONAL STRUTS OR SUPPORTS TO SUSPEND FROM FRAMING MEMBERS.
 15. DO NOT EMBED CONDUITS OR PIPES IN ANY CONCRETE FILL OVER STEEL DECK.
 16. OPENINGS THROUGH DECK SHOWN ON FRAMING PLANS ARE NOT COMPLETE AS TO NUMBER, SIZE AND LOCATION. FOR COMPLETE INFORMATION, SEE ARCHITECTURAL AND MEP DRAWINGS.
 17. SEE DETAILS ON SHEET S-423 FOR REQUIRED STRENGTHENING AT TYPICAL OPENINGS. PROVIDE STRENGTHENING BEFORE CUTTING OPENINGS. FOR SPECIAL CONDITIONS, SUBMIT LAYOUT OF OPENINGS AND PROPOSED STRENGTHENING FOR REVIEW AND APPROVAL BY ARCHITECT AND STRUCTURAL ENGINEER.

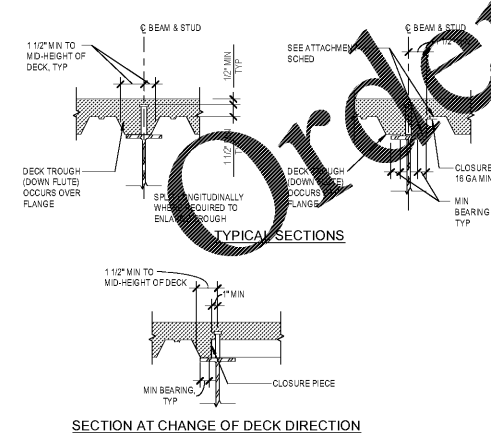
4 SUSPENDED LOADS FROM DECK WITHOUT FILL
3/4" x 1'-0"



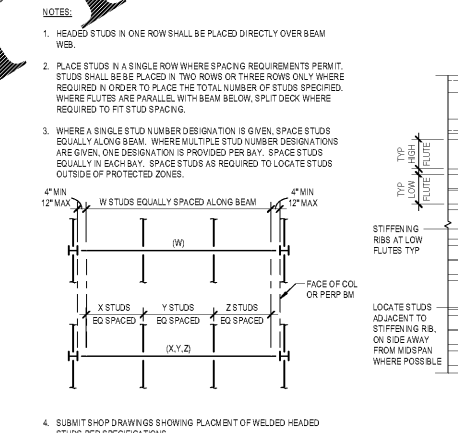
1 STEEL DECK SCHEDULE AND NOTES
NTS



7 DECK JOINT OVER SUPPORT
NTS



6 SHEAR STUD PLACEMENT
NTS



3 WELDED HEADED STUD MINIMUM SPACING
NTS

NOTES:

1. HEADED STUDS IN ONE ROW SHALL BE PLACED DIRECTLY OVER BEAM WEB.
2. PLACE STUDS IN A SINGLE ROW WHERE SPACING REQUIREMENTS PERMIT. STUDS SHALL BE PLACED IN TWO ROWS OR THREE ROWS ONLY WHERE REQUIRED IN ORDER TO PLACE THE TOTAL NUMBER OF STUDS SPECIFIED. WHERE FLUTES ARE PARALLEL WITH BEAM BELOW, SPILT DECK WHERE REQUIRED TO FIT STUD SPACING.
3. WHERE A SINGLE STUD NUMBER DESIGNATION IS GIVEN, SPACE STUDS EQUALLY ALONG BEAM. WHERE MULTIPLE STUD NUMBER DESIGNATIONS ARE GIVEN, ONE DESIGNATION IS PROVIDED PER BAY. SPACE STUDS EQUALLY IN EACH BAY. SPACE STUDS AS REQUIRED TO LOCATE STUDS OUTSIDE OF PROTECTED ZONES.
4. SUBMIT SHOP DRAWINGS SHOWING ALIGNMENT OF WELDED HEADED STUDS PER SPECIFICATIONS.

NOTES:

1. WHERE LOADS EXCEED VALUES LISTED ABOVE, PROVIDE ANCHORAGE ARRANGEMENT TO ARCHITECT FOR REVIEW.

NOTES:

1. PW = POWER WELD, 1/2" DIAMETER OR 3/8" MINIMUM EFFECTIVE FUSION AREA.
2. HEADED STUDS WELDED THROUGH DECK WITH PERMANENT COVER FROM EDGE OF THE DECK TO DECK CENTER LINE MAY BE SUBSTITUTED OR EXCLUDED FOR PULL-THROUGH MECHANICAL ATTACHMENT. ALIGN AND SECURE DECK IN POSITION AS REQUIRED BEFORE INSTALLING STUDS.
3. SIDE LAP CONNECTIONS SHALL BE MANUFACTURER'S SPECIALTY LAP CONNECTION (VEROD SIDE LAP 2 CONNECTION FOR VEROD DECK, ASC DELTA GAP FOR VEROD DECKS) OR TOP BEAM WELDS, AT SPACING NOTED. BUTTON PUNCH IS NOT PERMITTED.
4. WHERE ALTERNATE MECHANICAL ATTACHMENT IS GIVEN, MECHANICAL FASTENERS MAY BE USED AT MEMBERS WITH FLANGES OF COMPATIBLE THICKNESS, IN LIEU OF WELDS. PAF = POWER ACTUATED FASTENER. USE HILTI X-EN-PIN AT WIDE FLANGES AND SIMILAR SHAPES WITH FLANGE THICKNESS $\geq 1/4"$. USE HILTI X-HEN-24 PINS AT OPEN WEB JOIST, $1/8" \leq$ FLANGE THICKNESS $\leq 3/8"$.
5. OMIT ATTACHMENTS WHERE DEVOTED AS PROTECTED ZONES.
6. SEE PLANS FOR ADDITIONAL FASTENERS REQUIRED AT MEMBERS DEVOTED AS SFRES.

NOTES:

1. 1 1/2" MIN TO MID-HEIGHT OF DECK, TYP.
2. 1 1/4" MIN. TYP.
3. 2" MIN. IF LESS THAN 2", ADD CONT. 14 GA. PL. SHOWN AT RIGHT.
4. 2" LAP.
5. 1/2" DIA. ROD.
6. 1/2" DIA. ROD.
7. 50 LB MAXIMUM (ONE POINT LOAD PER BAY).
8. 50 LB MAXIMUM (ONE POINT LOAD PER BAY).
9. 50 LB MAXIMUM (ONE POINT LOAD PER BAY).
10. 12 GA. X 3" WIDE STEEL STRAP.
11. 15 LB MAXIMUM PER FLUTE (ONE POINT LOAD PER BAY).
12. 15 LB MAXIMUM PER FLUTE (ONE POINT LOAD PER BAY).
13. 25 LB MAXIMUM PER FLUTE (ONE POINT LOAD PER BAY).
14. 25 LB MAXIMUM PER FLUTE (ONE POINT LOAD PER BAY).
15. 25 LB MAXIMUM PER FLUTE (ONE POINT LOAD PER BAY).
16. 25 LB MAXIMUM PER FLUTE (ONE POINT LOAD PER BAY).
17. 25 LB MAXIMUM PER FLUTE (ONE POINT LOAD PER BAY).
18. 25 LB MAXIMUM PER FLUTE (ONE POINT LOAD PER BAY).
19. 25 LB MAXIMUM PER FLUTE (ONE POINT LOAD PER BAY).
20. 25 LB MAXIMUM PER FLUTE (ONE POINT LOAD PER BAY).
21. 25 LB MAXIMUM PER FLUTE (ONE POINT LOAD PER BAY).
22. 25 LB MAXIMUM PER FLUTE (ONE POINT LOAD PER BAY).
23. 25 LB MAXIMUM PER FLUTE (ONE POINT LOAD PER BAY).
24. 25 LB MAXIMUM PER FLUTE (ONE POINT LOAD PER BAY).
25. 25 LB MAXIMUM PER FLUTE (ONE POINT LOAD PER BAY).
26. 25 LB MAXIMUM PER FLUTE (ONE POINT LOAD PER BAY).
27. 25 LB MAXIMUM PER FLUTE (ONE POINT LOAD PER BAY).
28. 25 LB MAXIMUM PER FLUTE (ONE POINT LOAD PER BAY).
29. 25 LB MAXIMUM PER FLUTE (ONE POINT LOAD PER BAY).
30. 25 LB MAXIMUM PER FLUTE (ONE POINT LOAD PER BAY).
31. 25 LB MAXIMUM PER FLUTE (ONE POINT LOAD PER BAY).
32. 25 LB MAXIMUM PER FLUTE (ONE POINT LOAD PER BAY).
33. 25 LB MAXIMUM PER FLUTE (ONE POINT LOAD PER BAY).
34. 25 LB MAXIMUM PER FLUTE (ONE POINT LOAD PER BAY).
35. 25 LB MAXIMUM PER FLUTE (ONE POINT LOAD PER BAY).
36. 25 LB MAXIMUM PER FLUTE (ONE POINT LOAD PER BAY).
37. 25 LB MAXIMUM PER FLUTE (ONE POINT LOAD PER BAY).
38. 25 LB MAXIMUM PER FLUTE (ONE POINT LOAD PER BAY).
39. 25 LB MAXIMUM PER FLUTE (ONE POINT LOAD PER BAY).
40. 25 LB MAXIMUM PER FLUTE (ONE POINT LOAD PER BAY).
41. 25 LB MAXIMUM PER FLUTE (ONE POINT LOAD PER BAY).
42. 25 LB MAXIMUM PER FLUTE (ONE POINT LOAD PER BAY).
43. 25 LB MAXIMUM PER FLUTE (ONE POINT LOAD PER BAY).
44. 25 LB MAXIMUM PER FLUTE (ONE POINT LOAD PER BAY).
45. 25 LB MAXIMUM PER FLUTE (ONE POINT LOAD PER BAY).
46. 25 LB MAXIMUM PER FLUTE (ONE POINT LOAD PER BAY).
47. 25 LB MAXIMUM PER FLUTE (ONE POINT LOAD PER BAY).
48. 25 LB MAXIMUM PER FLUTE (ONE POINT LOAD PER BAY).
49. 25 LB MAXIMUM PER FLUTE (ONE POINT LOAD PER BAY).
50. 25 LB MAXIMUM PER FLUTE (ONE POINT LOAD PER BAY).
51. 25 LB MAXIMUM PER FLUTE (ONE POINT LOAD PER BAY).
52. 25 LB MAXIMUM PER FLUTE (ONE POINT LOAD PER BAY).
53. 25 LB MAXIMUM PER FLUTE (ONE POINT LOAD PER BAY).
54. 25 LB MAXIMUM PER FLUTE (ONE POINT LOAD PER BAY).
55. 25 LB MAXIMUM PER FLUTE (ONE POINT LOAD PER BAY).
56. 25 LB MAXIMUM PER FLUTE (ONE POINT LOAD PER BAY).
57. 25 LB MAXIMUM PER FLUTE (ONE POINT LOAD PER BAY).
58. 25 LB MAXIMUM PER FLUTE (ONE POINT LOAD PER BAY).
59. 25 LB MAXIMUM PER FLUTE (ONE POINT LOAD PER BAY).
60. 25 LB MAXIMUM PER FLUTE (ONE POINT LOAD PER BAY).
61. 25 LB MAXIMUM PER FLUTE (ONE POINT LOAD PER BAY).
62. 25 LB MAXIMUM PER FLUTE (ONE POINT LOAD PER BAY).
63. 25 LB MAXIMUM PER FLUTE (ONE POINT LOAD PER BAY).
64. 25 LB MAXIMUM PER FLUTE (ONE POINT LOAD PER BAY).
65. 25 LB MAXIMUM PER FLUTE (ONE POINT LOAD PER BAY).
66. 25 LB MAXIMUM PER FLUTE (ONE POINT LOAD PER BAY).
67. 25 LB MAXIMUM PER FLUTE (ONE POINT LOAD PER BAY).
68. 25 LB MAXIMUM PER FLUTE (ONE POINT LOAD PER BAY).
69. 25 LB MAXIMUM PER FLUTE (ONE POINT LOAD PER BAY).
70. 25 LB MAXIMUM PER FLUTE (ONE POINT LOAD PER BAY).
71. 25 LB MAXIMUM PER FLUTE (ONE POINT LOAD PER BAY).
72. 25 LB MAXIMUM PER FLUTE (ONE POINT LOAD PER BAY).
73. 25 LB MAXIMUM PER FLUTE (ONE POINT LOAD PER BAY).
74. 25 LB MAXIMUM PER FLUTE (ONE POINT LOAD PER BAY).
75. 25 LB MAXIMUM PER FLUTE (ONE POINT LOAD PER BAY).
76. 25 LB MAXIMUM PER FLUTE (ONE POINT LOAD PER BAY).
77. 25 LB MAXIMUM PER FLUTE (ONE POINT LOAD PER BAY).
78. 25 LB MAXIMUM PER FLUTE (ONE POINT LOAD PER BAY).
79. 25 LB MAXIMUM PER FLUTE (ONE POINT LOAD PER BAY).
80. 25 LB MAXIMUM PER FLUTE (ONE POINT LOAD PER BAY).
81. 25 LB MAXIMUM PER FLUTE (ONE POINT LOAD PER BAY).
82. 25 LB MAXIMUM PER FLUTE (ONE POINT LOAD PER BAY).
83. 25 LB MAXIMUM PER FLUTE (ONE POINT LOAD PER BAY).
84. 25 LB MAXIMUM PER FLUTE (ONE POINT LOAD PER BAY).
85. 25 LB MAXIMUM PER FLUTE (ONE POINT LOAD PER BAY).
86. 25 LB MAXIMUM PER FLUTE (ONE POINT LOAD PER BAY).
87. 25 LB MAXIMUM PER FLUTE (ONE POINT LOAD PER BAY).
88. 25 LB MAXIMUM PER FLUTE (ONE POINT LOAD PER BAY).
89. 25 LB MAXIMUM PER FLUTE (ONE POINT LOAD PER BAY).
90. 25 LB MAXIMUM PER FLUTE (ONE POINT LOAD PER BAY).
91. 25 LB MAXIMUM PER FLUTE (ONE POINT LOAD PER BAY).
92. 25 LB MAXIMUM PER FLUTE (ONE POINT LOAD PER BAY).
93. 25 LB MAXIMUM PER FLUTE (ONE POINT LOAD PER BAY).
94. 25 LB MAXIMUM PER FLUTE (ONE POINT LOAD PER BAY).
95. 25 LB MAXIMUM PER FLUTE (ONE POINT LOAD PER BAY).
96. 25 LB MAXIMUM PER FLUTE (ONE POINT LOAD PER BAY).
97. 25 LB MAXIMUM PER FLUTE (ONE POINT LOAD PER BAY).
98. 25 LB MAXIMUM PER FLUTE (ONE POINT LOAD PER BAY).
99. 25 LB MAXIMUM PER FLUTE (ONE POINT LOAD PER BAY).
100. 25 LB MAXIMUM PER FLUTE (ONE POINT LOAD PER BAY).

NOTES:

1. 1 1/2" MIN TO MID-HEIGHT OF DECK, TYP.
2. 1 1/4" MIN. TYP.
3. 2" MIN. IF LESS THAN 2", ADD CONT. 14 GA. PL. SHOWN AT RIGHT.
4. 2" LAP.
5. 1/2" DIA. ROD.
6. 1/2" DIA. ROD.
7. 50 LB MAXIMUM (ONE POINT LOAD PER BAY).
8. 50 LB MAXIMUM (ONE POINT LOAD PER BAY).
9. 50 LB MAXIMUM (ONE POINT LOAD PER BAY).
10. 12 GA. X 3" WIDE STEEL STRAP.
11. 15 LB MAXIMUM PER FLUTE (ONE POINT LOAD PER BAY).
12. 15 LB MAXIMUM PER FLUTE (ONE POINT LOAD PER BAY).
13. 25 LB MAXIMUM PER FLUTE (ONE POINT LOAD PER BAY).
14. 25 LB MAXIMUM PER FLUTE (ONE POINT LOAD PER BAY).
15. 25 LB MAXIMUM PER FLUTE (ONE POINT LOAD PER BAY).
16. 25 LB MAXIMUM PER FLUTE (ONE POINT LOAD PER BAY).
17. 25 LB MAXIMUM PER FLUTE (ONE POINT LOAD PER BAY).
18. 25 LB MAXIMUM PER FLUTE (ONE POINT LOAD PER BAY).
19. 25 LB MAXIMUM PER FLUTE (ONE POINT LOAD PER BAY).
20. 25 LB MAXIMUM PER FLUTE (ONE POINT LOAD PER BAY).
21. 25 LB MAXIMUM PER FLUTE (ONE POINT LOAD PER BAY).
22. 25 LB MAXIMUM PER FLUTE (ONE POINT LOAD PER BAY).
23. 25 LB MAXIMUM PER FLUTE (ONE POINT LOAD PER BAY).
24. 25 LB MAXIMUM PER FLUTE (ONE POINT LOAD PER BAY).
25. 25 LB MAXIMUM PER FLUTE (ONE POINT LOAD PER BAY).
26. 25 LB MAXIMUM PER FLUTE (ONE POINT LOAD PER BAY).
27. 25 LB MAXIMUM PER FLUTE (ONE POINT LOAD PER BAY).
28. 25 LB MAXIMUM PER FLUTE (ONE POINT LOAD PER BAY).
29. 25 LB MAXIMUM PER FLUTE (ONE POINT LOAD PER BAY).
30. 25 LB MAXIMUM PER FLUTE (ONE POINT LOAD PER BAY).
31. 25 LB MAXIMUM PER FLUTE (ONE POINT LOAD PER BAY).
32. 25 LB MAXIMUM PER FLUTE (ONE POINT LOAD PER BAY).
33. 25 LB MAXIMUM PER FLUTE (ONE POINT LOAD PER BAY).
34. 25 LB MAXIMUM PER FLUTE (ONE POINT LOAD PER BAY).
35. 25 LB MAXIMUM PER FLUTE (ONE POINT LOAD PER BAY).
36. 25 LB MAXIMUM PER FLUTE (ONE POINT LOAD PER BAY).
37. 25 LB MAXIMUM PER FLUTE (ONE POINT LOAD PER BAY).
38. 25 LB MAXIMUM PER FLUTE (ONE POINT LOAD PER BAY).
39. 25 LB MAXIMUM PER FLUTE (ONE POINT LOAD PER BAY).
40. 25 LB MAXIMUM PER FLUTE (ONE POINT LOAD PER BAY).
41. 25 LB MAXIMUM PER FLUTE (ONE POINT LOAD PER BAY).
42. 25 LB MAXIMUM PER FLUTE (ONE POINT LOAD PER BAY).
43. 25 LB MAXIMUM PER FLUTE (ONE POINT LOAD PER BAY).
44. 25 LB MAXIMUM PER FLUTE (ONE POINT LOAD PER BAY).
45. 25 LB MAXIMUM PER FLUTE (ONE POINT LOAD PER BAY).
46. 25 LB MAXIMUM PER FLUTE (ONE POINT LOAD PER BAY).
47. 25 LB MAXIMUM PER FLUTE (ONE POINT LOAD PER BAY).
48. 25 LB MAXIMUM PER FLUTE (ONE POINT LOAD PER BAY).
49. 25 LB MAXIMUM PER FLUTE (ONE POINT LOAD PER BAY).
50. 25 LB MAXIMUM PER FLUTE (ONE POINT LOAD PER BAY).
51. 25 LB MAXIMUM PER FLUTE (ONE POINT LOAD PER BAY).
52. 25 LB MAXIMUM PER FLUTE (ONE POINT LOAD PER BAY).
53. 25 LB MAXIMUM PER FLUTE (ONE POINT LOAD PER BAY).
54. 25 LB MAXIMUM PER FLUTE (ONE POINT LOAD PER BAY).
55. 25 LB MAXIMUM PER FLUTE (ONE POINT LOAD PER BAY).
56. 25 LB MAXIMUM PER FLUTE (ONE POINT LOAD PER BAY).
57. 25 LB MAXIMUM PER FLUTE (ONE POINT LOAD PER BAY).
58. 25 LB MAXIMUM PER FLUTE (ONE POINT LOAD PER BAY).
59. 25 LB MAXIMUM PER FLUTE (ONE POINT LOAD PER BAY).
60. 25 LB MAXIMUM PER FLUTE (ONE POINT LOAD PER BAY).
61. 25 LB MAXIMUM PER FLUTE (ONE POINT LOAD PER BAY).
62. 25 LB MAXIMUM PER FLUTE (ONE POINT LOAD PER BAY).
63. 25 LB MAXIMUM PER FLUTE (ONE POINT LOAD PER BAY).
64. 25 LB MAXIMUM PER FLUTE (ONE POINT LOAD PER BAY).
65. 25 LB MAXIMUM PER FLUTE (ONE POINT LOAD PER BAY).
66. 25 LB MAXIMUM PER FLUTE (ONE POINT LOAD PER BAY).
67. 25 LB MAXIMUM PER FLUTE (ONE POINT LOAD PER BAY).
68. 25 LB MAXIMUM PER FLUTE (ONE POINT LOAD PER BAY).
69. 25 LB MAXIMUM PER FLUTE (ONE POINT LOAD PER BAY).
70. 25 LB MAXIMUM PER FLUTE (ONE POINT LOAD PER BAY).
71. 25 LB MAXIMUM PER FLUTE (ONE POINT LOAD PER BAY).
72. 25 LB MAXIMUM PER FLUTE (ONE POINT LOAD PER BAY).
73. 25 LB MAXIMUM PER FLUTE (ONE POINT LOAD PER BAY).
74. 25 LB MAXIMUM PER FLUTE (ONE POINT LOAD PER BAY).
75. 25 LB MAXIMUM PER FLUTE (ONE POINT LOAD PER BAY).
76. 25 LB MAXIMUM PER FLUTE (ONE POINT LOAD PER BAY).
77. 25 LB MAXIMUM PER FLUTE (ONE POINT LOAD PER BAY).
78. 25 LB MAXIMUM PER FLUTE (ONE POINT LOAD PER BAY).
79. 25 LB MAXIMUM PER FLUTE (ONE POINT LOAD PER BAY).
80. 25 LB MAXIMUM PER FLUTE (ONE POINT LOAD PER BAY).
81. 25 LB MAXIMUM PER FLUTE (ONE POINT LOAD PER BAY).
82. 25 LB MAXIMUM PER FLUTE (ONE POINT LOAD PER BAY).
83. 25 LB MAXIMUM PER FLUTE (ONE POINT LOAD PER BAY).
84. 25 LB MAXIMUM PER FLUTE (ONE POINT LOAD PER BAY).
85. 25 LB MAXIMUM PER FLUTE (ONE POINT LOAD PER BAY).
86. 25 LB MAXIMUM PER FLUTE (ONE POINT LOAD PER BAY).
87. 25 LB MAXIMUM PER FLUTE (ONE POINT LOAD PER BAY).
88. 25 LB MAXIMUM PER FLUTE (ONE POINT LOAD PER BAY).
89. 25 LB MAXIMUM PER FLUTE (ONE POINT LOAD PER BAY).
90. 25 LB MAXIMUM PER FLUTE (ONE POINT LOAD PER BAY).
91. 25 LB MAXIMUM PER FLUTE (ONE POINT LOAD PER BAY).
92. 25 LB MAXIMUM PER FLUTE (ONE POINT LOAD PER BAY).
93. 25 LB MAXIMUM PER FLUTE (ONE POINT LOAD PER BAY).
94. 25 LB MAXIMUM PER FLUTE (ONE POINT LOAD PER BAY).
95. 25 LB MAXIMUM PER FLUTE (ONE POINT LOAD PER BAY).
96. 25 LB MAXIMUM PER FLUTE (ONE POINT LOAD PER BAY).
97. 25 LB MAXIMUM PER FLUTE (ONE POINT LOAD PER BAY).
98. 25 LB MAXIMUM PER FLUTE (ONE POINT LOAD PER BAY).
99. 25 LB MAXIMUM PER FLUTE (ONE POINT LOAD PER BAY).
100. 25 LB MAXIMUM PER FLUTE (ONE POINT LOAD PER BAY).

NOTES:

1. 1 1/2" MIN TO MID-HEIGHT OF DECK, TYP.
2. 1 1/4" MIN. TYP.
3. 2" MIN. IF LESS THAN 2", ADD CONT. 14 GA. PL. SHOWN AT RIGHT.
4. 2" LAP.
5. 1/2" DIA. ROD.
6. 1/2" DIA. ROD.
7. 50 LB MAXIMUM (ONE POINT LOAD PER BAY).
8. 50 LB MAXIMUM (ONE POINT LOAD PER BAY).
9. 50 LB MAXIMUM (ONE POINT LOAD PER BAY).
10. 12 GA. X 3" WIDE STEEL STRAP.
11. 15 LB MAXIMUM PER FLUTE (ONE POINT LOAD PER BAY).
12. 15 LB MAXIMUM PER FLUTE (ONE POINT LOAD PER BAY).
13. 25 LB MAXIMUM PER FLUTE (ONE POINT LOAD PER BAY).
14. 25 LB MAXIMUM PER FLUTE (ONE POINT LOAD PER BAY).
15. 25 LB MAXIMUM PER FLUTE (ONE POINT LOAD PER BAY).
16. 25 LB MAXIMUM PER FLUTE (ONE POINT LOAD PER BAY).
17. 25 LB MAXIMUM PER FLUTE (ONE POINT LOAD PER BAY).
18. 25 LB MAXIMUM PER FLUTE (ONE POINT LOAD PER BAY).
19. 25 LB MAXIMUM PER FLUTE (ONE POINT LOAD PER BAY).
20. 25 LB MAXIMUM PER FLUTE (ONE POINT LOAD PER BAY).
21. 25 LB MAXIMUM PER FLUTE (ONE POINT LOAD PER BAY).
22. 25 LB MAXIMUM PER FLUTE (ONE POINT LOAD PER BAY).
23. 25 LB MAXIMUM PER FLUTE (ONE POINT LOAD PER BAY).
24. 25 LB MAXIMUM PER FLUTE (ONE POINT LOAD PER BAY).
25. 25 LB MAXIMUM PER FLUTE (ONE POINT LOAD PER BAY).
26. 25 LB MAXIMUM PER FLUTE (ONE POINT LOAD PER BAY).
27. 25 LB MAXIMUM PER FLUTE (ONE POINT LOAD PER BAY).
28. 25 LB MAXIMUM PER FLUTE (ONE POINT LOAD PER BAY).
29. 25 LB MAXIMUM PER FLUTE (ONE POINT LOAD PER BAY).
30. 25 LB MAXIMUM PER FLUTE (ONE POINT LOAD PER BAY).
31. 25 LB MAXIMUM PER FLUTE (ONE POINT LOAD PER BAY).
32. 25 LB MAXIMUM PER FLUTE (ONE POINT LOAD PER BAY).
33. 25 LB MAXIMUM PER FLUTE (ONE POINT LOAD PER BAY).
34. 25 LB MAXIMUM PER FLUTE (ONE POINT LOAD PER BAY).
35. 25 LB MAXIMUM PER FLUTE (ONE POINT LOAD PER BAY).
36. 25 LB MAXIMUM PER FLUTE (ONE POINT LOAD PER BAY).
37. 25 LB MAXIMUM PER FLUTE (ONE POINT LOAD PER BAY).
38. 25 LB MAXIMUM PER FLUTE (ONE POINT LOAD PER BAY).
39. 25 LB MAXIMUM PER FLUTE (ONE POINT LOAD PER BAY).
40. 25 LB MAXIMUM PER FLUTE (ONE POINT LOAD PER BAY).
41. 25 LB MAXIMUM PER FLUTE (ONE POINT LOAD PER BAY).
42. 25 LB MAXIMUM PER FLUTE (ONE POINT LOAD PER BAY).
43. 25 LB MAXIMUM PER FLUTE (ONE POINT LOAD PER BAY).
44. 25 LB MAXIMUM PER FLUTE (ONE POINT LOAD PER BAY).
45. 25 LB MAXIMUM PER FLUTE (ONE POINT LOAD PER BAY).
46. 25 LB MAXIMUM PER FLUTE (ONE POINT LOAD PER BAY).
47. 25 LB MAXIMUM PER FLUTE (ONE POINT LOAD PER BAY).
48. 25 LB MAXIMUM PER FLUTE (ONE POINT LOAD PER BAY).
49. 25 LB MAXIMUM PER FLUTE (ONE POINT LOAD PER BAY).
50. 25 LB MAXIMUM PER FLUTE (ONE POINT LOAD PER BAY).
51. 25 LB MAXIMUM PER FLUTE (ONE POINT LOAD PER BAY).
52. 25 LB MAXIMUM PER FLUTE (ONE POINT LOAD PER BAY).
53. 25 LB MAXIMUM PER FLUTE (ONE POINT LOAD PER BAY).
54. 25 LB MAXIMUM PER FLUTE (ONE POINT LOAD PER BAY).
55. 25 LB MAXIMUM PER FLUTE (ONE POINT LOAD PER BAY).
56. 25 LB MAXIMUM PER FLUTE (ONE POINT LOAD PER BAY).
57. 25 LB MAXIMUM PER FLUTE (ONE POINT LOAD PER BAY).
58. 25 LB MAXIMUM PER FLUTE (ONE POINT LOAD PER BAY).
59. 25 LB MAXIMUM PER FLUTE (ONE POINT LOAD PER BAY).
60. 25 LB MAXIMUM PER FLUTE (ONE POINT LOAD PER BAY).
61. 25 LB MAXIMUM PER FLUTE (ONE POINT LOAD PER BAY).
62. 25 LB MAXIMUM PER FLUTE (ONE POINT LOAD PER BAY).
63. 25 LB MAXIMUM PER FLUTE (ONE POINT LOAD PER BAY).
64. 25 LB MAXIMUM PER FLUTE (ONE POINT LOAD PER BAY).
65. 25 LB MAXIMUM PER FLUTE (ONE POINT LOAD PER BAY).
66. 25 LB MAXIMUM PER FLUTE (ONE POINT LOAD PER BAY).
67. 25 LB MAXIMUM PER FLUTE (ONE POINT LOAD PER BAY).
68. 25 LB MAXIMUM PER FLUTE (ONE POINT LOAD PER BAY).
69. 25 LB MAXIMUM PER FLUTE (ONE POINT LOAD PER BAY).
70. 25 LB MAXIMUM PER FLUTE (ONE POINT LOAD PER BAY).
71. 25 LB MAXIMUM PER FLUTE (ONE POINT LOAD PER BAY).
72. 25 LB MAXIMUM PER FLUTE (ONE POINT LOAD PER BAY).
73. 25 LB MAXIMUM PER FLUTE (ONE POINT LOAD PER BAY).
74. 25 LB MAXIMUM PER FLUTE (ONE POINT LOAD PER BAY).
75. 25 LB MAXIMUM PER FLUTE (ONE POINT LOAD PER BAY).
76. 25 LB MAXIMUM PER FLUTE (ONE POINT LOAD PER BAY).
77. 25 LB MAXIMUM PER FLUTE (ONE POINT LOAD PER BAY).
78. 25 LB MAXIMUM PER FLUTE (ONE POINT LOAD PER BAY).
79. 25 LB MAXIMUM PER FLUTE (ONE POINT LOAD PER BAY).
80. 25 LB MAXIMUM PER FLUTE (ONE POINT LOAD PER BAY).
81. 25 LB MAXIMUM PER FLUTE (ONE POINT LOAD PER BAY).
82. 25 LB MAXIMUM PER FLUTE (ONE POINT LOAD PER BAY).
83. 25 LB MAXIMUM PER FLUTE (ONE POINT LOAD PER BAY).
84. 25 LB MAXIMUM PER FLUTE (ONE POINT LOAD PER BAY).
85. 25 LB MAXIMUM PER FLUTE (ONE POINT LOAD PER BAY).
86. 25 LB MAXIMUM PER FLUTE (ONE POINT LOAD PER BAY).
87. 25 LB MAXIMUM PER FLUTE (ONE POINT LOAD PER BAY).
88. 25 LB MAXIMUM PER FLUTE (ONE POINT LOAD PER BAY).
89. 25 LB MAXIMUM PER FLUTE (ONE POINT LOAD PER BAY).
90. 25 LB MAXIMUM PER FLUTE (ONE POINT LOAD PER BAY).
91. 25 LB MAXIMUM PER FLUTE (ONE POINT LOAD PER BAY).
92. 25 LB MAXIMUM PER FLUTE (ONE POINT LOAD PER BAY).
93. 25 LB MAXIMUM PER FLUTE (ONE POINT LOAD PER BAY).
94. 25 LB MAXIMUM PER FLUTE (ONE POINT LOAD PER BAY).
95. 25 LB MAXIMUM PER FLUTE (ONE POINT LOAD PER BAY).
96. 25 LB MAXIMUM PER FLUTE (ONE POINT LOAD PER B