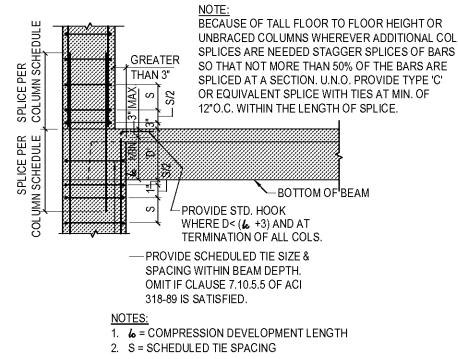
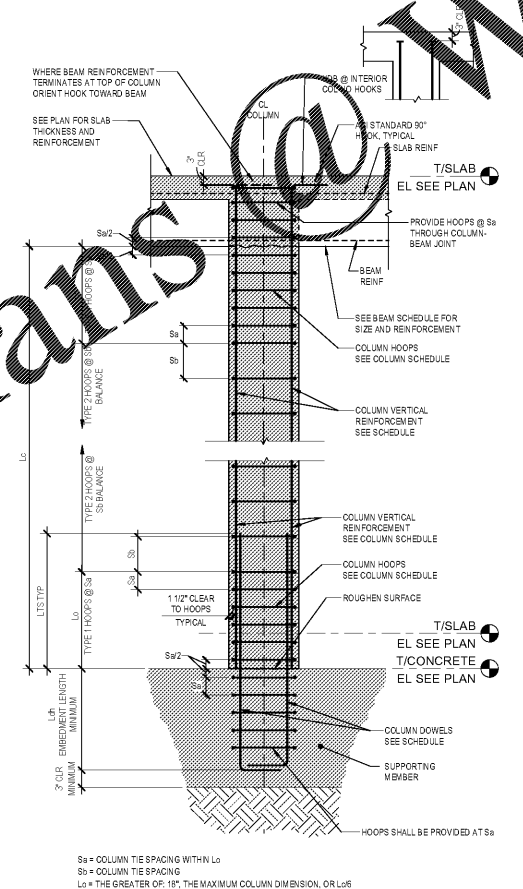
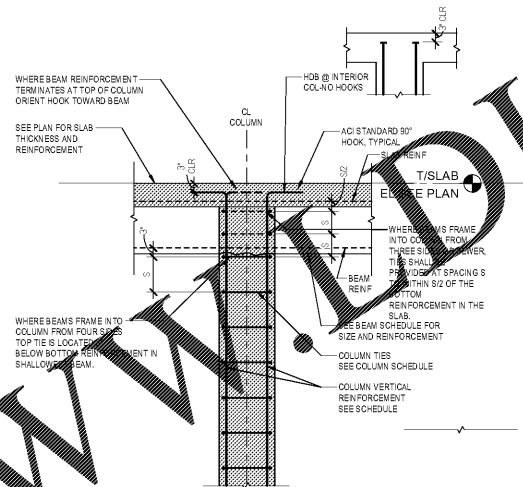


**NOT FOR
 CONSTRUCTION**

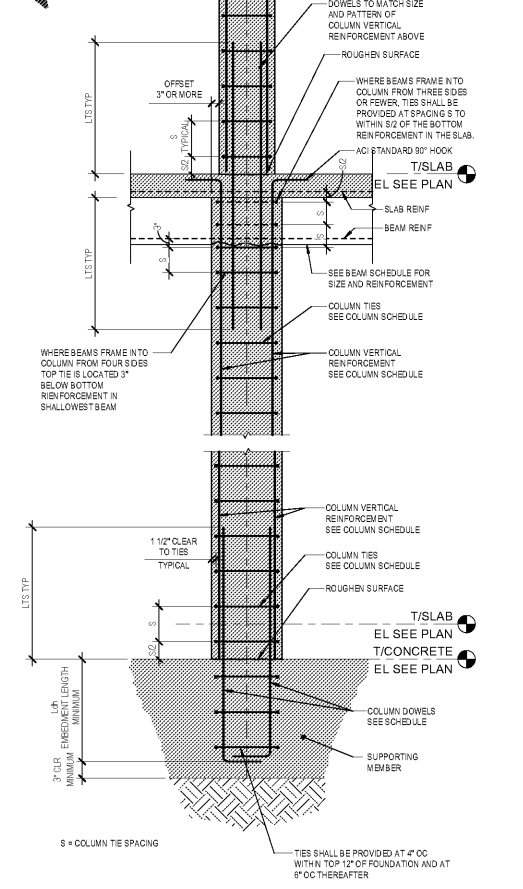
| No. | Description | Date |
|-----|-------------|------------|
| 1 | ED: GMP | 2019.07.03 |



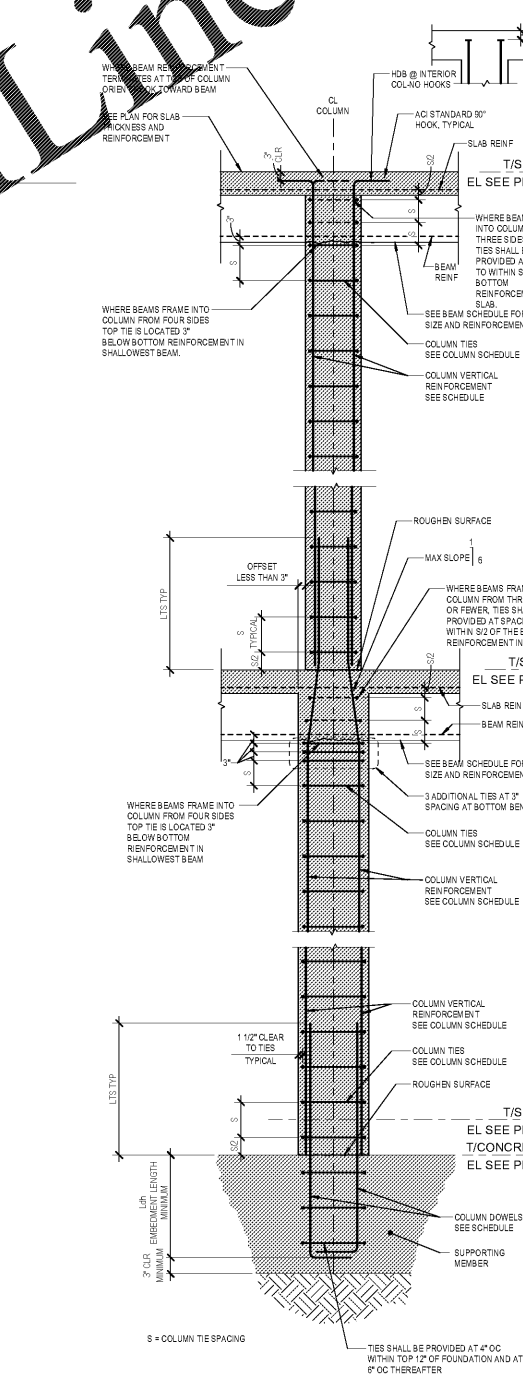
1 COLUMN SPLICE DETAIL AT DISCONTINUOUS BEAM
 N.T.S.



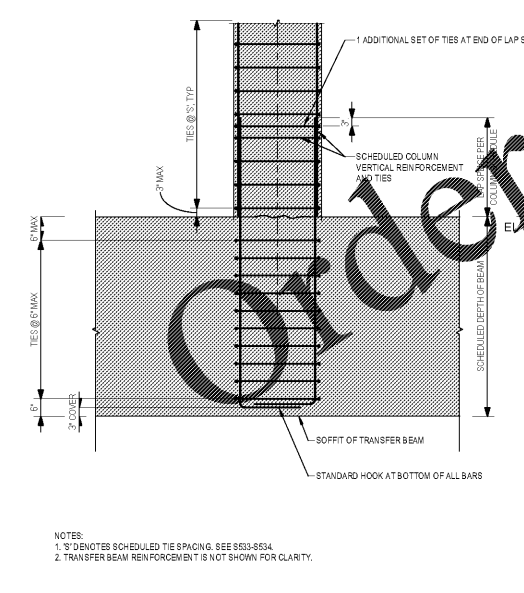
7 GRAVITY COLUMN - SINGLE STORY
 N.T.S.
 SF
 B1010.10 Floor Structural Frame
 03 30 00 Cast-in-Place Concrete



10 COLUMN WITH OFFSETS 3" OR MORE DETAIL
 N.T.S.
 SF
 B1010.10 Floor Structural Frame
 03 30 00 Cast-in-Place Concrete



11 COLUMN WITH OFFSETS LESS THAN 3" DETAIL
 N.T.S.
 SF
 B1010.10 Floor Structural Frame
 03 30 00 Cast-in-Place Concrete



2 TYPICAL COLUMN AT TRANSFER BEAM
 1/2" = 1'-0"

NOTES:
 1. 'S' DENOTES SCHEDULED TIE SPACING. SEE S533-S534.
 2. TRANSFER BEAM REINFORCEMENT IS NOT SHOWN FOR CLARITY.

Sa = COLUMN TIE SPACING WITHIN Lc
 Ss = COLUMN TIE SPACING
 Lc = THE GREATER OF: 18" THE MAXIMUM COLUMN DIMENSION, OR L6S

2 TYPICAL COLUMN AT TRANSFER BEAM
 1/2" = 1'-0"

7 GRAVITY COLUMN - SINGLE STORY
 N.T.S.
 SF
 B1010.10 Floor Structural Frame
 03 30 00 Cast-in-Place Concrete

10 COLUMN WITH OFFSETS 3" OR MORE DETAIL
 N.T.S.
 SF
 B1010.10 Floor Structural Frame
 03 30 00 Cast-in-Place Concrete

11 COLUMN WITH OFFSETS LESS THAN 3" DETAIL
 N.T.S.
 SF
 B1010.10 Floor Structural Frame
 03 30 00 Cast-in-Place Concrete

WWW.OrderPlans.com