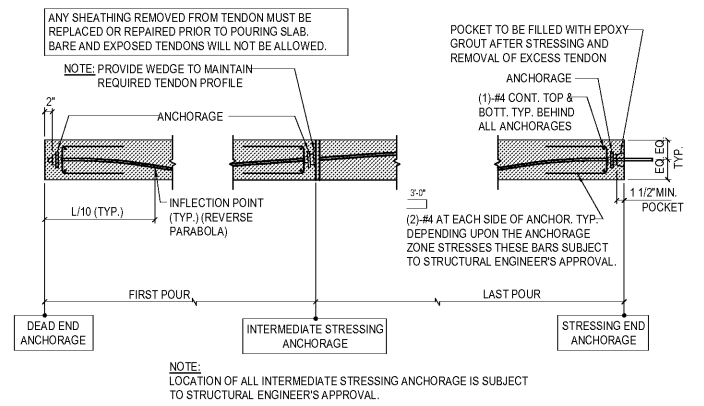
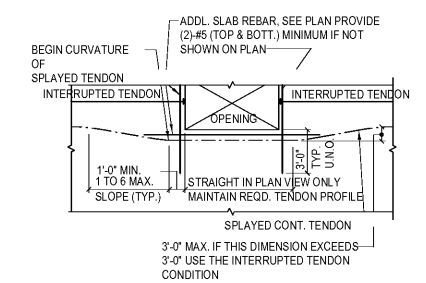


**NOT FOR
 CONSTRUCTION**

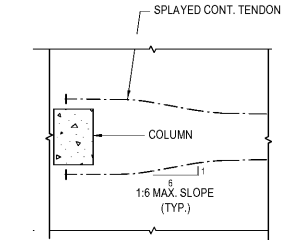
No.	Description	Date
1	ED - GMP	2019-07-03



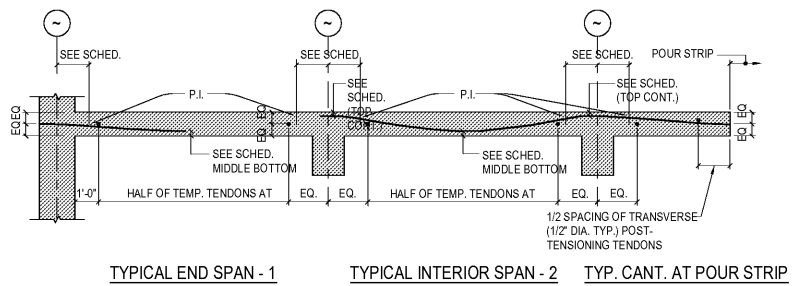
1 TYPICAL SECTION THROUGH SLAB TENDON
 N.T.S.



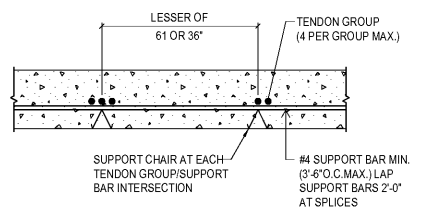
3 PLAN DETAIL SPLAYED TENDONS AROUND SLAB OPENINGS
 N.T.S.



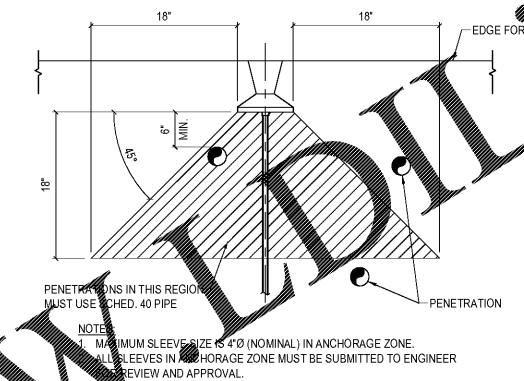
4 PLAN DETAIL SPLAYED TENDONS AROUND EXTERIOR COLUMN
 N.T.S.



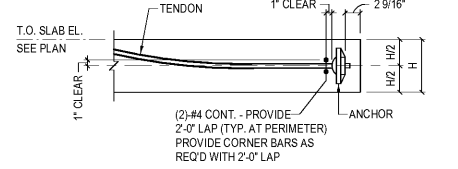
6 TYPICAL SLAB TENDON PROFILE
 N.T.S.



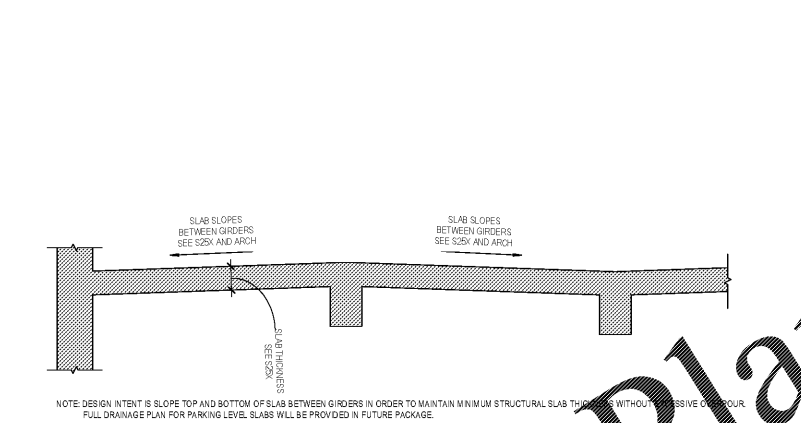
8 POST-TENSIONED SLAB TENDON SUPPORT
 N.T.S.



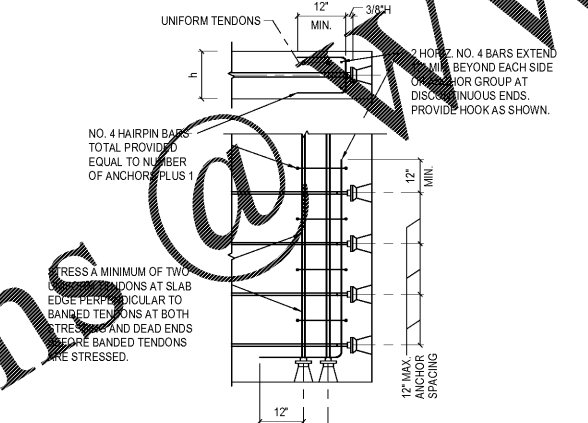
9 PENETRATIONS NEAR TENDON ANCHORAGE ZONE
 N.T.S.



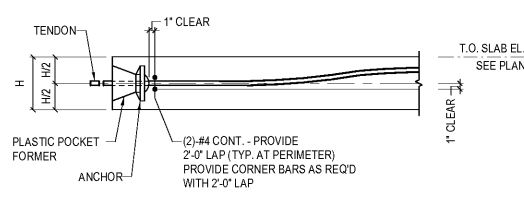
10 DEAD END ANCHOR
 N.T.S.



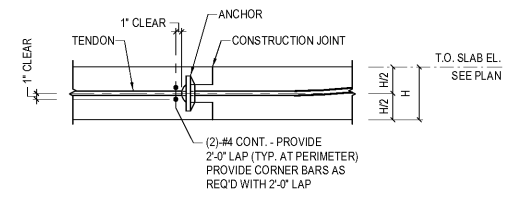
11 TYPICAL PT SLAB PROFILE FOR DRAINAGE
 N.T.S.



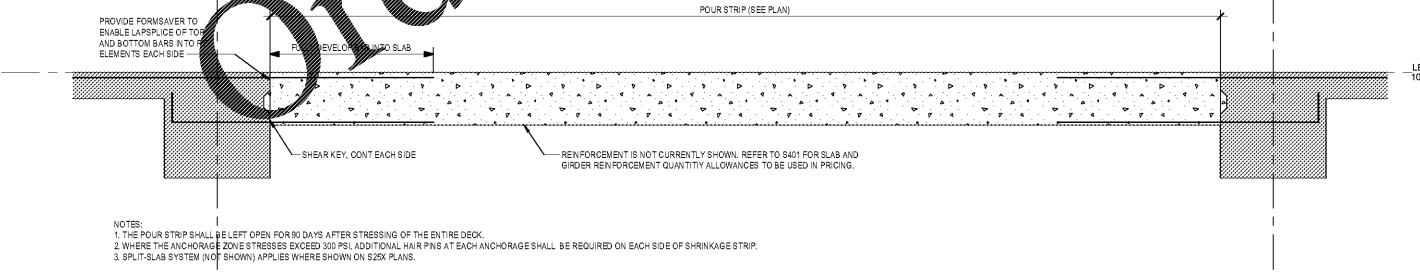
13 ANCHORAGES ZONE REINFORCEMENT FOR GROUPS OF SIX OR MORE TENDONS ANCHORAGES IN SLABS
 N.T.S.



14 STRESSING END ANCHOR
 N.T.S.



15 INTERMEDIATE ANCHOR
 N.T.S.



16 POUR STRIP AT PARKING LEVELS
 1/2" x 1'-0"

Order Plans @

- NOTES:
1. THE POUR STRIP SHALL BE LEFT OPEN FOR 90 DAYS AFTER STRESSING OF THE ENTIRE DECK.
 2. WHERE THE ANCHORAGE ZONE STRESSES EXCEED 300 PSI, ADDITIONAL HAIR PINS AT EACH ANCHORAGE SHALL BE REQUIRED ON EACH SIDE OF SHRINKAGE STRIP.
 3. SPLIT-SLAB SYSTEM (NOT SHOWN) APPLIES WHERE SHOWN ON S25X PLANS.