

Project
**THE CENTER FOR
 ADVANCED SURGICAL
 SERVICES (CASS)**
 88 JESSE HILL DRIVE
 ATLANTA, GA 30303

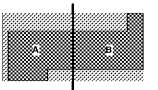
Prepared For
GRADY HEALTH SYSTEM
 80 JESSEE HILL DR. SE
 ATLANTA, GA 30303



Helmut J. Obata & Kastbaum, Inc.
 191 Peachtree Street, NE, Suite 2250
 Atlanta, GA 30303 USA
 T+1 404 439 9000 F+1 404 439 9001

All reproduction & intellectual property rights reserved ©
 2019
 In Association with

Key Plan

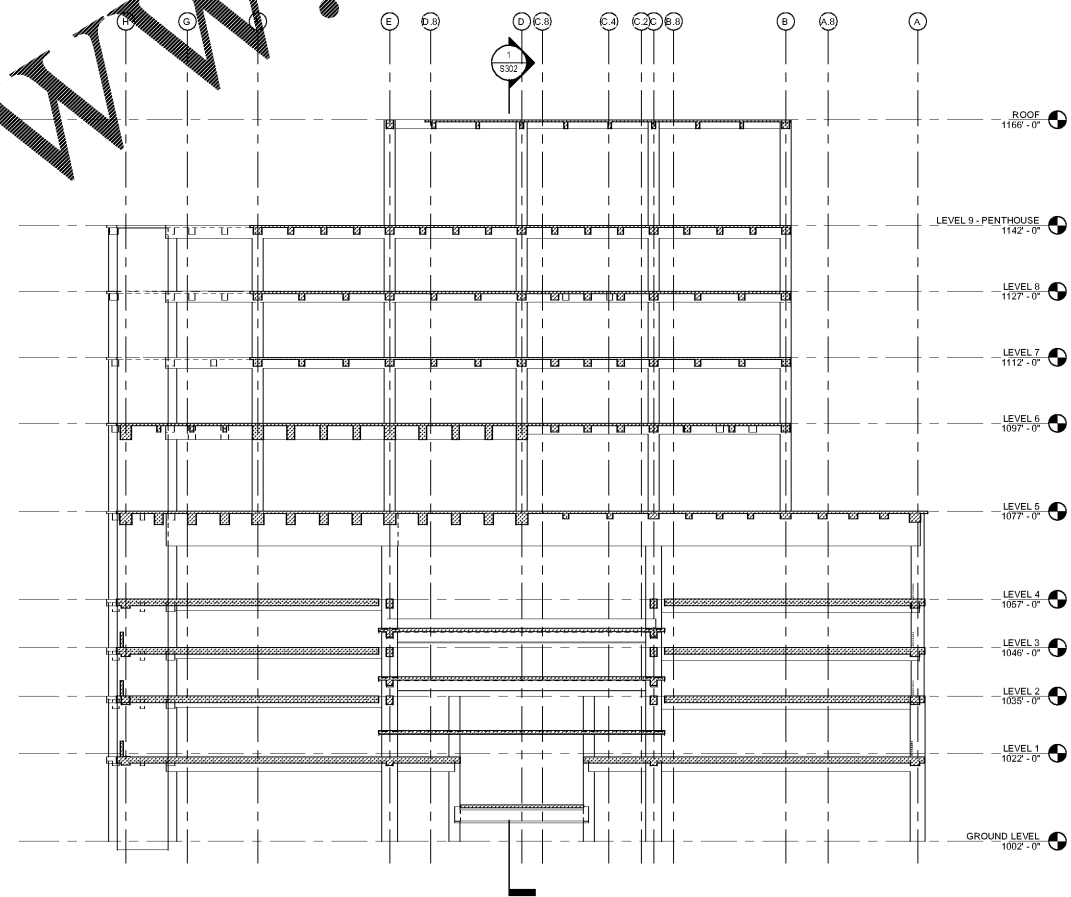


Professional Seal

**NOT FOR
 CONSTRUCTION**

| No. | Description | Date |
|-----|-------------|------------|
| 1 | ED - GMP | 2019.07.03 |

Order Plans @ WWW.LDILine.com



1 TRANSVERSE BUILDING SECTION
 1/16" = 1'-0"

BUILDING SECTION NOTES

1. FRAMING IS NOT SHOWN AT ALL LEVELS. REFER TO SHEET NOTES ON S103, S106, AND S110 FOR APPLICATION OF TYPICAL FRAMING PROVIDED.

Project No: 18.16013.00
 Sheet Title

**TRANSVERSE
 BUILDING SECTION**

Original is 30 x 42. Do not scale contents of this drawing.
 Sheet Number

S301