

Project
**THE CENTER FOR
 ADVANCED SURGICAL
 SERVICES (CASS)**
 88 JESSE HILL DRIVE
 ATLANTA, GA 30303

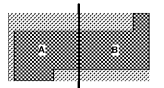
Prepared For
GRADY HEALTH SYSTEM
 80 JESSEE HILL DR. SE
 ATLANTA, GA 30303



Oates & Kastbaum, Inc.
 191 Peachtree Street, NE, Suite 2250
 Atlanta, GA 30303 USA
 T+1 404 439 9000 F+1 404 439 9001

All reproduction & intellectual property rights reserved © 2019
 In Association with

Key Plan

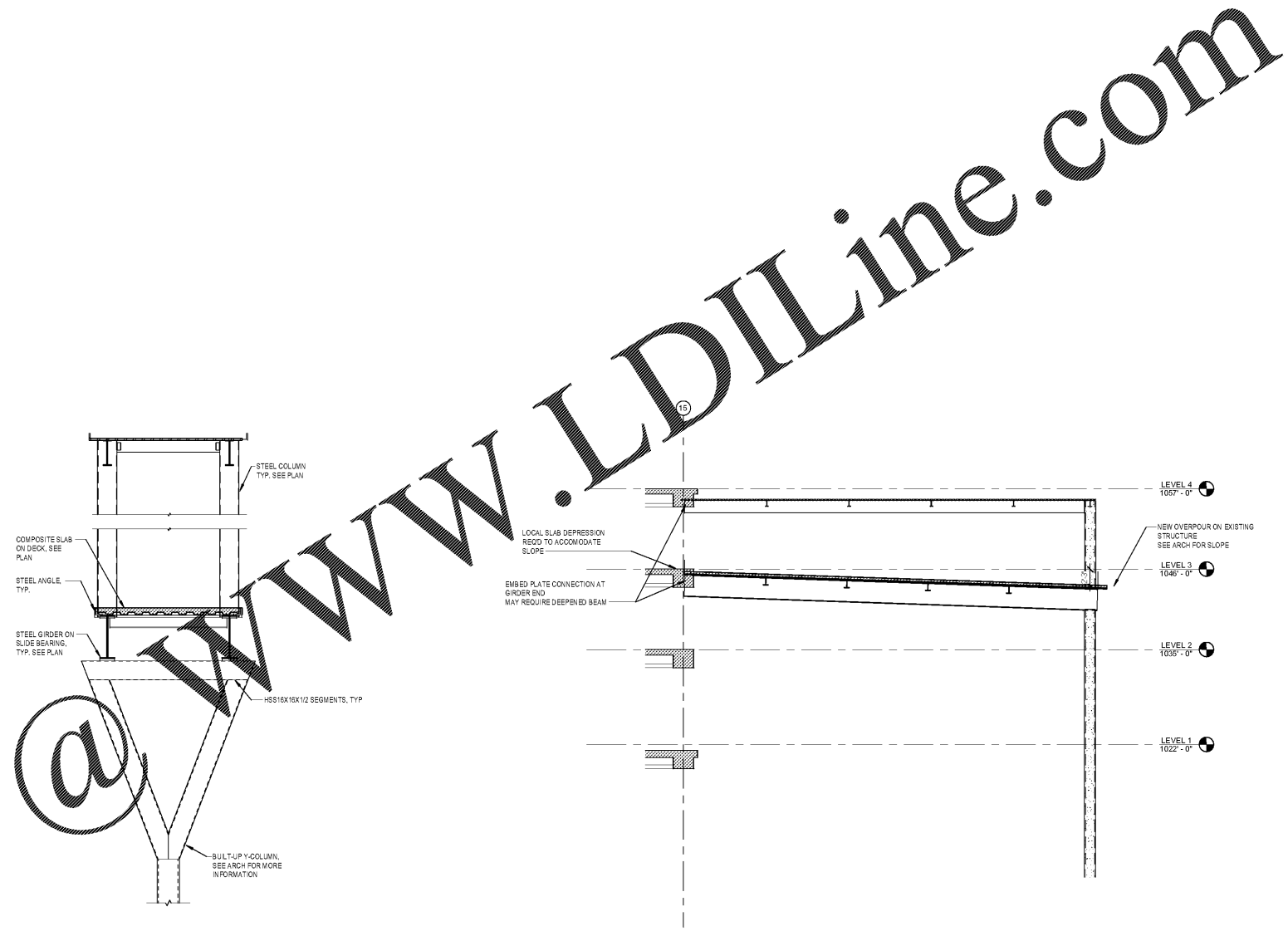


Professional Seals

**NOT FOR
 CONSTRUCTION**

No.	Description	Date
1	DD: GMP	2019.07.03

Order Plans @ www.LDILine.com

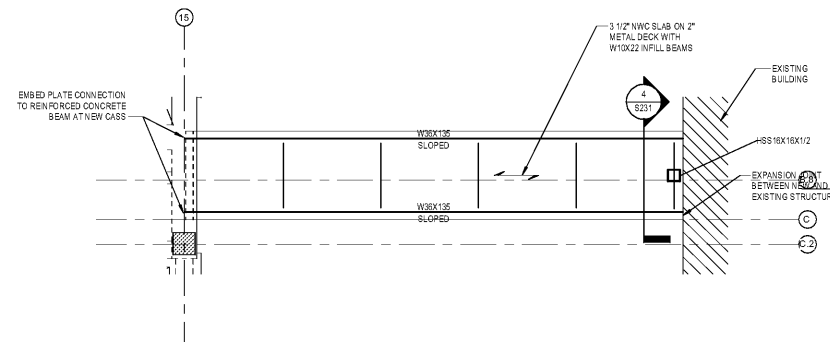


PEDESTRIAN BRIDGE NOTES

1. SEE ARCHITECTURAL DRAWINGS FOR SLAB EDGES, ELEVATIONS, AND SLOPES.
2. ALL STRUCTURAL STEEL FOR PEDESTRIAN BRIDGES SHALL BE GALVANIZED AND POWDER-COATED.
3. SEE S401 FOR RECOMMENDED PRICING ALLOWANCES.
4. BUILT-UP Y-COLUMN IS AESS LEVEL 3.
5. EXPOSED, INTERSECTING COMPONENTS TO BE CAST CONEX OR EQUIVALENT.
6. SEE ARCHITECTURAL DRAWINGS FOR MORE INFORMATION.

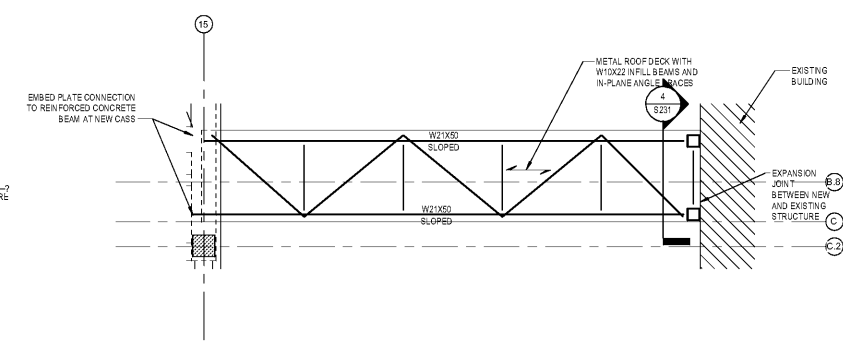
3 PEDESTRIAN BRIDGE ELEVATION

1/8" = 1'-0"



1 PARTIAL PLAN - PEDESTRIAN BRIDGE FLOOR

1/8" = 1'-0"



2 PARTIAL PLAN - PEDESTRIAN BRIDGE ROOF

1/8" = 1'-0"

Project No: 18.16013.00
 Sheet Title

**PARTIAL BRIDGE
 FRAMING PLANS**

Original is 30 x 43. Do not scale contents of this drawing
 Sheet Number

S231