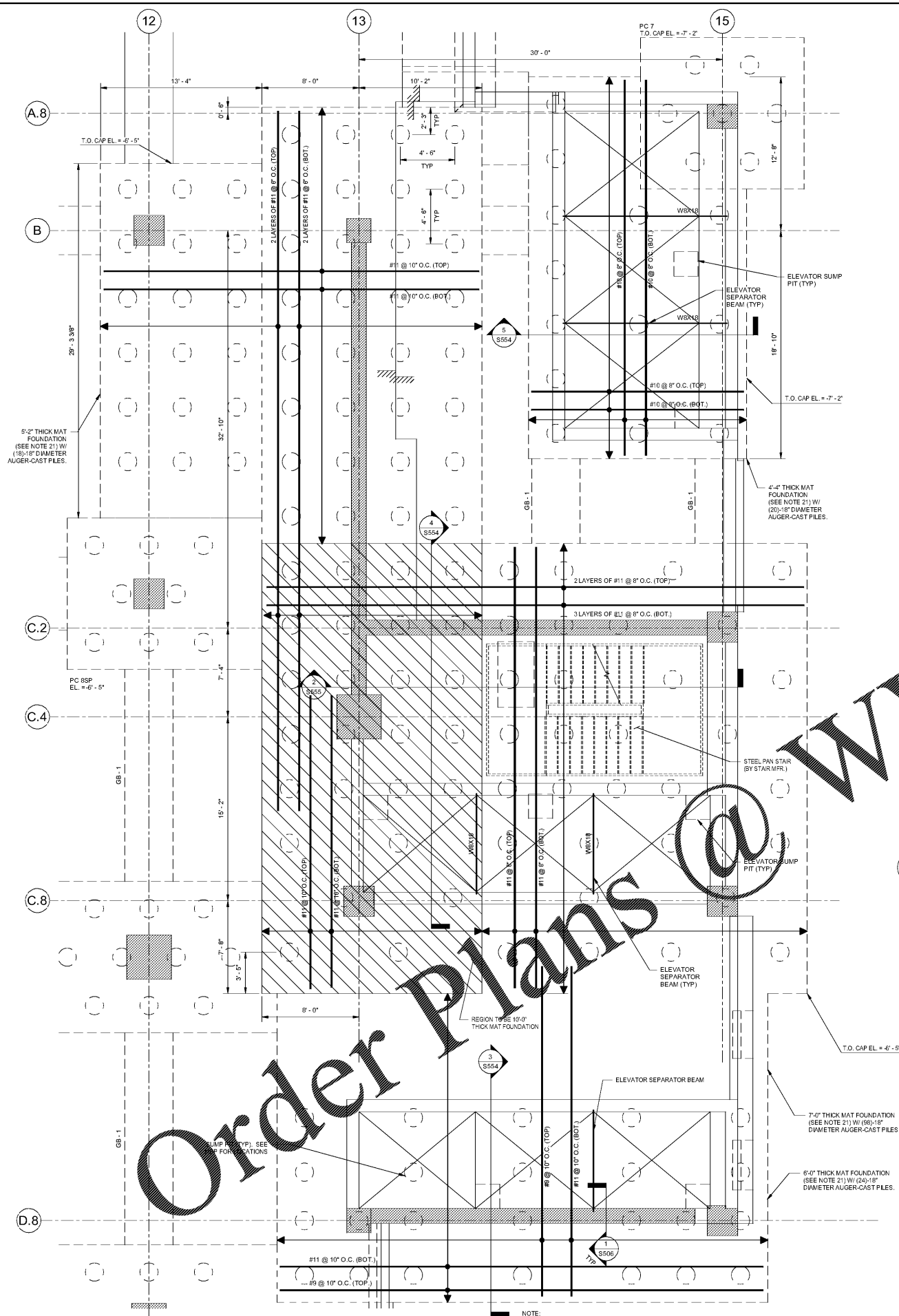
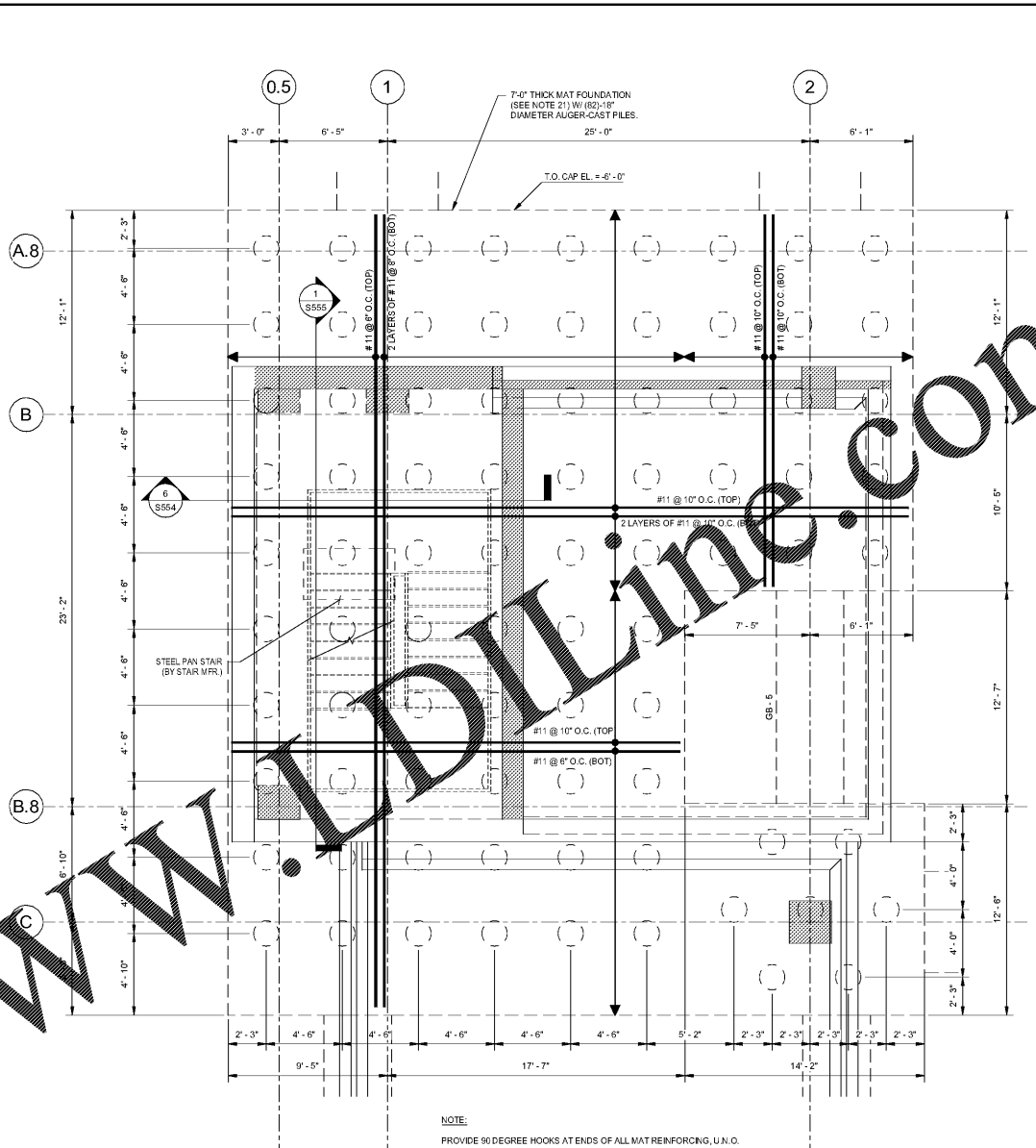


**NOT FOR  
 CONSTRUCTION**

No.	Description	Date
1	DD - GMP	2019.07.03



**1** PARTIAL FOUNDATION PLAN - GROUND LEVEL - EAST CORE  
 WALLS  
 1/4" = 1'-0"



**2** PARTIAL FOUNDATION PLAN - GROUND LEVEL - WEST CORE  
 WALL  
 1/4" = 1'-0"

**FOUNDATION NOTES:**

- SEE S001 AND S002 FOR STRUCTURAL GENERAL NOTES.
- COORDINATE SITE AND SUBGRADE PREPARATION PROCEDURES WITH GEOTECHNICAL ENGINEER. SITE AND SUBGRADE PREPARATION TO INCLUDE, BUT NOT LIMITED TO, EXCAVATION, CRUSHING AND REPLACING OF ALL THE BOLLARD FILL CURRENTLY ON THE SITE. CONTRACTOR TO ENGAGE TESTING AGENCY TO VERIFY CONFORMANCE OF SUBGRADE PREPARATION PROCEDURES WITH SPECIFICATIONS AND GEOTECHNICAL REPORT.
- SEE ARCH DRAWING 5xxx FOR ALL EDGE OF SLAB DIMENSIONS, SLAB SLOPES, FITS, DRAINS, DEPRESSED SLABS, SLAB OPENINGS AND CONCRETE WALL LOCATIONS.
- DATUM ELEVATION 0'-0" = 1002'-0" NGVD.
- TOP OF FILECAP/FOOTING ELEVATIONS SHOWN ARE NOT FINAL AND ARE TO BE COORDINATED WITH RAIN LEADERS, UNDER-GROUND PLUMBING LINES AND ELECTRICAL CONDUIT.
- SEE S500 SERIES FOR TYPICAL FOUNDATION DETAILS.
- C.J. INDICATES CONTROL JOINT. SEE S505 FOR CONTROL JOINT DETAILS. CONTRACTOR TO SUBMIT CONTROL JOINT LAYOUT FOR APPROVAL BY ARCHITECT AND ENGINEER.
- /— INDICATES STEPPED FOOTING. SEE S506 FOR STEPPED FOOTING DETAIL.
- SEE 5xxx AND 6xxx FOR COLUMN SCHEDULE. ALL COLUMNS ARE CENTERED ON CROSS GRIDS, U.N.O. ALL FOOTINGS AND FILECAPS ARE CENTERED ON COLUMNS, U.N.O.
- "PC" IF INDICATES AUGERCAST FILECAP FOUNDATION WITH 18" DIAMETER 400K# NET CAPACITY FILES. SEE S507 AND S508 FOR FILECAP DETAILS.
- THE CONTRACTOR SHALL DRILL PROBE PILES AT ALL COLUMN LOCATIONS TO ESTIMATE PILE LENGTHS. PRIOR TO FOUNDATION INSTALLATION. SPREAD FOOTINGS SHOULD BE USED IF PILE LENGTHS ARE LESS THAN 10'-0". SEE 45xxx FOR EQUIVALENT SPREAD FOOTING SIZES. ALL SPREAD FOOTINGS ARE DESIGNED FOR 20 KSF BEARING CAPACITY. IF 20 KSF MATERIAL IS NOT ENCOUNTERED AT BOTTOM OF FOOTING, OVER-EXCAVATE AND FILL WITH LEAN CONCRETE PER DETAIL 45xxx. LOCATIONS INDICATED ON PLAN ARE WHERE SHALLOW REFUSAL IS MOST LIKELY TO BE ENCOUNTERED, PER GEOTECHNICAL REPORT.
- "FX-X" IF INDICATES FOOTING. SEE 5xxx FOR FOOTING SCHEDULE. WHERE 20 KSF BEARING MATERIAL IS BELOW FOOTING ELEVATION, OVER-EXCAVATE AND FILL WITH LEAN CONCRETE TO BOTTOM OF FOOTING PER DETAIL 45xxx.
- UNDER GROUND ELECTRICAL DUCT BANK. COORDINATE LOCATIONS WITH ELECTRICAL ENGINEER. SEE ELECTRICAL DRAWINGS FOR DUCT BANK DETAILS.
- COORDINATE BOLLARD LOCATIONS W/ ARCH. SEE S507 FOR BOLLARD ON-GRADE INFORMATION.
- INDICATES CURBS/TOPPING SLABS. SEE ARCH FOR DIMENSIONS AND DETAIL 45xxx.
- COORDINATE ALL UNDER-SLAB PLUMBING AND AREA DRAIN LOCATIONS WITH PLUMBING DRAWINGS.
- COORDINATE ALL ELECTRICAL DUCT BANKS, RACEWAYS, AND CONDUIT RUNS FOR LIGHTING REQUIREMENTS WITH ELECTRICAL DRAWINGS.
- INDICATES WALKWAYS. SEE ARCH FOR DIMENSIONS.
- SETTLEMENT MONITORING PLATES TO BE INSTALLED IN THE SUB-BASE. SEE GEOTECHNICAL REPORT AND CIVIL DRAWINGS FOR PLATE LOCATIONS AND DETAILS.
- VERIFY LOCATIONS OF ALL EXISTING UNDERGROUND UTILITIES PRIOR TO INSTALLATION OF DEEP FOUNDATIONS.
- INDICATED MAT FOUNDATION TO USE 6,000 PSI CONCRETE.
- THE PRELIMINARY GEOTECHNICAL REPORT INDICATES THAT THE SITE SHALL BE SURCHARGED FOR A PERIOD OF 4 MONTHS PRIOR TO THE PLACEMENT OF THE UNDERGROUND UTILITIES, AUGERCAST PILES, AND SLAB ON GRADE. THE CONTRACTOR SHALL INCORPORATE SURCHARGING OF THE SITE INTO THE SEQUENCING AND DESIGN SCHEDULE. PROVIDE AN ALLOWANCE FOR A STRUCTURED SLAB ON GRADE, IN LIEU OF SURCHARGING, IF SURCHARGING IS NOT CONSIDERED TO BE A VIABLE OPTION.
- PRELIMINARY INFORMATION INDICATES THAT THE EXISTING BUILDINGS ARE SUPPORTED ON DEEP FOUNDATIONS. NEW BUILDING FOUNDATIONS MAY CONTACT WITH THE EXISTING FOUNDATIONS. THE IMPACT TO THE CURRENT FOUNDATION SCHEME IS UNKNOWN AND WILL LIKELY REQUIRE DEMOLITION, BRIDGING, AND/OR INCORPORATION OF EXISTING DEEP FOUNDATIONS.
- CONTRACTOR SHALL INCLUDE A CONTINGENCY FOR FOUNDATION MODIFICATIONS DUE TO EXISTING CONDITIONS.
- FOR SCHEMATIC DESIGN PRICING PURPOSES, PROVIDE AN ADDITIONAL TEN (10) PERCENT ALLOWANCE FOR CONCRETE, REINFORCEMENT, AND FILES TO THE QUANTITIES INDICATED IN THE DOCUMENTS.
- INDICATES SLAB DEPRESSION. SEE 1/5505 FOR DETAILS.

Order Plans @

WWW.DLINE.COM