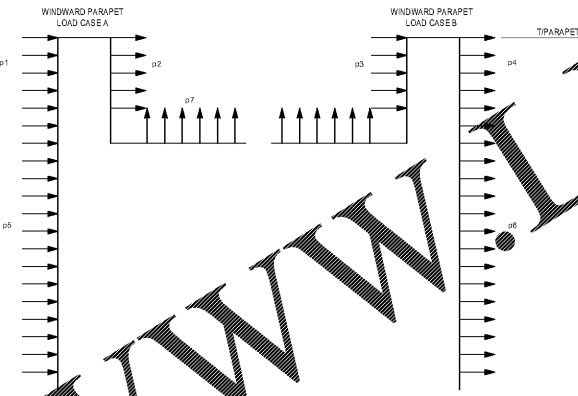


1 C&C WIND LOADING PLAN - ROOF  
1" = 40'-0"

COMPONENTS AND CLADDING WIND PRESSURES BELOW LEVEL 5					
EFFECTIVE WIND AREA	ROOF LOAD (PSF)			WALL LOAD (PSF)	
	ZONE 1	ZONE 2	ZONE 3	ZONE 4	ZONE 5
10 ft <sup>2</sup>	+16.0 -55.6	+16.0 -81.3	+16.0 -106.9	+41.3 -41.3	+41.3 -67.0
20 ft <sup>2</sup>	+16.0 -52.8	+16.0 -77.8	+16.0 -102.7	+41.3 -41.3	+41.3 -67.0
50 ft <sup>2</sup>	+16.0 -49.9	+16.0 -73.0	+16.0 -96.7	+38.5 -39.9	+38.5 -60.7
100 ft <sup>2</sup>	+16.0 -47.0	+16.0 -69.9	+16.0 -92.1	+37.1 -38.5	+37.1 -55.6
200 ft <sup>2</sup>	+16.0 -44.8	+16.0 -66.4	+16.0 -87.0	+35.6 -37.1	+35.6 -50.5
500 ft <sup>2</sup>	+16.0 -41.3	+16.0 -61.3	+16.0 -81.3	+32.8 -35.6	+32.8 -44.2

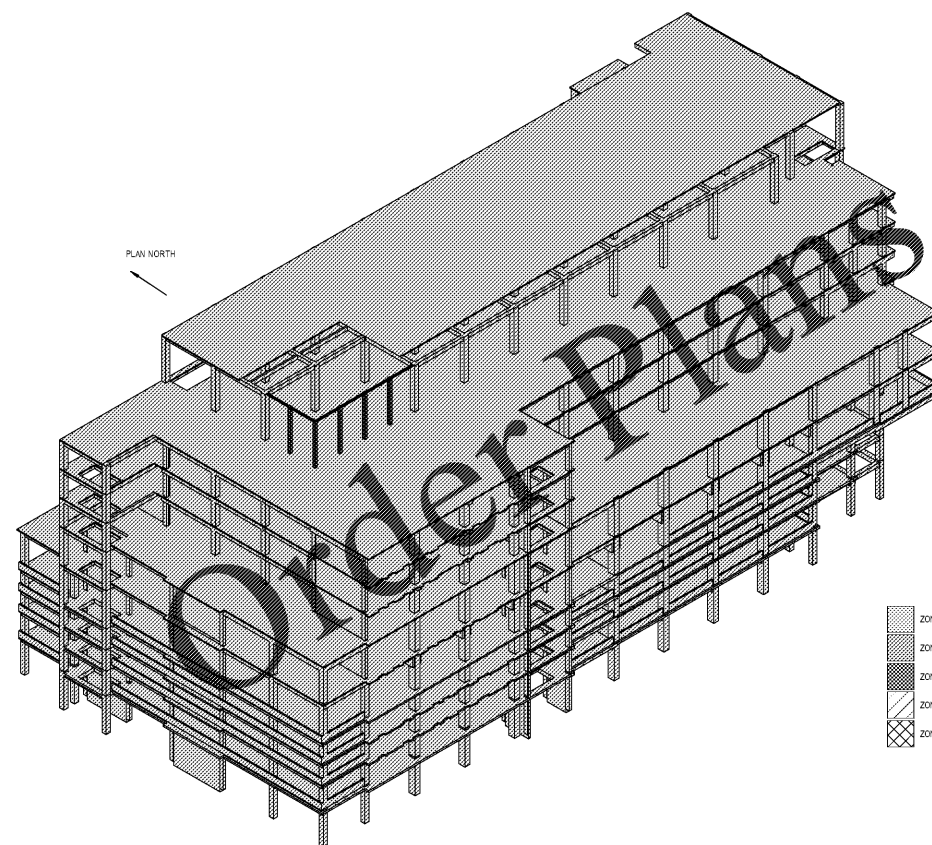
NOTES:  
 1. ZONE DESIGNATIONS ARE BASED ON FIGURE 30.6-1 FROM ASCE 7-10.  
 2.  $s = 38'-0"$   
 3. COMPONENTS AND CLADDING PRESSURES ACT NORMAL TO THE SURFACE. POSITIVE PRESSURES ACT TOWARD THE SURFACE AND NEGATIVE PRESSURES ACT AWAY FROM THE SURFACE.  
 4. DESIGN PRESSURE FOR COMPONENTS AND CLADDING SHALL NOT BE LESS THAN 18PSF (FACTORED) ACTING IN EITHER DIRECTION NORMAL TO THE SURFACE.  
 5. THE EFFECTIVE WIND AREA IS THE SPAN LENGTH MULTIPLIED BY AN EFFECTIVE WIDTH THAT NEED NOT BE LESS THAN ONE-THIRD THE SPAN LENGTH. FOR CLADDING FASTENERS, THE EFFECTIVE WIND AREA SHALL NOT BE GREATER THAN THE AREA THAT IS TRIBUTARY TO AN INDIVIDUAL FASTENER.  
 6. DESIGN PRESSURES SHOWN IN THE ABOVE TABLES HAVE BEEN CALCULATED USING A K<sub>z</sub> VALUE OF 0.85. IF THE LOAD COMBINATIONS SPECIFIED IN ASCE 7-10 ARE NOT USED IN DESIGN, THE PRESSURES MUST BE INCREASED BY 10%.  
 7. PRESSURES SHOWN ABOVE MAY BE MULTIPLIED BY 0.7 FOR DEFLECTION CHECKS.

COMPONENTS AND CLADDING WIND PRESSURES ABOVE LEVEL 5					
EFFECTIVE WIND AREA	ROOF LOAD (PSF)			WALL LOAD (PSF)	
	ZONE 1	ZONE 2	ZONE 3	ZONE 4	ZONE 5
10 ft <sup>2</sup>	+16.0 -56.4	+16.0 -88.6	+16.0 -120.7	+38.5 -38.6	+38.5 -70.7
20 ft <sup>2</sup>	+16.0 -52.9	+16.0 -84.3	+16.0 -115.4	+38.5 -38.6	+38.5 -70.7
50 ft <sup>2</sup>	+16.0 -49.3	+16.0 -78.2	+16.0 -107.9	+35.0 -36.0	+35.0 -62.0
100 ft <sup>2</sup>	+16.0 -45.7	+16.0 -74.3	+16.0 -102.2	+33.2 -33.2	+33.2 -56.4
200 ft <sup>2</sup>	+16.0 -42.9	+16.0 -70.0	+16.0 -95.7	+31.4 -27.9	+31.4 -50.0
500 ft <sup>2</sup>	+16.0 -38.6	+16.0 -63.9	+16.0 -88.6	+27.9 -31.4	+27.9 -42.2

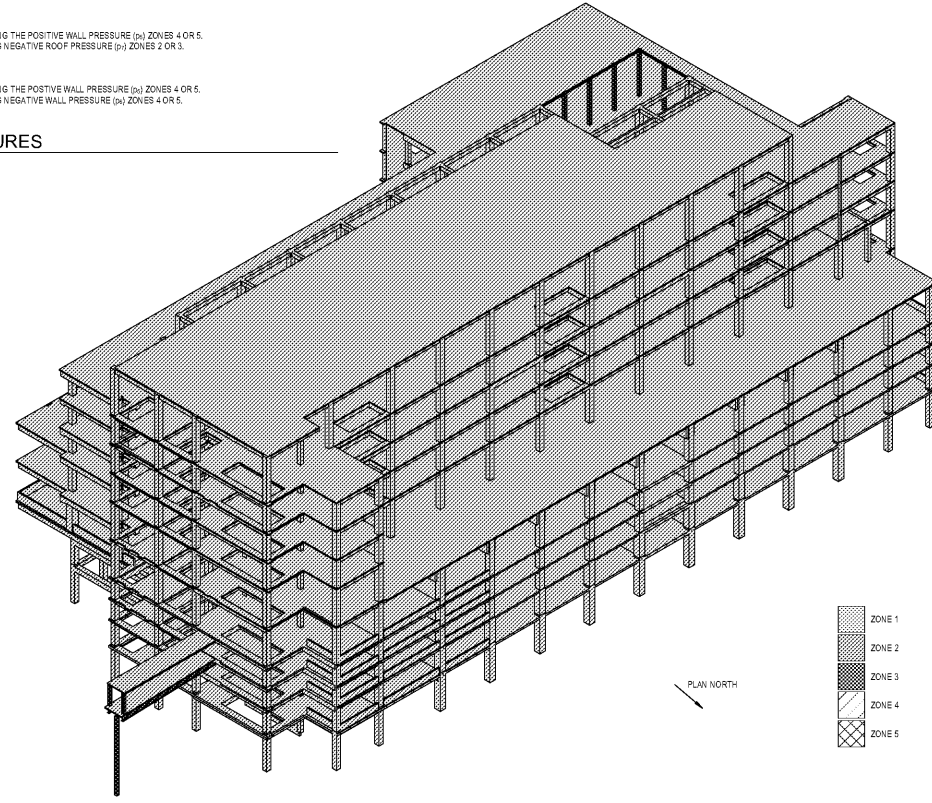


NOTES:  
 1. WINDWARD PARAPET PRESSURE (p<sub>1</sub>) IS DETERMINED USING THE POSITIVE WALL PRESSURE (p<sub>4</sub>) ZONES 4 OR 5.  
 2. LEeward PARAPET PRESSURE (p<sub>2</sub>) IS DETERMINED USING NEGATIVE ROOF PRESSURE (p<sub>3</sub>) ZONES 2 OR 3.  
 3. WINDWARD PARAPET PRESSURE (p<sub>3</sub>) IS DETERMINED USING THE POSITIVE WALL PRESSURE (p<sub>4</sub>) ZONES 4 OR 5.  
 4. LEeward PARAPET PRESSURE (p<sub>4</sub>) IS DETERMINED USING NEGATIVE WALL PRESSURE (p<sub>9</sub>) ZONES 4 OR 5.  
 5. WINDWARD PARAPET PRESSURE (p<sub>5</sub>) IS DETERMINED USING THE POSITIVE WALL PRESSURE (p<sub>4</sub>) ZONES 4 OR 5.  
 6. LEeward PARAPET PRESSURE (p<sub>6</sub>) IS DETERMINED USING NEGATIVE WALL PRESSURE (p<sub>9</sub>) ZONES 4 OR 5.  
 7. WINDWARD PARAPET PRESSURE (p<sub>7</sub>) IS DETERMINED USING THE POSITIVE WALL PRESSURE (p<sub>4</sub>) ZONES 4 OR 5.  
 8. LEeward PARAPET PRESSURE (p<sub>8</sub>) IS DETERMINED USING NEGATIVE WALL PRESSURE (p<sub>9</sub>) ZONES 4 OR 5.  
 9. WINDWARD PARAPET PRESSURE (p<sub>9</sub>) IS DETERMINED USING THE POSITIVE WALL PRESSURE (p<sub>4</sub>) ZONES 4 OR 5.  
 10. LEeward PARAPET PRESSURE (p<sub>10</sub>) IS DETERMINED USING NEGATIVE WALL PRESSURE (p<sub>9</sub>) ZONES 4 OR 5.

2 C&C PARAPET WIND PRESSURES  
1/2" = 1'-0"



3 C&C WIND LOADING PLAN - LOOKING SOUTHWEST



4 C&C WIND LOADING PLAN - LOOKING NORTHEAST

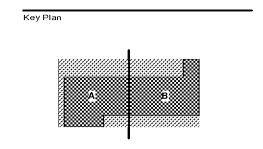


Project  
**THE CENTER FOR  
 ADVANCED SURGICAL  
 SERVICES (CASS)**  
 88 JESSE HILL DRIVE  
 ATLANTA, GA 30303  
 Prepared For  
**GRADY HEALTH SYSTEM**  
 80 JESSEE HILL DR. SE  
 ATLANTA, GA 30303



Helmut J. Gots & Kastbaum, Inc.  
 191 Peachtree Street, NE, Suite 2250  
 Atlanta, GA 30303 USA  
 T+1 404 439 9000 F+1 404 439 9001

All reproduction & intellectual property rights reserved © 2019  
 In Association with



Professional Seal

**NOT FOR  
 CONSTRUCTION**

No.	Description	Date
1	ED - GMP	2019.07.03

Project No: 18.16013.00  
 Sheet Title  
**WIND LOADING PLANS**

Original is 30" x 42". Do not scale contents of this drawing.  
 Sheet Number

**S026**