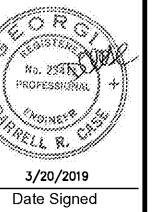
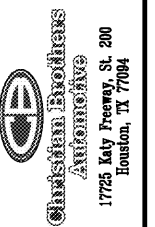


STEWART + REINDERBMA
ARCHITECTURE, PLLC
5450 E. High Street, Suite 200
Phoenix, Arizona 85054
P: 480.515.5125
www.sra360.com

Christian Brothers
Automotive
3745 Marietta Highway
Canton, GA 30114



Revisions

3/20/19 - Issued for Permit

Project No. 18-067

Drawn By:

Date: 3/20/19

Sheet Title:

MECHANICAL
POWER PLANS

Drawing No.

E-3.02

RH9N-02-2019

ELECTRICAL KEYED NOTES:

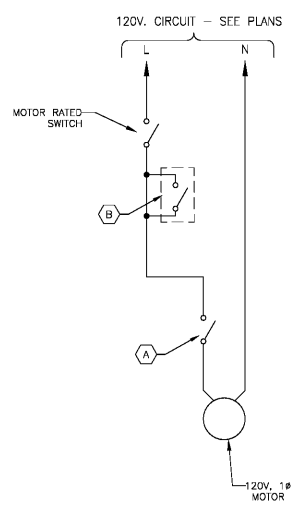
- 1 PROVIDE A 30/5/NE/3R DISCONNECT SWITCH ON EXTERIOR WALL FOR CU-1 SHUTOFF. DISCONNECT AND DUPLEX LOCATED 4'-6" OFF BACK WALL. FINAL CONNECTIONS SHALL BE MADE VIA SEALTITE FLEXIBLE CONDUIT.
- 2 PROVIDE A 20A, 1P MOTOR RATED TOGGLE SWITCH FOR AHU-1 DISCONNECT. FINAL CONNECTIONS SHALL BE MADE VIA FMC.
- 3 ELECTRICAL CONTRACTOR AND MECHANICAL CONTRACTOR SHALL COORDINATE LOCATIONS OF RADIANT HEATERS AND HIGH BAY "M" FIXTURES.
- 4 EXHAUST FAN TO BE CENTERED OVER TOILET. COORDINATE WITH MECHANICAL CONTRACTOR PRIOR TO ROUGH-IN.
- 5 TYPICAL OF (2); PROVIDE A 30A, 1P MOTOR RATED TOGGLE SWITCH FOR RADIANT HEATER DISCONNECT. FINAL CONNECTIONS SHALL BE MADE VIA SEALTITE FLEXIBLE CONDUIT.
- 6 PROVIDE A FLEXIBLE CONNECTION AT +156" FOR ELECTRIC ACTUATOR IN MECHANICAL INTAKE LOUVER. COORDINATE WORK WITH MECHANICAL CONTRACTOR. SEE WIRING DIAGRAM #2 ON DRAWINGS E-3.02.
- 7 COORDINATE EXACT LOCATION OF THERMOSTAT WITH MECHANICAL PLANS AND MECHANICAL CONTRACTOR PRIOR TO ROUGH-IN.
- 8 TYPICAL OF (4); PROVIDE A NEW 5-20 AMPLEX RECEPTACLE AT +96" FOR OSCILLATION FAN POWER CONNECTION. PROVIDE SPST SWITCHES AT +54" (NOT SHOWN) TO CONTROL THESE RECEPTACLES. MOUNT RECEPTACLE AND SWITCH VERTICALLY ALIGNED WITH FAN.
- 9 EC SHALL PROVIDE, INSTALL AND WIRE A SMOKE DETECTOR IN THE REPAIR AREA OF FAN COIL UNIT #1. CONNECT TO FAN COIL UNIT #1 CONTROL CIRCUIT SO THAT IN THE EVENT OF A SMOKE DETECTION THE FAN WILL SHUT DOWN.
- 10 WIRE EXHAUST FAN EF-3 PER DIAGRAM 2/E-3.02.

ELECTRICAL GENERAL NOTES:

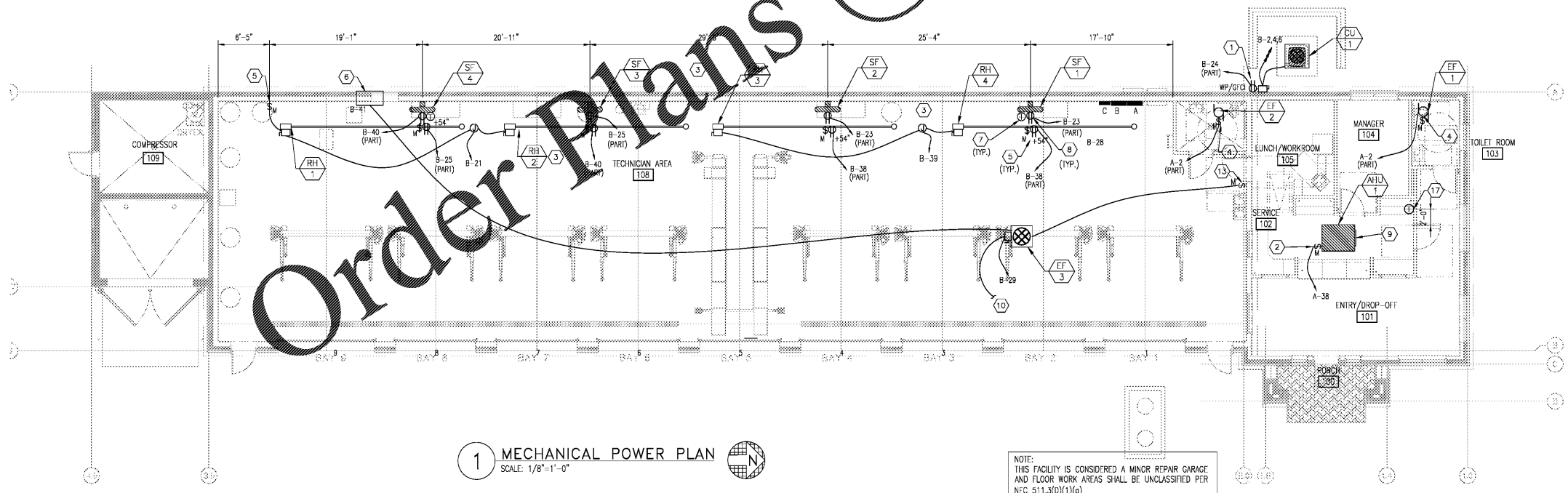
- A. REFER TO SHEET E-1.01 FOR GENERAL NOTES AND SYMBOLS THAT SHALL APPLY TO ALL SHEETS IN THIS SET UNLESS NOTED OTHERWISE IN THE KEYED NOTES.
- B. ALL 120V 20A CONVENIENCE AND TELEPHONE RECEPTACLES IN REPAIR AREA AND PERIMETER WALLS SHALL BE MOUNTED AT +54" A.F.F. UNLESS NOTED OTHERWISE.
- C. ALL 120V 20A CONVENIENCE RECEPTACLES SHALL EITHER HAVE INTERNAL GFCI PROTECTION, OR SHALL BE SERVED BY GFCI RATED BREAKERS PER NEC ARTICLE 511.12.
- D. ALL MULTIWIRE CIRCUITS SHALL HAVE A MINIMUM NEUTRAL SIZE OF #10AWG.
- E. ALL RECEPTACLES IN RECEPTION, OFFICE, SERVICE AREA, AND RESTROOMS SHALL BE MOUNTED AT +18" A.F.F. UNLESS OTHERWISE NOTED.
- F. ALL WIRE SIZES SHALL BE #12 THIN/THWN, UNLESS NOTED OTHERWISE.
- G. ALL CONDUIT SHALL BE 3/4" EMT, UNLESS NOTED OTHERWISE.
- H. VERIFY ALL EQUIPMENT, EQUIPMENT PLACEMENT, AND EQUIPMENT MOUNTING HEIGHTS WITH OWNER'S REPRESENTATIVE.
- I. VERIFY ALL EQUIPMENT OVERCURRENT PROTECTION WITH MANUFACTURER.
- J. CONDUCTORS HAVE BEEN SIZED FOR A MAXIMUM VOLTAGE DROP OF 2% IN FEEDERS, AND 3% IN BRANCH CIRCUITS.
- K. ALL OUTLETS, UNLESS OTHERWISE SPECIFIED, TO BE MINIMUM OF 20 AMPS.
- L. UTILIZE SPARES AS NECESSARY FOR ADDITIONAL ELECTRICAL REQUIREMENTS.
- M. NO WATER PIPING SHALL BE RUN DIRECTLY ABOVE ELECTRICAL PANELS.
- N. ALL 20A 120V CONVENIENCE RECEPTACLES LOCATED OUTDOORS, IN GARAGE, OR WITHIN 6'-0" OF WATER SUPPLYING PLUMBING FIXTURES SHALL HAVE GFCI PROTECTION.
- O. ALL EXTERIOR HOMERUNS SHALL HAVE A MINIMUM CONDUCTOR SIZE OF #10AWG.
- P. ALL ADJACENT POWER, DATA, AND TELEPHONE RECEPTACLES SHALL BE GANGED TOGETHER, AS PRACTICAL.
- Q. THESE DRAWINGS ARE INTENDED TO BE COMPLETE AT THE TIME OF ISSUE, BUT WILL NOT REFLECT ANY NEW EQUIPMENT OR LIGHTS THAT MAY BE MOVED, ADDED, OR SUBSTITUTED AFTER THE ISSUE DATE. PROVIDE ALL NECESSARY BREAKERS, WIRING, CONDUITS, RECEPTACLES, JUNCTION BOXES, SWITCHES, ETC. FOR EQUIPMENT AND LIGHTS NOT SHOWN ON PLANS OR FOR EQUIPMENT AND LIGHTS THAT HAVE BEEN MOVED, SUBSTITUTED, OR ALTERED. VERIFY ALL ELECTRICAL REQUIREMENTS OF NEW OR ALTERNATE EQUIPMENT AND LIGHTS WITH MANUFACTURER. CONTACT ELECTRICAL ENGINEER IF ANY DISCREPANCIES ARISE.

KEYED NOTES:

- A DISCONNECT SWITCH AT MOTOR WHERE INDICATED ON DRAWING OR REQUIRED BY CODE. DISCONNECT FURNISHED BY M.C. AS PART OF FAN WHEN MOTOR IS ROOF FAN.
- B 120V, MOTOR OPERATED LOUVER BY M.C. MOTOR RATED DISCONNECT BY E.C..



2 EXHAUST FAN #3 WIRING DETAIL
NOT TO SCALE



1 MECHANICAL POWER PLAN
SCALE: 1/8"=1'-0"

NOTE:
THIS FACILITY IS CONSIDERED A MINOR REPAIR GARAGE
AND FLOOR WORK AREAS SHALL BE UNCLASSIFIED PER
NEC 511.3(D)(1)(c)

Aedifica case engineering | St. Louis - Montreal

796 Mens Court
St. Louis, MO 63026
T 636.349.1600
F 636.349.1730
aedificacase.com

mechanical
electrical
plumbing
fire protection
structural

CERTIFICATE OF AUTHORITY NO. PEF006438

Order Plans @ www.LDILine.com