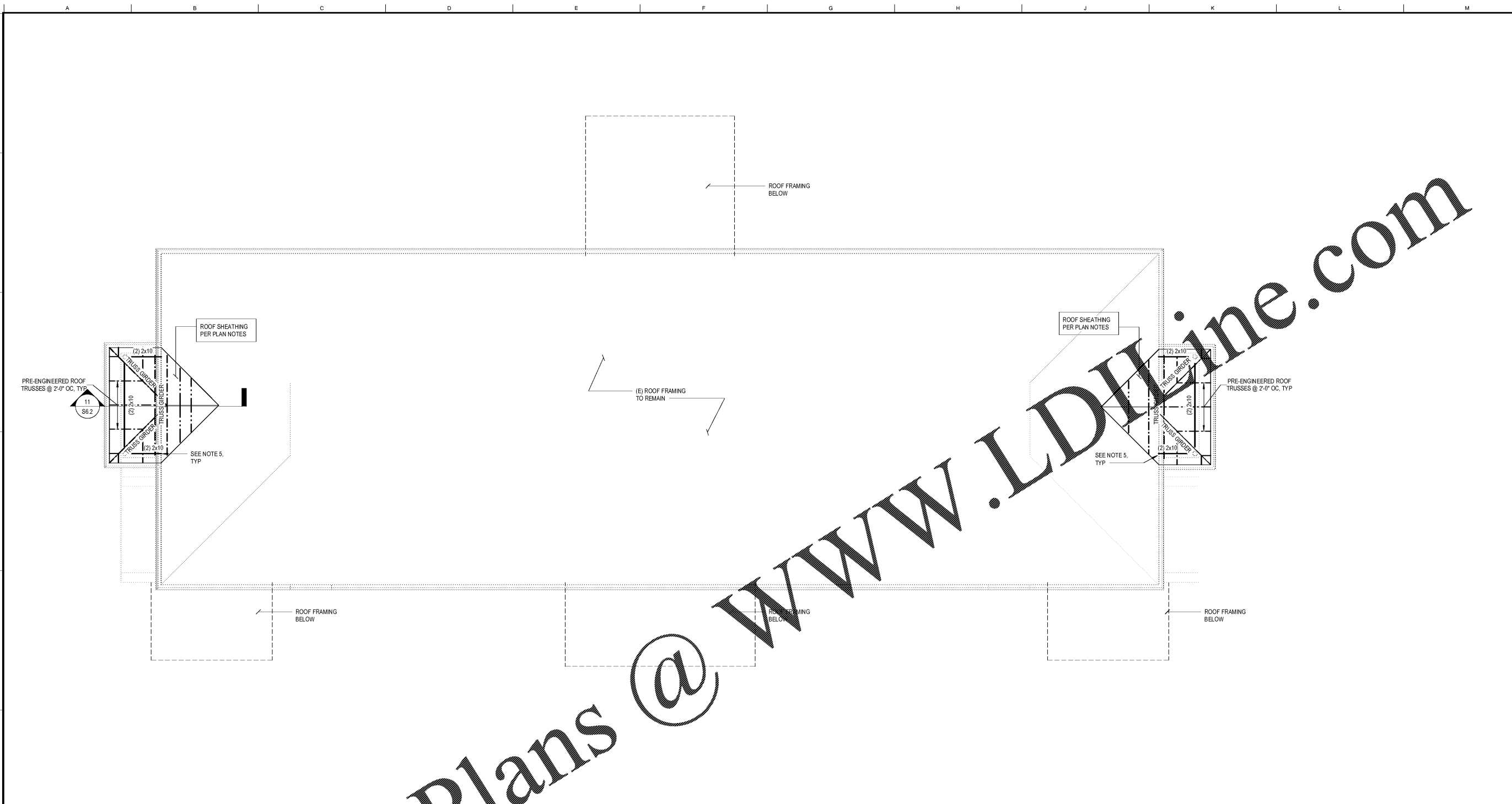




- FOR REVIEW ONLY
- FOR PERMITTING ONLY
- SCHEMATIC DESIGN
- DESIGN DEVELOPMENT
- CONSTRUCTION BIDDING
- CONSTRUCTION DOCUMENTS
- AS-BUILT RECORD SET

NO.	DATE	DESCRIPTION

SHEET ISSUED: May 7, 2019
DESIGNED BY: CGJ
DRAWN BY: ZSP
REVIEWED BY: CSB
SHEET TITLE:



TYPE A - ROOF FRAMING PLAN

1/4" = 1'-0"

- ROOF FRAMING PLAN NOTES:**
- ALL TRUSSES SHALL BE ORIENTED IN THE DIRECTION SHOWN. ROOF TRUSS GIRDERS MAY BE ADJUSTED +/- 6", UNLESS THE ADJUSTMENT LOCATES THE TRUSS GIRDER OVER A WINDOW HEADER. TRUSS LAYOUT SHALL NOT BE SIGNIFICANTLY ALTERED FROM THE CONSTRUCTION DOCUMENTS. IF THERE IS A CONFLICT, OR THE LAYOUT AS SHOWN IN THE CONSTRUCTION DOCUMENTS CANNOT PHYSICALLY BE CONSTRUCTED, CONTACT STRUCTURAL ENGINEER PRIOR TO ISSUING SHOP DRAWINGS.
 - WOOD ROOF SHEATHING SHALL BE 1932" UNO. SEE GENERAL NOTES FOR MORE INFORMATION. SEE TYPICAL DETAIL FOR ATTACHMENT AND LAYOUT REQUIREMENTS. BLOCKING IS NOT REQUIRED UNLESS NOTED IN DETAILS. REFER TO STRUCTURAL GENERAL NOTES FOR ADDITIONAL REQUIREMENTS.
 - WINDOW AND DOOR HEADERS PER SCHEDULE.
 - ALL TRUSS GIRDERS SHALL BEAR DIRECTLY OVER (3)-2X4 IN THE WALL BELOW.
 - CONNECT (2) 2X10 W/ HUC210-2. CONTRACTOR SHALL VERIFY CONNECTION IS MADE INTO GROUT-FILLED CELLS. GROUT EXISTING CELLS AS REQUIRED.
 - MECHANICAL PENETRATIONS ARE PERMITTED IN THE LOCATIONS SHOWN ON PLAN. CONTACT EOR IF LOCATIONS VARY FROM WHAT IS SHOWN PRIOR TO CUTTING THE EXISTING SLAB.

ROOF FRAMING NOTES

C:\Users\ldwilvine\Documents\2018-1618281-CENTRAL-Revision_chairlift\csastuctures.com.rvt 5/6/2019 10:42:31 AM