



Geary Engineering  
 5502 Walsh Lane Suite 102  
 Rogers, AR. 72758  
 Phone: (479) 464-8006  
 E-mail: tgeary@gearyeng.com  
 Web: www.gearyeng.com

THESE DRAWINGS ARE PRELIMINARY IN NATURE AND INTENDED FOR REVIEW AND PERMITTING. DRAWINGS ARE NOT TO BE USED FOR CONSTRUCTION WITHOUT ARCHITECT'S AND ENGINEER'S SIGNATURE AND THEIR DATE OF ISSUE FOR CONSTRUCTION.



9726 E. 42nd St. SUITE 153  
 TULSA, OK 74146  
 918.640.6800  
 JHNSANFORD@AOL.COM

Copyright 2019 John Sanford

JOHN SANFORD,  
 AIA, NCARB  
 TN LICENSE #106056

NOT VALID FOR CONSTRUCTION UNLESS SIGNED IN THIS BLOCK

PROPOSED HOLIDAY INN LI9383  
 215 CRACKER BARREL DR., CLARKSVILLE, TN  
 MONTGOMERY COUNTY, TENNESSEE

PERMIT NO: \_\_\_\_\_  
 GE18002

No.	Description	Date

SHEET

M101  
 1st FLOOR PLAN

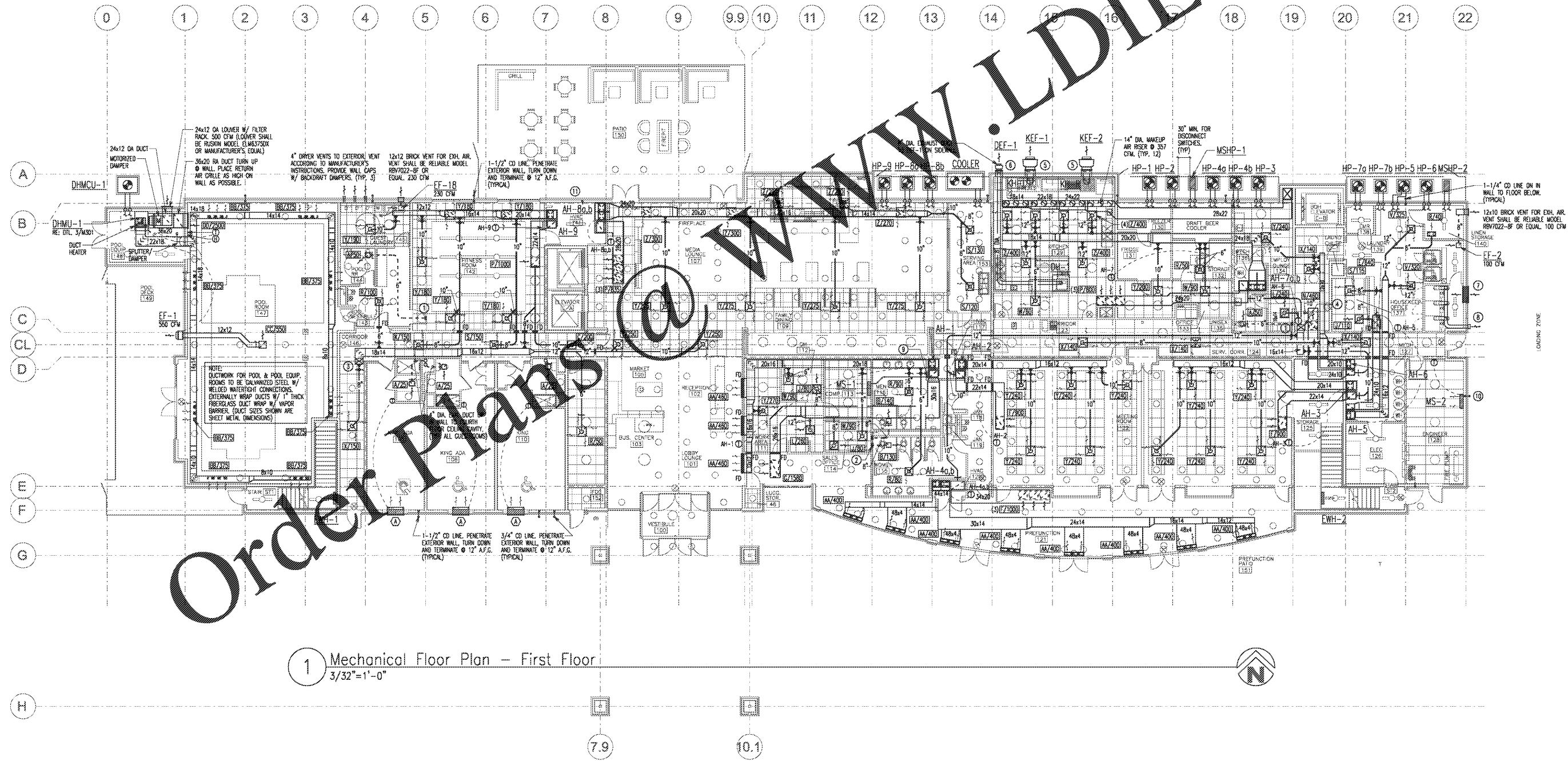
MARK	MAKE	MODEL	CFM RANGE	OVERALL SIZE	ROUND NECK	SQUARE NECK	MOUNT	USE	THROW	REMARKS
A	TRUS	350RL	0-75	10"x10"	----	8"ø"	CEILING	RETURN/EXHAUST	-----	OFF-WHITE FINISH
B	TRUS	350RL	76-160	12"x12"	----	10"x10"	CEILING	RETURN/EXHAUST	-----	OFF-WHITE FINISH
C	TRUS	350RL	161-276	14"x14"	----	12"x12"	CEILING	RETURN/EXHAUST	-----	OFF-WHITE FINISH
D	TRUS	350RL	276-475	18"x18"	----	16"x16"	CEILING	RETURN/EXHAUST	-----	OFF-WHITE FINISH
E	TRUS	350RL	476-700	22"x22"	----	20"x20"	CEILING	RETURN/EXHAUST	-----	OFF-WHITE FINISH
F	TRUS	350RL	701-1000	26"x22"	----	24"x20"	CEILING	RETURN/EXHAUST	-----	OFF-WHITE FINISH
G	TRUS	350RL	1001-1600	44"x22"	----	42"x20"	CEILING	RETURN/EXHAUST	-----	OFF-WHITE FINISH
H	TRUS	PAR	0-60	24"x24"	6"ø"	----	LAY-IN	RETURN/EXHAUST	-----	OFF-WHITE FINISH
J	TRUS	PAR	61-120	24"x24"	8"ø"	----	LAY-IN	RETURN/EXHAUST	-----	OFF-WHITE FINISH
K	TRUS	PAR	121-175	24"x24"	10"ø"	----	LAY-IN	RETURN/EXHAUST	-----	OFF-WHITE FINISH
L	TRUS	PAR	176-250	24"x24"	12"ø"	----	LAY-IN	RETURN/EXHAUST	-----	OFF-WHITE FINISH
M	TRUS	PAR	251-350	24"x24"	14"ø"	----	LAY-IN	RETURN/EXHAUST	-----	OFF-WHITE FINISH
N	TRUS	PAR	351-460	24"x24"	16"ø"	----	LAY-IN	RETURN/EXHAUST	-----	OFF-WHITE FINISH
P	TRUS	PAR	461-1000	24"x24"	----	22"x22"	LAY-IN	RETURN/EXHAUST	-----	OFF-WHITE FINISH
R	TRUS	MCD	0-100	18"x18"	6"ø"	12"x12"	CEILING	SUPPLY	4-WAY	OFF-WHITE FINISH
S	TRUS	MCD	101-175	18"x18"	8"ø"	12"x12"	CEILING	SUPPLY	4-WAY	OFF-WHITE FINISH
T	TRUS	MCD	176-275	18"x18"	10"ø"	12"x12"	CEILING	SUPPLY	4-WAY	OFF-WHITE FINISH
V	TRUS	MCD	276-400	18"x18"	12"ø"	12"x12"	CEILING	SUPPLY	4-WAY	OFF-WHITE FINISH
W	TRUS	DMN	0-100	24"x24"	6"ø"	----	LAY-IN	SUPPLY	4-WAY	OFF-WHITE FINISH
X	TRUS	DMN	101-175	24"x24"	8"ø"	----	LAY-IN	SUPPLY	4-WAY	OFF-WHITE FINISH
Y	TRUS	DMN	176-275	24"x24"	10"ø"	----	LAY-IN	SUPPLY	4-WAY	OFF-WHITE FINISH
Z	TRUS	DMN	276-400	24"x24"	12"ø"	----	LAY-IN	SUPPLY	4-WAY	OFF-WHITE FINISH
AA	TRUS	LL-1	475 MAX	60"x60"	----	48"x48"	SURFACE	SUPPLY	LINEAR	OFF-WHITE FINISH
BB	TRUS	CT-48	400 MAX	50"x60"	----	48"x48"	SURFACE	SUPPLY	LINEAR	OFF-WHITE FINISH
CC	TRUS	350ZPL	0-600	20"x20"	----	18"x18"	CEILING	EXHAUST	-----	OFF-WHITE FINISH
DD	TRUS	350ZPL	0-600	36"x36"	----	36"x36"	CEILING	RETURN	-----	OFF-WHITE FINISH

Notes:  
 1. Coordinate Exact Location of Diffusers with other Subcontractors. Refer to Electrical, Low-Voltage, & Sprinkler Shop Drawings.  
 2. All Diffusers Shall be Off-White Unless Noted Otherwise.  
 3. Airflow Quantities as Noted on Mechanical Drawings.  
 4. If Not Shown on Drawings, Round to Diffuser or Grille shall Match Air Duct Neck Size as shown in Schedule.  
 5. Manufacturers and Model Numbers Listed Represent a Standard. Approved Manufacturers are: Trus, Hunter & Doucette, J&J, Metal Aire, Cornea, and Krueger.  
 6. Provide a Manual Volume Damper for all Air Devices Located in Plenum Ceilings. Damper Shall be Operable from Device Face.

- MECHANICAL KEYED NOTES**
- 6" DIA. DUCT TO 8" DIA. DUCT IN WALL. ROUTE DUCT UP IN WALL ABOVE TO FOURTH FLOOR CEILING CAVITY.
  - 8" DIA. DUCT TO 10" DIA. DUCT IN WALL. ROUTE DUCT UP IN WALL ABOVE TO FOURTH FLOOR CEILING CAVITY.
  - 18x14 MAKEUP AIR DUCT FROM ABOVE.
  - 20x14 MAKEUP AIR DUCT FROM ABOVE.
  - 16" DIA. SINGLE WALL GREASE DUCT TO KEF ON SIDEWALL. DUCT SHALL CONFORM TO UL 197B. PROVIDE 2 LAYERS OF 1.5" FIREMASTER FASTWRAP XL BY WORGAN THERMAL CERAMIC PROVIDING A 2 HOUR FIRE RATING, MEETING ASTM E2336. (MOUNT AS HIGH AS POSSIBLE)
  - 8" DIA. EXHAUST DUCT TO DEF-1 ON SIDEWALL. (MOUNT AS HIGH AS POSSIBLE)
  - (1) 40x30 MOTORIZED ALUMINUM LOUVER, HUSON MODEL ELM8375, FOR MAKEUP AIR @ 12" A.F.G. COLOR BY OWNER. INTERLOCK 120V MOTOR OPERATED DAMPER W/ DRYERS. LOUVER FINISHED & INSTALLED BY MECHANICAL CONTRACTOR. ELECTRICAL CONTRACTOR TO CONNECT INTERLOCK WIRING TO DRYERS.
  - (3) 8" DRYER VENTS TO EXTERIOR. VENT ACCORDING TO MANUFACTURER'S INSTRUCTIONS. PROVIDE WALL CAPS W/ BACKDRIFT DAMPERS. (DO NOT COMBINE EXHAUST DUCTS) LOCATION OF LOWEST DUCT SHALL BE A MIN. OF 3'-0" ABOVE MOTORIZED MAKEUP AIR LOUVER.
  - 3/4" CONDENSATE LINE FROM MS-1 TO FLOOR SINK IN HVAC 117. PROVIDE CONDENSATE PUMP - LITTLE CANT EC-400 OR EQUAL.
  - 3/4" CONDENSATE LINE FROM MINI-SPLITS IN WALL TO EXTERIOR. TURN DOWN AND TERMINATE 12" A.F.G. (DO NOT DRAIN ON SIDEWALKS)
  - 1" CONDENSATE LINE FROM MINI-SPLITS ON FLOORS 2-4 DOWN IN WALL TO FLOOR SINK IN HVAC 141.

**MECHANICAL SYMBOLS LEGEND**  
 (SYMBOLS APPLY ONLY WHEN USED ON DRAWINGS)

	SQUARE CEILING SUPPLY AIR DIFFUSER		TURNING WYES
	RECTANGULAR CEILING AIR DIFFUSER		FLEXIBLE CONNECTION
	RETURN OR EXHAUST AIR GRILLE		RECTANGULAR LINEAR BALANCING DAMPER
	AIR FLOW DIRECTION		ROUND LINEAR BALANCING DAMPER
	ROOF MAKE-UP EXHAUST FAN		SPLITTER / DAMPER
	CEILING MAKE-UP EXHAUST FAN		RECTANGULAR DUCT SUPPLY/RETURN/EXHAUST AIR
	BRANCH DUCT TAKEOFF W/ MANUAL DAMPER		ROUND DUCT SUPPLY/RETURN/EXHAUST AIR
	IRON		ROUND DUCT EXHAUST AIR
	THERMOSTAT		ROUND DUCT OUTSIDE AIR
	FIRE DAMPER		CROSS-SECTION SUPPLY AIR DUCT
	COMBINATION FIRE/SMOKE DAMPER		CROSS-SECTION RETURN/EXHAUST AIR DUCT



1 Mechanical Floor Plan - First Floor  
 3/32"=1'-0"

© 2019 JOHN SANFORD ARCHITECTS. ALL RIGHTS RESERVED. THIS DOCUMENT IS THE PROPERTY OF JOHN SANFORD ARCHITECTS. ANY REPRODUCTION, DISTRIBUTION, OR DISSEMINATION OF THIS DOCUMENT WITHOUT THE WRITTEN PERMISSION OF JOHN SANFORD ARCHITECTS IS STRICTLY PROHIBITED. ALL THIRD PARTY REPRODUCERS OR DISTRIBUTORS OF THIS DOCUMENT SHALL BE RESPONSIBLE FOR OBTAINING THE NECESSARY PERMISSIONS FROM THE ORIGINAL COPYRIGHT HOLDER.