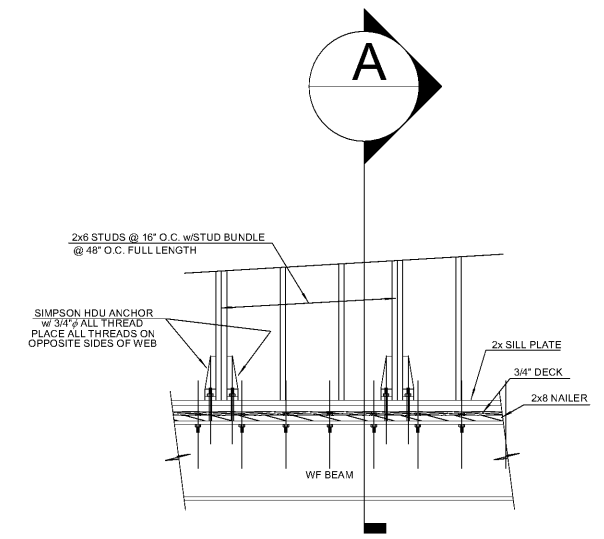
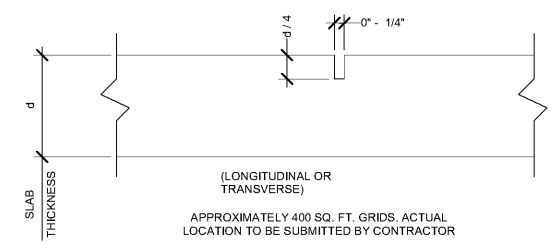


A SHEAR WALL ANCHOR TO BEAM

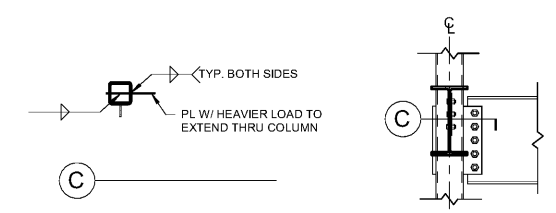


TYPICAL SHEAR WALL TO BEAM ANCHORAGE

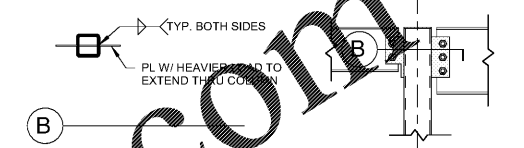
2 SHEAR WALL ANCHOR DETAILS
1/2" = 1'-0"



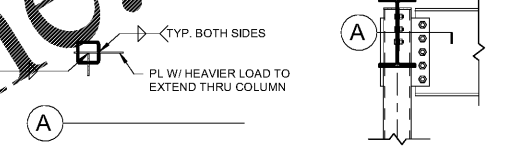
TYP. CONTROL JOINT DETAIL



C

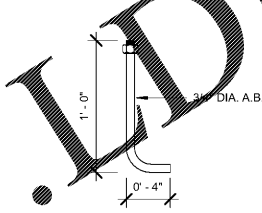


B

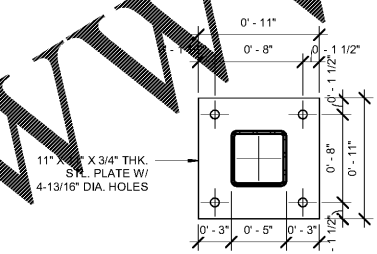


A

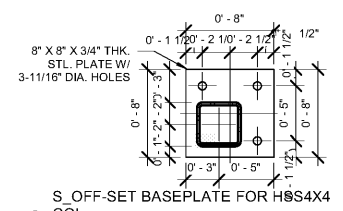
H S. SIMPLE BEAM TO COLUMN CONNECTIONS
3/4" = 1'-0"



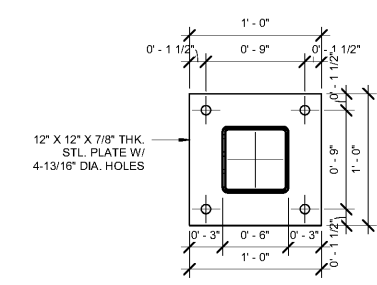
D S. TYP. ANCHOR BOLT
1 1/2" = 1'-0"



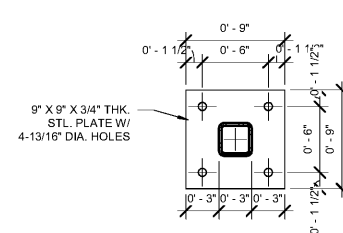
A S. BASEPLATE FOR HSS5X5 COL.
1 1/2" = 1'-0"



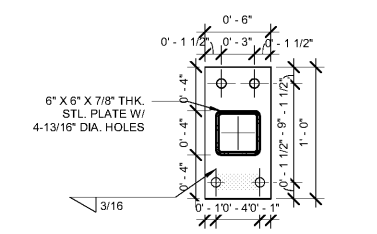
E S. OFF-SET BASEPLATE FOR HSS4X4 COL.
1 1/2" = 1'-0"



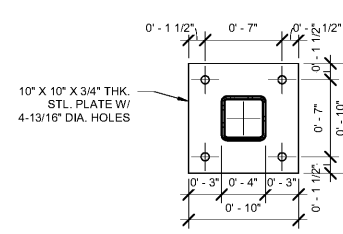
B S. BASEPLATE FOR HSS6X6 COL.
1 1/2" = 1'-0"



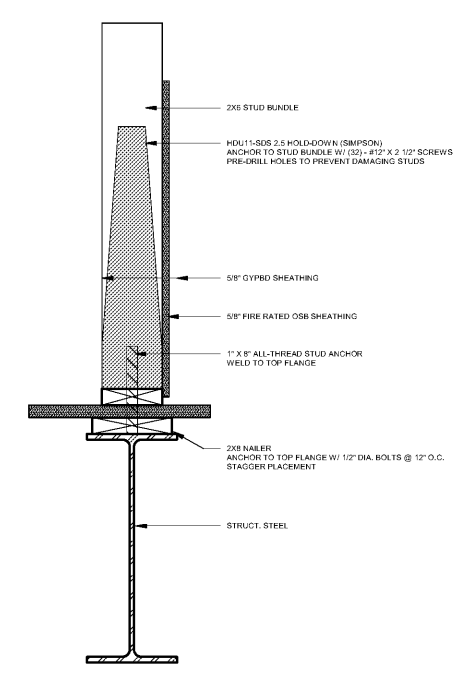
F S. BASEPLATE FOR HSS3X3 COL.
1 1/2" = 1'-0"



C S. TYP. COL. BASEPLATE AT FRAME
1 1/2" = 1'-0"



G S. BASEPLATE FOR HSS4X4 COL.
1 1/2" = 1'-0"



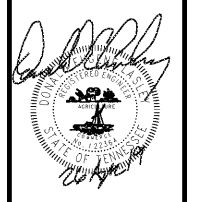
1 SHEAR WALL BEAM ANCHOR DETAIL
1 1/2" = 1'-0"

Order Plans @

THESE DRAWINGS ARE PRELIMINARY IN NATURE AND INTENDED FOR REVIEW AND PERMITTING. DRAWINGS ARE NOT TO BE USED FOR CONSTRUCTION WITHOUT ARCHITECTS AND ENGINEER'S SIGNATURE AND THEIR DATE OF ISSUE FOR CONSTRUCTION.

LASLEY ENGINEERING, P.C.
P.O. BOX 700995
TULSA, OK 74170
918.696.8925
lasleyeng@gmail.com

DONALD E. LASLEY
PE #122364



4/26/2019 8:35:05 AM
NOT VALID FOR CONSTRUCTION UNLESS SIGNED IN THIS BLOCK

PROPOSED HOLIDAY INN LI 9383
215 CRACKER BARREL DR., CLARKSVILLE
MONTGOMERY COUNTY, TENNESSEE
PERMIT NO: - - - -

No.	Description	Date

SHEET
S301
FRAMING NOTES & DETAILS