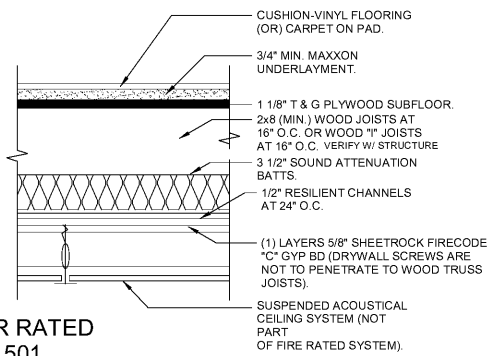


**1-HR RATED
UL 563**

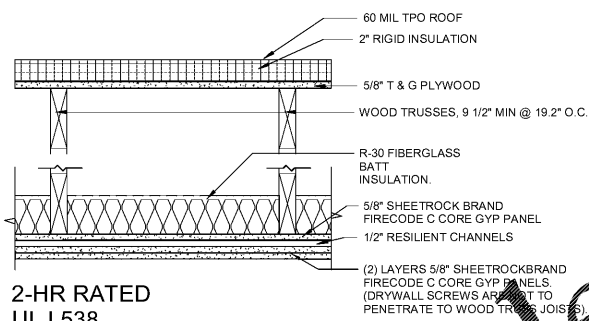
**FIRE RATING SYSTEM DESIGN - UL L563
SOUND TEST: STC 58 dB**

**CEILING ASSEMBLY - GUESTROOMS &
PUBLIC AREAS**
1 1/2" = 1'-0"



**1-HR RATED
UL L501**

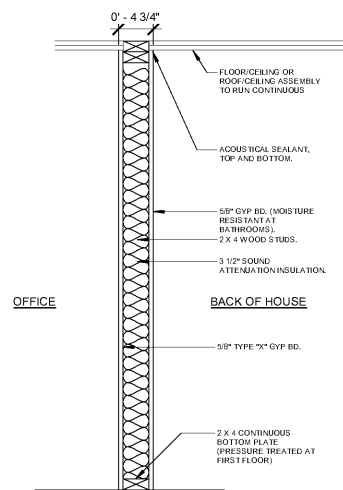
**FIRE RATING BASED ON IBC TABLE 720.1(3), ITEM
21-1.1 AND SIMILAR TO GA. FILE NO. FC 5406. "I" JOIST
DESIGN PER UL L501 WITH USE OF RC CHANNELS**
CEILING ASSEMBLY - CORRIDORS
1 1/2" = 1'-0"



**2-HR RATED
UL L538**

**BASED ON BXUV.L538 FIRE RESISTANCE
RATINGSDESIGN NO. L538.**

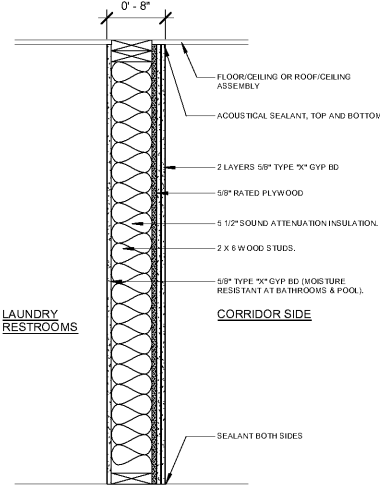
**CEILING ASSEMBLY - STAIRS &
ELEVATOR**
1 1/2" = 1'-0"



1-HR RATED

UL NO. U333
SOUND RATING: STC 39 WITH INSULATION,
STC34 WITHOUT INSULATION

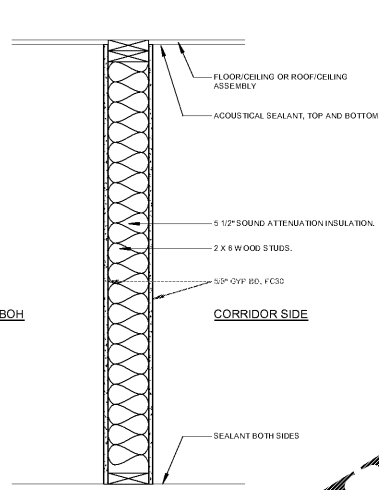
A PARTITION TYPE - A
1" = 1'-0"



**1-HR RATED
CORRIDOR**

WOOD STUDS: SH. UL NO. U311,
STC 35-54
GA FILE NO. W9241

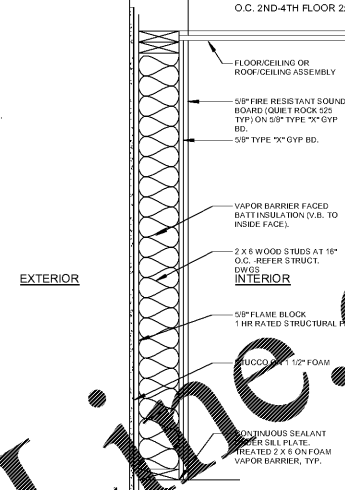
B PARTITION TYPE - B
1" = 1'-0"



**30-MIN RATED
CORRIDOR**

WOOD STUDS: SH. UL NO. U457,
STC 45

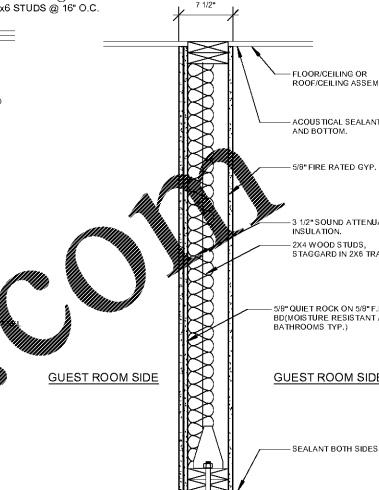
B1 PARTITION TYPE - B1
1" = 1'-0"



**1-HR RATED
EXTERIOR**

UL NO. U328
SOUND RATING: STC N/A

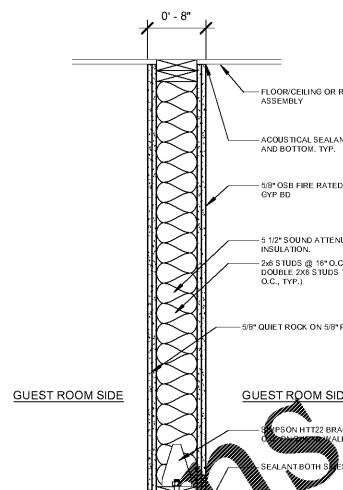
C PARTITION TYPE - C
1" = 1'-0"



**1-HR RATED
GUESTROOM**

WOOD STUDS: SH. UL NO. U313
SOUND RATING: STC 55-59
GA FILE NO. W9 310

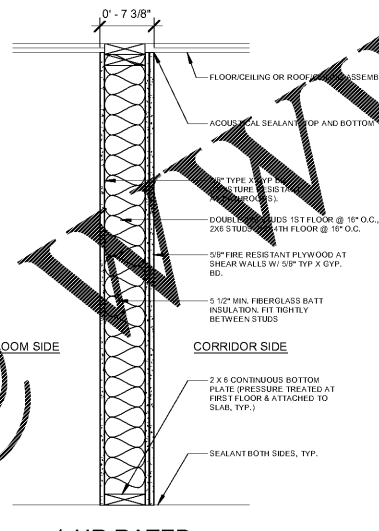
D PARTITION TYPE - D
1" = 1'-0"



**1-HR RATED SHEARWALL
GUEST ROOM**

WOOD STUDS: SH. UL NO. U313
SOUND RATING: STC 55-59
GA FILE NO. W9 310

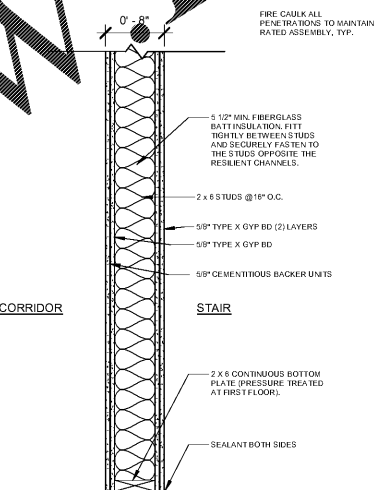
DS PARTITION TYPE - DS
1" = 1'-0"



**1-HR RATED
CORRIDOR GUEST WALL**

WOOD STUDS: UL NO. 344, STC 55 FOLLOW UL
APPROVED SCREW & NAIL PATENT, TYP.

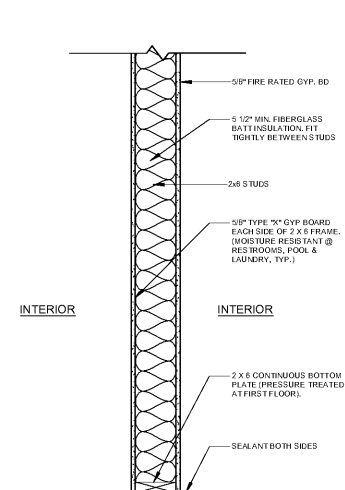
E PARTITION TYPE - E
1" = 1'-0"



**2-HR RATED
STAIR WALL**

UL NO. 383
BASED ON BXUV.U338

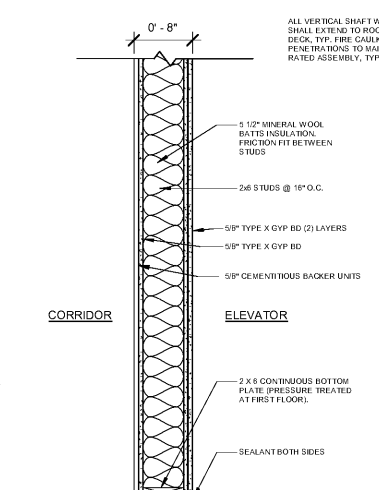
F PARTITION TYPE - F
1" = 1'-0"



**1-HR RATED
WALL**

UL 333

G PARTITION TYPE - G
1" = 1'-0"

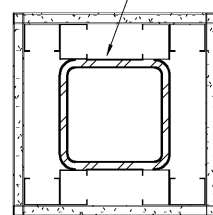


**2-HR RATED
ELEVATOR WALL**

UL NO. 263
BASED ON BXUV.U338

H PARTITION TYPE - H
1" = 1'-0"

NOTE: ALL STRUCTURAL STEEL TO BE PAINTED W/ INUMESCENT PAINT



**1-HR RATED CONSTRUCTION
UL DES X528**

4 COLUMN FIREPROOFING
3" = 1'-0"

**1 LAYER 1/2\" SHEETROCK FIRECODE
C CORE PANELS**

1-5/8\" 25 GAUGE STEEL STUDS

**NO. 28 MSG 1-1/4\" LEG CORNER BEAD
FASTENED TO WALL BOARD WITH NO.
6x1\" SCREWS**

NOTE:
WHERE FIRE RESISTANCE-RATED FLOOR OR
FLOOR/CEILING ASSEMBLIES ARE REQUIRED,
VOIDS CREATED AT THE INTERSECTION OF
THE EXTERIOR CURTAIN WALL ASSEMBLIES
AND SUCH FLOOR ASSEMBLIES SHALL BE
SEALED

NOTE:
**SMOKE/FIRE DAMPERS REQUIRED AT ALL RATED WALL &
CHASE PENETRATIONS**

MINIMUM STC RATINGS:
- MINIMUM 59 STC AT WALL AND FLOOR/CEILING ASSEMBLIES BETWEEN
THE MEETING
ROOM AND ADJACENT GUESTROOMS, FITNESS SCENTER, GUEST
LAUNDRY, AND LAUNDRY
ROOM.
- MINIMUM 55 STC AT WALL AND FLOOR/CEILING ASSEMBLIES BETWEEN
THE POOL, THE FITNESS
CENTER AND ADJACENT GUESTROOMS.
- MINIMUM 55 STC FOR ALL WALLS AT GUESTROOMS AND GUEST SUITES.
- MINIMUM 58 STC (55 IIC) AT ALL GUESTROOM FLOOR/CEILING
ASSEMBLIES
- MINIMUM 59 STC BETWEEN ELEVATOR SHAFT/ELEVATOR EQUIPMENT
ROOM AND ADJACENT GUESTROOMS.

THESE DRAWINGS ARE
PRELIMINARY IN NATURE
AND INTENDED FOR REVIEW
AND PERMITTING.
DRAWINGS ARE NOT TO BE
USED FOR CONSTRUCTION
WITHOUT ARCHITECT'S AND
ENGINEER'S SIGNATURE
AND THEIR DATE OF ISSUE
FOR CONSTRUCTION.

RECORD

**JSA
ARCHITECTS**
9726 E. 42nd St. SUITE 153
TULSA, OK 74146
918.640.6800
JHNSANFORD@AOL.COM
Copyright 2019 John Sanford
JOHN SANFORD,
AIA, NCARB
TN LICENSE #106056
4/4/2019
2:06:40 PM

John Sanford
NOT VALID FOR
CONSTRUCTION UNLESS
SIGNED IN THIS BLOCK

PROPOSED HOLIDAY INN LI 9383
215 CRACKER BARREL DR., CLARKSVILLE
MONTGOMERY COUNTY, TENNESSEE
PERMIT NO:
4/4/2019
2:06:40 PM

No.	Description	Date

SHEET
A803
INTERIOR PARTITION
TYPES