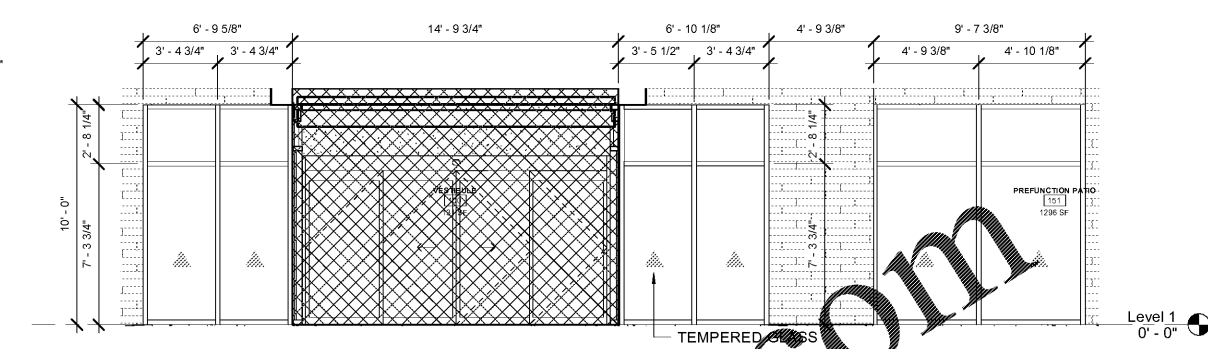
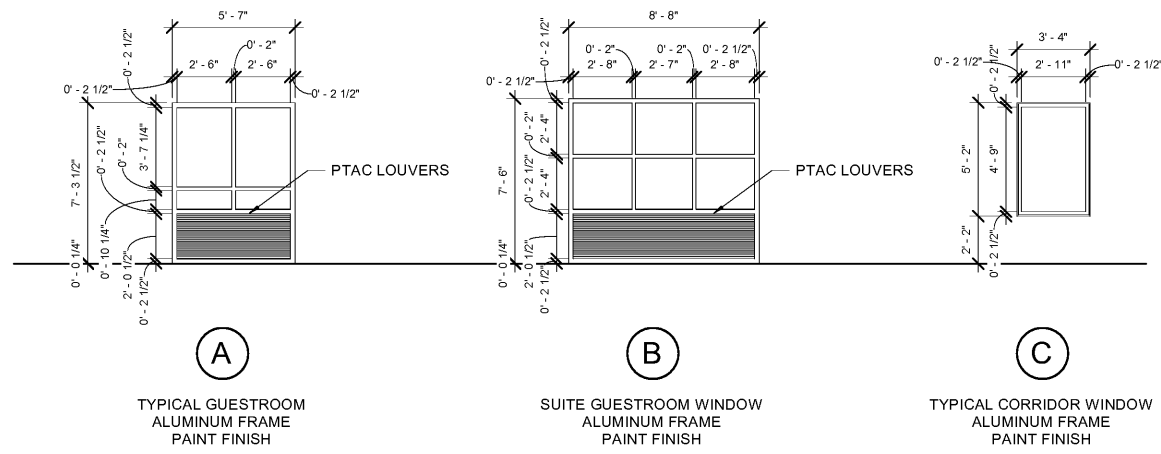
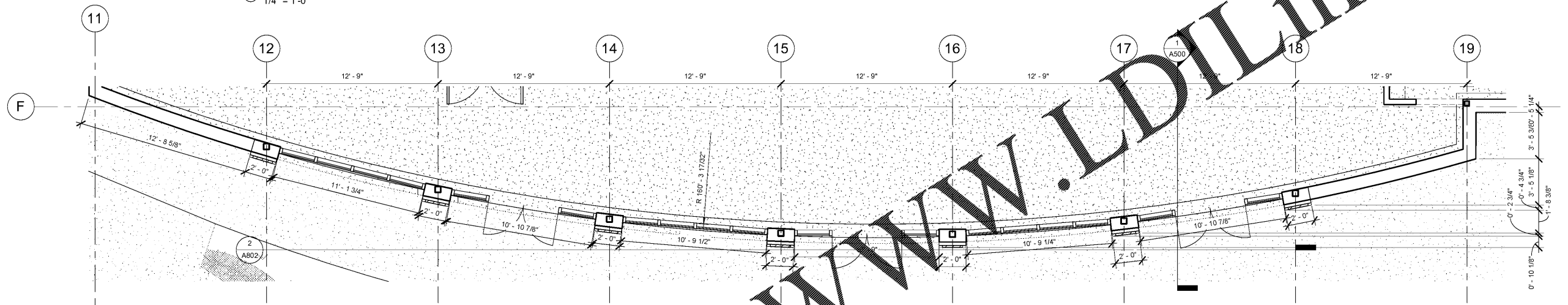


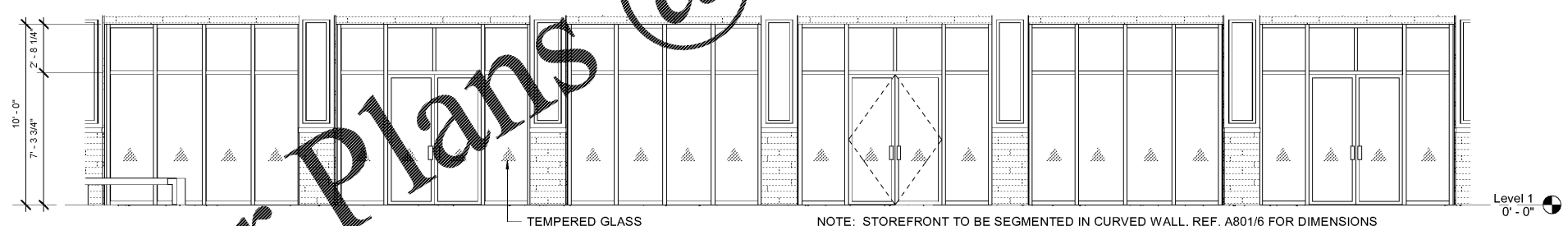
Window Schedule				
Type Mark	Width	Height	Count	Comments
Level 1				
A	5'-7"	7'-3 1/2"	3	
Level 2				
A	5'-7"	7'-3 1/2"	36	
C	3'-4"	5'-2"	2	
Level 3				
A	5'-7"	7'-3 1/2"	36	
B	8'-8"	7'-6"	2	
C	3'-4"	5'-2"	2	
Level 4				
A	5'-7"	7'-3 1/2"	37	
B	8'-8"	7'-6"	2	
C	3'-4"	5'-2"	2	



WINDOW LEGEND
1/4" = 1'-0"

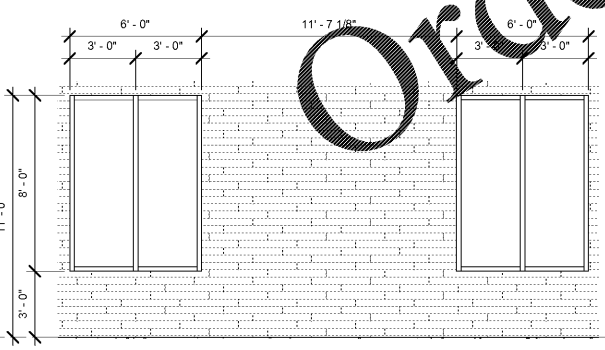


6 ENLARGED STOREFRONT
1/4" = 1'-0"

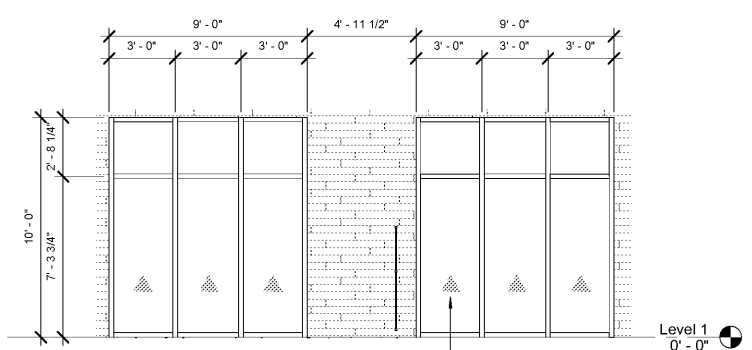


2 STOREFRONT02
1/4" = 1'-0"

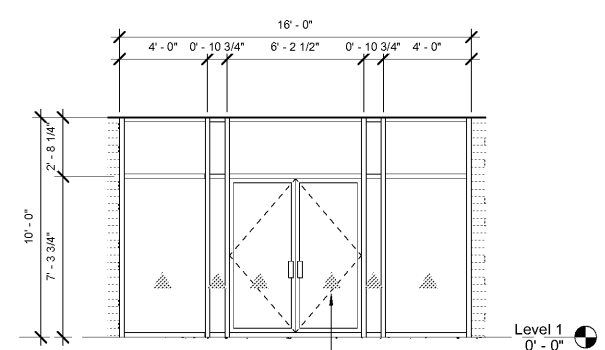
NOTE: STOREFRONT TO BE SEGMENTED IN CURVED WALL, REF. A801/6 FOR DIMENSIONS



3 STOREFRONT03
1/4" = 1'-0"



4 STOREFRONT04
1/4" = 1'-0"



5 STOREFRONT05
1/4" = 1'-0"

THESE DRAWINGS ARE PRELIMINARY IN NATURE AND INTENDED FOR REVIEW AND PERMITTING. DRAWINGS ARE NOT TO BE USED FOR CONSTRUCTION WITHOUT ARCHITECT'S AND ENGINEER'S SIGNATURE AND THEIR DATE OF ISSUE FOR CONSTRUCTION.

JSA ARCHITECTS
 9726 E. 42nd St. SUITE 153
 TULSA, OK 74146
 918.640.6800
 JHNSANFORD@AOL.COM

Copyright 2019 John Sanford
 JOHN SANFORD,
 AIA, NCARB
 TN LICENSE #106056

4/4/2019
 2:06:36 PM

NOT VALID FOR CONSTRUCTION UNLESS SIGNED IN THIS BLOCK

PROPOSED HOLIDAY INN LI 9383
 215 CRACKER BARREL DR., CLARKSVILLE
 MONTGOMERY COUNTY, TENNESSEE

PERMIT NO: -----
 4/4/2019
 2:06:36 PM

No.	Description	Date

SHEET
A802
 WINDOW SCHEDULE