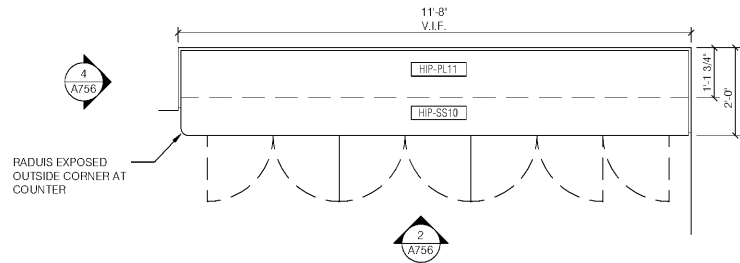
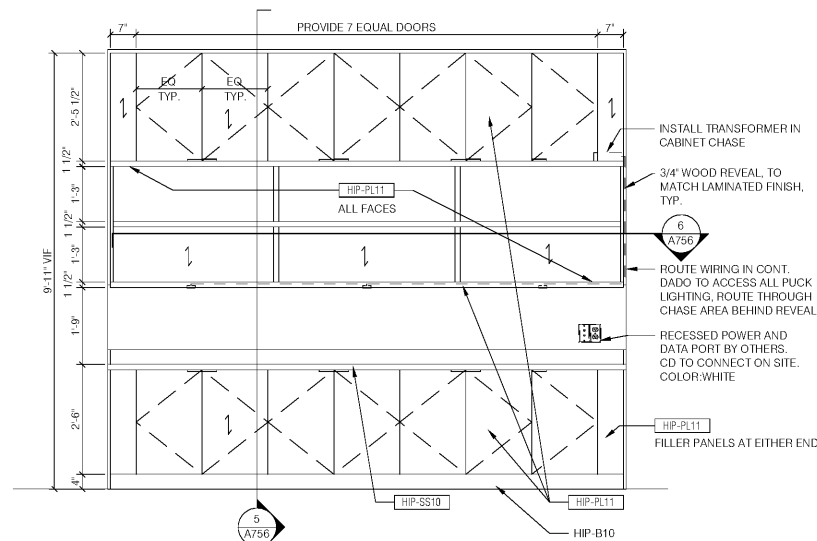


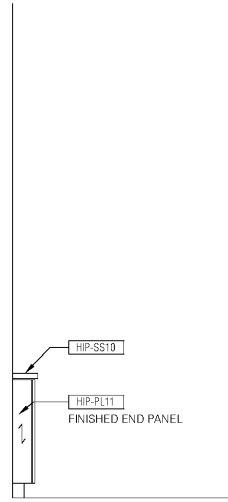
NOTE: DRAWINGS SHOW UNIT FOR PLAN EAST SIDE OF ROOM. MIRROR UNIT FOR PLAN WEST SIDE OF ROOM.



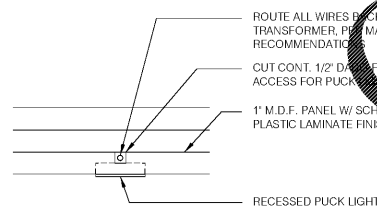
1 PLAN @ HIP-236.1.1 - MEETING ROOM MILLWORK
1/2" = 1'-0"



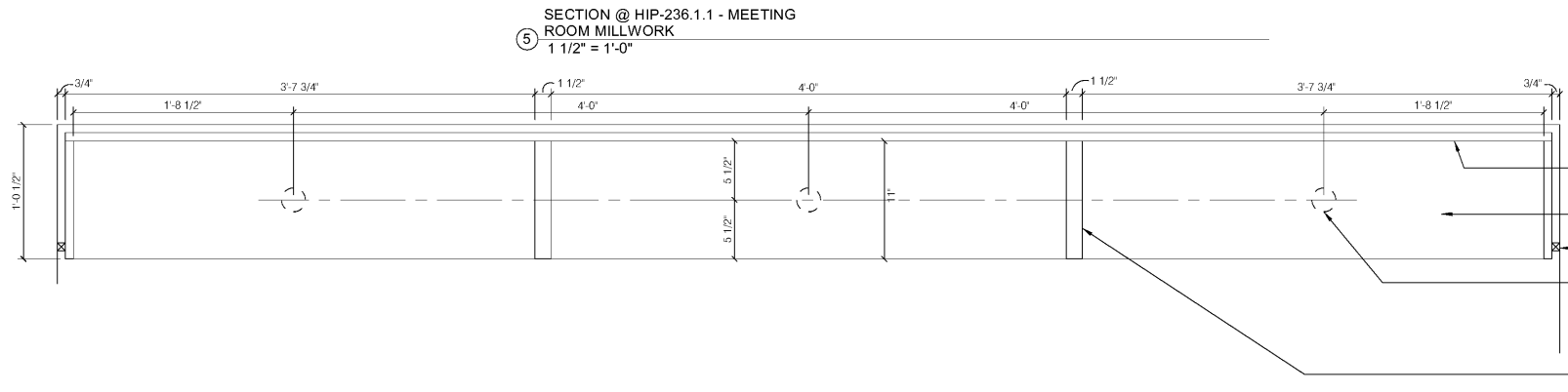
2 FRONT ELEVATION @ HIP-236.1.1 - MEETING ROOM MILLWORK
1/2" = 1'-0"



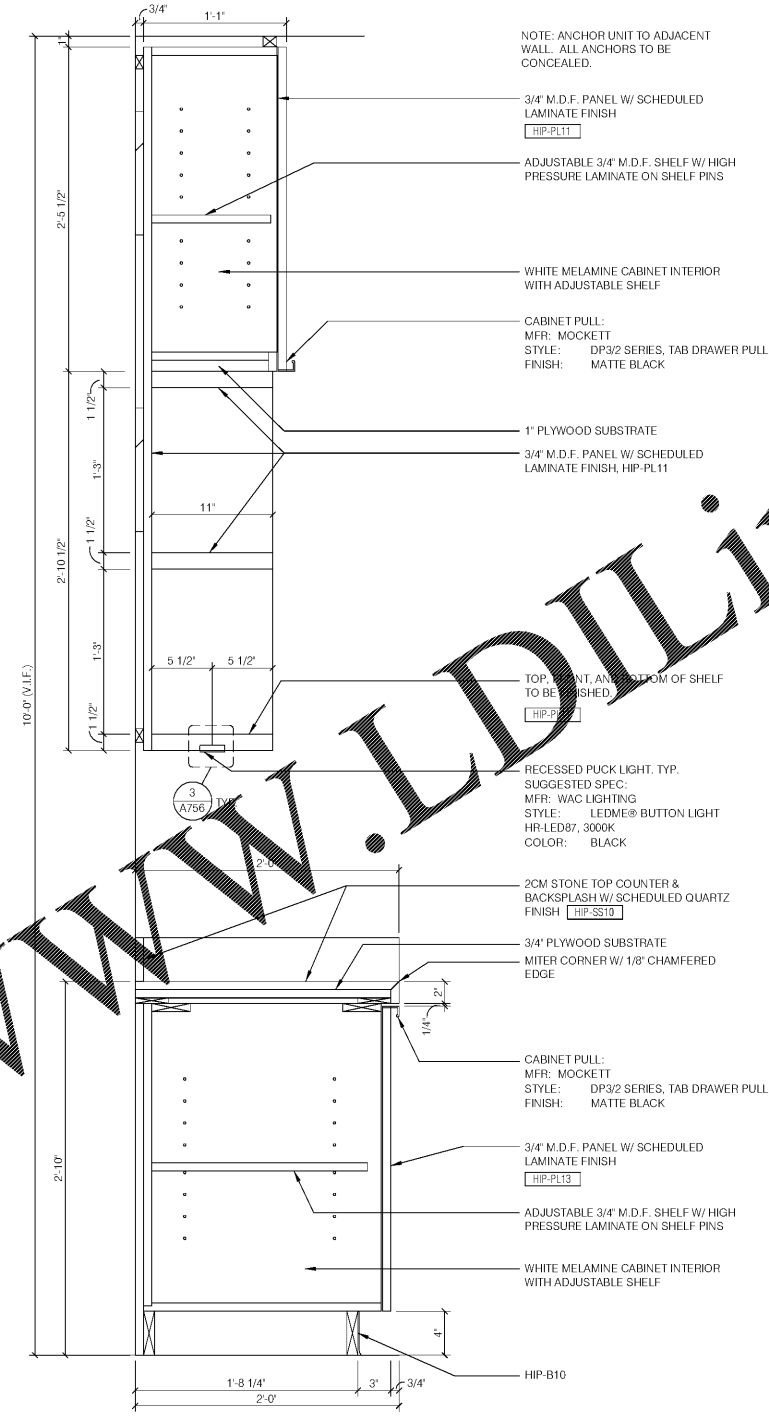
4 SIDE ELEVATION @ HIP-236.1.1 - MEETING ROOM MILLWORK
1/2" = 1'-0"



3 WIRE ACCESS @ PUCK LIGHTING
3" = 1'-0"



6 SECTION @ HIP-236.1.1 - MEETING ROOM MILLWORK
1 1/2" = 1'-0"



5 SECTION @ HIP-236.1.1 - MEETING ROOM MILLWORK
1 1/2" = 1'-0"

NOTE: ANCHOR UNIT TO ADJACENT WALL. ALL ANCHORS TO BE CONCEALED.
3/4" M.D.F. PANEL W/ SCHEDULED LAMINATE FINISH [HP-PL11]
ADJUSTABLE 3/4" M.D.F. SHELF W/ HIGH PRESSURE LAMINATE ON SHELF PINS
WHITE MELAMINE CABINET INTERIOR WITH ADJUSTABLE SHELF
CABINET PULL:
MFR: MCKEYTT
STYLE: DP3/2 SERIES, TAB DRAWER PULL
FINISH: MATTIE BLACK

1" PLYWOOD SUBSTRATE
3/4" M.D.F. PANEL W/ SCHEDULED LAMINATE FINISH, HP-PL11
TOP, FRONT, AND BOTTOM OF SHELF TO BE FINISHED.
[HP-PL13]
RECESSED PUCK LIGHT, TYP. SUGGESTED SPEC:
MFR: WAC LIGHTING
STYLE: LEDME® BUTTON LIGHT
HR-LED87, 3000K
COLOR: BLACK

2CM STONE TOP COUNTER & BACKSPLASH W/ SCHEDULED QUARTZ FINISH [HIP-SS10]
3/4" PLYWOOD SUBSTRATE
MITER CORNER W/ 1/8" CHAMFERED EDGE
CABINET PULL:
MFR: MCKEYTT
STYLE: DP3/2 SERIES, TAB DRAWER PULL
FINISH: MATTIE BLACK
3/4" M.D.F. PANEL W/ SCHEDULED LAMINATE FINISH [HP-PL13]
ADJUSTABLE 3/4" M.D.F. SHELF W/ HIGH PRESSURE LAMINATE ON SHELF PINS
WHITE MELAMINE CABINET INTERIOR WITH ADJUSTABLE SHELF
HP-B10

Order Plans @ WWW.LDILine.com

THESE DRAWINGS ARE PRELIMINARY IN NATURE AND INTENDED FOR REVIEW AND PERMITTING. DRAWINGS ARE NOT TO BE USED FOR CONSTRUCTION WITHOUT ARCHITECT'S AND ENGINEER'S SIGNATURE AND THEIR DATE OF ISSUE FOR CONSTRUCTION.
RECORD

JSA ARCHITECTS
9726 E. 42nd St. SUITE 153
TULSA, OK 74146
918.640.6800
JHNSANFORD@AOL.COM
Copyright 2019 John Sanford
JOHN SANFORD, AIA, NCARB
TN LICENSE #106056
4/4/2019 2:06:14 PM
John Sanford
NOT VALID FOR CONSTRUCTION UNLESS SIGNED IN THIS BLOCK

PROPOSED HOLIDAY INN LI 9383
215 CRACKER BARREL DR., CLARKSVILLE
MONTGOMERY COUNTY, TENNESSEE
PERMIT NO:
4/4/2019 2:06:14 PM

No.	Description	Date

SHEET
A756
MILLWORK - MEETING ROOM