

© 2019 JOHN SANFORD ARCHITECTS - ALL NAME, SPECIFICATION, COMPUTER FILE AND OTHER DOCUMENTATION PREPARED BY JOHN SANFORD ARCHITECTS ARE CONSIDERED INSTRUMENTS OF SERVICE AND SHALL REMAIN THE PROPERTY OF JOHN SANFORD ARCHITECTS. JOHN SANFORD ARCHITECTS SHALL BE RESPONSIBLE FOR THE PROTECTION, REGISTRATION AND REPRODUCTION RIGHTS PROMISED. ALL THIRD PARTY ALLEGATIONS TO INSTRUMENTS OF SERVICE BEING BY JOHN SANFORD ARCHITECTS.

THESE DRAWINGS ARE PRELIMINARY IN NATURE AND INTENDED FOR REVIEW AND PERMITTING. DRAWINGS ARE NOT TO BE USED FOR CONSTRUCTION WITHOUT ARCHITECT'S AND ENGINEER'S SIGNATURE AND THEIR DATE OF ISSUE FOR CONSTRUCTION.

RECORD

**JSA**  
 ARCHITECTS  
 9726 E. 42nd St. SUITE 153  
 TULSA, OK 74146  
 918.640.6800  
 JHNSANFORD@AOL.COM

Copyright 2019 John Sanford  
 JOHN SANFORD,  
 AIA, NCARB  
 TN LICENSE #106056

4/4/2019  
 2:05:40 PM

NOT VALID FOR CONSTRUCTION UNLESS SIGNED IN THIS BLOCK

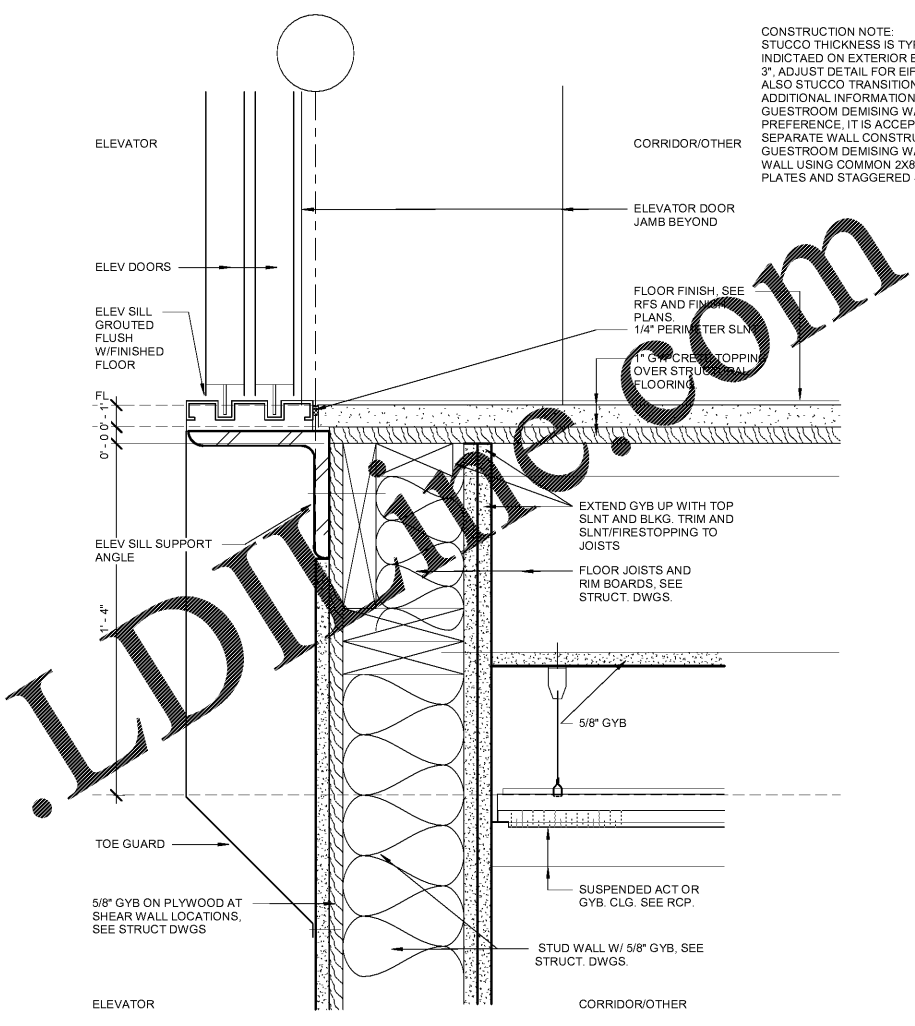
**PROPOSED HOLIDAY INN LI 9383**  
 215 CRACKER BARREL DR., CLARKSVILLE  
 MONTGOMERY COUNTY, TENNESSEE

PERMIT NO: .....  
 4/4/2019  
 2:05:40 PM

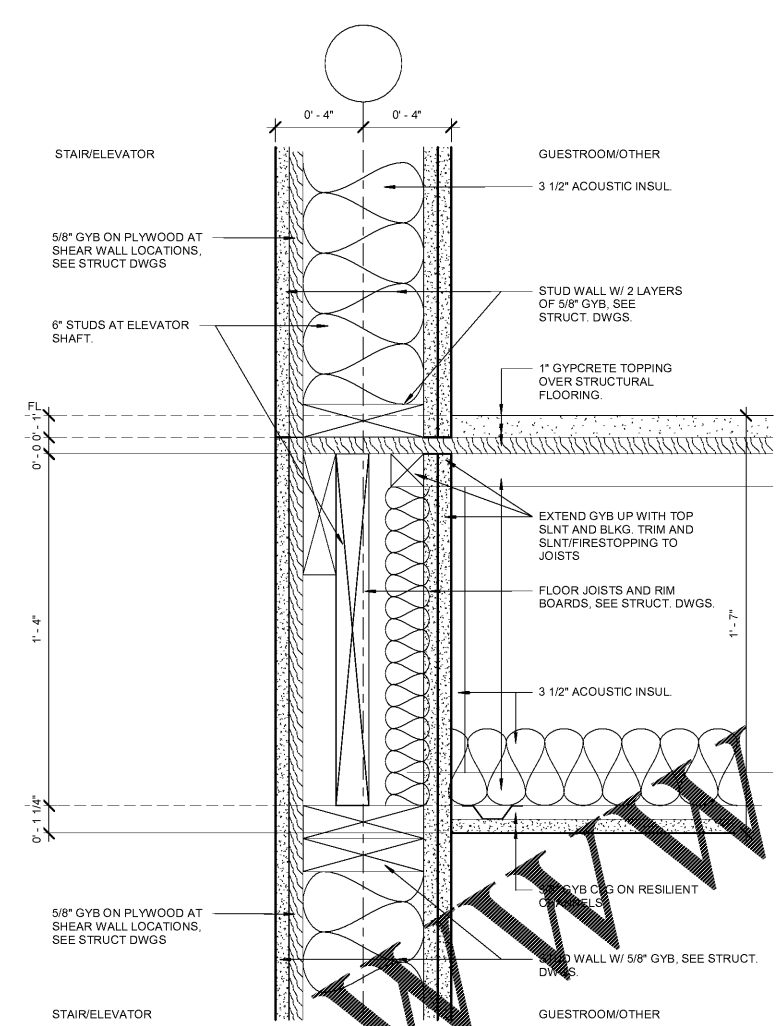
No.	Description	Date

SHEET  
**A708**  
 CONSTRUCTION  
 DETAILS

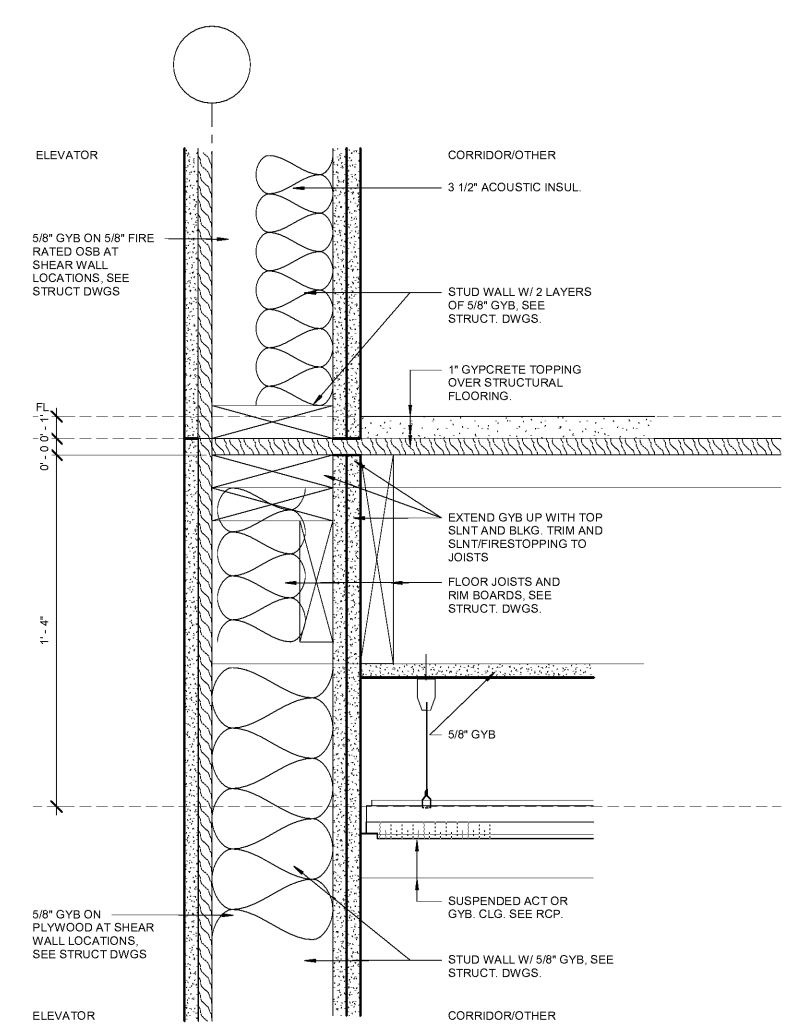
**CONSTRUCTION NOTE:**  
 STUCCO THICKNESS IS TYPICALLY 1 3/4". WHERE INDICATED ON EXTERIOR ELEVATION AS STUCCO 3". ADJUST DETAIL FOR EIFS THICKNESS 3 1/4". SEE ALSO STUCCO TRANSITION DETAILS FOR ADDITIONAL INFORMATION.  
 GUESTROOM DEMISING WALL REGIONAL PREFERENCE. IT IS ACCEPTABLE TO REPLACE THE SEPARATE WALL CONSTRUCTION FOR THE GUESTROOM DEMISING WALL WITH THE A SINGLE WALL USING COMMON 2X8 TOP AND BOTTOM PLATES AND STAGGERED STUDS.



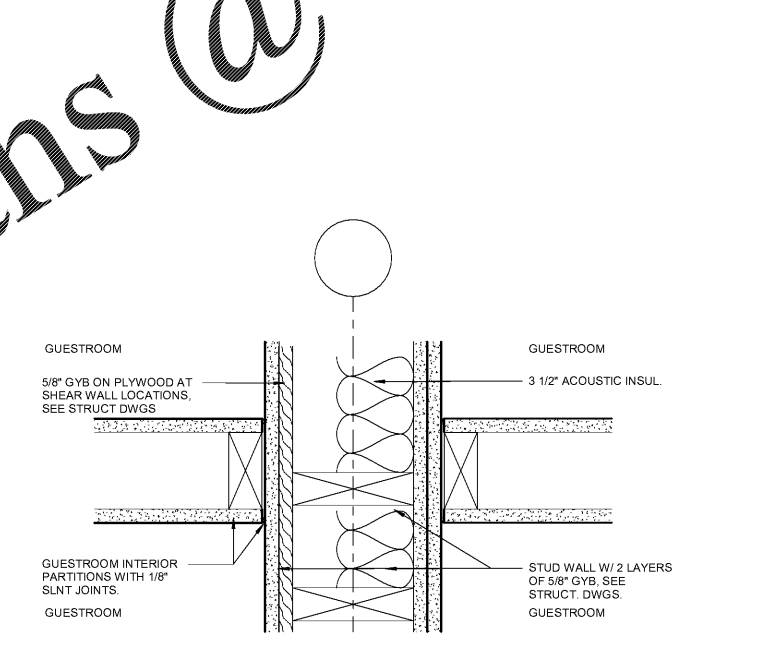
③ INTERIOR WALL/FLOOR TYPICAL ELEVATOR SILL  
 3" = 1'-0"



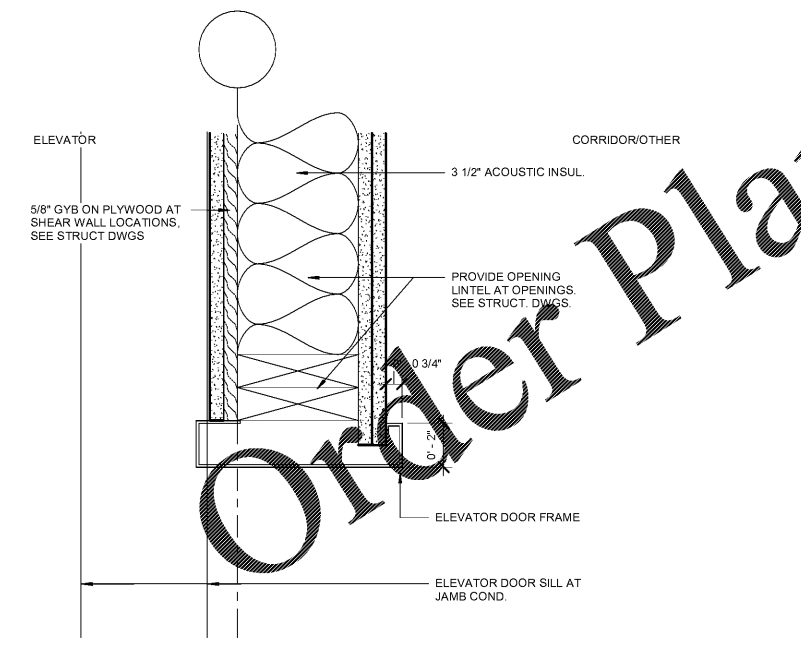
② INTERIOR WALL/FLOOR TYPICAL ELEVATOR/STAIR  
 3" = 1'-0"



① INTERIOR WALL/FLOOR TYPICAL ELEVATOR/CORRIDOR  
 3" = 1'-0"



⑤ INTERIOR WALL TYPICAL WALL INTERSECTION  
 3" = 1'-0"



④ INTERIOR WALL TYPICAL ELEVATOR JAMB/HEAD  
 3" = 1'-0"

Order Plans @

WWW.LDILINE.COM