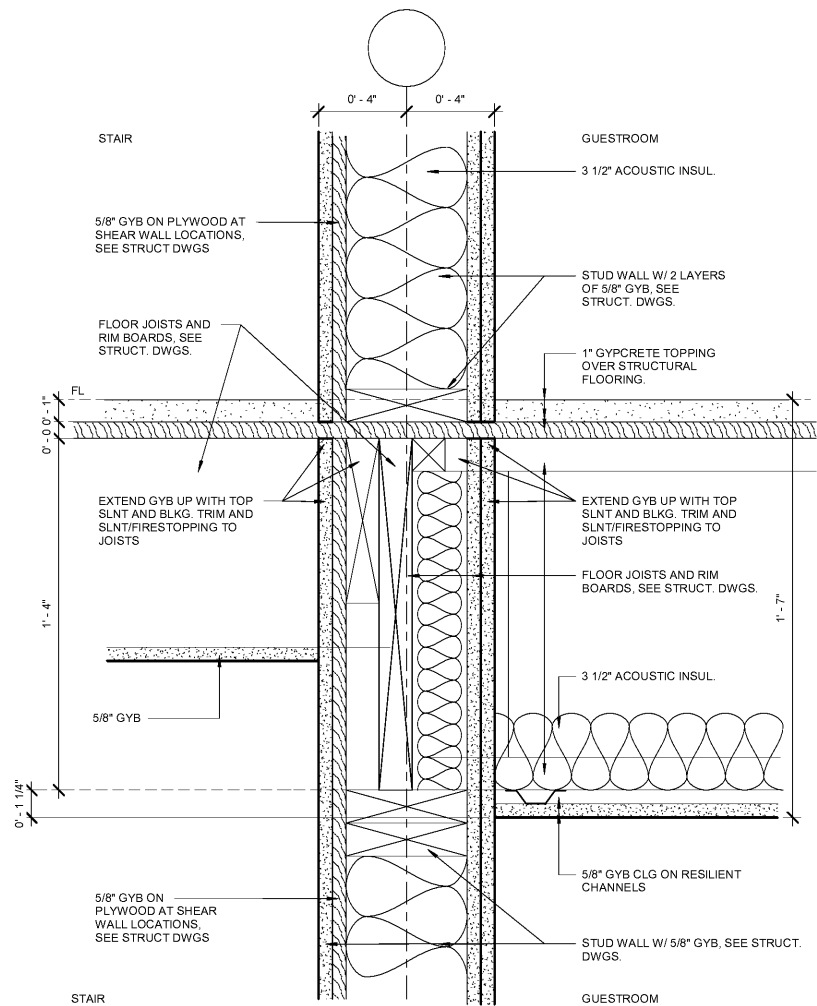
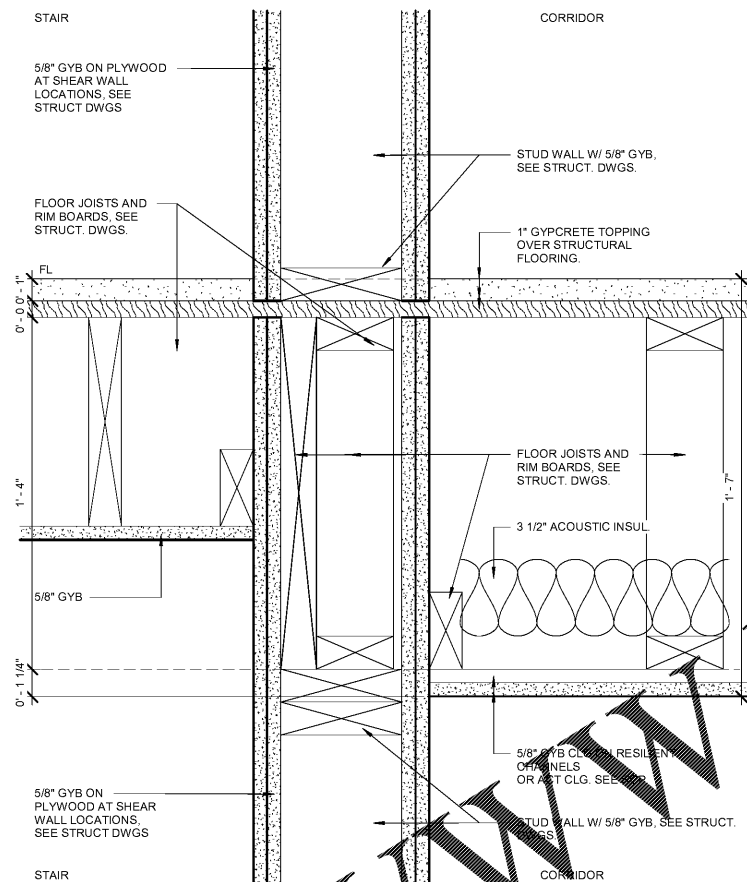


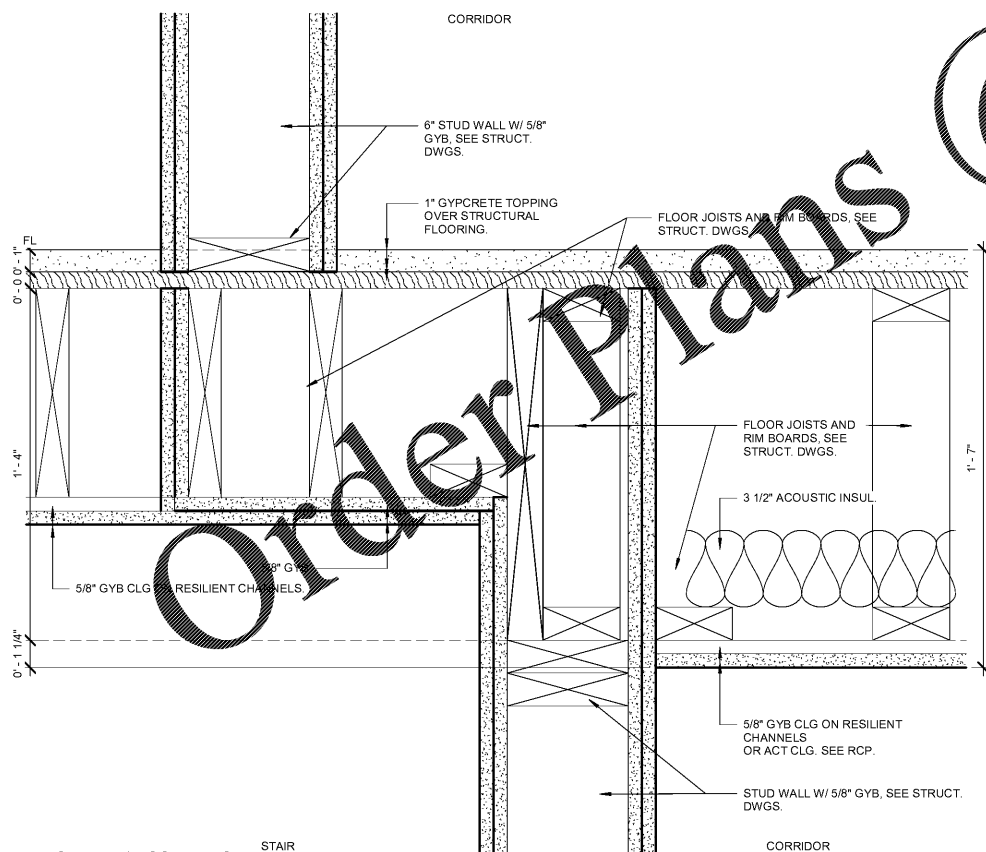
© 2019 JOHN SANFORD ARCHITECTS. ALL RIGHTS RESERVED. REPRODUCTION OR TRANSMISSION IN ANY FORM OR BY ANY MEANS, WITHOUT PERMISSION IS PROHIBITED. ALL DIMENSIONS ARE TO FACE UNLESS OTHERWISE NOTED. ALL DIMENSIONS ARE TO FACE UNLESS OTHERWISE NOTED. ALL DIMENSIONS ARE TO FACE UNLESS OTHERWISE NOTED.



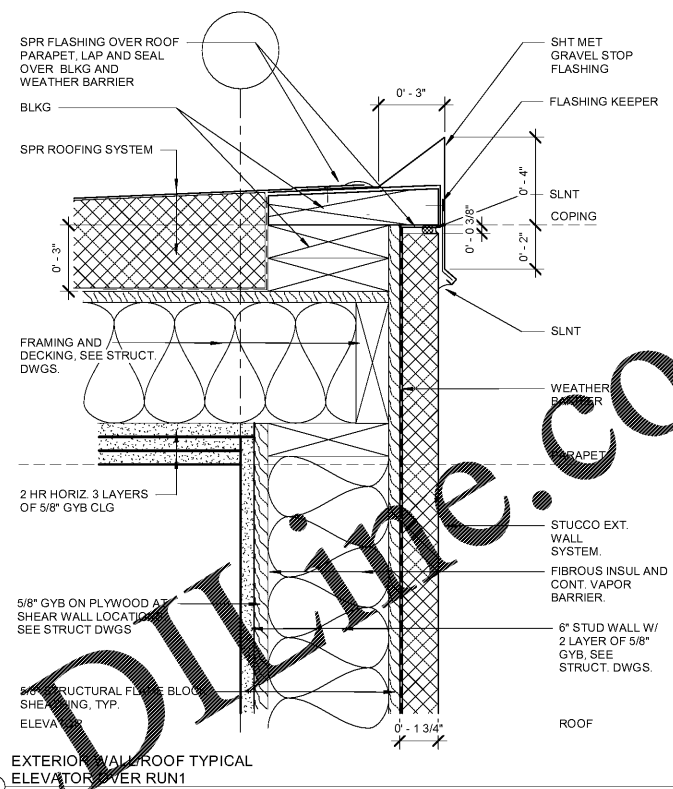
① INTERIOR WALL/FLOOR TYPICAL
GUESTROOM/STAIR1
3" = 1'-0"



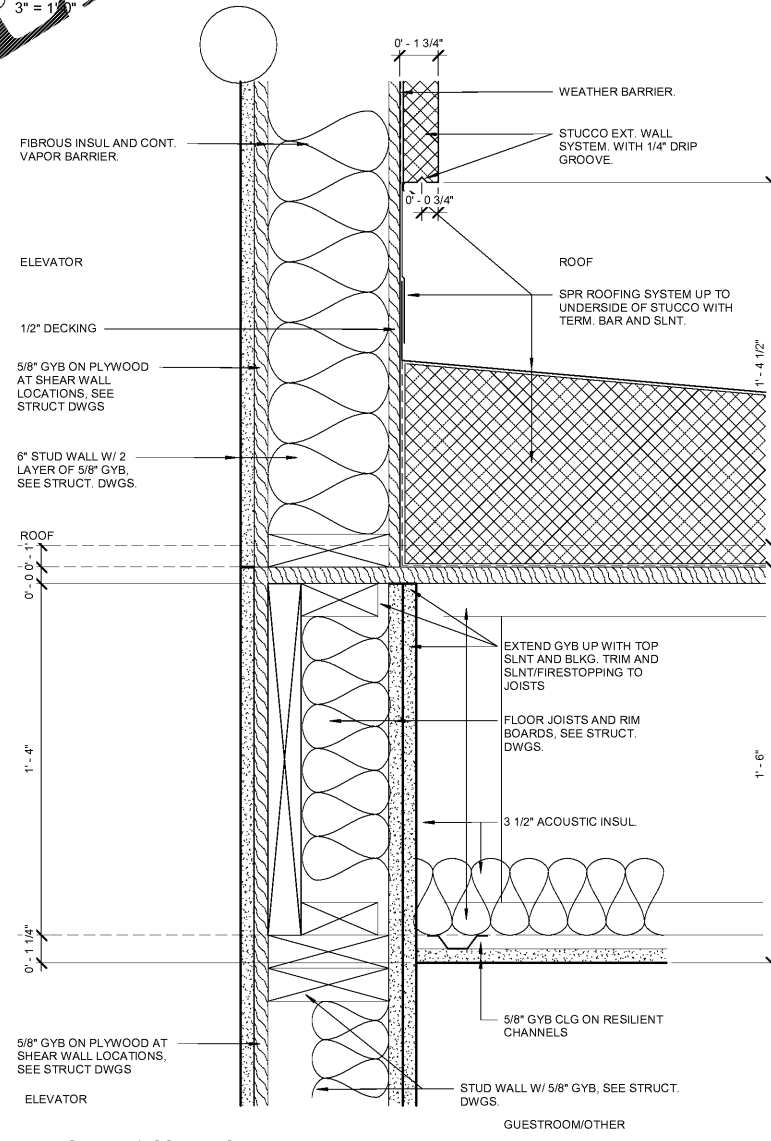
② INTERIOR WALL/FLOOR TYPICAL
STAIR/CORRIDOR1
3" = 1'-0"



③ INTERIOR WALL/FLOOR TYPICAL
STAIR/CORRIDOR OFFSET1
3" = 1'-0"



④ EXTERIOR WALL/ROOF TYPICAL
ELEVATOR OVER RUN1
3" = 1'-0"



⑤ EXTERIOR WALL/ROOF TYPICAL
ELEVATOR1
3" = 1'-0"

CONSTRUCTION NOTE:
STUCCO THICKNESS IS TYPICALLY 1 3/4". WHERE
INDICATED ON EXTERIOR ELEVATION AS STUCCO
3". ADJUST DETAIL FOR EIFS THICKNESS 3 1/4". SEE
ALSO STUCCO TRANSITION DETAILS FOR
ADDITIONAL INFORMATION.
GUESTROOM DEMISING WALL REGIONAL
PREFERENCE, IT IS ACCEPTABLE TO REPLACE THE
SEPARATE WALL CONSTRUCTION FOR THE
GUESTROOM DEMISING WALL WITH THE A SINGLE
WALL USING COMMON 2X8 TOP AND BOTTOM
PLATES AND STAGGERED STUDS.

THESE DRAWINGS ARE
PRELIMINARY IN NATURE
AND INTENDED FOR REVIEW
AND PERMITTING.
DRAWINGS ARE NOT TO BE
USED FOR CONSTRUCTION
WITHOUT ARCHITECT'S AND
ENGINEER'S SIGNATURE
AND THEIR DATE OF ISSUE
FOR CONSTRUCTION.

JSA
ARCHITECTS

9726 E. 42nd St. SUITE 153
TULSA, OK 74146
918.640.6800
JHNSANFORD@AOL.COM

Copyright 2019 John Sanford

JOHN SANFORD,
AIA, NCARB
TN LICENSE #106056

4/4/2019
2:05:30 PM

John Sanford

NOT VALID FOR
CONSTRUCTION UNLESS
SIGNED IN THIS BLOCK

PROPOSED HOLIDAY INN LI 9383
215 CRACKER BARREL DR., CLARKSVILLE
MONTGOMERY COUNTY, TENNESSEE

PERMIT NO:

4/4/2019
2:05:30 PM

No.	Description	Date

SHEET

A705
CONSTRUCTION
DETAILS