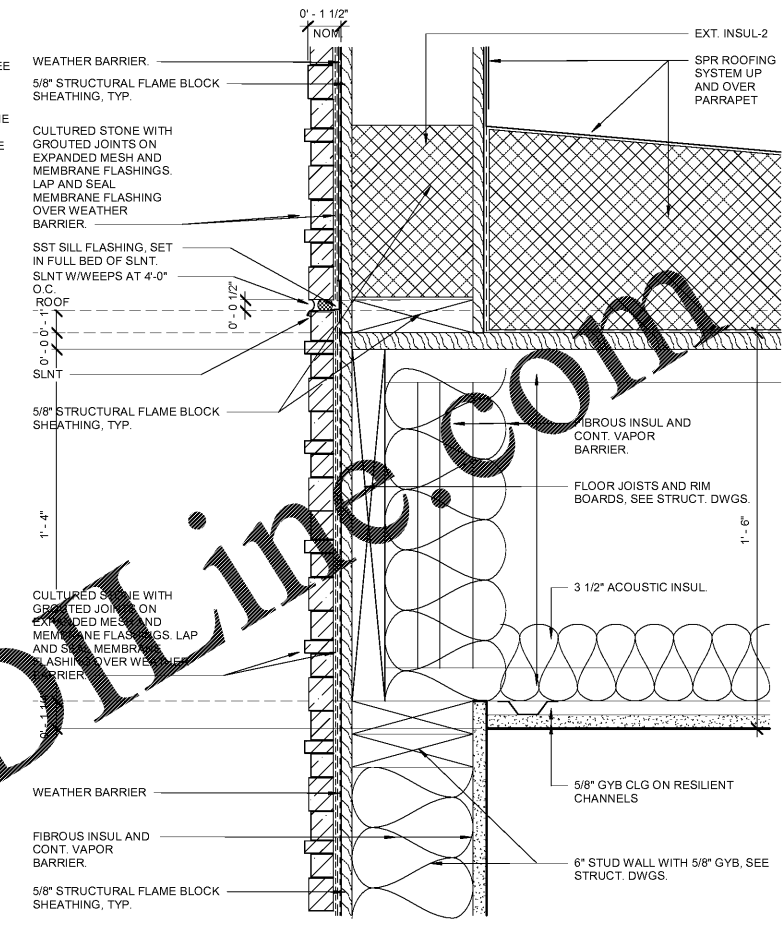


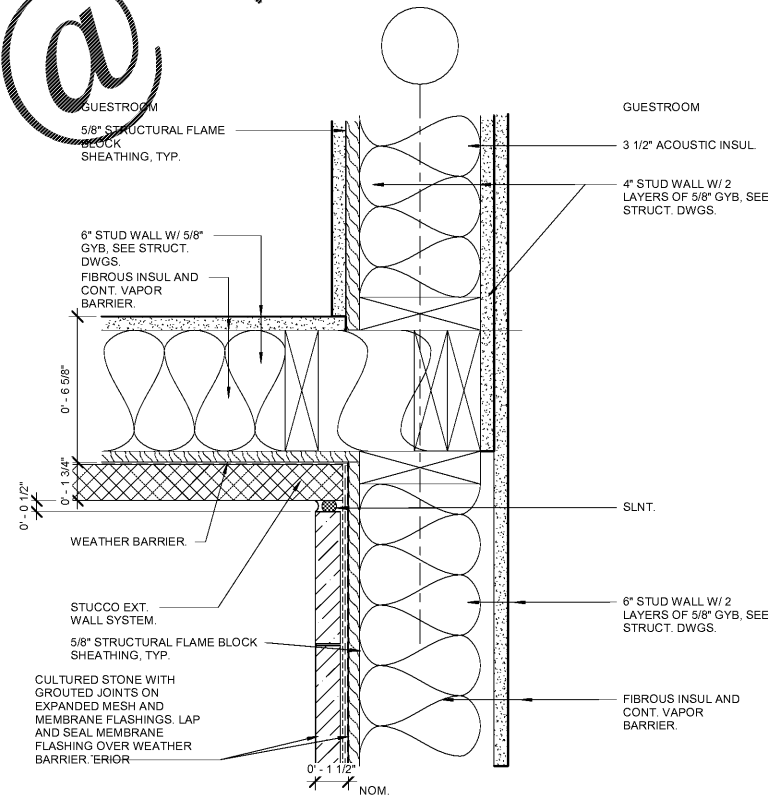
© 2019 JOHN SANFORD ARCHITECTS. ALL RIGHTS RESERVED. REPRODUCTION OR DISTRIBUTION OF THESE DRAWINGS WITHOUT WRITTEN PERMISSION IS PROHIBITED. ALL DIMENSIONS ARE TO UNLESS OTHERWISE NOTED. ANY REVISIONS TO THESE DRAWINGS SHALL BE INDICATED BY A REVISION CIRCLE AND NUMBER. THE COPYRIGHT HEREIN IS THE PROPERTY OF JOHN SANFORD ARCHITECTS. JOHN SANFORD ARCHITECTS SHALL REMAIN THE DESIGNER OF RECORD FOR THESE DRAWINGS. ANY REVISIONS TO THESE DRAWINGS SHALL BE INDICATED BY A REVISION CIRCLE AND NUMBER. THE COPYRIGHT HEREIN IS THE PROPERTY OF JOHN SANFORD ARCHITECTS. JOHN SANFORD ARCHITECTS SHALL REMAIN THE DESIGNER OF RECORD FOR THESE DRAWINGS. ANY REVISIONS TO THESE DRAWINGS SHALL BE INDICATED BY A REVISION CIRCLE AND NUMBER.

Order Plans @ WWW.LDMLINE.COM

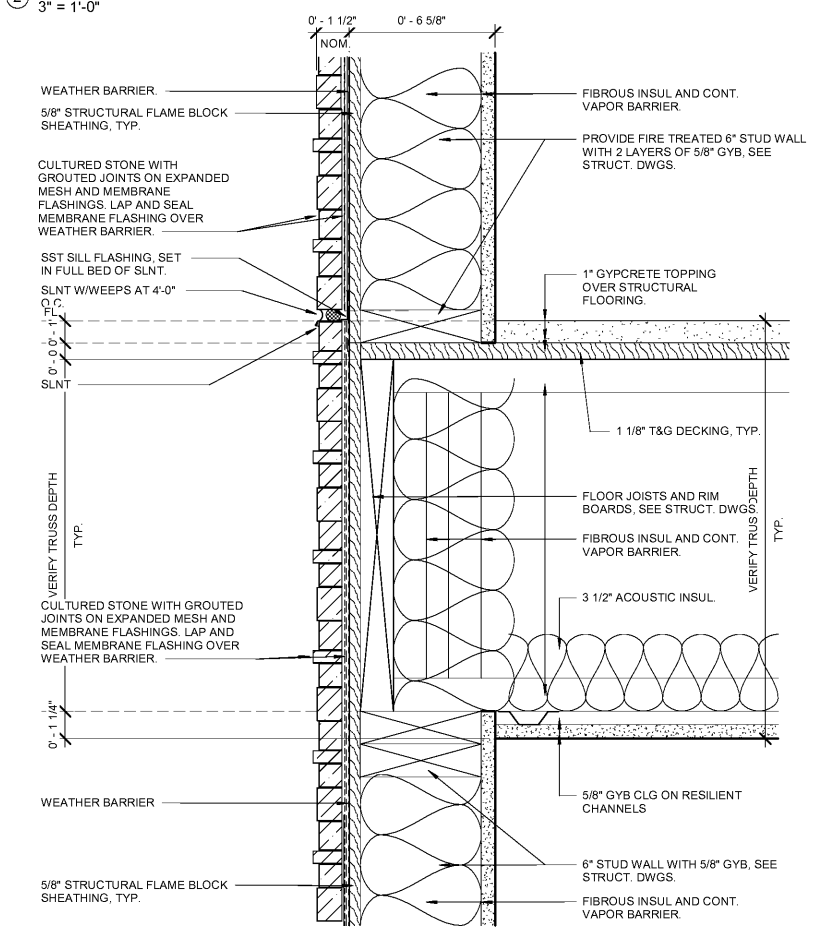
CONSTRUCTION NOTE:
 STUCCO THICKNESS IS TYPICALLY 1 3/4". WHERE INDICATED ON EXTERIOR ELEVATION AS STUCCO 3" ADJUST DETAIL FOR EIFS THICKNESS 3 1/4". SEE ALSO STUCCO TRANSITION DETAILS FOR ADDITIONAL INFORMATION.
 GUESTROOM DEMISING WALL REGIONAL PREFERENCE, IT IS ACCEPTABLE TO REPLACE THE SEPARATE WALL CONSTRUCTION FOR THE GUESTROOM DEMISING WALL WITH THE A SINGLE WALL USING COMMON 2X8 TOP AND BOTTOM PLATES AND STAGGERED STUDS.



2 EXTERIOR WALL/ROOF PARAPET
 TYPICAL LOAD BEARING1
 3" = 1'-0"



4 EXTERIOR/INTERIOR WALL TYPICAL
 INTERSECTION AT STONE CORNER1
 3" = 1'-0"



3 EXTERIOR WALL/FLOOR W/STONE
 TYPICAL LOAD BEARING1
 3" = 1'-0"

THESE DRAWINGS ARE PRELIMINARY IN NATURE AND INTENDED FOR REVIEW AND PERMITTING. DRAWINGS ARE NOT TO BE USED FOR CONSTRUCTION WITHOUT ARCHITECT'S AND ENGINEER'S SIGNATURE AND THEIR DATE OF ISSUE FOR CONSTRUCTION.

RECORD

JSA
 ARCHITECTS

9726 E. 42nd St. SUITE 153
 TULSA, OK 74146
 918.640.6800
 JHNSANFORD@AOL.COM

Copyright 2019 John Sanford

JOHN SANFORD,
 AIA, NCARB
 TN LICENSE #106056

4/4/2019 2:05:18 PM



John Sanford

NOT VALID FOR CONSTRUCTION UNLESS SIGNED IN THIS BLOCK

PROPOSED HOLIDAY INN LI 9383
 215 CRACKER BARREL DR., CLARKSVILLE
 MONTGOMERY COUNTY, TENNESSEE

PERMIT NO:
 4/4/2019
 2:05:18 PM

No.	Description	Date

SHEET

A702
 CONSTRUCTION
 DETAILS