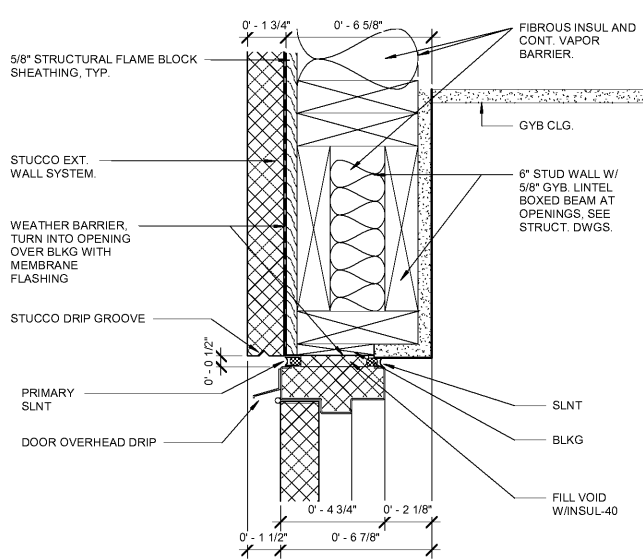
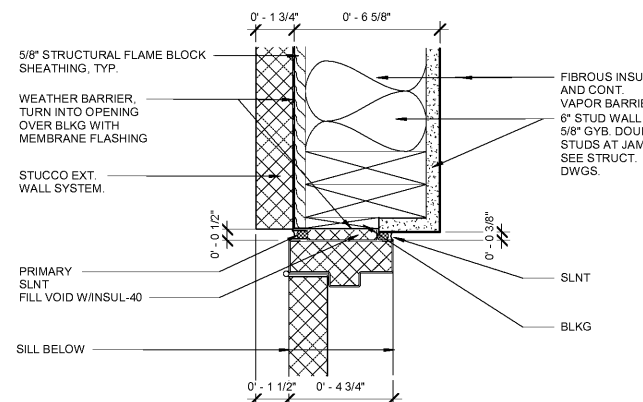


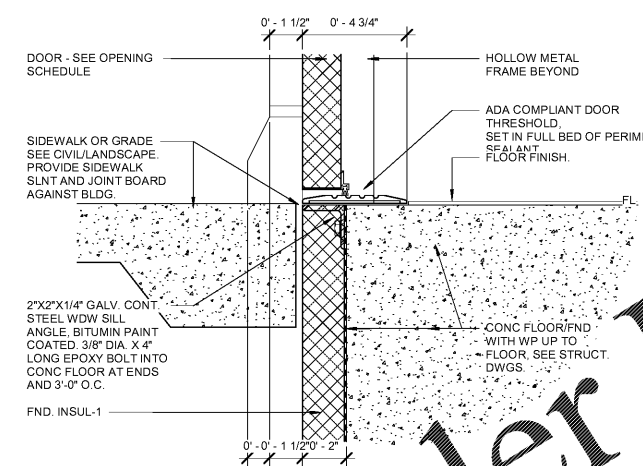
© 2018 JOHN SANFORD ARCHITECTS. ALL RIGHTS RESERVED. REPRODUCTION OR TRANSMISSION IN ANY FORM OR BY ANY MEANS, WITHOUT WRITTEN PERMISSION IS PROHIBITED. ALL DIMENSIONS ARE TO FACE UNLESS OTHERWISE NOTED. ALL DIMENSIONS ARE TO FACE UNLESS OTHERWISE NOTED. ALL DIMENSIONS ARE TO FACE UNLESS OTHERWISE NOTED. ALL DIMENSIONS ARE TO FACE UNLESS OTHERWISE NOTED.



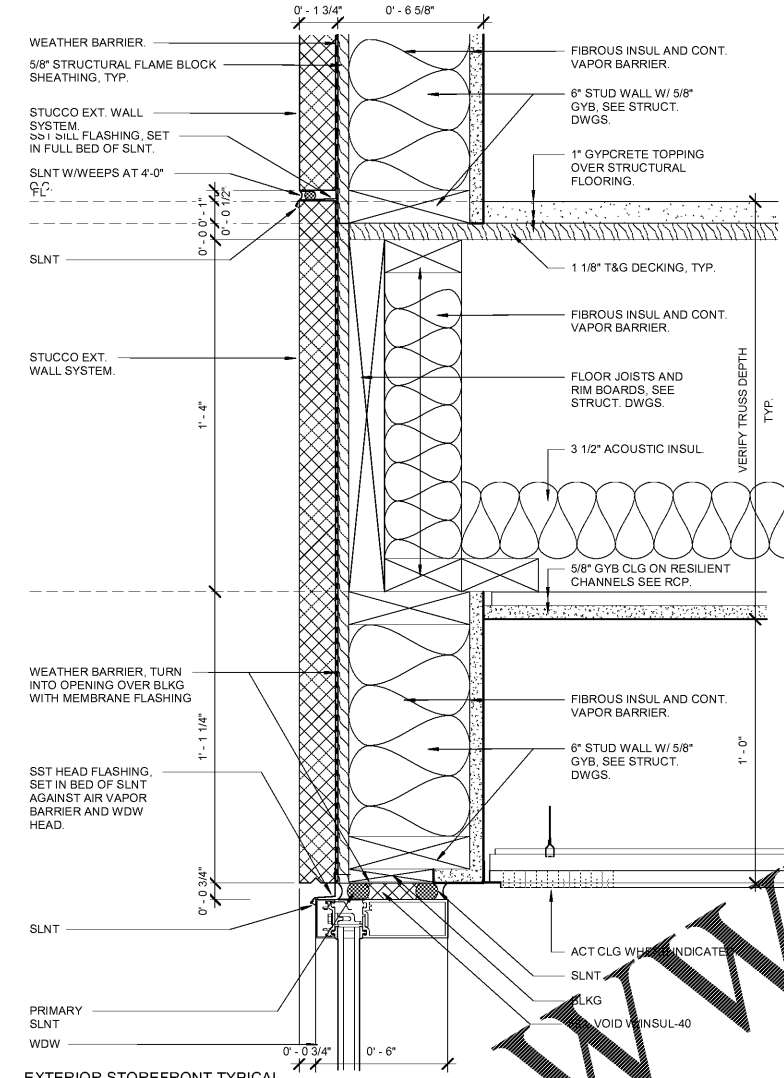
1 EXTERIOR DOOR TYPICAL HEAD1
3" = 1'-0"



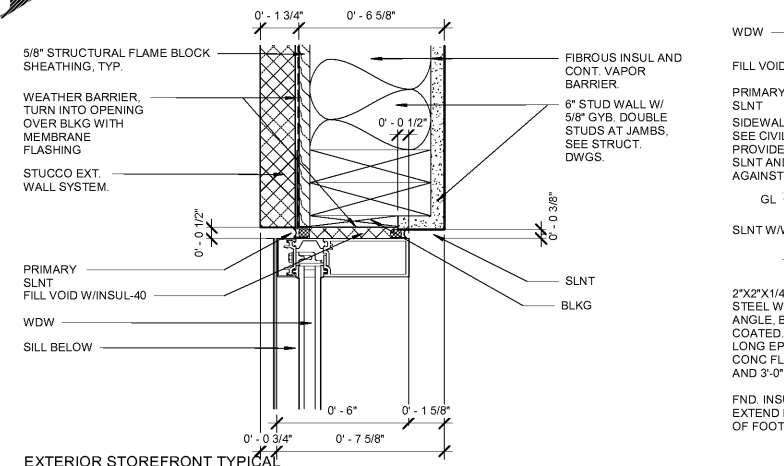
2 EXTERIOR DOOR TYPICAL JAMB1
3" = 1'-0"



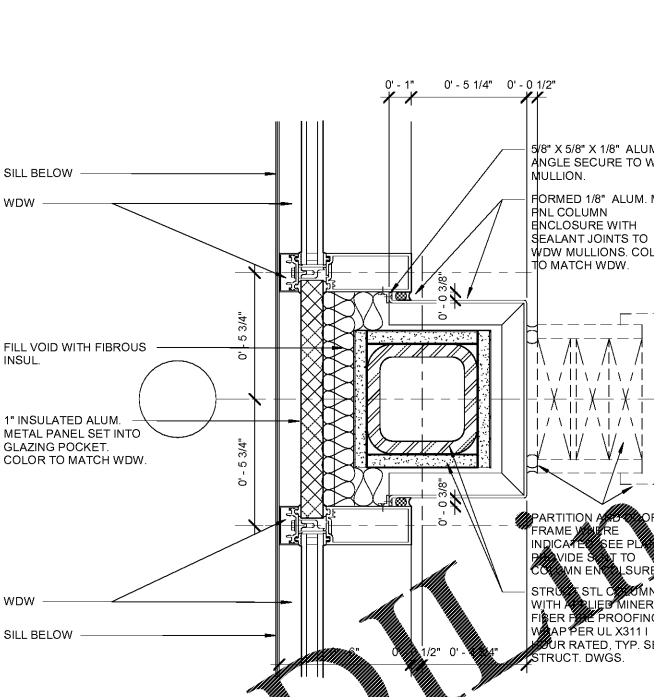
3 EXTERIOR DOOR TYPICAL SILL1
3" = 1'-0"



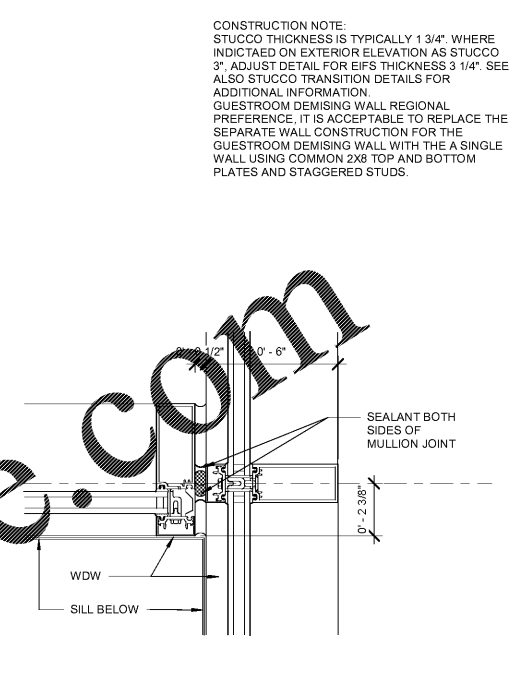
4 EXTERIOR STOREFRONT TYPICAL HEAD1
3" = 1'-0"



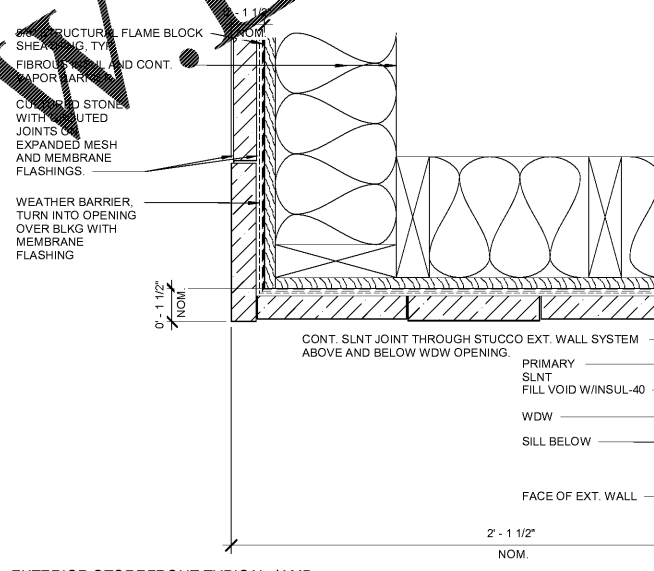
5 EXTERIOR STOREFRONT TYPICAL JAMB1
3" = 1'-0"



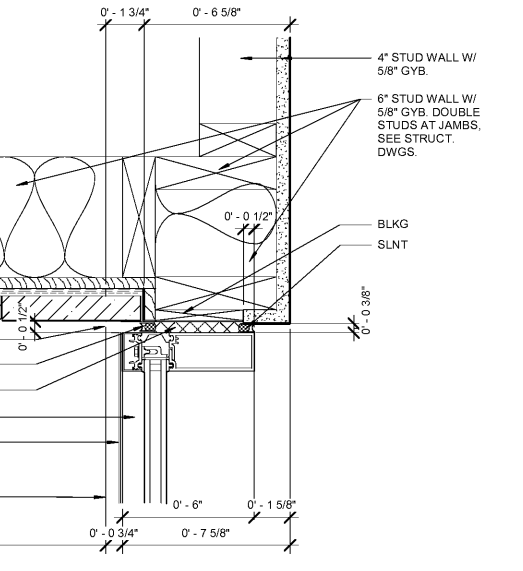
9 EXTERIOR STOREFRONT TYPICAL JAMB AT COLUMN1
3" = 1'-0"



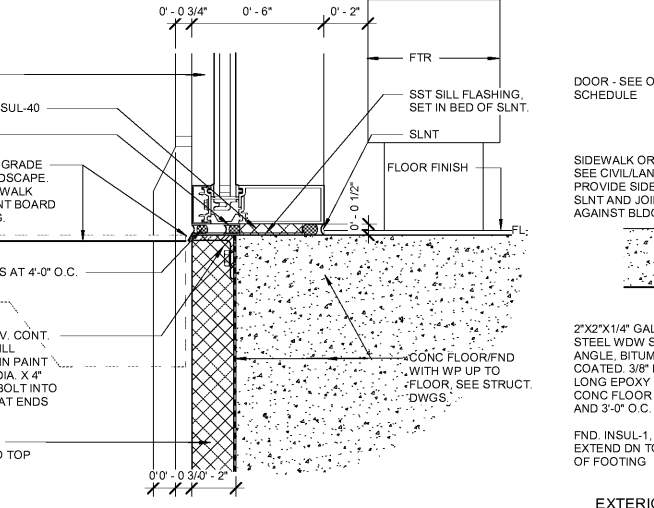
10 EXTERIOR STOREFRONT TYPICAL JAMB AT INSIDE CORNER1
3" = 1'-0"



7 EXTERIOR STOREFRONT TYPICAL JAMB OFFSET1
3" = 1'-0"



8 EXTERIOR STOREFRONT TYPICAL DOOR SILL1
3" = 1'-0"



6 EXTERIOR STOREFRONT TYPICAL SILL1
3" = 1'-0"

CONSTRUCTION NOTE:
STUCCO THICKNESS IS TYPICALLY 1 3/4". WHERE INDICATED ON EXTERIOR ELEVATION AS STUCCO 3". ADJUST DETAIL FOR EIFS THICKNESS 3 1/4". SEE ALSO STUCCO TRANSITION DETAILS FOR ADDITIONAL INFORMATION.
GUESTROOM DEMISING WALL REGIONAL PREFERENCE. IT IS ACCEPTABLE TO REPLACE THE SEPARATE WALL CONSTRUCTION FOR THE GUESTROOM DEMISING WALL WITH THE A SINGLE WALL USING COMMON 2X8 TOP AND BOTTOM PLATES AND STAGGERED STUDS.

THESE DRAWINGS ARE PRELIMINARY IN NATURE AND INTENDED FOR REVIEW AND PERMITTING. DRAWINGS ARE NOT TO BE USED FOR CONSTRUCTION WITHOUT ARCHITECT'S AND ENGINEER'S SIGNATURE AND THEIR DATE OF ISSUE FOR CONSTRUCTION.

JSA ARCHITECTS
9726 E. 42nd St. SUITE 153
TULSA, OK 74146
918.640.6800
JHNSANFORD@AOL.COM

Copyright 2019 John Sanford
JOHN SANFORD,
AIA, NCARB
TN LICENSE #106056

4/4/2019
2:05:16 PM

John Sanford
NOT VALID FOR CONSTRUCTION UNLESS SIGNED IN THIS BLOCK

PROPOSED HOLIDAY INN LI 9383
215 CRACKER BARREL DR., CLARKSVILLE
MONTGOMERY COUNTY, TENNESSEE

PERMIT NO:

4/4/2019
2:05:16 PM

No.	Description	Date

SHEET

A701
CONSTRUCTION DETAILS

Order Plans @

WWW.LI9383.COM