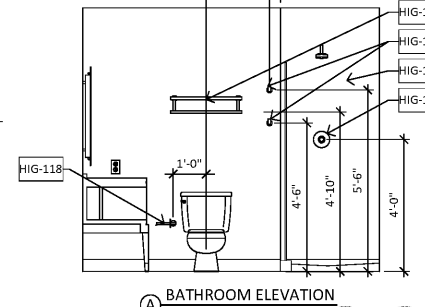
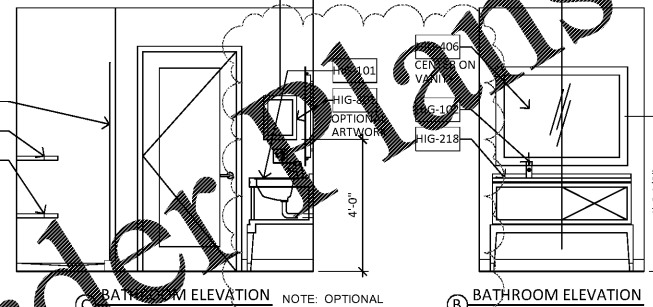
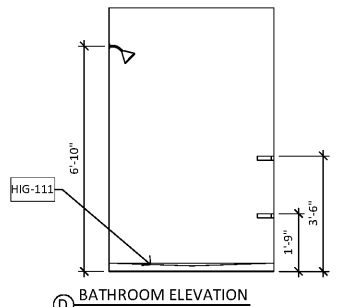


3 GR - KING EXT_powerplan
3/8" = 1'-0"

2 GR - KING EXT_FINPLAN
3/8" = 1'-0"

4 GR - KING EXT_RCP
3/8" = 1'-0"

1 GR - KING EXT
3/8" = 1'-0"



- GUESTROOM - GENERAL NOTES
- NOTE
- PATCH AND REPAIR ALL EXISTING PARTITIONS, DOORS, AND FRAMES. MATCH EXISTING CONSTRUCTION UNO
 - PROVIDE BACKING SUPPORT FOR ALL WALL-MOUNTED CABINETS AND WALL-HUNG FURNITURE UNITS. COORDINATE LOCATIONS AND BACKING SUPPORT MOUNTING HEIGHTS WITH CASEWORK SUBCONTRACTOR AND FURNITURE MANUFACTURER PRIOR TO CONSTRUCTION
 - ALL POWER AND COMMUNICATION RECEPTACLES SHOWN ON PLAN ARE EXISTING BASED ON THE CURRENT PROTOTYPE, UNO. THE ARCHITECT OF RECORD SHALL UPDATE RECEPTACLE LOCATIONS BASED ON THE SPECIFIC PROPERTY AND COORDINATE AS REQUIRED
 - REFER TO ELEVATIONS FOR SCONCE AND MIRROR MOUNTING HEIGHTS
 - ALL MOUNTING HEIGHTS ARE FROM FINISH FLOOR TO CENTER OF PLATE, UNO
 - ALL RECEPTACLES SHOWN IN ELEVATION ARE FOR CLARIFICATION AND COORDINATION WITH FF&E
 - THE FINISH PLAN SHOULD BE USED IN CONJUNCTION WITH THE SET OF CONSTRUCTION DRAWINGS AND WRITTEN SPECIFICATIONS
 - ALL FLOORING TO BE INSTALLED IN ACCORDANCE WITH MANUFACTURER'S RECOMMENDATIONS FOR INSTALLATION, UNO
 - PAINT WALLS PT01 UNO
 - PAINT DOORS AND FRAMES TO MATCH ADJACENT WALL UNO
 - PAINT GUESTROOM ENTRY DOOR FRAME PT05
 - VERIFY OUTLET ROUGH-IN LOCATION W/ OWNER & IHG

