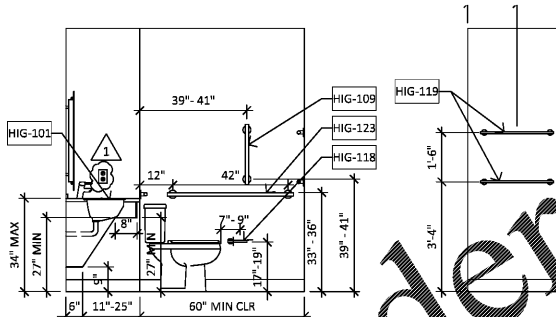


5 GR - DQ ADA\_powerplan  
3/8" = 1'-0"

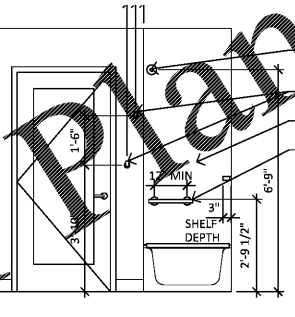
4 GR - DQ ADA FINPLAN  
3/8" = 1'-0"

3 GR - DQ HG RCP  
3/8" = 1'-0"

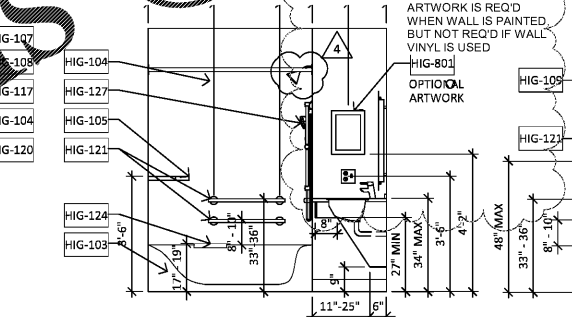
2 GR - DQ ADA  
3/8" = 1'-0"



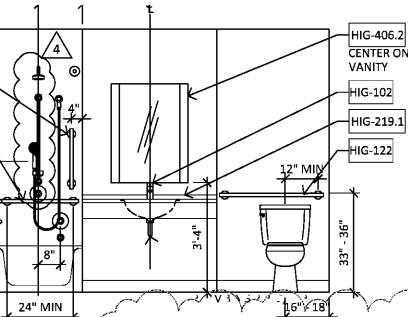
BATHROOM ELEVATION



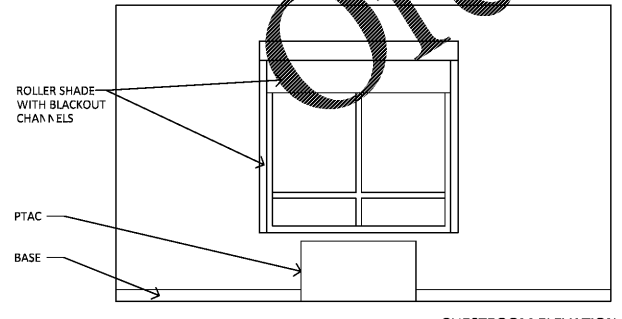
BATHROOM ELEVATION



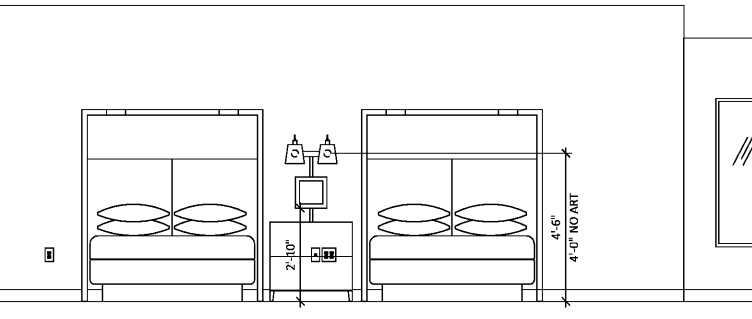
BATHROOM ELEVATION



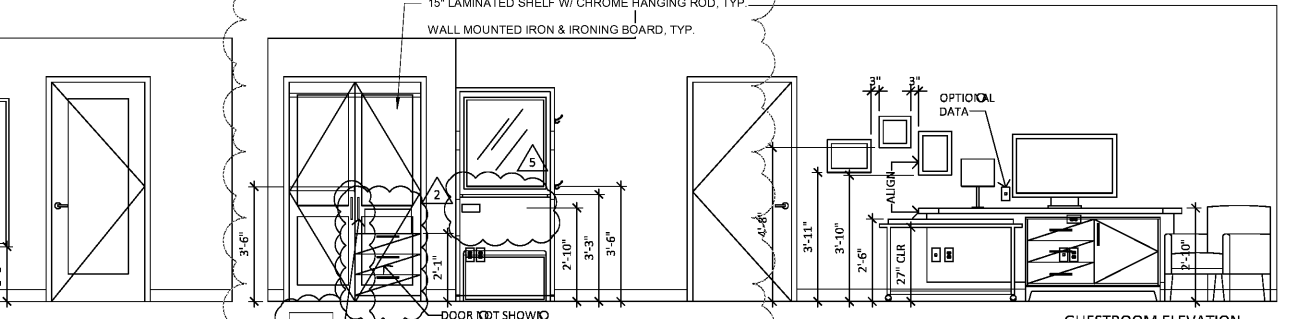
BATHROOM ELEVATION



GUESTROOM ELEVATION



GUESTROOM ELEVATION



GUESTROOM ELEVATION

ACCESSIBLE GUESTROOM - GENERAL NOTES

Notes

- MUST HAVE 18" CLEAR FROM DOOR LATCH SIDE TO WALL
- PROVIDE BACKING SUPPORT FOR ALL WALL-MOUNTED CABINETS & WALL-HUNG FURNITURE UNITS. COORDINATED LOCATIONS AND BACKING SUPPORT MOUNTING HEIGHTS WITH CASEWORK SUBCONTRACTOR AND FURNITURE MANUFACTURER PRIOR TO CONSTRUCTION
- ALL POWER AND COMMUNICATION RECEPTACLES SHOWN ON PLAN ARE EXISTING BASED ON THE CURRENT PROTOTYPE, UNO
- REFER TO ELEVATIONS FOR SCONCE AND MIRROR MOUNTING HEIGHTS
- ALL MOUNTING HEIGHTS ARE FROM FINISH FLOOR TO CENTER OF PLATE, UNO
- ALL RECEPTACLES SHOWN IN ELEVATION ARE FOR CLARIFICATION AND COORDINATION WITH FF&E
- THE FINISH PLAN SHOULD BE USED IN CONJUNCTION WITH THE SET OF CONSTRUCTION DRAWINGS AND WRITTEN SPECIFICATIONS
- ALL FLOORING TO BE INSTALLED IN ACCORDANCE WITH MANUFACTURER'S RECOMMENDATIONS FOR INSTALLATION, UNO
- PAINT WALLS PT01 UNO
- PAINT DOORS AND FRAMES TO MATCH ADJACENT WALL UNO
- PAINT GUESTROOM ENTRY DOOR FRAME PT05
- VERIFY OUTLET TROUGH LOCATION W/ OWNER & IHG

THESE DRAWINGS ARE PRELIMINARY IN NATURE AND INTENDED FOR REVIEW AND PERMITTING. DRAWINGS ARE NOT TO BE USED FOR CONSTRUCTION WITHOUT ARCHITECT'S AND ENGINEER'S SIGNATURE AND THEIR DATE OF ISSUE FOR CONSTRUCTION.

**JSA ARCHITECTS**  
 9726 E. 42nd St SUITE 153  
 TULSA, OK 74146  
 918.640.6800  
 JHNSANFORD@AOL.COM

Copyright 2019 John Sanford  
**JOHN SANFORD,**  
 AIA, NCARB  
 TN LICENSE #106056

4/4/2019  
 2:04:34 PM

NOT VALID FOR CONSTRUCTION UNLESS SIGNED IN THIS BLOCK

**PROPOSED HOLIDAY INN LI 9383**  
 215 CRACKER BARREL DR., CLARKSVILLE  
 MONTGOMERY COUNTY, TENNESSEE

PERMIT NO: .....

4/4/2019  
 2:04:34 PM

No.	Description	Date
A	IHG Review	2.20.19

SHEET

**A415**  
 DOUBLE QUEEN  
 ACCESSIBLE