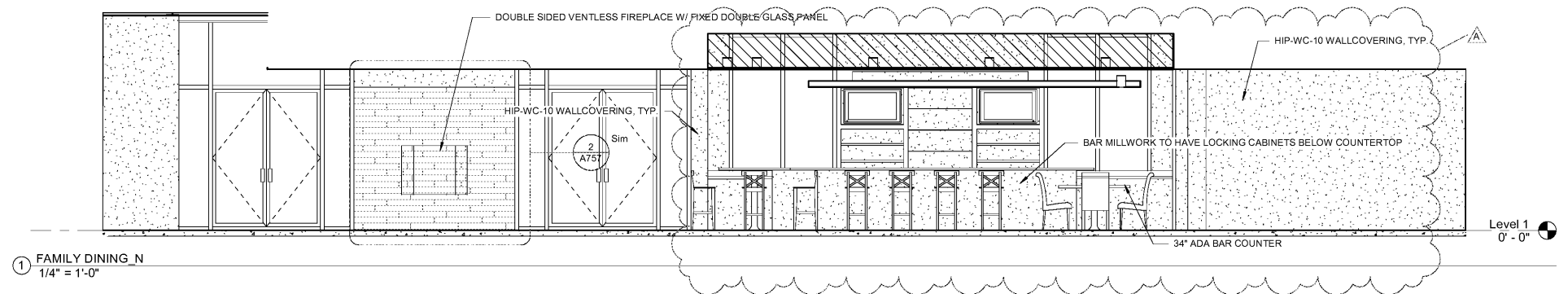
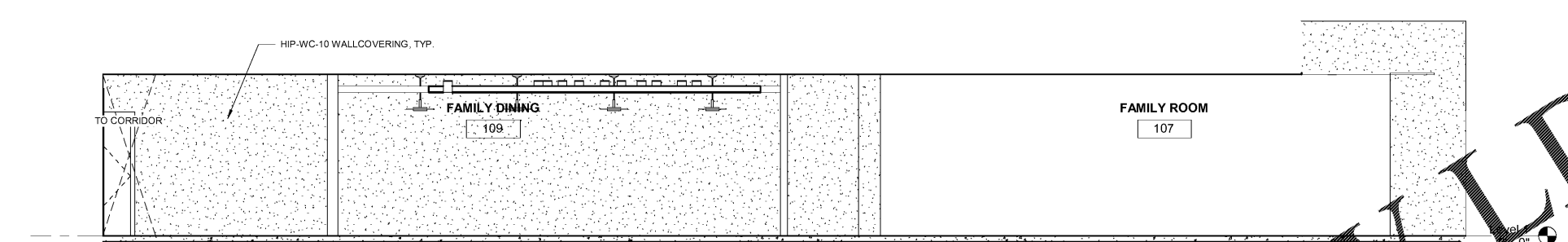


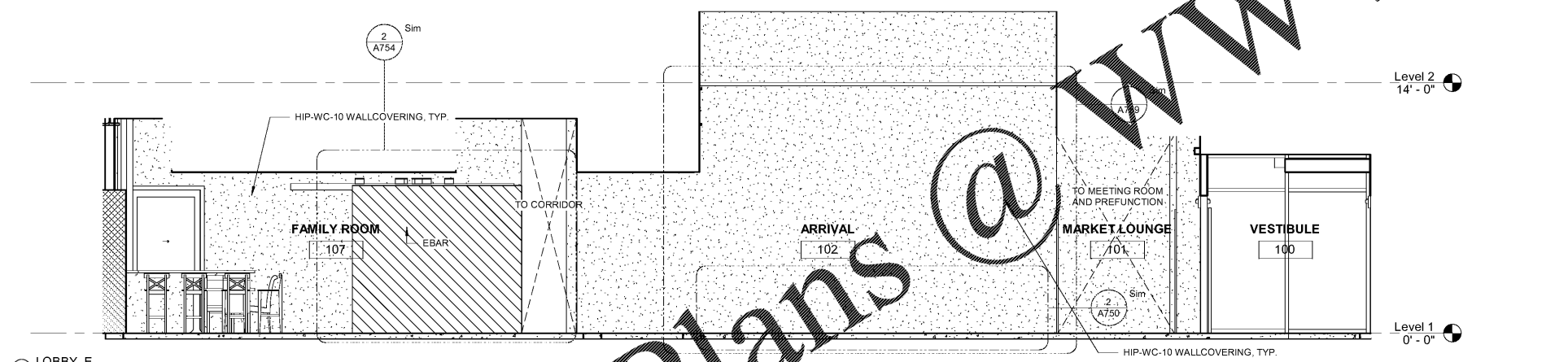
© 2019 JOHN SANFORD ARCHITECTS. ALL RIGHTS RESERVED. THIS DOCUMENT IS THE PROPERTY OF JOHN SANFORD ARCHITECTS. NO PART OF THIS DOCUMENT IS TO BE REPRODUCED, COPIED, OR TRANSMITTED IN ANY FORM OR BY ANY MEANS, ELECTRONIC OR MECHANICAL, INCLUDING PHOTOCOPYING, RECORDING, OR BY ANY INFORMATION STORAGE AND RETRIEVAL SYSTEM, WITHOUT THE WRITTEN PERMISSION OF JOHN SANFORD ARCHITECTS.



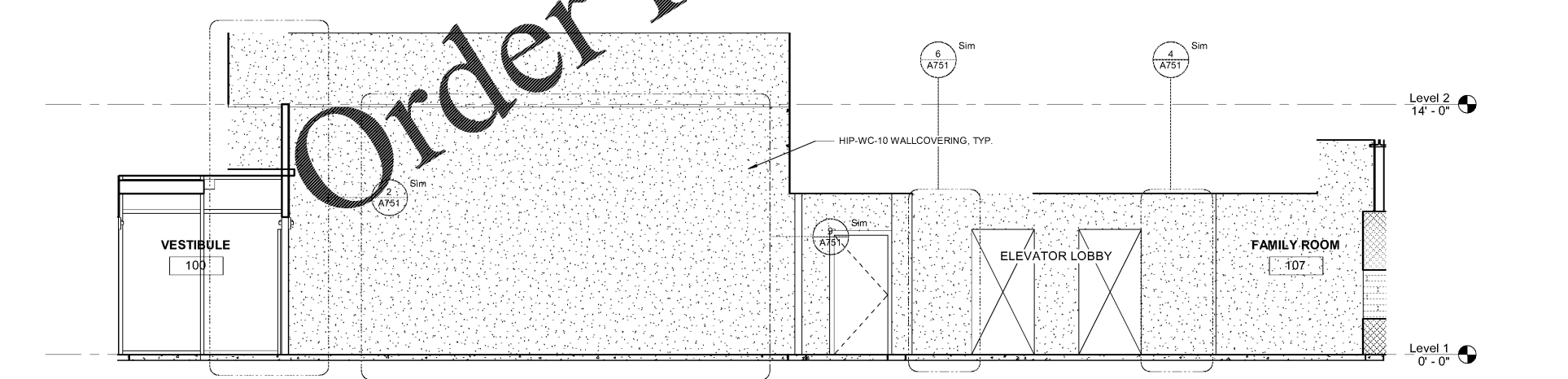
① FAMILY DINING_N
1/4" = 1'-0"



② FAMILY DINING_S
1/4" = 1'-0"



③ LOBBY_E
1/4" = 1'-0"



④ LOBBY_W
1/4" = 1'-0"

Order Plans @ www.LDILine.com

THESE DRAWINGS ARE PRELIMINARY IN NATURE AND INTENDED FOR REVIEW AND PERMITTING. DRAWINGS ARE NOT TO BE USED FOR CONSTRUCTION WITHOUT ARCHITECT'S AND ENGINEER'S SIGNATURE AND THEIR DATE OF ISSUE FOR CONSTRUCTION.
 RECORD

JSA
 ARCHITECTS
 9726 E. 42nd St. SUITE 153
 TULSA, OK 74146
 918.640.6800
 JHNSANFORD@AOL.COM
 Copyright 2019 John Sanford
 JOHN SANFORD,
 AIA, NCARB
 TN LICENSE #106056
 4/4/2019
 2:02:20 PM

 John Sanford
 NOT VALID FOR CONSTRUCTION UNLESS SIGNED IN THIS BLOCK

PROPOSED HOLIDAY INN LI 9383
 215 CRACKER BARREL DR., CLARKSVILLE
 MONTGOMERY COUNTY, TENNESSEE
 PERMIT NO:
 4/4/2019
 2:02:20 PM

No.	Description	Date
A	IHG Review	2.20.19

SHEET
A400.2
 LOBBY & DINING INT.
 ELEV.