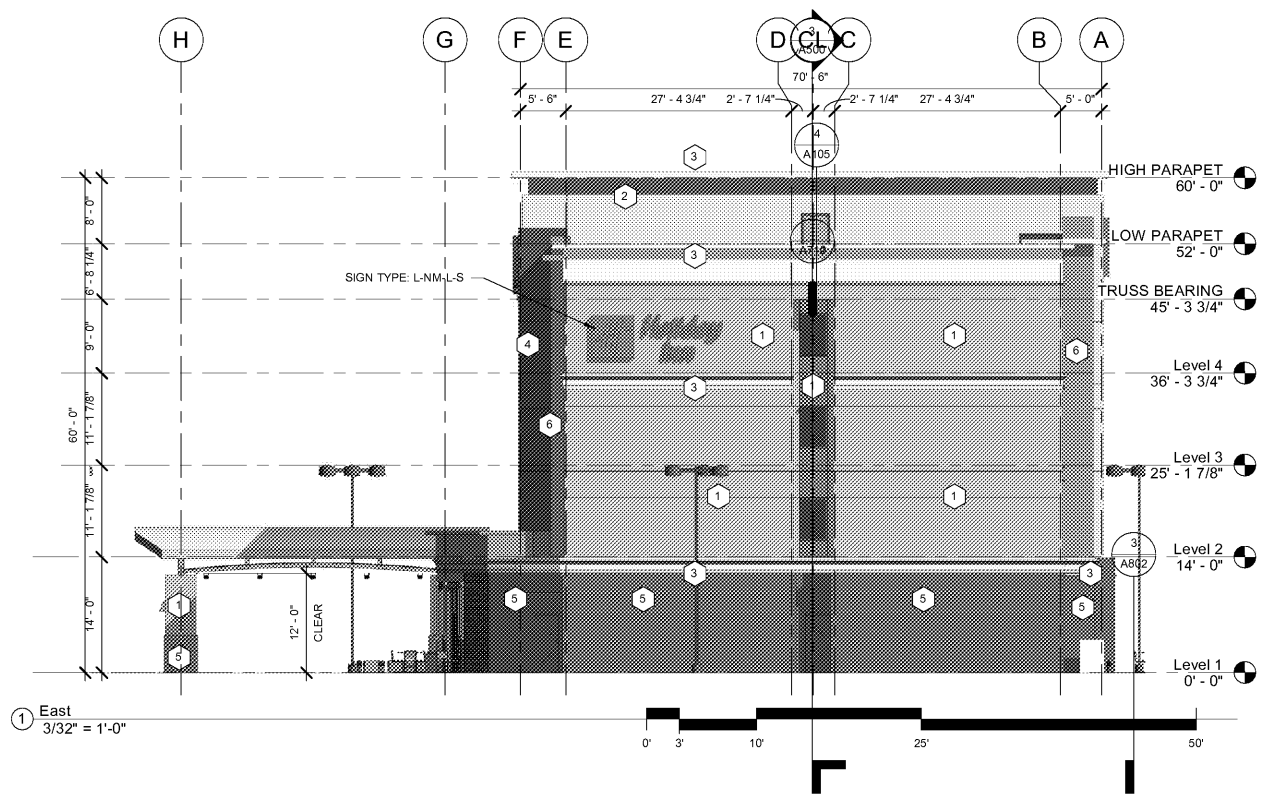


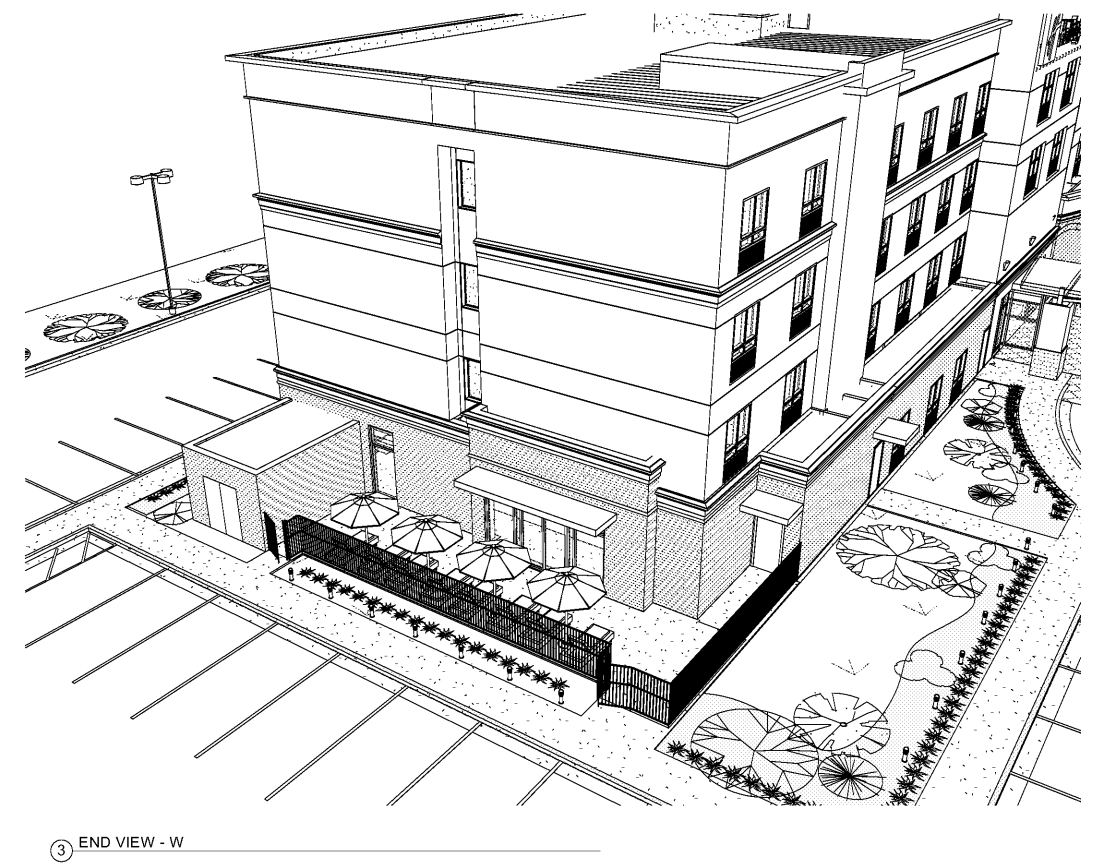
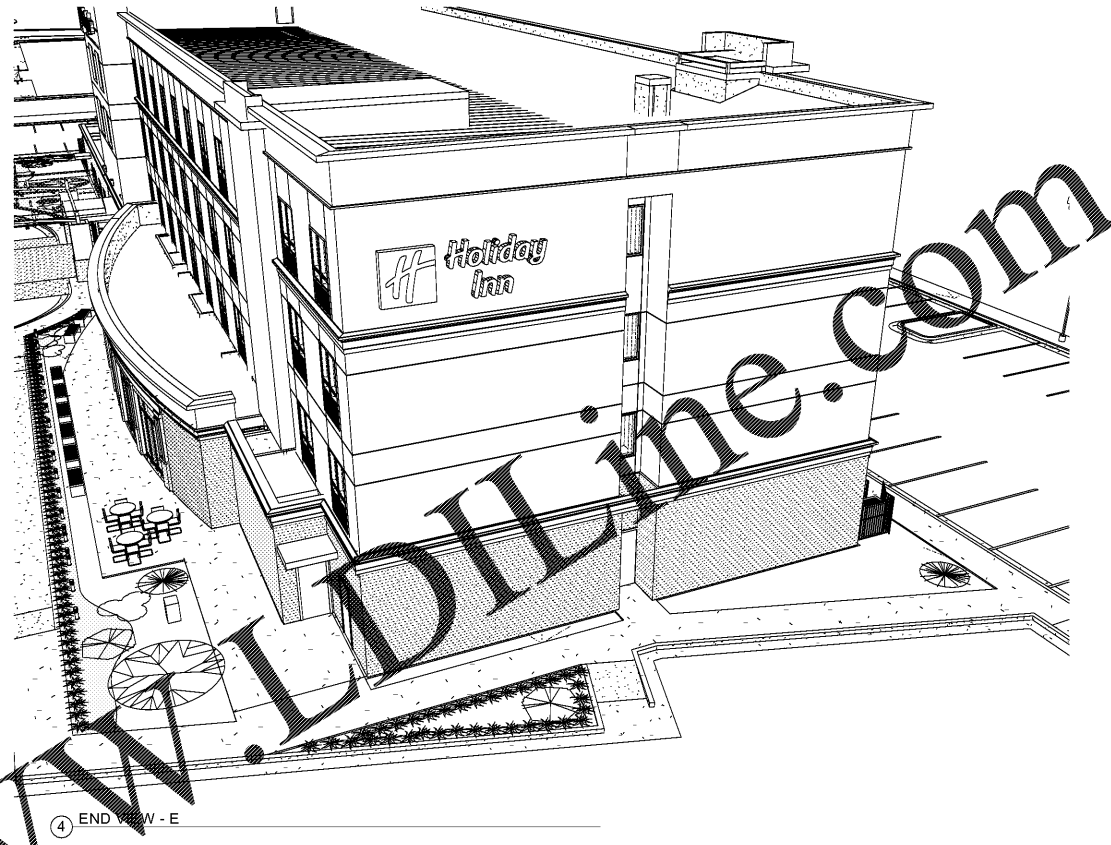
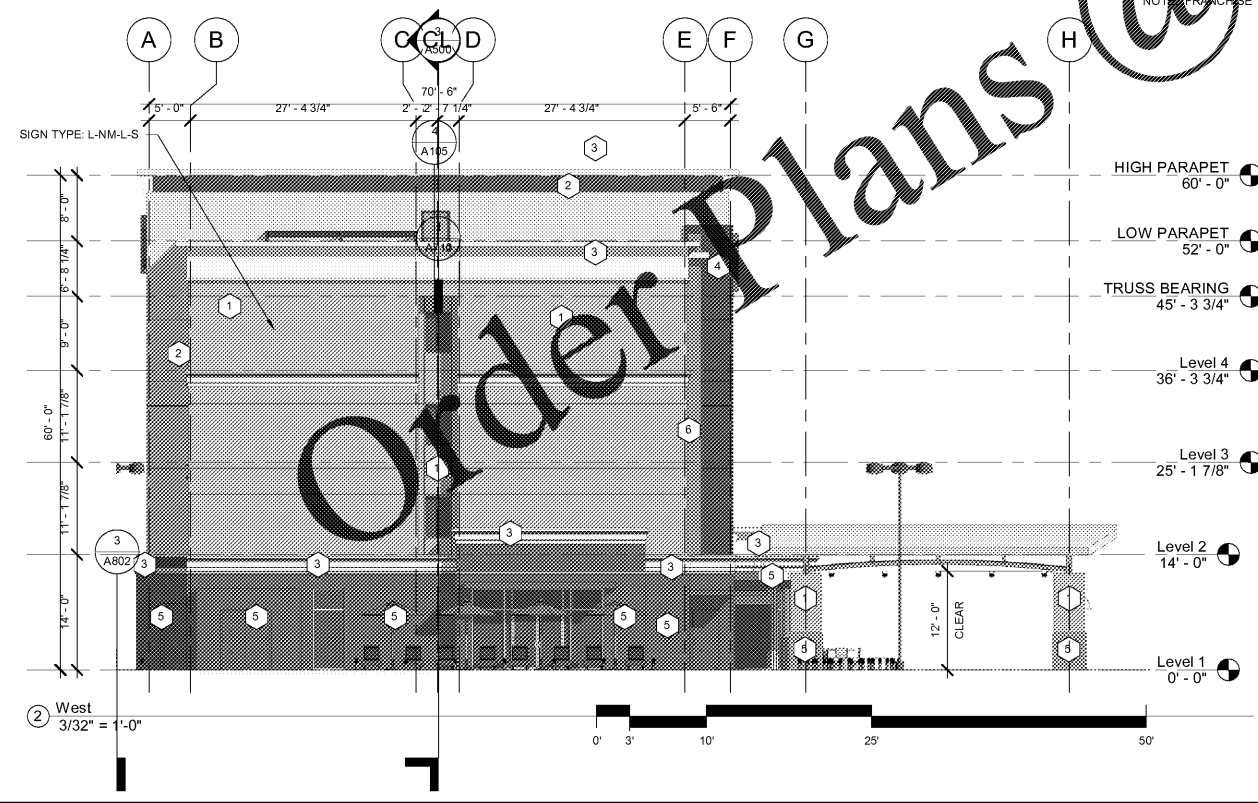
© 2019 JOHN SANFORD ARCHITECTS. ALL RIGHTS RESERVED. REPRODUCTION, REGISTRATION AND DISTRIBUTION OF THESE DRAWINGS IS PROHIBITED. ALL DIMENSIONS ARE TO UNLESS OTHERWISE NOTED. ANY PARTIAL REPRODUCTION OR ALTERATION OF THESE DRAWINGS IS PROHIBITED. ALL DIMENSIONS ARE TO UNLESS OTHERWISE NOTED. ANY PARTIAL REPRODUCTION OR ALTERATION OF THESE DRAWINGS IS PROHIBITED. ALL DIMENSIONS ARE TO UNLESS OTHERWISE NOTED. ANY PARTIAL REPRODUCTION OR ALTERATION OF THESE DRAWINGS IS PROHIBITED.



NOTE: FOLLOW ASTM STANDARDS FOR STUCCO INSTALLATION, ASTM C 1063

Note Number	Content
1	Macadamia SW 6
2	Antique White SW 61
3	Extra White SW 7006
4	Thunder Gray SW 7645
5	Site (Owner Spec.)
6	San Antonio Sage SW 7731

NOTE: FRANCHISE TO APPROVE COLORS



THESE DRAWINGS ARE PRELIMINARY IN NATURE AND INTENDED FOR REVIEW AND PERMITTING. DRAWINGS ARE NOT TO BE USED FOR CONSTRUCTION WITHOUT ARCHITECT'S AND ENGINEER'S SIGNATURE AND THEIR DATE OF ISSUE FOR CONSTRUCTION.

RECORD

JSA ARCHITECTS
 9726 E. 42nd St. SUITE 153
 TULSA, OK 74146
 918.640.6800
 JHNSANFORD@AOL.COM

Copyright 2019 John Sanford
 JOHN SANFORD,
 AIA, NCARB
 TN LICENSE #106056

4/4/2019
 2:02:03 PM

John Sanford

NOT VALID FOR CONSTRUCTION UNLESS SIGNED IN THIS BLOCK

PROPOSED HOLIDAY INN LI 9383
 215 CRACKER BARREL DR., CLARKSVILLE
 MONTGOMERY COUNTY, TENNESSEE

PERMIT NO: -----
 4/4/2019
 2:02:03 PM

No.	Description	Date

SHEET
A201
 EXTERIOR ELEVATIONS