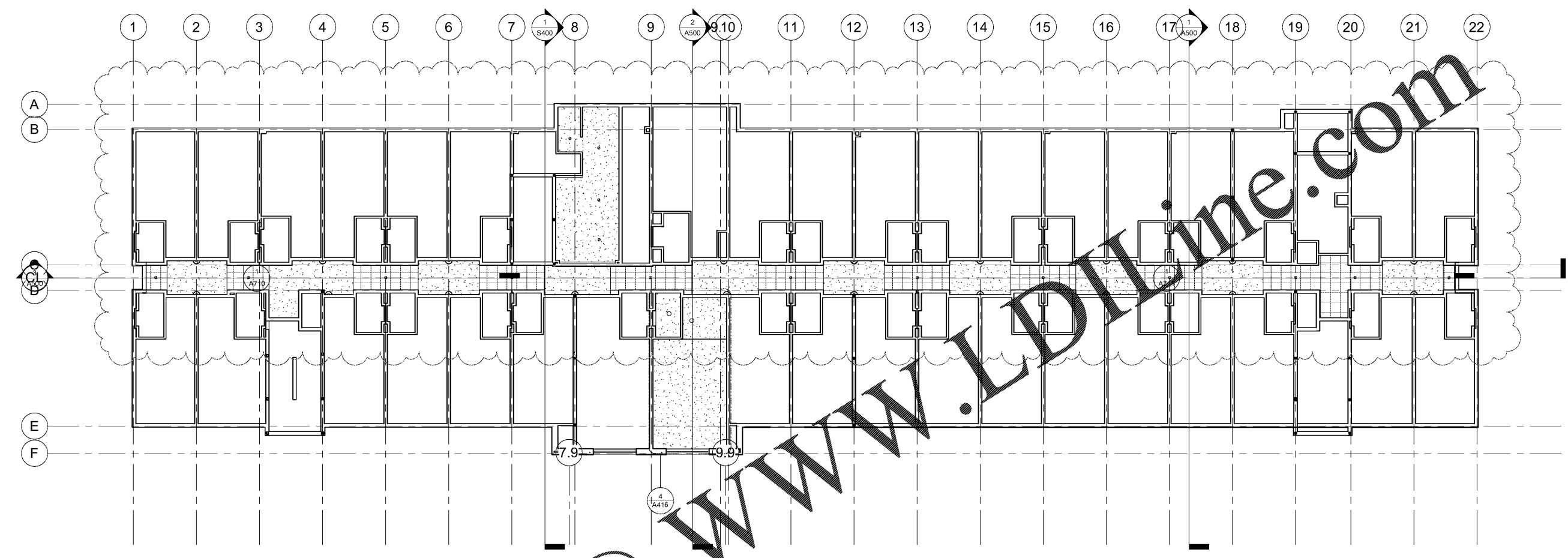


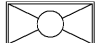








© 2019 JOHN SANFORD ARCHITECTS. ALL RIGHTS RESERVED. REPRODUCTION, DISTRIBUTION, OR ANY OTHER USE OF THIS DOCUMENTATION WITHOUT THE WRITTEN PERMISSION IS PROHIBITED. ALL INFORMATION ALTERNATIVE TO INSTRUMENT OF SERVICE BEING BY JOHN SANFORD ARCHITECTS.



① Level 4  
3/32" = 1'-0"

-  LED STRIP LIGHTING
-  2X2 FLUORESCENT
-  2X4 FLUORESCENT
-  CAN LIGHTING
-  PENDANT LIGHTING
-  SCONCE LIGHTING
-  GYP CEILING
-  2X2 CEILING
-  WOOD CEILING

RCP LEGEND  
1/4" = 1'-0"

THESE DRAWINGS ARE PRELIMINARY IN NATURE AND INTENDED FOR REVIEW AND PERMITTING. DRAWINGS ARE NOT TO BE USED FOR CONSTRUCTION WITHOUT ARCHITECT'S AND ENGINEER'S SIGNATURE AND THEIR DATE OF ISSUE FOR CONSTRUCTION.

RECORD

**JSA**  
ARCHITECTS

9726 E. 42nd St. SUITE 153  
TULSA, OK 74146  
918.640.6800  
JHNSANFORD@AOL.COM

Copyright 2019 John Sanford

JOHN SANFORD,  
AIA, NCARB  
TN LICENSE #106056

4/4/2019  
1:59:44 PM



*John Sanford*

NOT VALID FOR CONSTRUCTION UNLESS SIGNED IN THIS BLOCK

PROPOSED HOLIDAY INN LI 9383  
215 CRACKER BARREL DR., CLARKSVILLE  
MONTGOMERY COUNTY, TENNESSEE

PERMIT NO: .....  
4/4/2019  
1:59:44 PM

No.	Description	Date
A	IHG Review	2.20.19

SHEET

**A124**  
4th FLOOR RCP