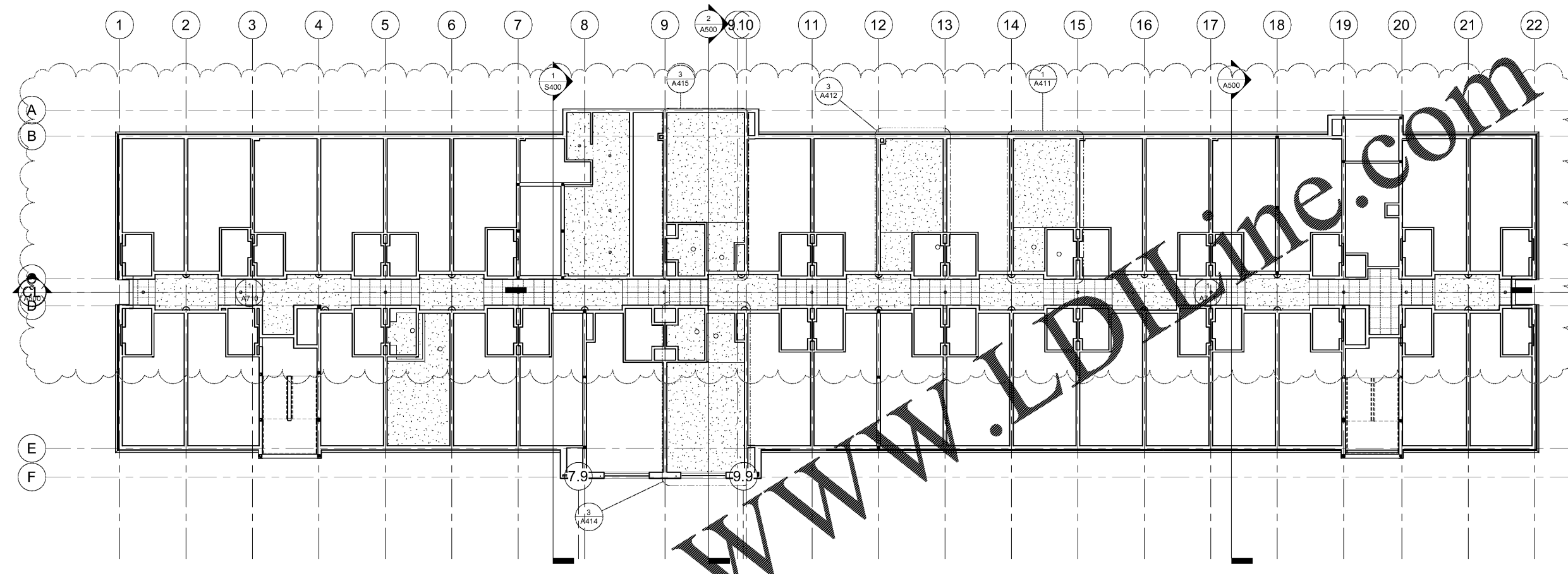

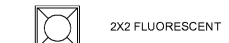
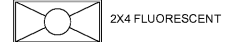
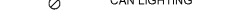
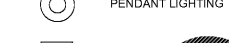

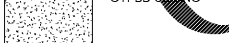
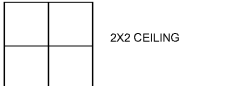
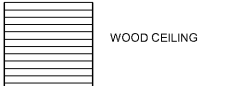


© 2019 JOHN SANFORD ARCHITECTS. ALL RIGHTS RESERVED. REPRODUCTION, DISTRIBUTION, OR ANY OTHER USE OF THIS DOCUMENTATION WITHOUT THE WRITTEN PERMISSION IS PROHIBITED. ALL DIMENSIONS ARE TO UNLESS OTHERWISE NOTED.



① Level 3
 3/32" = 1'-0"

- RCP LEGEND**
1/4" = 1'-0"
-  LED STRIP LIGHTING
 -  2X2 FLUORESCENT
 -  2X4 FLUORESCENT
 -  CAN LIGHTING
 -  PENDANT LIGHTING
 -  SCONCE LIGHTING
 -  GYPBO CEILING
 -  2X2 CEILING
 -  WOOD CEILING

THESE DRAWINGS ARE
 PRELIMINARY IN NATURE
 AND INTENDED FOR REVIEW
 AND PERMITTING.
 DRAWINGS ARE NOT TO BE
 USED FOR CONSTRUCTION
 WITHOUT ARCHITECT'S AND
 ENGINEER'S SIGNATURE
 AND THEIR DATE OF ISSUE
 FOR CONSTRUCTION.

RECORD

JSA
 ARCHITECTS

9726 E. 42nd ST. SUITE 153
 TULSA, OK 74146
 918.640.6800
 JHNSANFORD@AOL.COM

Copyright 2019 John Sanford

JOHN SANFORD,
 AIA, NCARB
 TN LICENSE #106056

4/4/2019 1:59:40 PM



John Sanford

NOT VALID FOR CONSTRUCTION UNLESS SIGNED IN THIS BLOCK

PROPOSED HOLIDAY INN LI 9383
 215 CRACKER BARREL DR., CLARKSVILLE
 MONTGOMERY COUNTY, TENNESSEE

PERMIT NO:
 4/4/2019
 1:59:40 PM

No.	Description	Date
A	IHG Review	2.20.19

SHEET

A123
 3rd FLOOR RCP