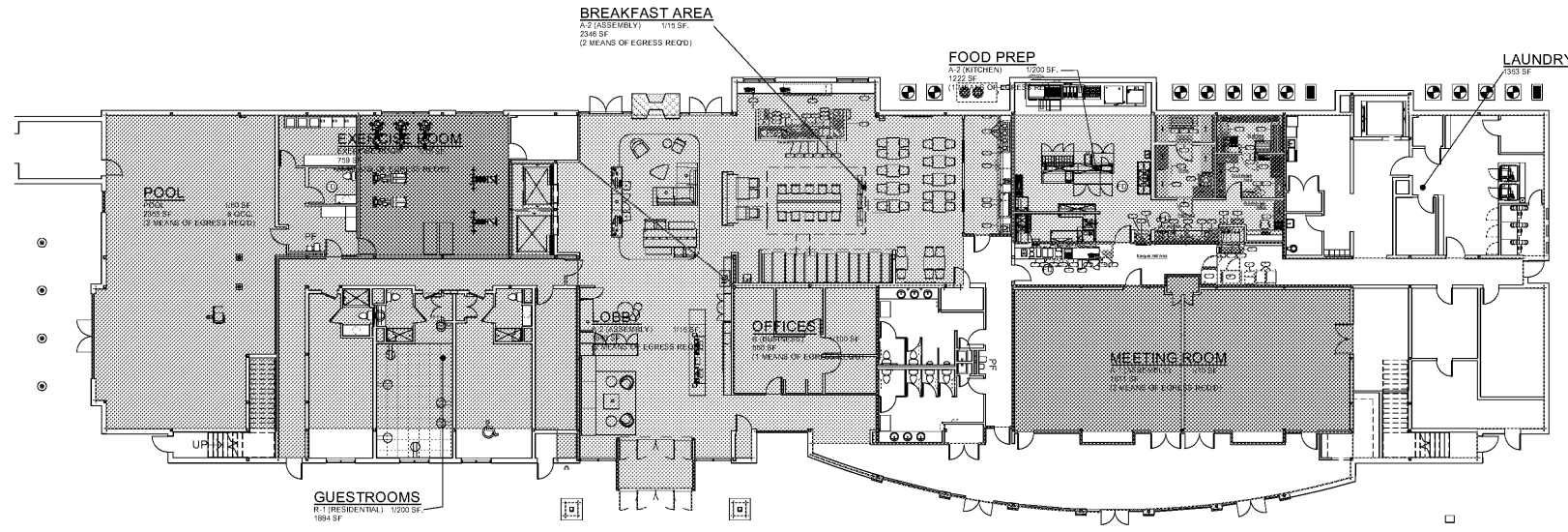


© 2019 JOHN SANFORD ARCHITECTS. ALL RIGHTS RESERVED. REPRODUCTION, REVISION, OR DISTRIBUTION OF THESE DRAWINGS WITHOUT WRITTEN PERMISSION IS PROHIBITED. ALL DIMENSIONS ARE TO CENTERLINE UNLESS OTHERWISE NOTED. ANY FUTURE REVISIONS, REVISIONS, OR DISTRIBUTION OF THESE DRAWINGS WITHOUT WRITTEN PERMISSION IS PROHIBITED. ALL DIMENSIONS ARE TO CENTERLINE UNLESS OTHERWISE NOTED. ANY FUTURE REVISIONS, REVISIONS, OR DISTRIBUTION OF THESE DRAWINGS WITHOUT WRITTEN PERMISSION IS PROHIBITED.

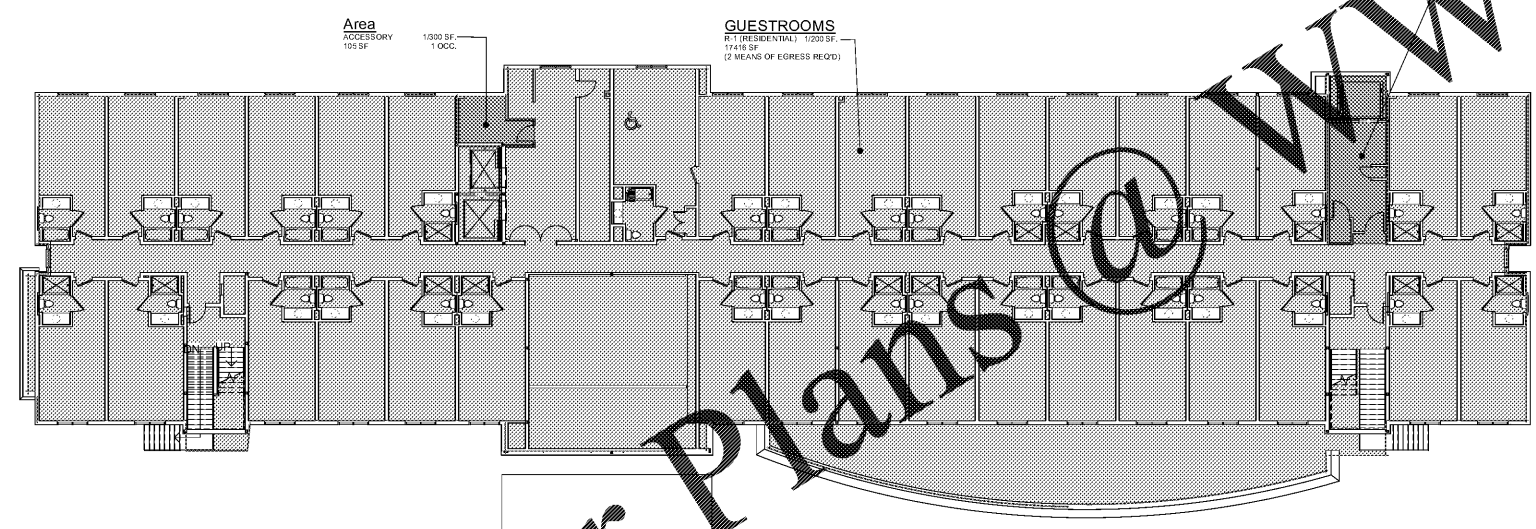


① Level 1  
1/16" = 1'-0"

- Occupant Load**
- A-1 (ASSEMBLY)
  - A-2 (ASSEMBLY)
  - A-2 (KITCHEN)
  - B (BUSINESS)
  - EXERCISE ROOM
  - POOL
  - R-1 (RESIDENTIAL)
  - ▨ Calculating

020 GROUND FLOOR OCCUPANT LOAD

Occupant Type (From IBC Table 1004.1)	Area	Factor	OCC. LOAD
A-1 (ASSEMBLY)	1353 SF	10	0
A-2 (ASSEMBLY)	4188 SF	15	0
A-2 (KITCHEN)	1222 SF	200	0
ACCESSORY	438 SF	300	2
B (BUSINESS)	550 SF	100	0
EXERCISE ROOM	759 SF	15	0
POOL	2353 SF	50	12
R-1 (RESIDENTIAL)	19300 SF	200	0
	31973 SF		14



② Typical Floor  
1/16" = 1'-0"

- Occupant Load**
- ACCESSORY
  - R-1 (RESIDENTIAL)
  - ▨ Calculating...

020 TYPICAL FLOOR OCCUPANT LOAD

Occupant Type (From IBC Table 1004.1)	Area	Factor	OCC. LOAD
ACCESSORY	438 SF	300	2
R-1 (RESIDENTIAL)	17416 SF	200	0
	17855 SF		2

Order Plans @

WWW.LDILLINE.COM

THESE DRAWINGS ARE PRELIMINARY IN NATURE AND INTENDED FOR REVIEW AND PERMITTING. DRAWINGS ARE NOT TO BE USED FOR CONSTRUCTION WITHOUT ARCHITECT'S AND ENGINEER'S SIGNATURE AND THEIR DATE OF ISSUE FOR CONSTRUCTION.

RECORD

**JSA ARCHITECTS**  
 9726 E. 42nd St. SUITE 153  
 TULSA, OK 74146  
 918.640.6800  
 JHNSANFORD@AOL.COM

Copyright 2019 John Sanford  
 JOHN SANFORD,  
 AIA, NCARB  
 TN LICENSE #106056

4/4/2019  
 1:55:15 PM

NOT VALID FOR CONSTRUCTION UNLESS SIGNED IN THIS BLOCK

**PROPOSED HOLIDAY INN LI 9383**  
 215 CRACKER BARREL DR., CLARKSVILLE  
 MONTGOMERY COUNTY, TENNESSEE

PERMIT NO: -----  
 4/4/2019  
 1:55:15 PM

No.	Description	Date

SHEET

**A002.1**  
 CODE & LIFE SAFETY  
 PLAN