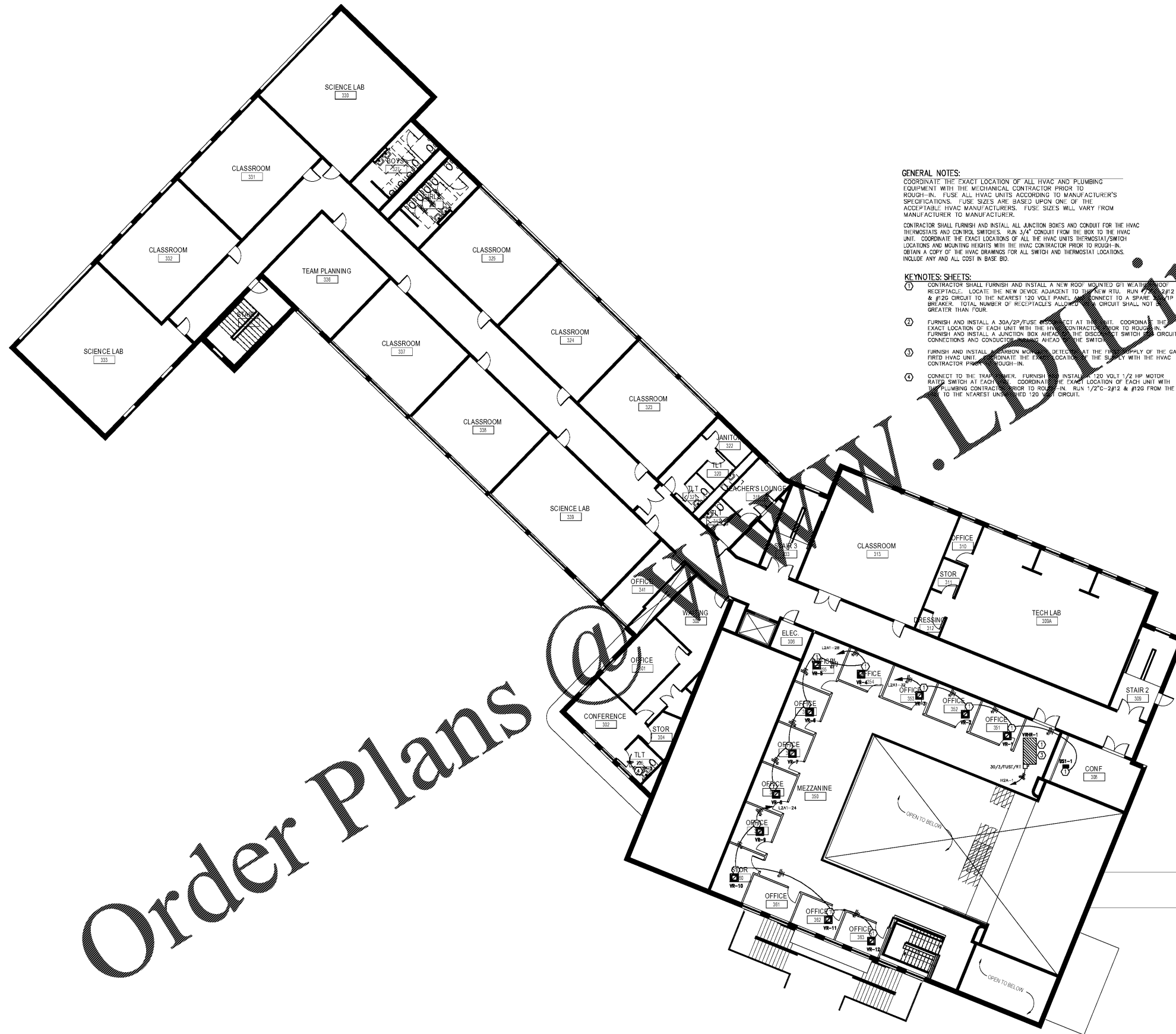


Order Plans @ www.LDW.com



GENERAL NOTES:
 COORDINATE THE EXACT LOCATION OF ALL HVAC AND PLUMBING EQUIPMENT WITH THE MECHANICAL CONTRACTOR PRIOR TO ROUGH-IN. FUSE ALL HVAC UNITS ACCORDING TO MANUFACTURER'S SPECIFICATIONS. FUSE SIZES ARE BASED UPON ONE OF THE ACCEPTABLE HVAC MANUFACTURERS. FUSE SIZES WILL VARY FROM MANUFACTURER TO MANUFACTURER.
 CONTRACTOR SHALL FURNISH AND INSTALL ALL JUNCTION BOXES AND CONDUIT FOR THE HVAC THERMOSTATS AND CONTROL SWITCHES. RUN 3/4" CONDUIT FROM THE BOX TO THE HVAC UNIT. COORDINATE THE EXACT LOCATIONS OF ALL THE HVAC UNITS THERMOSTAT/SWITCH LOCATIONS AND MOUNTING HEIGHTS WITH THE HVAC CONTRACTOR PRIOR TO ROUGH-IN. OBTAIN A COPY OF THE HVAC DRAWINGS FOR ALL SWITCH AND THERMOSTAT LOCATIONS. INCLUDE ANY AND ALL COST IN BASE BID.

KEYNOTES: SHEETS:

- CONTRACTOR SHALL FURNISH AND INSTALL A NEW ROOF MOUNTED 6" WEATHER-RESISTANT RECEPTACLE. LOCATE THE NEW DEVICE ADJACENT TO THE NEW RTU. RUN #12 2P/2P/2 & #120 CIRCUIT TO THE NEAREST 120 VOLT PANEL AND CONNECT TO A SPARE CIRCUIT BREAKER. TOTAL NUMBER OF RECEPTACLES ALLOWED ON CIRCUIT SHALL NOT BE GREATER THAN FOUR.
- FURNISH AND INSTALL A 30A/2P FUSE DISCONNECT AT EACH UNIT. COORDINATE THE EXACT LOCATION OF EACH UNIT WITH THE HVAC CONTRACTOR PRIOR TO ROUGH-IN. FURNISH AND INSTALL A JUNCTION BOX AHEAD OF THE DISCONNECT SWITCH FOR CIRCUIT CONNECTIONS AND CONDUIT. LOCATE THE SWITCH AND DISCONNECT SWITCH TO THE CONTRACTOR PRIOR TO ROUGH-IN.
- FURNISH AND INSTALL CARBON MONOXIDE DETECTOR AT THE FIRST SUPPLY OF THE GAS FRIED HVAC UNIT. COORDINATE THE EXACT LOCATION OF THE SWITCH WITH THE HVAC CONTRACTOR PRIOR TO ROUGH-IN.
- CONNECT TO THE TRANSFORMER. FURNISH AND INSTALL 120 VOLT 1/2 HP MOTOR RATED SWITCH AT EACH UNIT. COORDINATE THE EXACT LOCATION OF EACH UNIT WITH THE PLUMBING CONTRACTOR PRIOR TO ROUGH-IN. RUN 1/2" C-2P/2 & #120 FROM THE TO THE NEAREST UNBUNDLED 120 VOLT CIRCUIT.

PERKINS + WILL

1315 Peachtree St. NE
 Atlanta, GA 30309
 404.873.2300
 404.872.5823
 www.perkinswill.com

CONSULTANTS

CIVIL
 Braedlove Land Planning
 15 Simpson St. NW, Atlanta, GA 30308

STRUCTURAL
 Uzun+Case
 1230 Peachtree St. NE, Suite 2500, Atlanta, GA 30309

MEP
 Matheson Ball & Associates
 11285 Elkins Rd., Suite F3, Roswell, GA 30078

LANDSCAPING
 Perkins+Will
 1315 Peachtree St. NE, Atlanta, GA 30309

Camacho
 3103 Medlock Bridge Road, Norcross, GA 30071

OWNER
 KIPP Metro Atlanta Schools
 504 Fair St. SW Suite 300

FACILITY

CONTRACTOR

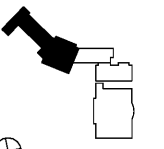
PROJECT

KIPP ATLANTA COLLEGIATE - Addition and Renovations
 98 Anderson Ave NW
 Atlanta GA 30314

RELEASED FOR CONSTRUCTION 06/07/2019



KEYPLAN



ISSUE CHART

DATE	ISSUE	DATE

Job Number _____
 Drawn _____ PAT
 Checked _____ PAT
 Approved _____ PAT

FLOOR PLAN - THIRD FLOOR - PART A - HVAC POWER

SHEET NUMBER

EM2.3A

Copyright © 2018 Perkins+Will