

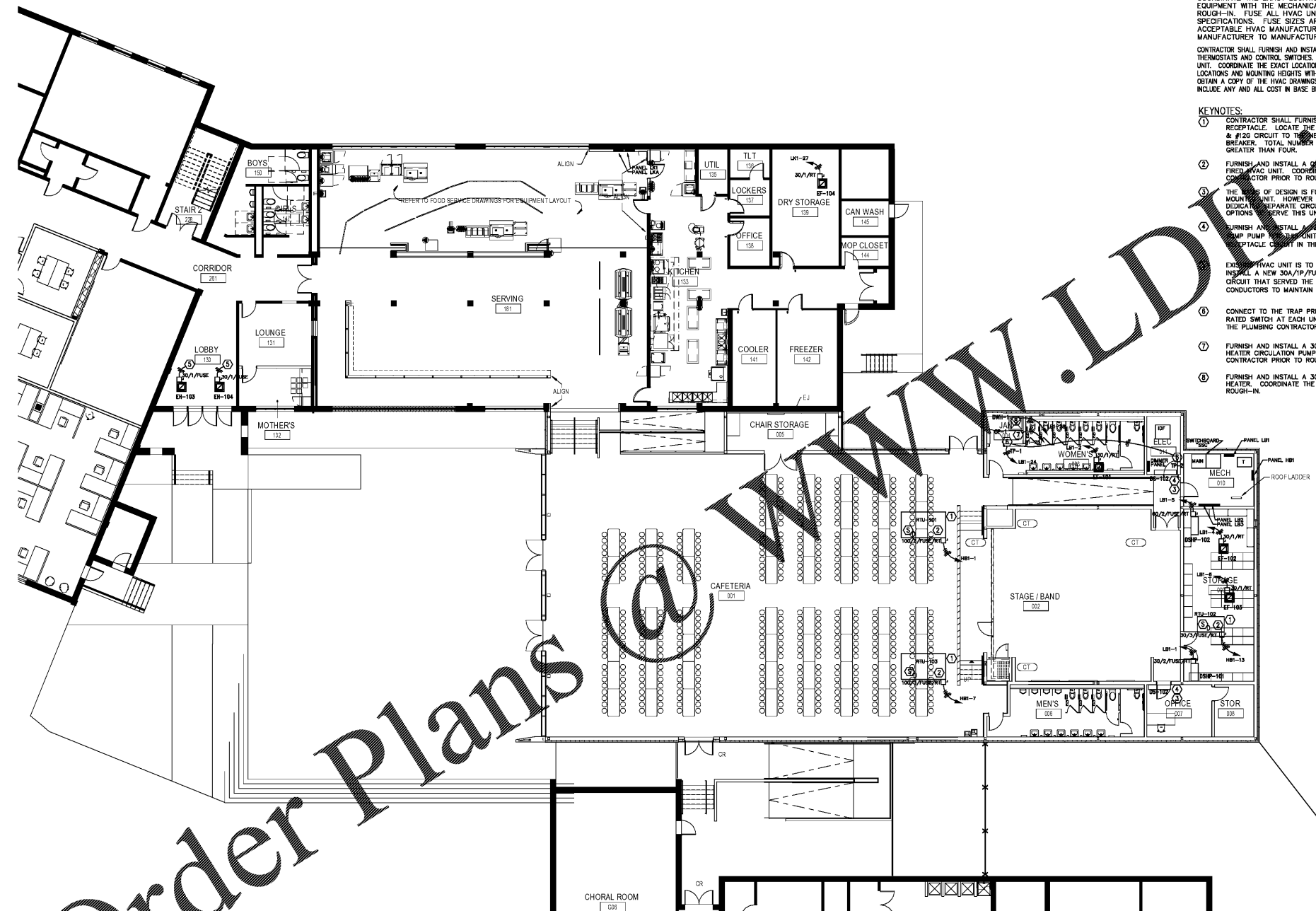
GENERAL NOTES:

COORDINATE THE EXACT LOCATION OF ALL HVAC AND PLUMBING EQUIPMENT WITH THE MECHANICAL CONTRACTOR PRIOR TO ROUGH-IN. FUSE ALL HVAC UNITS ACCORDING TO MANUFACTURER'S SPECIFICATIONS. FUSE SIZES ARE BASED UPON ONE OF THE ACCEPTABLE HVAC MANUFACTURERS. FUSE SIZES WILL VARY FROM MANUFACTURER TO MANUFACTURER.

CONTRACTOR SHALL FURNISH AND INSTALL ALL JUNCTION BOXES AND CONDUIT FOR THE HVAC THERMOSTATS AND CONTROL SWITCHES. RUN 3/4" CONDUIT FROM THE BOX TO THE HVAC UNIT. COORDINATE THE EXACT LOCATIONS OF ALL THE HVAC UNITS THERMOSTAT/SWITCH LOCATIONS AND MOUNTING HEIGHTS WITH THE HVAC CONTRACTOR PRIOR TO ROUGH-IN. OBTAIN A COPY OF THE HVAC DRAWINGS FOR ALL SWITCH AND THERMOSTAT LOCATIONS. INCLUDE ANY AND ALL COST IN BASE BID.

KEYNOTES:

- 1 CONTRACTOR SHALL FURNISH AND INSTALL A NEW RATED 120 VOLT 1/2HP MOTOR RATED DISCONNECT SWITCH AT THE FIRST SUPPLY OF THE GAS FRIED HVAC UNIT. COORDINATE THE EXACT LOCATION OF THE SUPPLY WITH THE HVAC CONTRACTOR PRIOR TO ROUGH-IN.
- 2 FURNISH AND INSTALL A 30A/1P/FUSE DISCONNECT SWITCH FOR THE NEW WATER HEATER CIRCULATION PUMP. COORDINATE THE EXACT LOCATION WITH THE PLUMBING CONTRACTOR PRIOR TO ROUGH-IN.
- 3 FURNISH AND INSTALL A 30A/2P/FUSE/RT DISCONNECT SWITCH FOR THE NEW 4KW WATER HEATER. COORDINATE THE EXACT LOCATION WITH THE PLUMBING CONTRACTOR PRIOR TO ROUGH-IN.
- 4 FURNISH AND INSTALL A 30A/1P/FUSE/RT DISCONNECT SWITCH FOR THE NEW WATER HEATER CIRCULATION PUMP. COORDINATE THE EXACT LOCATION WITH THE PLUMBING CONTRACTOR PRIOR TO ROUGH-IN.
- 5 FURNISH AND INSTALL A 30A/2P/FUSE/RT DISCONNECT SWITCH FOR THE NEW 4KW WATER HEATER. COORDINATE THE EXACT LOCATION WITH THE PLUMBING CONTRACTOR PRIOR TO ROUGH-IN.



1 01 - FIRST FLOOR - PART - B - HVAC POWER
3/32" = 1'-0"