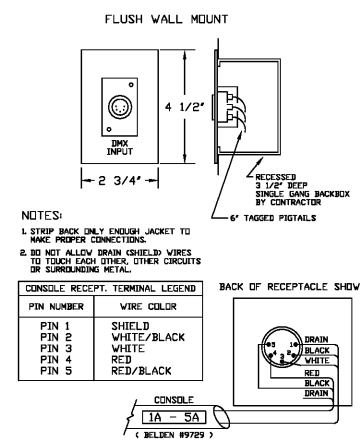


1 DMX SPLITTER / MERGER ENCLOSURE
ES.01 / NO SCALE



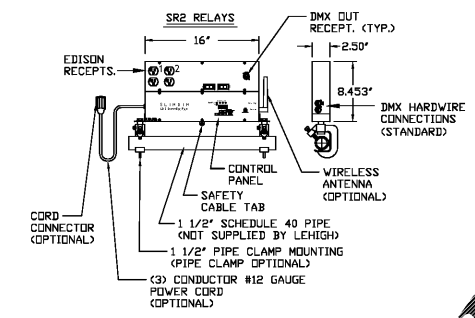
2 DMX CONSOLE RECEPTACLE
ES.01 / NO SCALE

WIRE LEGEND

CONSOLE	
IA - 5A	

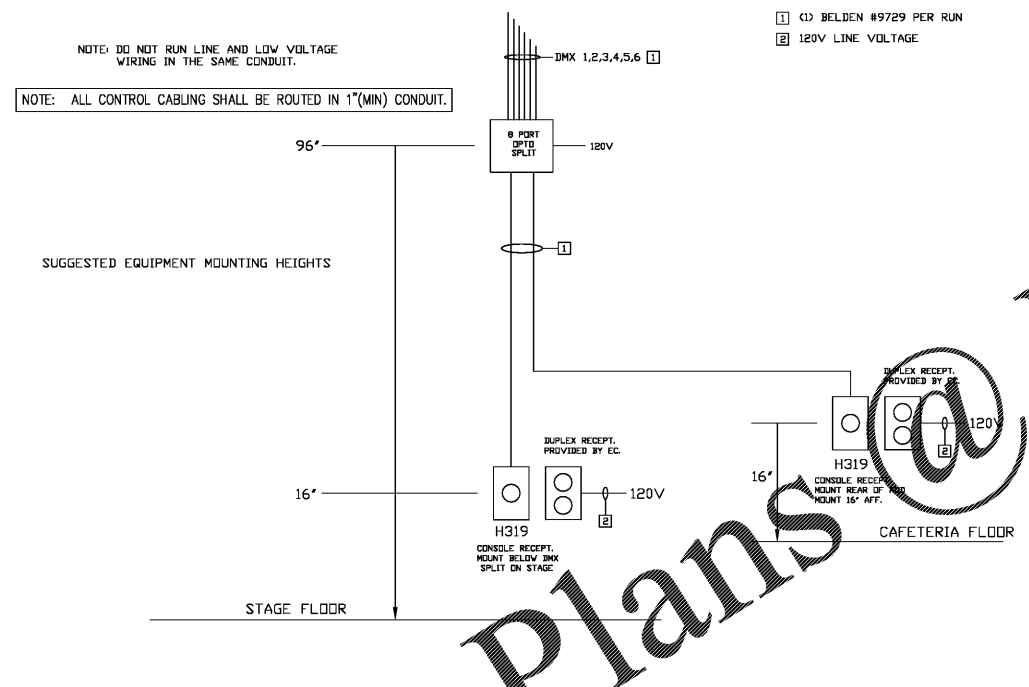
CONSOLE RECEPT. TERMINAL LEGEND

PIN NUMBER	WIRE COLOR
PIN 1	SHIELD
PIN 2	WHITE/BLACK
PIN 3	WHITE
PIN 4	RED
PIN 5	RED/BLACK

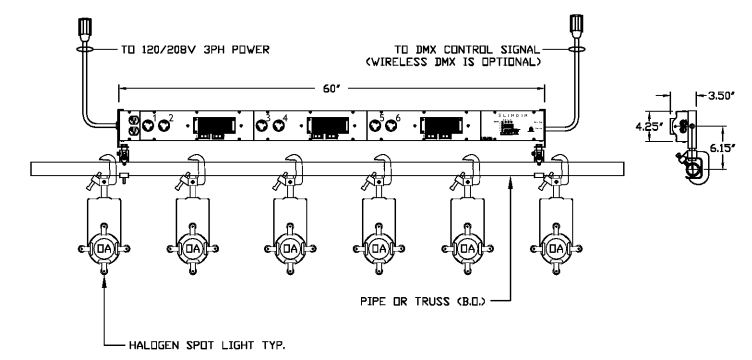


3 SLIMDIM SR2 DETAIL
ES.01 / NO SCALE

- NOTES:
1. UL LISTED UNDER INDUSTRIAL CONTROLS FOR 40 DEG. C. AMBIENT.
 2. MAXIMUM INPUT POWER 180 VOLTS, 8 WIRE 80 AMP.
 3. MAXIMUM LOAD PER CIRCUIT AT 120 VOLTS IS 18 AMPS.
 4. EACH LOAD CIRCUIT IS PROTECTED BY A 15 AMP CIRCUIT BREAKER.
 5. INPUT BRANCH CIRCUIT PROTECTION TO BE PROVIDED BY OTHERS.
 6. SLIMDIM POWER CORD LENGTH IS AS REQUIRED. CORD CONNECTOR TYPE IS AS REQUIRED.
 7. THE LAST SLIMDIM ON EACH DMX DIMM MUST HAVE THE DIP SWITCH SET TO NONABLE TERMINATION.
 8. THE SLIMDIM DIMMER IS SUITABLE FOR HALOGEN STAGE LOADS. THE SLIMDIM SR2 RELAYS IS SUITABLE FOR LED TYPE STAGE LOADS.



4 DIMMING AND CONTROL SYSTEM
ES.01 / NO SCALE



5 SLIMDIM SD6 DIMMER STICK
ES.01 / NO SCALE

Order Plans @ www.LDILine.com

PERKINS + WILL

1315 Peachtree St. NE
Atlanta, GA 30309
404.873.2300
404.872.5823
www.perkinswill.com

CONSULTANTS

OWNER
Breedlove Land Planning
15 Simpson St. NW, Atlanta, GA 30308

STRUCTURAL
Urban+Case
1230 Peachtree St. NE, Suite 2500, Atlanta, GA 30309

MEP
Matheson Bell & Associates
11295 Elkins Rd., Suite F3, Roswell, GA 30078

LANDSCAPING
Perkins+Will
1315 Peachtree St. NE, Atlanta, GA 30309

ARCHITECT
Camacho
3103 Medlock Bridge Road, Norcross, GA 30071

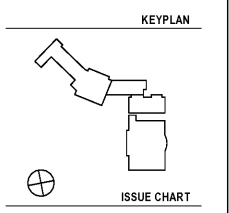
OWNER
KIPP Metro Atlanta Schools
504 Fair St. SW Suite 300

FACILITY

CONTRACTOR

RELEASED FOR CONSTRUCTION 06/07/2019

KIPP ATLANTA COLLEGIATE - Addition and Renovations
98 Anderson Ave NW
Atlanta GA 30314



DATE	ISSUE	DATE

Job Number _____
 Drawn _____ PAT
 Checked _____ PAT
 Approved _____ PAT
 TITLE _____

STAGE LIGHTING DETAILS

SHEET NUMBER

E5.01